

SINGLE USE TECHNOLOGY BROCHURE

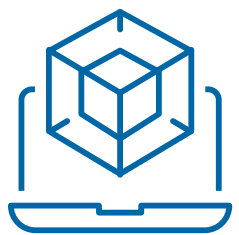
Liquidyne specializes in designing and implementing cGMP single use solutions to the Biotech and Pharmaceutical Industries with an emphasis on "Performance with Value"



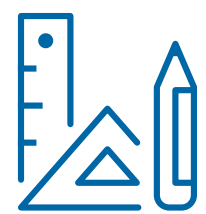
PROCESS PERFECTED



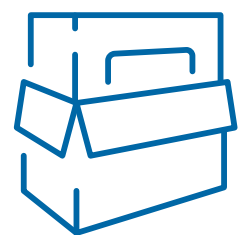
DISCOVER



DESIGN



DEVELOP



DELIVER

A clear understanding of your process and project are paramount to a successful assembly. Our team of process experts will work to decipher and optimize all your requirements including timeline and budget.

The design team will utilize the discovery requirements to produce 2D & 3D CAD drawings for review and sign-off.

SUT parts are then acquired for assembly and development of prototype, small batch or production. Our quality management ensures quality and consistency.

We pride ourselves on meeting your delivery requirements and are proud to report a 99.8% success rate. Our consistency contributes to your bottom line and is just another reason Liquidyne is best-in-class for your single-use assembly needs.

SINGLE-USE SIMPLIFIED

The promise of single use is mitigation of risk, greater efficiency, and customizable solutions but finding the right partner to navigate the path guarantees the promise. Therefore, Liquidyne leverages its expertise in unit operations and quality management to ensure your single-use is simplified.

BOOST YOUR PROCESS

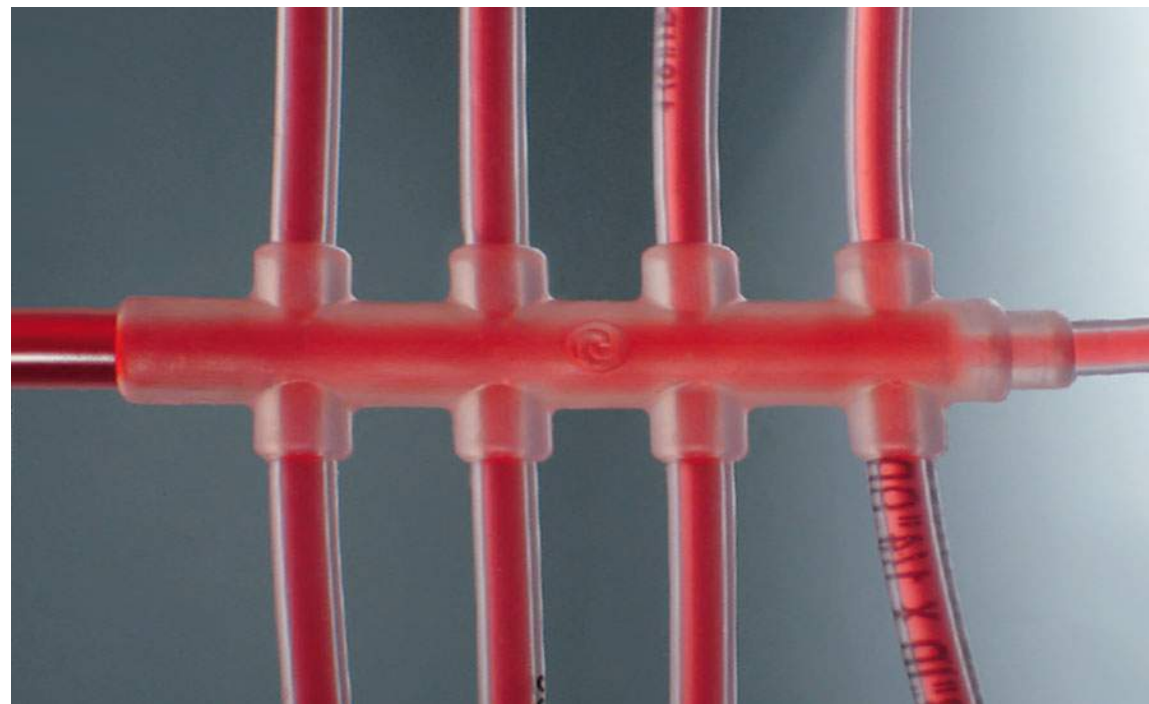
- Best-in-class Service & Support
- World class Partners
- Solution Optimization
- On-time Delivery
- Full Traceability
- SPC & Six Sigma Methodology
- cGMP Compliant Products

HAVE A QUESTION? LIQUIDYNE HAS ANSWERS.

303-205-9050

sales@liquidyneusa.com

liquidyneusa.com



BIO-SIMPLEX® SINGLE-USE MOLDED ASSEMBLIES



Custom molded C-Flex® manifolds for closed system fluid transfer, C-Flex® tubing is sealable / weldable.



BIO-SIMPLEX® SAMPLING MANIFOLD SYSTEMS



Sterile PETG Square Bottles with EZ-Top® for cell culture sampling, C-Flex® tubing is sealable / weldable, 60 ml / 500 ml.



BIO-SIMPLEX® TUBING END ASSEMBLIES



C-Flex® sanitary molded assemblies for tri-clamp connectivity, sealable / weldable.



BIO-SIMPLEX® SPINNER FLASK ACCESSORIES



C-Flex® molded assemblies for closed system spinner flasks, sealable / weldable (flasks not included).



BIO-SIMPLEX® ERLENMEYER FLASK SYSTEMS



Gamma irradiated PC flasks with molded EZ-Top® for cell culture, C-Flex® tubing is sealable / weldable, 1 - 3 L.



BIO-SIMPLEX® MEDIA BOTTLE ASSEMBLY SYSTEMS



Sterile PETG bottles with molded EZ-Top® for media containment, C-Flex® tubing is sealable / weldable, 60 ml - 2 L.



**BIO-SIMPLEX®
CARBOY**



Saint-Gobain Performance Plastics introduces Bio-Simplex™ Polypropylene Carboys with EZ Top® Caps and single-use EZ Top® Assemblies for advanced liquid handling and solution storage for many pharma applications.



**SANI-TECH® SANI-LINK®
MANIFOLDS**



Custom molded Sani-Tech® SHT-C tubing manifolds for closed system fluid transfer, high purity, autoclavable and gamma stable



**SANI-TECH® TA TUBING
ASSEMBLIES**



Sani-Tech® TA Tubing Assemblies offer a comprehensive array of sizes and lengths to suit a variety of connectivity needs.



**BARBLOCK® ULTRA-SECURE
RETAINERS**



BarbLock® Ultra-Secure Retainers are the most advanced design available in today's demanding connective applications.



**PURE-FIT® SIB® SMOOTH
INNER BORE SYSTEMS**



Pure-Fit® SIB® is a smooth inner bore (SIB) hose-barb connector that provides a seamless transition between tubing and fittings throughout the...



AseptiQuik G



Genderless connectors enable quick and easy sterile connections, even in non-sterile environments.



AseptiQuik STC



Integration of AseptiQuik® sterile connector and the Steam-Thru® II Steam-in-Place connector.



MPC



Add ease of use and security to your most critical fluid handling applications



MPX



Full line of connectors and configurations, including pressure sealing caps and plugs.



Steam-Thru Connections



Quick and easy sterile connection between biopharmaceutical processing equipment and disposable bag and tube assemblies



HFC39



Aseptic disconnect functionality with automatic shutoff valves.



Single-use Pumps



Quattroflow™ single-use pumps are equipped with a product-wetted plastic pump chamber that can be replaced as a complete unit for disposal.



**Sartopore[®] 2 XLM
MaxiCaps[®]** | **SARTORIUS**

Sartopore[®] 2 is the industry standard of high-performance polyethersulfone (PES) liquid filters. A broad variety of different pore size combinations ensures highly economic and safe filtration performance. From single-layer high flow solutions to specific Mycoplasma retentive filters, Sartopore[®]2 perfectly adapts to your specific process needs.



**Sartopore[®] 2 XLM
MaxiCaps[®]** | **SARTORIUS**

Sartopore[®] 2 is the industry standard of high-performance polyethersulfone (PES) liquid filters. A broad variety of different pore size combinations ensures highly economic and safe filtration performance. From single-layer high flow solutions to specific Mycoplasma retentive filters, Sartopore[®]2 perfectly adapts to your specific process needs.