

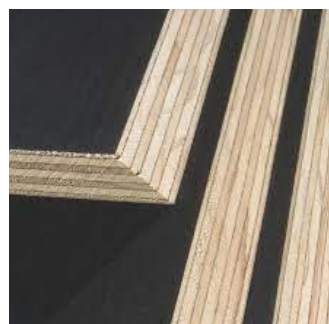
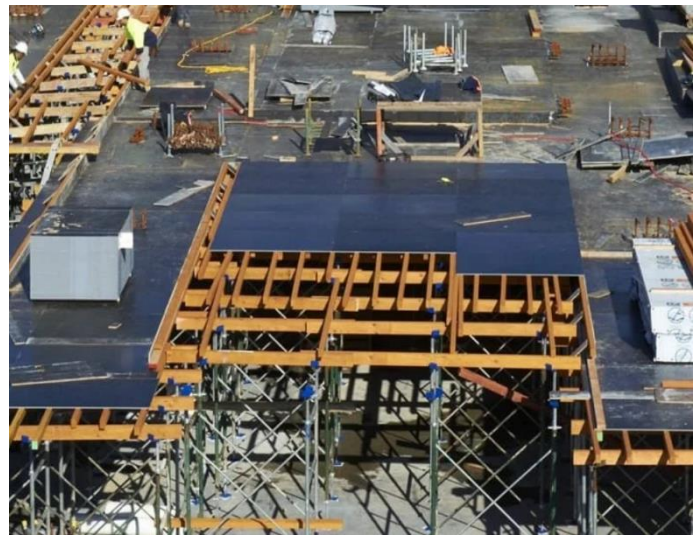
# FURUIDA FORMWORK PLYWOOD:

## TECHNICAL SPECIFICATIONS



Transform your projects with our top-of-the-line F17 Plywood! Crafted to Australian Standards. Furuida FormPly comprises eucalyptus and birch plywood, offering a cost-effective and versatile solution for concrete construction pouring applications. It serves as an ideal face panel for various formwork systems, including steel frame, single-sided, timber beam, steel props, and scaffolding systems.

• <b>Type</b>	Engineered Plywood
• <b>Origin</b>	China
• <b>Construction</b>	Birch Veneers; Eucalyptus Core
• <b>Pattern</b>	Single Strip
• <b>Thickness</b>	17mm
• <b>Width</b>	1200mm
• <b>Length</b>	2400mm/1800mm
• <b>Surface Finish</b>	Black Film – Phenolic resin coating
• <b>Edging</b>	Square Edge
• <b>Stress Grade</b>	F17
• <b>Edge Seal</b>	2 layers acrylic paint
• <b>Sheet Coverage</b>	2.888 / 2.16m <sup>2</sup>
• <b>Weight/Sheet</b>	23 kg/31kg
• <b>Bond</b>	A-Bond(phenolic Resin)
• <b>Formaldehyde</b>	Super E0
• <b>Environmental</b>	FSC certified
• <b>Application</b>	Civil Engineering; Mining; Table Forms; Deck Ceilings
• <b>Tolerance</b>	+/- 0.5mm Thick; +/-1mm Square
• <b>Australian Standard</b>	AS/NZ 6669-2016



**ECO FLOORING SYSTEMS®**

— SINCE 1996 —  
 Eco Flooring Australia Pty Ltd.  
 180, Toongabbie Road,  
 Girraween 2145 NSW  
 Ph: 02 9631 7400  
[www.ecoflooring.com.au](http://www.ecoflooring.com.au)  
[Sales@ecoflooring.com.au](mailto:Sales@ecoflooring.com.au)





# Preparation and Maintenance

Proper handling and maintenance are essential for prolonging the lifespan of plywood panels. This guide offers instructions on how to handle and utilize Furuida formwork plywood effectively to optimize results and increase the number of reuses. Below are the recommended steps:

## Storage and Transportation:

- Place the plywood on leveled ground to prevent bending.
- Once the strapping is removed, refrain from moving the pallet.
- Shield the panels from water and direct sunlight exposure.

## Preparation and Forming:

- Furuida Plywood's F17 Formply comes with all edges coated to shield against moisture. Ensure to reapply this protection after cutting or drilling.
- Fill any gaps between veneers with putty and seal the edges afterward.
- Prior to drilling, pilot tie-rod holes.
- Apply an edge sealant by painting unprotected edges and drilling holes at least once. Consult your local paint supplier for the appropriate sealant.
- Before each use, apply oil to the panels and opt for a high-quality, eco-friendly concrete release agent.
- To minimize surface damage, secure support to the panel from its rear.

## Reducing the 'Rippling' Effect:

Concrete finish quality and plywood formwork reusability are influenced by on-site conditions. Plywood is typically delivered in a relatively dry state (<15% mc). Initial exposure to site conditions and early panel use may lead to localized swelling of the wood veneer, causing impressions on the concrete surface, known as 'rippling.'

- Prior to initial use, condition plywood by applying a wet cement slurry or grout wash to mitigate noticeable swelling.

## After Use:

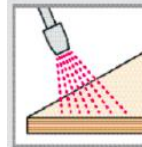
- Promptly clean plywood panels post-use.
- Utilize plastic or nylon tools to prevent surface damage.
- Degrease the surface with soapy water before reapplying a release agent.
- Address small scratches with suitable mastic.
- Fill holes or scratches with mastic or epoxy filler as needed.



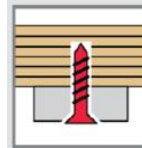
**Protect from weather**



**Seal edges & holes**



**Oil panels before use**



**Fasten from the back**



**Clean panels after use**



**ECO FLOORING SYSTEMS®**  
— SINCE 1996 —

Eco Flooring Australia Pty Ltd.  
180, Toongabbie Road,  
Girraween 2145 NSW  
Ph: 02 9631 7400  
[www.ecoflooring.com.au](http://www.ecoflooring.com.au)  
[Sales@ecoflooring.com.au](mailto:Sales@ecoflooring.com.au)