



LAMINATE  
COLLECTION



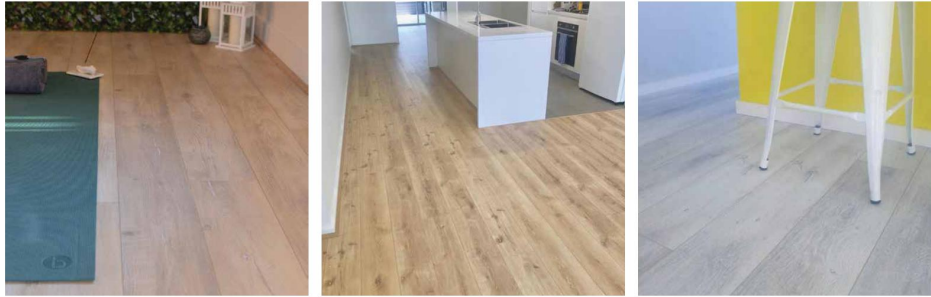
SWISH  
LAMINATE FLOORING



SWISH  
LAMINATE FLOORING  
AQUA



NATURAL TOUCH LONGBOARD  
LAMINATE FLOORING



# Swish Longboard Laminate Flooring

If you are looking for a more affordable alternative to concrete or wooden flooring, we are pleased to present our Swish longboard laminate flooring.

Our range of Swish laminate flooring is just what you need to make your house chic and contemporary. Swish longboard laminate flooring allows for more experimentation in your floor designs.

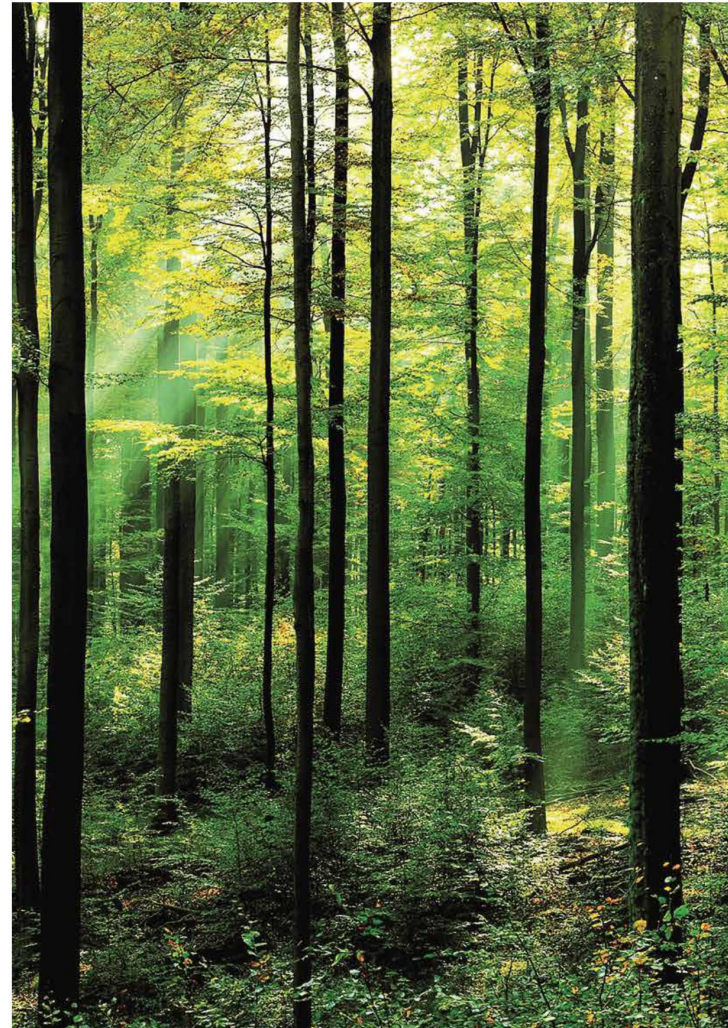


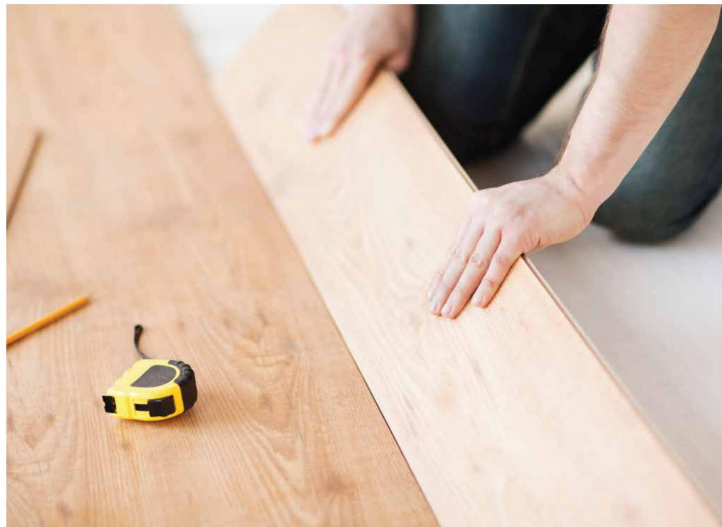
You can choose from a wide variety of flooring material. The flooring material permits putting your imagination and fantasy into action. The look of the laminate floor will also support your décor ideas making your house as classy as you would want.



# Benefits

-  **Versatility in design.** You can choose from a wide variety of laminate flooring that replicate the feel and touch of wood patterns. Our grains and knots are uniquely embossed to mimic natural wood in the best way possible.
-  **Easy maintenance.** Laminate flooring is very easy to clean. Dry cleaning such as sweeping, dusting and vacuuming is very easy on this surface.
-  **More affordable.** Laminate flooring is less costly than hardwood to purchase.
-  **Easy installation.** Swish laminate flooring comes easy to install. The Valinge click planks are easy to lay with minimal labor, making it very cost effective.





# Features

Swish laminate flooring is a premium product with world class workmanship and excellence going into the design.

- Length of planks at 2200 mm (2.2m) which is apt for large spaces
- Plank width of 196 mm (0.196 m)
- Board thickness at 12 mm for more sturdiness
- EIR embossing of grains and knots to make the surface feel more natural to touch
- Waxed edges for better water resistance
- All accessories provided
- AC4 scratch resistance rating
- 20 years residential warranty



# SWISH LONGBOARD LAMINATE COLLECTION

Size: 2200 x 196 x 12mm



Realistic  
oak looking



Scratch  
resistant



Suitable for  
subfloor heating



Cigarette  
burn resistant





Swish laminate aqua – Blackbutt



# Swish Laminate Flooring Aqua

Swish laminate aqua flooring is the perfect flooring product for moisture-laden areas like the kitchen or the bathroom. It's moisture resistant, but also slip resistant, making it safe to walk on when wet. Swish laminate Aqua range is produced from natural sustainable raw HDF wood fibre materials. There is a 25 year guarantee on this flooring, which shows high confidence in its quality.

## TECHNICAL SPECIFICATIONS:

- **Type:** Laminate Floating Floor
- **Thickness:** 12.3mm
- **Width:** 196mm
- **Length:** 2200mm
- **Surface Finish:** Matt Finish | EIR Natural Wood Grain Embossed
- **Edging:** 4 Side Micro-Bevelled Edge
- **Profile:** Valinge Drop Lock
- **Installation Method:** Floating, glue less on top of underlay
- **Pack Size:** 2.16 m<sup>2</sup>
- **Boards per pack:** 5
- **Abrasion Resistance:** AC5

Applications: For use in interior areas of private homes and commercial establishments



# SWISH AQUA LAMINATE COLLECTION

2200 x 196 x 12mm





# SWISH AQUA LAMINATE COLLECTION

2200 x 196 x 12mm



# SWISH AQUA LAMINATE COLLECTION

2200 x 196 x 12mm





# SWISH AQUA LAMINATE COLLECTION

2200 x 196 x 12mm



# Swish Aqua Laminate Inspirations





# Swish Aqua Laminate Inspirations



Smooth Blackbutt



Oak Fremont



Fendi Oak

# What is Swish laminate aqua?

This is a range of stylish laminate flooring that is to mimic natural looking decors and Australian species designs. Swish Aqua laminate is made with an eye for beauty. It is an aesthetically pleasing flooring that has been made to the highest quality. It is not only warm and aesthetic but also super and tough enough to resist scratches.

## WHAT SETS IT APART FROM THE REST?

Swish laminate aqua range is a notch above the rest of laminate flooring competing products. Here are a few reasons why it stands a cut above the rest.

- **Aqua core** – Swish laminate Aqua features a super low swelling HDF wood core. This makes it possible to lay the boards 32 meters in both directions without expansion gaps in the middle. This is a huge plus if you are flooring a large space. The floor maintains a more uniform look.
- **Easy installation**- This flooring feature the world's best Valinge click lock systems. This locking technology makes it easier and faster to install the flooring. No glues or nails are required. It is possible to install this flooring without heavy duty tools. Your hand's fingertips are enough for most of the work
- **Natural touch surface**- Swish laminate aqua range also strongly resembles natural Australian wood species. The patterns are embossed for a registered real wood feel.

- **Water resistant**- This flooring will withstand normal household spills up to 48 hours.
- **Super tough scratch resistance**- The surface has an AC5 rating. It also impacts resistant meaning items can be dropped on it without denting or chipping.
- **Effortless cleaning**- Swish laminate aqua flooring can be cleaned quickly. It is safe to clean with soap and water
- **Low maintenance and hard wearing** – It does not require sanding or staining like natural wood. The resistant surface makes this flooring suitable even for high foot traffic areas. The floor is also stain resistant making it maintain its looks even in a household with children and pets.
- **Non-fading** – This flooring will not require painting or staining as the covering coat does not fade easily.
- **Flame resistant** – This is safer to build with especially for a residential house





# Accessories

Laminate Stair Bull nosing gives you the perfect finish to your stairs. The perfect fit Tongue and Groove profile connects seamlessly, giving your stair case a complete makeover! Available in our 12mm Swish longboard laminate and Aqua laminate range.

- 2400 x 110 x 12mm (l x w x h)
- Bull nose is used to finish the edge of stairs and step-down areas
- Durable design to handle everyday foot traffic on the edge of stairs
- Simply clean with a damp cloth
- No painting or staining necessary
- Residential use only
- Note: Actual item color in the picture may differ from the actual product

## ***Eco flooring Ezi-lay***

All in one underlay is composed of a light 2mm polyethylene with an integral damp proof membrane and sound insulation qualities are ideal for Swish engineered oak floors.

- 2- in -1 Moisture Control
- Conceals Minor Sub- floor Defect
- Reduces Noise Level
- LIFE TIME WARRANTY
- AAAC 4 Stars Rating

For Use Under: All Laminate, All Engineered, All Wood Flooring