

STASUN

**LED DUSK-TO-DAWN
FLOOD LIGHT**

Instruction Manual

Thanks for purchasing STASUN products! Please read this manual carefully before operation and keep this manual for future reference.

SAFETY INSTRUCTIONS

Risk of electric shock!

1. Confirm the input voltage and frequency before use.
2. Turn off the power before installing or servicing.
3. Must have a qualified electrician install this light.
4. Keep out of the reach of children.
5. Do not touch or install the light with wet hands.
6. Do not install on flammable surfaces, such as plastics.
7. Do not cover the device. Keep it away from the heat source.
8. Never look directly at the lighted illuminant.
9. Non-professionals are forbidden to disassemble, repair or modify this product.



Note: The light source of this light is not replaceable, the whole light should be replaced when it reaches the end of life.

The appropriate operating temperature of the fixture ranges from -20°C to 50°C.

PARAMETER

Wattage	Input Voltage	Frequency	Input Current	Lumious Flux	Color Temperature	Ingress Protection	Mounting Height
90W	110~130V AC	60Hz	0.82A	8,100LM	5000K± 300K	IP66	≤ 6M/20FT
150W	110~130V AC	60Hz	1.40A	13,500LM	5000K± 300K	IP66	≤8M/26FT
300W	110~130V AC	60Hz	2.73A	27,000LM	5000K± 300K	IP66	≤ 10M/33FT

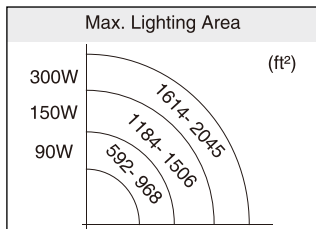
OPERATION MODE

D2D Mode: This dusk-to-dawn light has a photocell unit that automatically turns light on at dusk and off at dawn.

Ambient Light Threshold: 10-20 LUX 1 ON 30-80 LUX / OFF

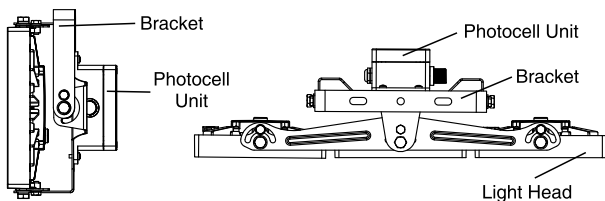
SAFETY INSTRUCTIONS

Wattage	Max. Lighting Area
90W	55-90m ² / 592-968ft ²
150W	110-140m ² / 1184- 1506ft ²
300W	150-190m ² / 1614- 2045ft ²

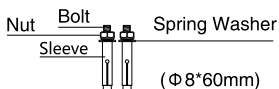


LIGHT STRUCTURE

Three-Head Light



MOUNTING ACCESSORIES



2 x Expansion Bolts



2 x Allen Wrenches

Tools Required (Not Included):

Drill, Hammer, Wrench, Pen, Eye Protection, Stepladder

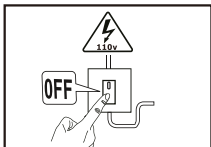
** Before installation, please make sure the light is in good condition and accessories are complete.

INSTALLATION INSTRUCTION

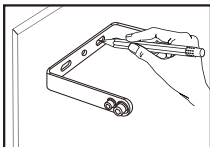
Connect the cable correspondingly.

L	LIVE	BLACK	***IMPORTANT*** Switch off the electricity at the fuse box/circuit breaker before proceeding with the installation.
N	NEUTRAL	WHITE	
≡	EARTH	GREEN	

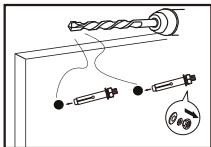
Step 1 Switch off the power.



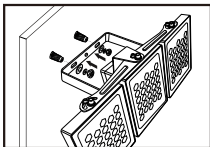
Step 2 Mark the mount holes.



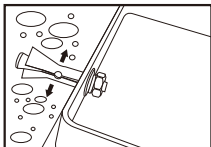
Step 3 Drill holes and insert the whole expansion bolts into the holes, then unscrew nuts and spring washers.



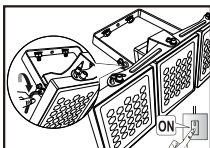
Step 4 Place the fixture over the bolts, repute the spring washers and nuts.



Step 5 Screw the nuts tightly to expand the sleeves.



Step 6 Adjust the light heads by provided wrenches. The installation is complete. Turn on the power.



****Please lift the fixture by hold the bracket instead of pulling the cable.****

MAINTENANCE

****Make sure the power is off before maintenance.**

1. Please periodically clean the surface of the light with a clean damp cloth.
2. Do not use any detergents or chemicals.

DISPOSAL

Please dispose of the light according to local regulations. For more information about electronic and electrical waste equipment disposal, recovery and collection points, please contact your local authority for details of recycling schemes in your area.

=====

CONTACT:

✉ led@stasun.us

🌐 www.stasun.us

NOTE:

If you experience problems, please contact us through the above contact, STASUN qualified customer service will assist in resolving your query.

