

Product Overview

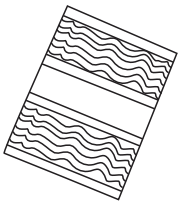
Ensure your stadium light will shine where you need it to with the LYRA Stadium Light Laser Sight

Specifications:

Type	Click (50yards)		Operating Temp.	Total Size	Mount	Battery		Beam Spot (15yards) Max
	UP	Left				Type	Qty	
EL888007	33mm	33mm	-10°C-40°C	φ25.8x120	Special mount "8" type 25.4x25.4	LC 16340	1	18mm

- Installing a Battery: Unscrew the back of end of the laser sight and insert the positive pole of the battery (+) into the laser sight. Replace the back end of the last sight thereafter.
- These laser sight are parallax free to 50 yards, minimizing any potential aiming errors despite the large distance between the light and the target area.
- The laser sight should be protected from water, dust, and heat.
- If the laser sight is to be stored for a long period of time (2 months or more), remove the battery from the laser sight to prevent corrosion.

• Parts:



Adhesive Velcro



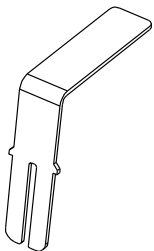
Hex Key



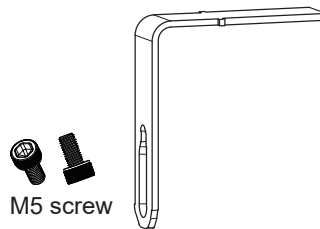
On/Off Button Extension



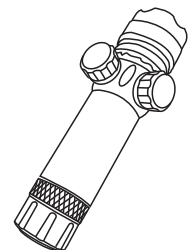
Laser Holder



300W/400W/500W
"L" type Holder



M5 screw
680W & 800W & 1200W
"L" type Bracket



Laser Sight

Laser Sight for the 300W/400W/500W Model of the LYRA LED Stadium Light

Precision Laser Aiming by Coordinates:

Laser aiming is the most effective and preferred technique for aiming sports lighting. This method uses a laser mounted to the luminaire to point the fixture at a predetermined point on the playing surface using (X, Y) coordinates. Unless otherwise noted, aiming coordinates on photometric or project installation drawings are based on the origin (0,0,0) placed at the center field, court, or ice. All dimensions from that point are in feet along the playing surface unless otherwise noted.

⚠ WARNING

NEVER point the laser sight at any person or animal as it can cause permanent damage to the eyes. Only aim the laser at the target surface as directed. FAILURE TO FOLLOW THIS WARNING MAY LEAD TO SEVERE INJURY.

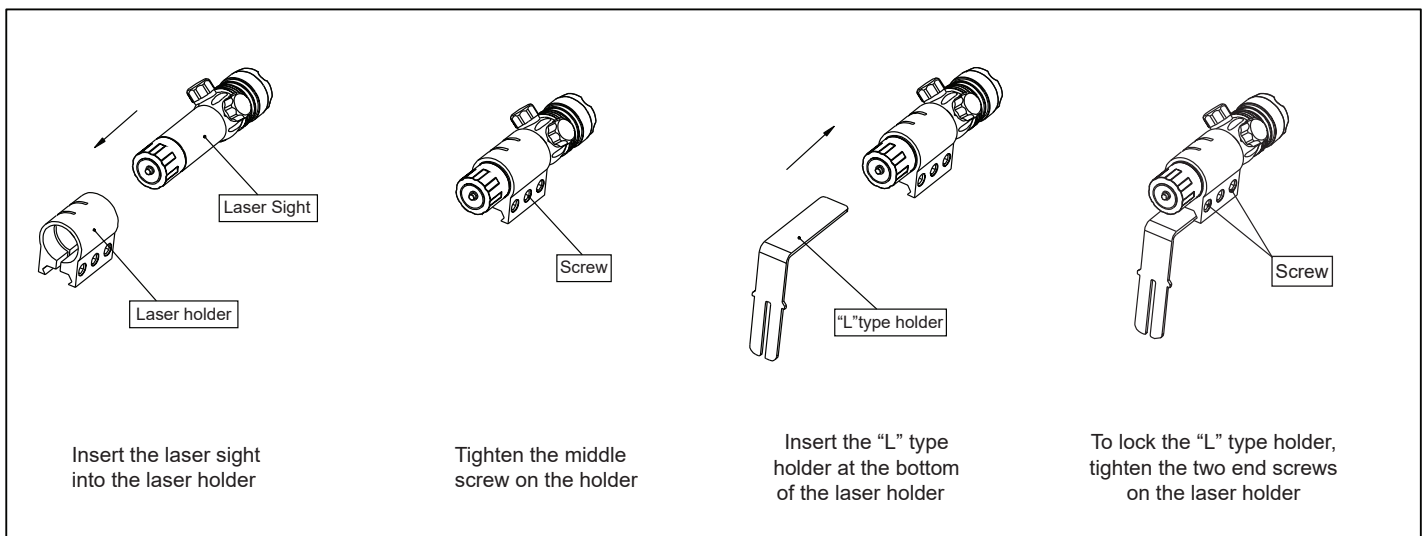


Figure 1. Laser Components

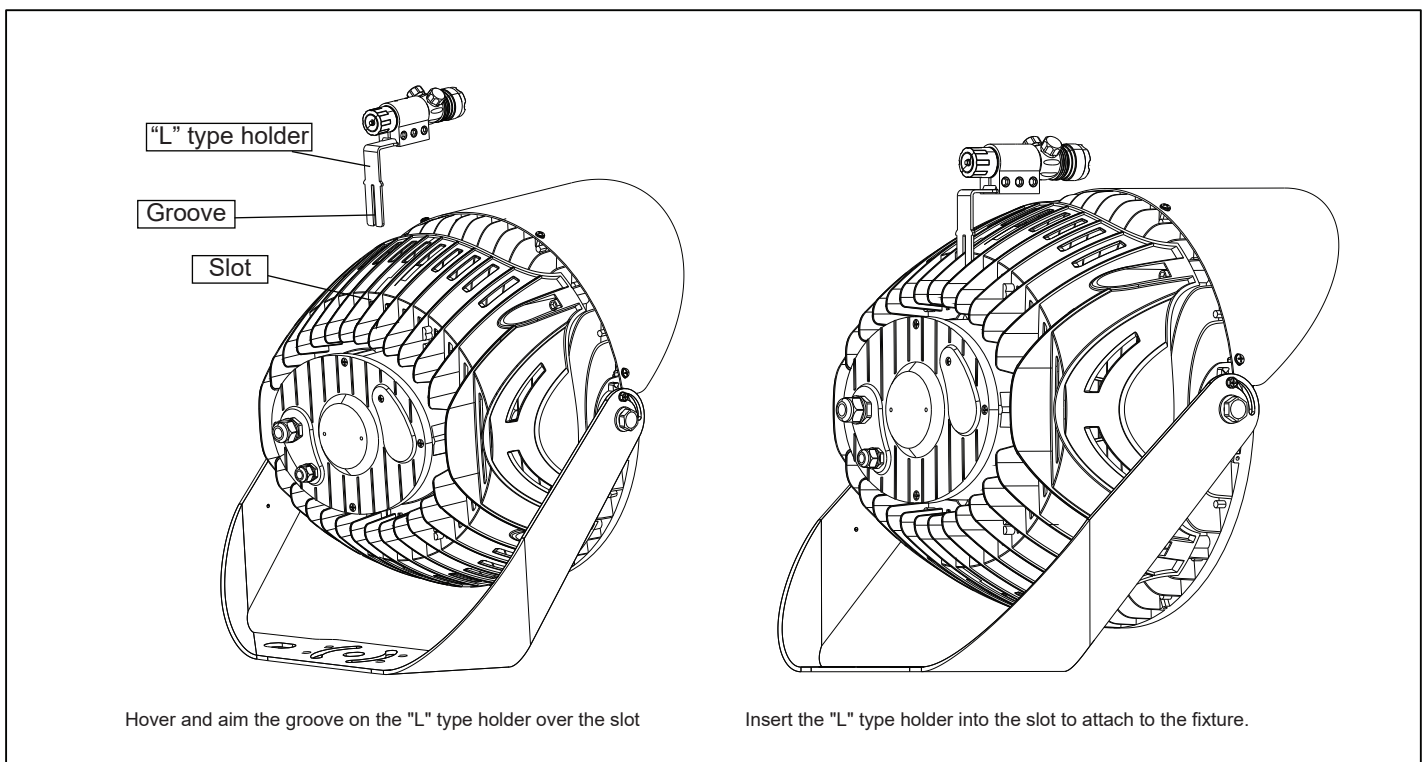


Figure 2. Laser Installation

Laser Sight for the 680W, 800W, & 1200W Models of the LYRA LED Stadium Light

Precision Laser Aiming by Coordinates:

Laser aiming is the most effective and preferred technique for aiming sports lighting. This method uses a laser mounted to the luminaire to point the fixture at a predetermined point on the playing surface using (X, Y) coordinates. Unless otherwise noted, aiming coordinates on photometric or project installation drawings are based on the origin (0,0,0) placed at the center field, court, or ice. All dimensions from that point are in feet along the playing surface unless otherwise noted.

WARNING

NEVER point the laser at any person or animal as it can cause permanent damage to the eyes. Only aim the laser sight at target surface areas as directed. **FAILURE TO FOLLOW THIS WARNING MAY LEAD TO SEVERE INJURY.**

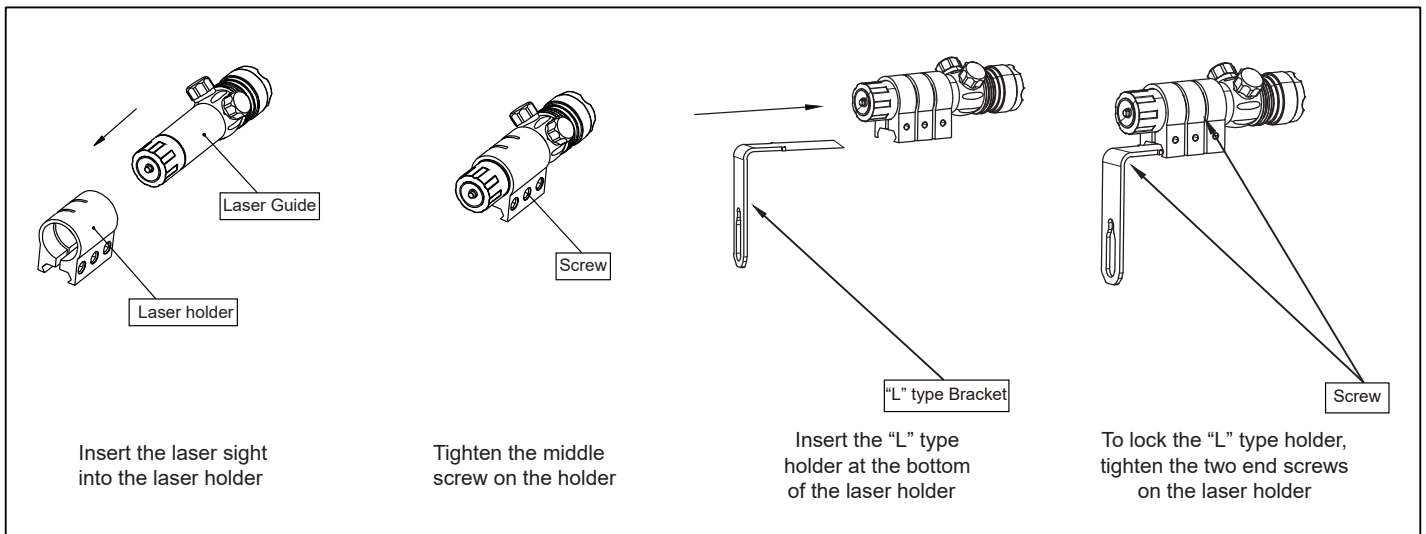


Figure 1. Laser Components

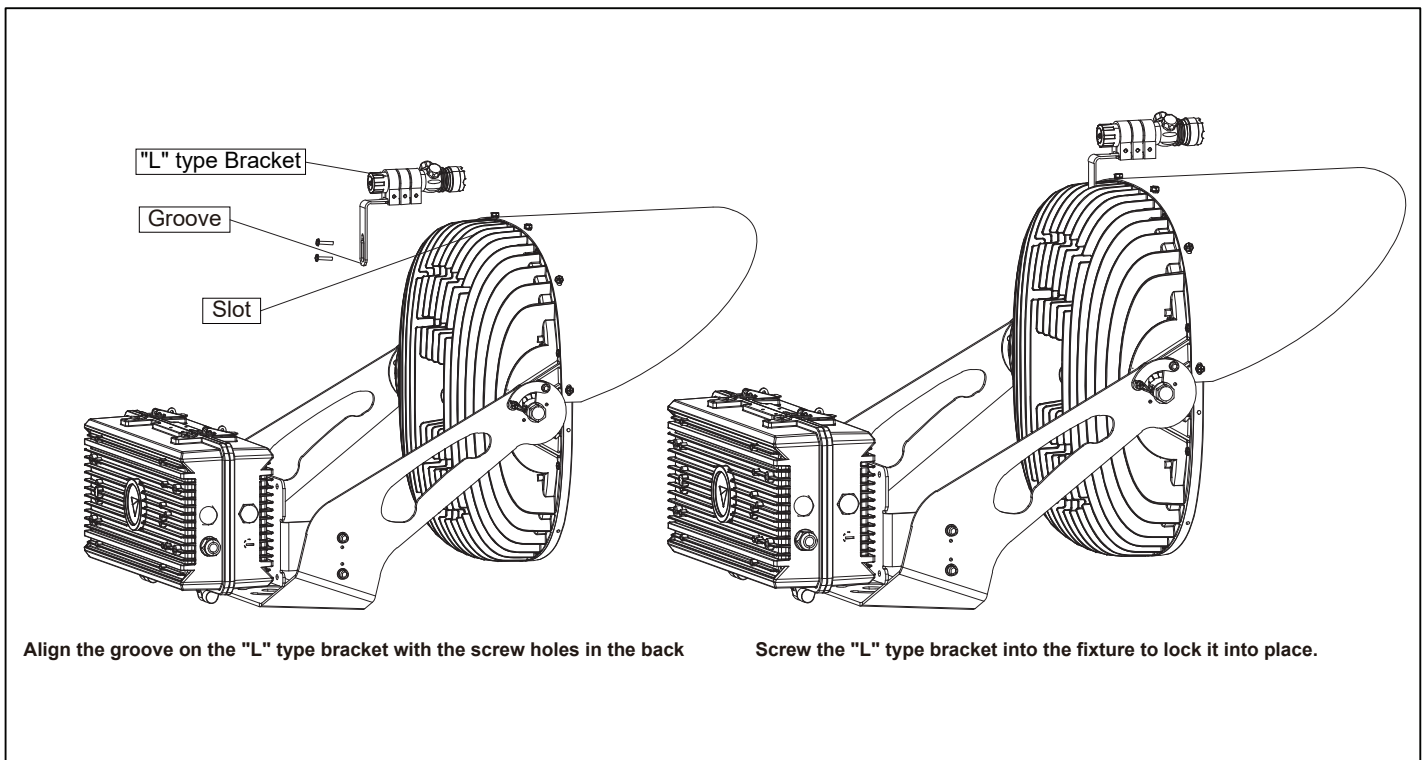


Figure 2. Laser Installation