



GABRIEL SCOTT

EST. 2012



Welles by David Rockwell

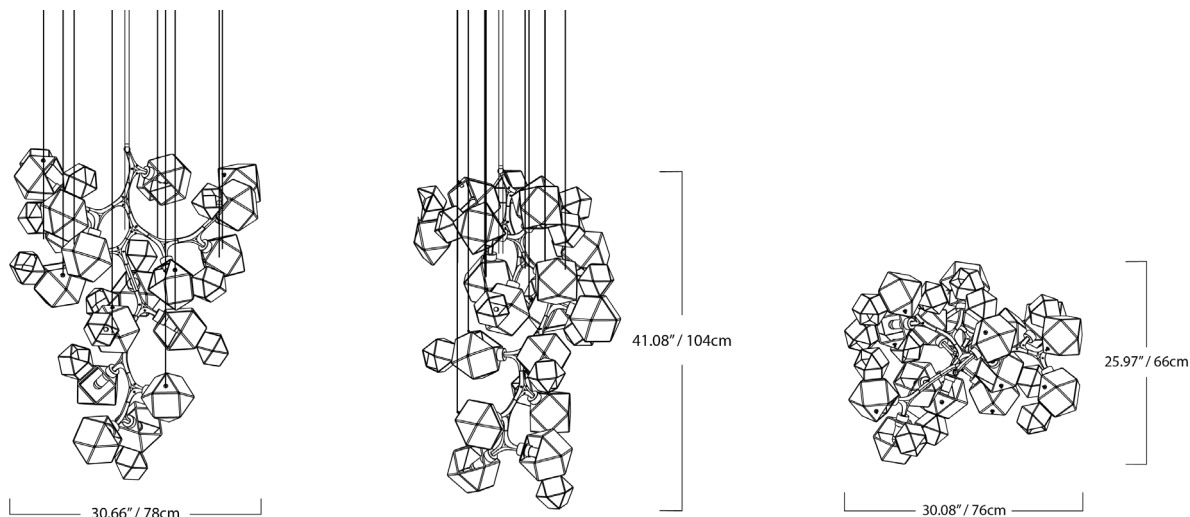
Central Chandelier

in Blackened Steel, Smoked
Purple & Smoked Gray

**rockwell
group**

The David Rockwell capsule collection celebrates the Welles Chandelier's classic geometric form, while creating a contemporary light fixture inspired by clusters found in nature, such as crystals, chemical compounds, and clouds.

The Welles Central Chandelier by David Rockwell is defined by its luxe volume and organic nature, with hollowed glass polygons that come together at varying heights and dimensions to form a floating light cluster. David Rockwell's capsule collection also includes a long chandelier, triple wall sconce and pendant.



SPECIFICATIONS

Standard Finishes:

Blown Glass: Smoked Purple or Smoked Gray

Metal: Blackened Steel, Satin Nickel,
Satin Brass, Satin Copper or Satin Bronze

Specifications:

Dimensions: 30.66" x 25.97" x 41.08" H + Drop

78 cm x 66 cm x 104 cm H + Drop

Weight: 50.8 lbs / 23 kg

Light Source: 12V 6 Watt LED (included)

LED Drivers: E60L12DC-KO - 110V
UVC1250TD - 220V

Total Wattage (nominal): 28.9 w
Lumens (total): 5780 lm

Stems & Canopies:

Standard Stem Lengths: 6", 12", 18" or 24"

15 cm, 31 cm, 46 cm or 61 cm

Additional Stem Lengths: 30", 36", 42" or 48"

76 cm, 91 cm, 107 cm or 122 cm
(up-charge applies)

Standard Canopy: 5" x 0.5" / 12 cm x 1.3 cm

Deep Canopy: Available upon request.

Custom finishes available upon inquiry.

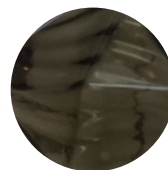
Made and assembled in Canada.

STANDARD FINISHES

Blown Glass:

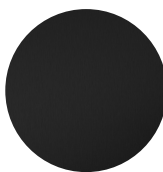


Smoked Purple



Smoked Gray

Metal:



Blackened Steel



Satin Nickel



Satin Brass



Satin Copper

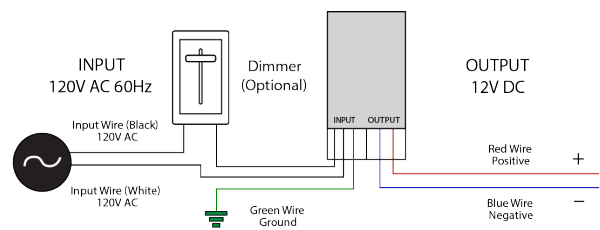
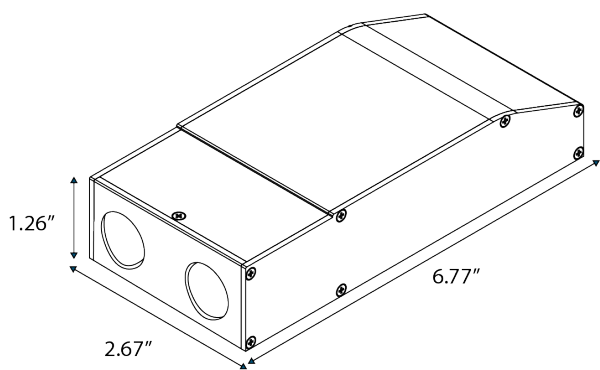


Satin Bronze

LED DRIVER

E60L12DC-KO - 110V

Magnitude's E60L12DC-KO dimmable voltage LED driver is class 2 rated and designed to operate with any standard MLV/ Incandescent TRIAC (Leading edge) dimmer switch. Encased in a low prole aluminum enclosure that includes 2 knock-outs to enable easy installation makes it the perfect choice for under cabinet lights, tape lights and various LED fixtures installations. Our electrical specication includes Auto Reset, over current and short circuit protection. Efficiency of 90% and higher allows the driver to operate at low temperatures.



Features:

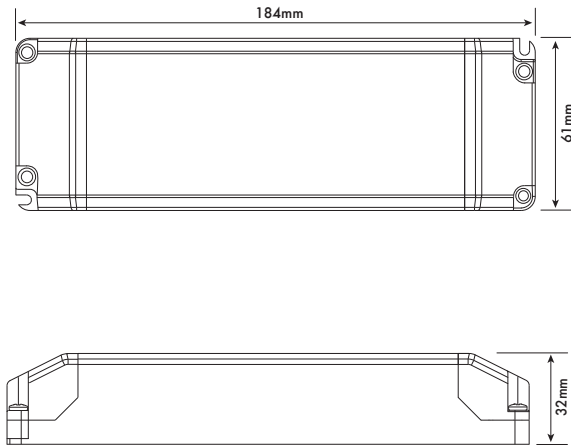
- Dimmable with any standard MLV/Incandescent TRI-AC- (Leading edge) dimmer switch.
- Super compact ALUMINUM CASE.
- Class 2
- UL 8750
- IP67 - Withstands wet and salty conditions.
- Nema 3R - Outdoor Use
- Auto-Reset Protection for short circuits & over-voltage.
- FCC 15 part 2
- 12V DC True RMS

Specifications:

| | |
|-----------------------------|---------------------------|
| Max Load | 60W |
| Input Voltage | 120V AC |
| Input Current at Max Load | 0.61 A |
| Output Voltage | 12V DC |
| Output Current at Max load | 5.26 A |
| Power Factor | 0.95 |
| Efficiency | > 90 % |
| Operating Temp. | -20c - 70c (-4F -158F) |
| Short Circuit Protection | Yes |
| Overcurrent Protection | Yes |
| Over Temperature | Yes |
| Open Circuit Protections | Yes |
| Input Wires (White / Black) | 14 AWG |
| Output Wires (Red / Black) | 18 AWG |
| Weight | 481g |
| Dimensions (inches) | 6.77" x 2.67" x 1.26" |
| Dimensions (cm) | 17.2 cm x 6.8 cm x 3.2 cm |

LED DRIVER

UVC1250TD - 220V



Features:

- Constant voltage output
- Fully isolated
- Short circuit, over current and over voltage protection up to 80% efficient.
- Fire resistant plastic cover
- Compatible with leading and trailing edge dimmers
- 20 ~ 100% Dimming Load and Dimming range
- Mains dimmable
- Screw terminals
- IP44 design for indoor use
- 2 years warranty

Specifications:

| | |
|-----------------------|-----------------------------|
| Part Code | UVC1250TD UVC2450TD |
| Voltage | 220V ~ 240VAC |
| Frequency | 50-60 Hz |
| Current | 0.4A |
| Inrush Current | <2.5A |
| Power Factor | 0.95 |
| Load Voltage | 12V |
| No Load Voltage | 12V |
| Current | 4.16A |
| Power | 50W |
| Power Factor | >0.95 |
| Efficiency (TYP) | >80% |
| Over Load | Auto-recovery |
| Short Circuit | Auto-recovery |
| Over Voltage | Auto-recovery |
| Operating Temperature | -20 ~ +50°C |
| Storage Temperature | -40 ~ +70°C |
| Relative Humidity | 5 ~ 95% |
| Lifetime | 50K hrs at TC max (85°C) |
| Connections | Screw terminal on I/P & O/P |
| Weight | 200g |
| Dimensions (inches) | 7.2" x 2.4" x 1.25" |
| Dimensions (cm) | 18.4 cm x 6 cm x 3.2 cm |