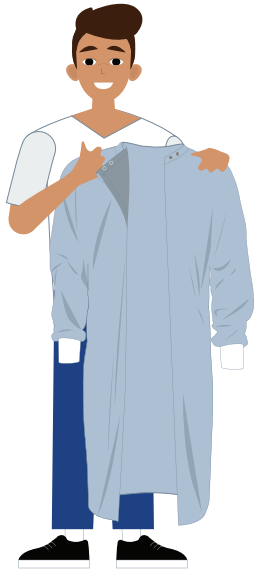
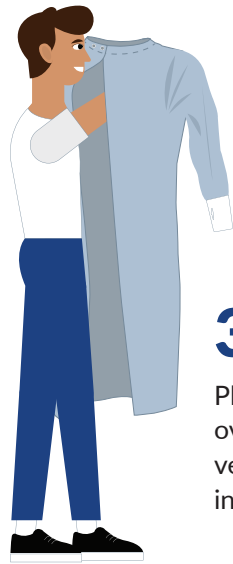


PUTTING ON GOWN

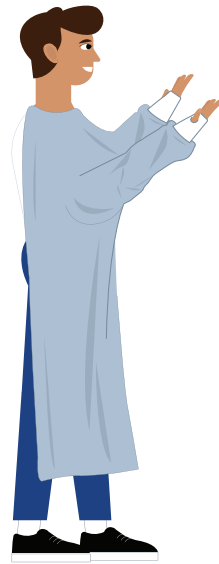


1.
Perform Hand Hygiene.

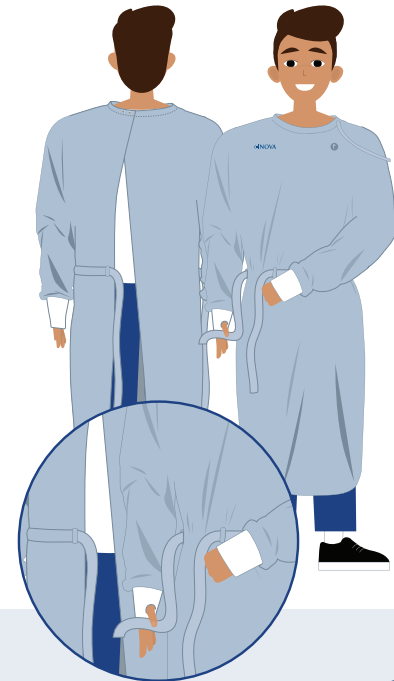


2.
Set snaps to desired neck width.

3.
Place the gown over head with vertical opening in back.

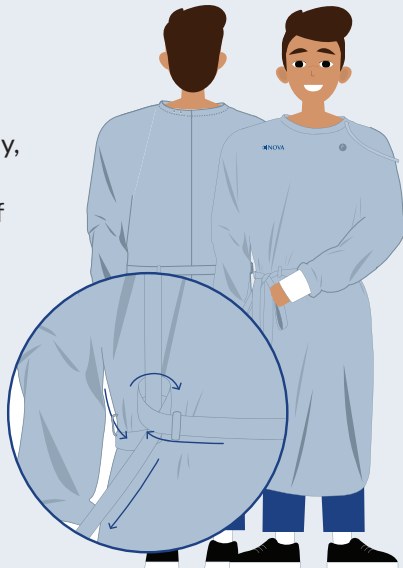


4.
Extend arms through the sleeves and insert hands into the wrist guard and thumb hole for secure closure.

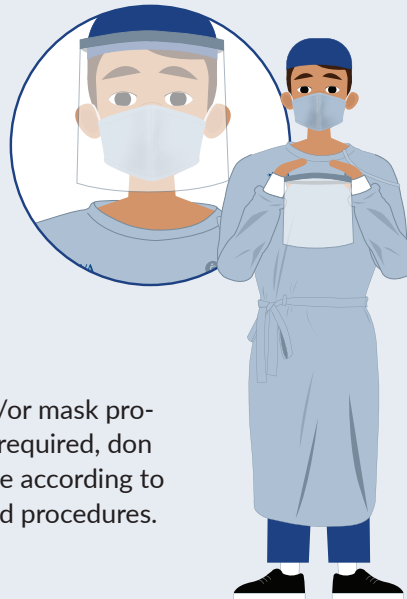


5.
Pull belt tie through belt loops.

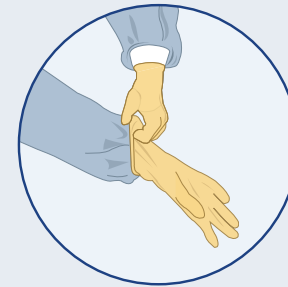
6.
Securely tie belt to the side of the body, ensuring vertical opening on back of gown is closed.



7.
If eye and/or mask protection is required, don at this time according to established procedures.



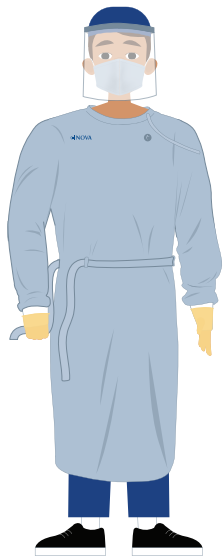
8.
Perform hand hygiene. Put on gloves and extend to cover the wrist.



SCAN FOR INSTRUCTIONAL VIDEO

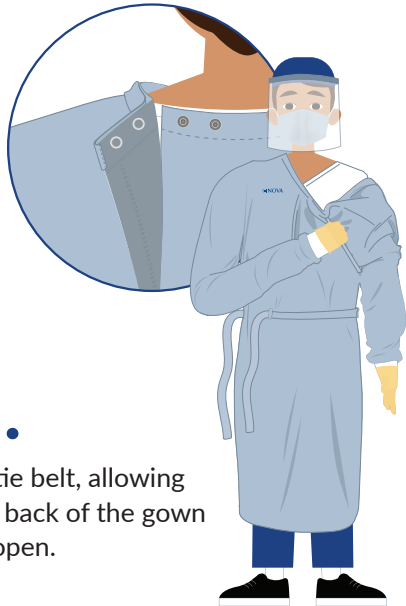


REMOVING GOWN



1.

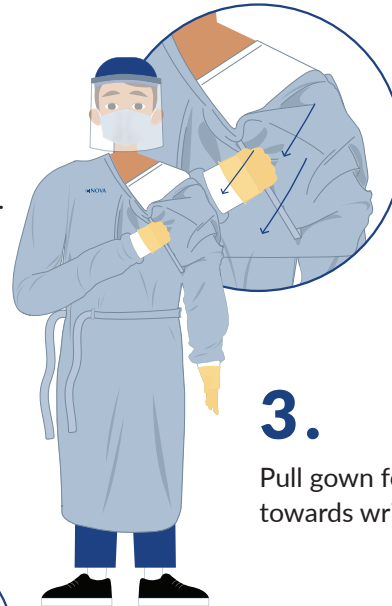
Untie belt, allowing the back of the gown to open.



2.

Snaps along neck line are connected to an easy to grasp pull-cord.

Remove the gown by pulling down on the pull-cord in one swift motion, disconnecting the snaps.



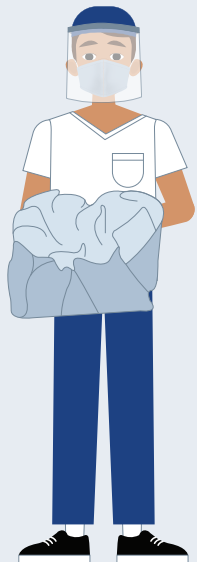
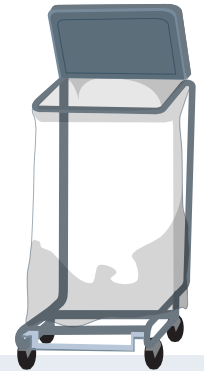
3.

Pull gown forward towards wrists.



4.

Remove gloves and dispose in the waste container.



5.

Allow the gown to slide down off the arms inside out. Touching only the inside of the gown, roll the gown on itself into a ball and place in linen hamper.

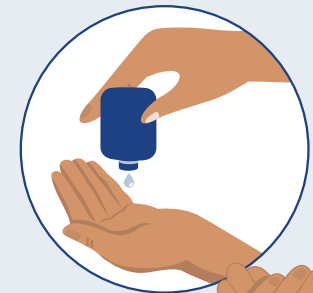


6.

Perform Hand Hygiene.

7.

If eye and/or mask protection is required, doff at this time according to established procedures.



8.

Perform hand hygiene immediately after removing all PPE.

SCAN FOR INSTRUCTIONAL VIDEO

