

INSTALLATION & MAINTENANCE MANUAL DC001

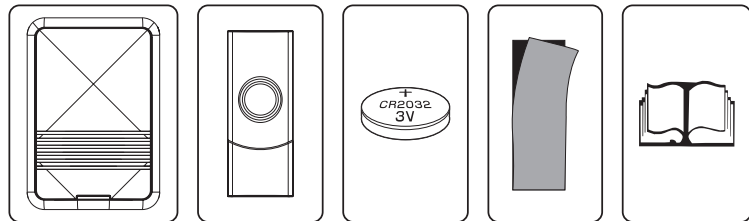
It is very important to install and operate this product according to the following instructions. Failure to do so may render your guarantee void.

Accessories list

The door chime kit comes with:

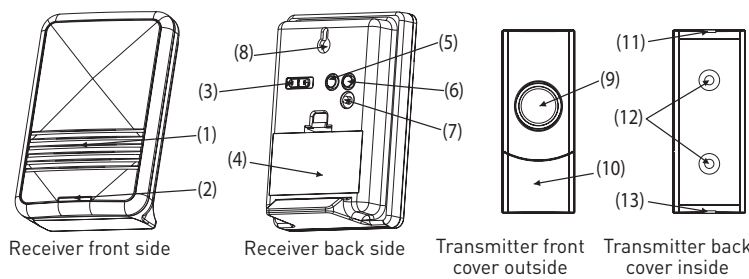
- 1 x Receiver
- 1 x Bell push
- 1 x 3V CR2032 battery for bell push
- 1 x Double-sided adhesive pad
- 1 x Instruction manual

Pictures for accessories



Receiver Transmitter CR2032 battery Double-sided adhesive Instruction manual

Names for parts



Receiver front side Receiver back side Transmitter front cover outside Transmitter back cover inside

Functions instructions

Door chime operation

Press the push button on the bell push unit once, a wireless signal is sent to the receiver which will sound. The sound will stop as soon as the melody ends. For repeated sound, press the button again. Please note, holding the button in will not repeat the sound.

Melody selection

There is a melody selector located on the back of the door chime on the right. Press the selector to choose a different melody.

Sound and flash

There is a switch on the back of the receiver on the left. Slide the switch to the left position: the receiver will work with sound only; slide to the middle position: the LED will flash only; slide to the right position for sound and LED flash.

Volume adjustment

There is a volume button between the melody selector and the sound-and-flash switch. Press to adjust the sound volume - high, medium or low.

Auto-learning code button

There is an auto-learning code button under the melody selector. If you want an additional bell push to work with the receiver, press the auto-learning code button once and the bell push will work with the receiver (please see detailed operation 'Auto-learning code set up' in this manual).

Nameplate

There is a nameplate position on the bell push for user identification. Remove the nameplate cover and put a suitable sized label with name or required information, and replace cover (label is not included with this kit).

Important

1. The receiver is designed for indoor use only
2. Do not mount the bell push onto any metal surface or PVCu doorframes, as this will reduce the operation range
3. Do not expose either unit directly to rain or immerse in water
4. Do not mount either unit close to a fireplace or expose to high temperatures
5. If leaving the door chime for long periods, please remove the battery from compartment to prevent leakage
6. Please dispose of old batteries in accordance with relevant legislation

Names of parts

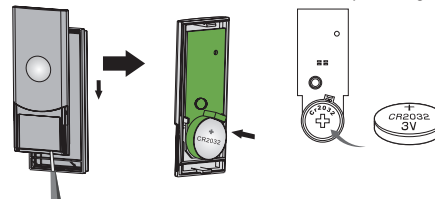
2. LED indicator	8. Hanging slot
3. Sound-and-flash switch	9. Push button
4. Battery cover	10. Nameplate cover
5. Volume button	11. Front and back cover hook
6. Melody selector	12. Standby holes for screws
7. Auto learning code button	13. Interface

Notes before installation

1. Before installation and operation, you will require a drill, cross-head screwdriver, flat-head screwdriver, 2 x AA 1.5V batteries, fixing screws and wall plugs. These items are not supplied with this kit
2. Avoid positioning the bell push on metal frames
3. Avoid positioning above heat sources such as radiators, or in damp areas such as a kitchens or bathrooms

How to use the door chime kit

Pressing the bell push, a wireless signal will be sent to the receiver. The receiver will be activated and sound. The operating range is 200m (in the open air) and you can use the receiver virtually anywhere in the home (indoor use only). However, the transmission range will be reduced if the signal is transmitted through walls or ceilings. Metal or PVCu doorframes can also reduce the operating range.



Battery installation

Bell push unit

- The bell push uses a 3V CR2032 battery (included)
- Open the bell push by pushing in the interface located at the bottom with a flat-head screwdriver and insert the battery. Please note the correct battery polarity

Receiver unit

Remove the battery cover and insert 2 x 1.5V AA batteries (not included). Ensure battery polarity matches the internal markings.

User hints

If the receiver does not sound, please check the following:

- Flat batteries in either bell push or receivers - change the batteries
- Wrong battery polarity in either bell push or receivers - re-insert the batteries correctly
- Units are out of range - operate the receiver within the recommended operation range

Specification

Bell push unit

Power: 1x3V CR2032 battery (included)

Receiver unit

Power: 2 x 1.5V AA alkaline batteries (not included)

Operating temperature: -30 °C (to +400 °C)

Operating distance: 200 meters (in the open air) (265ft approx.- (in the open air and suitable conditions)

Selectable tone: Total 36 melodies available

Digital code type: Auto-learning

What is auto-learning code?

The bell push sends a wireless signal to the receiver. The receiver will automatically register and memorize the signal as an operation code.

The bell push can work with the receiver by using this code.

Auto-learning code set up

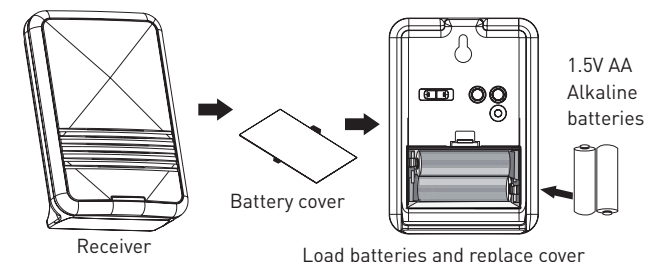
The door chime kit is equipped with auto-learning operation code ability.

1. Operation for 1 bell push and 1 receiver

After battery installation on both bell push and receiver, press the bell push once to generate a new operation code. The receiver will sound which indicates that a new operation code is registered and memorized

2. Interference from another door chime operating nearby (for example: receiver sounds for no reason): remove the batteries from the receiver and rest for 30 seconds. This will erase the memory. Insert the batteries, the bell push and receiver are ready for the new code registration

3. Operation for the 2nd / 3rd / 4th / 5th bell pushes and the receiver (there is only 1 bell push included with this kit):



Wall mount

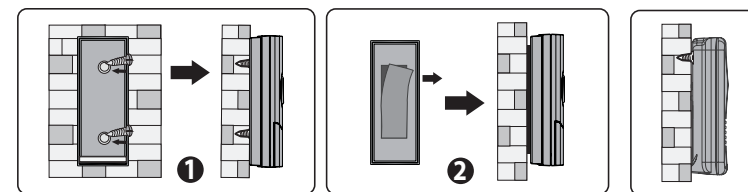
To install, you will require a drill and cross-head screwdriver.

IMPORTANT: Before you drill any hole in the wall, please make sure there are no cables or pipes that may accidentally be damaged.

Bell push unit

1. Open the bell push with a screwdriver and separate the front cover from the back cover (as previously described). Penetrate the two standby holes on the back cover with two screws, then fix the screws onto the wall at a suitable height (see picture 1).
2. Alternatively, you can attach the bell push with double-sided adhesive tape (see picture 2)

Mounting on PVCu or metal doorframe surfaces will reduce the transmitting range



Receiver unit

Fix a screw onto the wall and hang the receiver by the slot at the back of the unit. Avoid positioning on PVCu frames, above heat sources (e.g. radiators) or in damp areas such as a kitchens or bathrooms. Important: test the receiver before drilling any holes to ensure it is within recommended operating range.

Note: Alternatively, the receiver can also be placed on a flat surface.

(a) Insert the batteries into the bell push, the receiver is ready for the new code registration

(b) Press the auto-learning code button on the back of the receiver once, and it will be ready to receive the signal sent from the second bell push. Press the button of the bell push, the receiver will sound to indicate that new operation code is registered and memorized. Thus the second bell push works successfully with the receiver. For the 3rd, 4th, and 5th bell push, please follow the same procedure

(c) It is important to remember, when you replace dead batteries with new ones, please follow the auto-learning code set-up procedure as above

NOTES

(a) If the receiver sounds for no reason during the digital code setting, this indicates interference from another similar door chime nearby. Reset the auto-learning code (as per point 2 above)

(b) One receiver will work with maximum five bell pushes at the same time. If the bell push is missing a terminal, the bell push can be purchased separately and set up using the auto-learning code instructions above

IMPORTANT: PLEASE KEEP THESE INSTRUCTIONS FOR FUTURE REFERENCE WHEN REPLACING BATTERIES