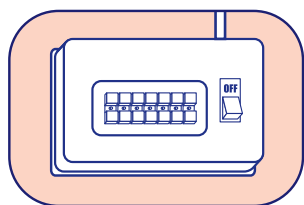


FOURWAY CONVERTER

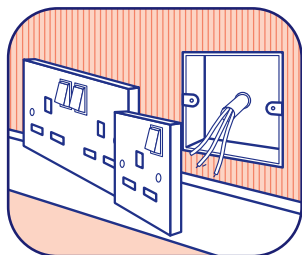
YOUR STEP BY STEP FITTING INSTRUCTIONS.

STEP 1



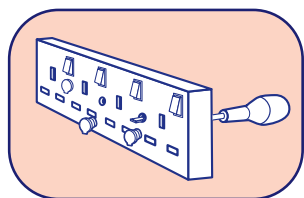
Switch off at the mains (fuse box/consumer unit). Remove the appropriate fuse or switch off circuit breaker (MCB).

STEP 2



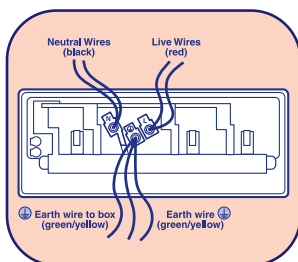
Remove and disconnect your existing single (or double) socket.

STEP 3



Remove the screw cap covers and installation screws from the polybag/accessory pack supplied.

STEP 4



Locate conductors into correct terminals. Ensure that all bare conductors are housed in their respective terminals before tightening the terminal screws.

Important note:

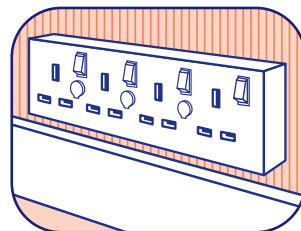
If a metal wall box is fitted then an earth connection is required between the Fourway Converter socket and the wall box. Use the piece of earth conductor approx: 100mm long covered with green/yellow sleeving provided.



STEP 5

Refit your Fourway Converter socket taking care not to trap any conductors. Secure using the two screws provided.

STEP 6



Fit the three round screw cap covers into place. Wipe clean with a dry cloth. Switch on at the mains.

ELECTRICITY IS DANGEROUS

If you are in any doubt or if there are any signs of damage to conductors or cables, consult a qualified electrician.

The Lyvia Fourway Converter socket is specially designed to fit a metal or good quality plastic (dry lining 25mm deep) wall box conforming to BS4662.

The Lyvia Fourway Converter socket is designed to meet the requirements of British Standard 1363 for fixed electrical installation, indoors only. Do not use outdoors.

Power sockets should be wired using 2.5mm² minimum three core cable.

The conductors must be
RED=LIVE
BLACK=NEUTRAL
GREEN/YELLOW=EARTH

