

MAINTENANCE

After Every Ride: Clean dirt and debris away from the post and specifically ensure the seal is clear of any dirt, mud, or debris.

Every 60 Hours Of Ride Time: Loosen the collar to clean old grease and apply a liberal application of new suspension-specific light grease (Slickoleum, SDG Slick Dropper Grease) underneath the collar. Tighten the collar back down and cycle the post 5-10 times to spread the grease.

Every 120 Hours: Inspect internals for worn items and replace them as needed.

Please visit www.sdgcomponents.com for disassembly instructions.

WARRANTY

- **SDG Tellis V2 Dropper Seat Post - Limited Lifetime Warranty**
- SDG Components, Inc. offers a lifetime warranty against defects in materials and workmanship for the lifetime of the product. The limited lifetime warranty requires prior product registration and is only extended to the original owner of the Tellis V2 seatpost. If your Tellis V2 fails due to a manufacturing defect or flaw in materials, SDG Components, Inc. will repair or replace the defective product (at our discretion) without charge. Products that have been modified in any respect will not qualify for warranty. This warranty only applies to material and manufacturing defects, and does not cover damages caused by accidents, improper care, improper installation, negligence, normal wear and tear or the normal breakdown of materials and colors outside of the generally accepted product lifespan. SDG Components, Inc. will repair damaged products not covered by this warranty or sell replacement parts at a largely discounted price under our generous crash replacement program.

TERMS OF WARRANTY

- Shall this product fail under normal conditions while properly maintained per the maintenance schedule, SDG or an authorized agent, at their sole and final discretion, will repair, replace, and or service it.
- This limited warranty does not apply to normal wear and tear, malfunctions that result from improper assembly, failure to follow maintenance, alteration, crash, or any other improper or excessive use.
- **Contact SDG COMPONENTS for ANY warranty questions.**

PLEASE READ!

- **If you have any questions or are unclear on any steps of the installation process, please either contact SDG directly or your local bike shop to ensure correct installation. Failure to do so can cause the post to malfunction, causing serious injury or death.**
- Follow installation instructions closely. Failure to do so can result in post-malfunction causing serious injury or death.
- Ensure the post is inserted to at least the minimum insertion line. If minimum insertion line is exposed, it can cause the post and/or frame to fail.
- Following any crash, please have a certified mechanic inspect your post and bike for damage to ensure the post is still safe to ride.
- Always wear a helmet and ride within your limits.
- The Rider weight limit is 240 lbs.



SDG Components
17451 Nichols Ln. Unit H
Huntington Beach, CA 92647 USA

Contact SDG COMPONENTS for ANY questions or info:
Web: sdgcomponents.com
USA HQ Phone: 1 (714) 375-9333
General Email: info@sdgcomponents.com
Support: support@sdgcomponents.com

USER MANUAL

TELLIS V2

SDG TELLIS V2 DROPPER POST

Congratulations on the purchase of your new SDG Tellis V2 dropper seat post! The Tellis V2 dropper post is designed to offer quick seat height adjustments while on the fly. Please be sure to carefully read the following instruction manual, as failure to install the seat post properly can cause failure resulting in serious injury or death. If you have any questions about installing your Tellis V2 post, please visit your nearest authorized retailer or contact SDG Components directly.

Service videos are available on sdgcomponents.com

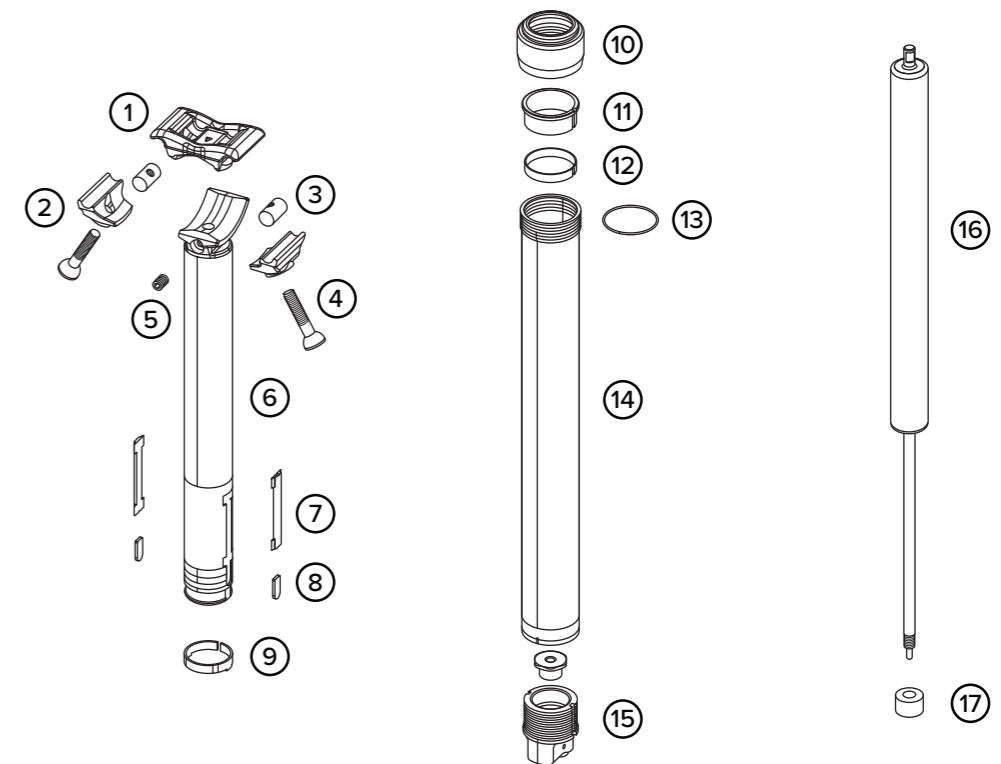
TOOLS REQUIRED

- 3/4/5mm Hex Wrenches
- Torque Wrench
- Cable/Housing Cutter
- Masking Tape
- Grease or Carbon Paste (depends on frame)
- Crimper for Cable End Cap



PARTS LIST

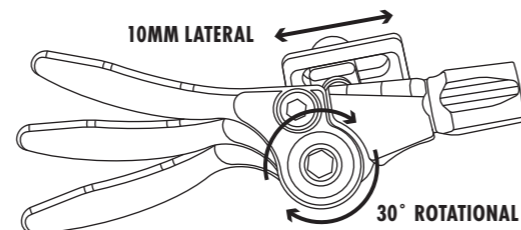
1	Top Clamp	10	Trelleborg Collar Seal
2	Bottom Clamps (2x)	11	IGUS Bushing
3	Clamp Barrel Nuts (2x)	12	Travel Shim
4	Clamp Bolts (2x)	13	O-Ring for Thread
5	Cartridge Lock Screw	14	Lower Seat Post
6	Stanchion	15	Actuator Assembly
7	Keyways (2x)	16	Oil Cartridge
8	Copper Keyway (2x)	17	Bottom Out Bumper
9	Lower Split Bushing		



NEW ADJUSTABLE REMOTE

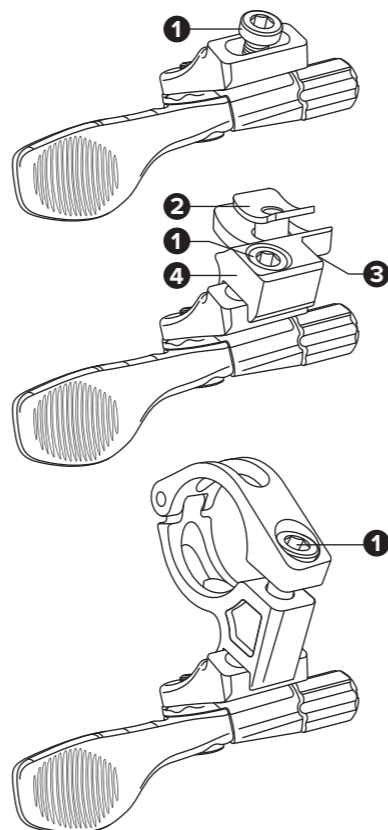
Key Features

- 10mm lateral adjustment.
- 30° rotational adjustment from assembly bolt.
- Adaptors available for various brakes.



MATCH MAKER REMOTE

1. Remove M4 Mounting Bolt (1).
2. Place lever on left Match Maker. Position to what feels comfortable and re-install the M4 Mounting Bolt (1) while being careful of Mounting Nut from sliding out of MM slot. Torque bolt to 3Nm Max. (26.5 lbs-in)
3. The lever can also be rotated by loosening the Assembly Bolt from below. Rotate the lever to the desired position that feels comfortable and torque the bolt to 4Nm Max. (35.4 lbs-in)



ISPEC EV REMOTE

1. Loosen Clamp Bolt (1).
2. Remove ISPEC Mounting Bolt (3) and T-Nut (2).
3. Open Shimano Brake Lever Clamp with 4mm Hex wrench.
4. Install ISPEC EV Adaptor (4) to ISPEC EV Mount (Bottom of brake lever clamp) on Brake by inserting T-Nut and threading ISPEC Mounting Bolt (3) to ISPEC EV Adaptor (4).
5. Adjust remote thumb lever to desired position and tighten ISPEC Mounting Bolt (3) and Clamp Bolt (1) to 4Nm Max. (35.4 lbs-in)

22.2MM HB REMOTE

1. Loosen 22.2mm Bar Clamp Bolt (1).
2. Adjust remote thumb lever to desired position and tighten to 4Nm Max. (35.4 lbs-in)
3. Note: If 22.2mm Bar Clamp Bolt (1) has to be removed, then be careful to hold the Mounting Nut with finger while tightening 22.2mm Bar Clamp Bolt (1).

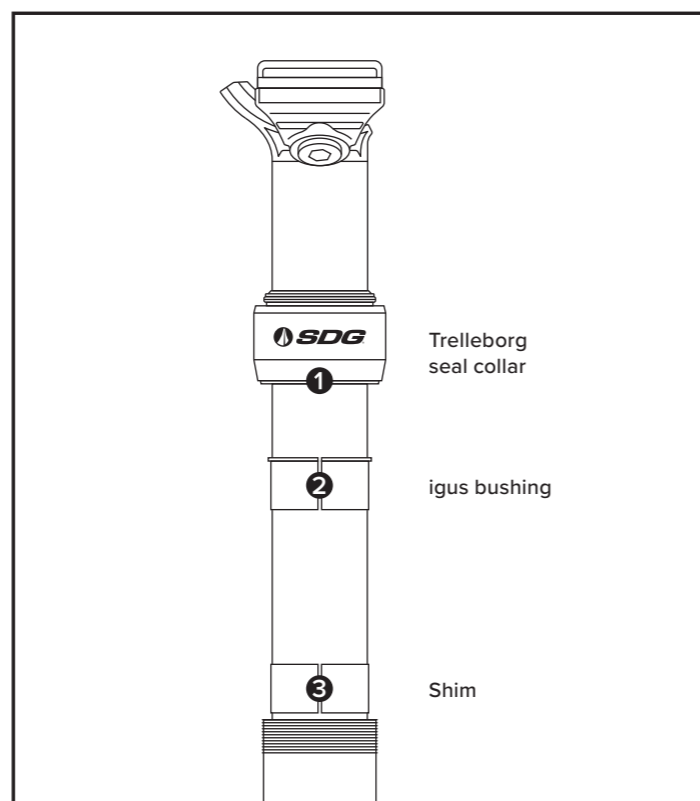
TRAVEL REDUCTION SHIM KIT

1. Compress seat post half way.
2. Loosen Trelleborg seal collar (1).
3. Pull up on seal collar.
4. Raise igus bushing (2) with blade or fingernail.
5. Attach split shim (3) onto stanchion below bushing. (Use only 1 shim)
6. Slide shim into seat post until it's not visible.
7. Slide down igus bushing into seat post.
8. Thread seal collar onto seat post and tighten with strap wrench.

*Note: The split in the shim should be perpendicular to the saddle.

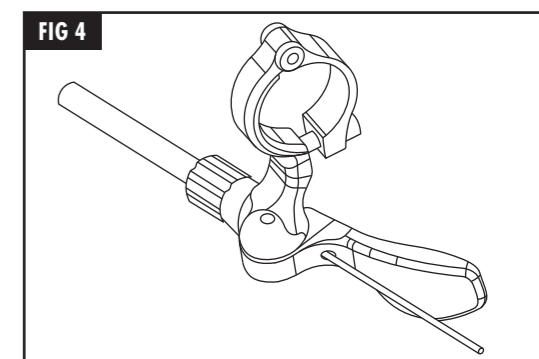
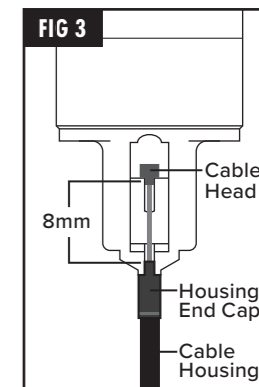
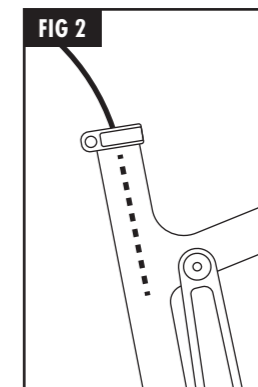
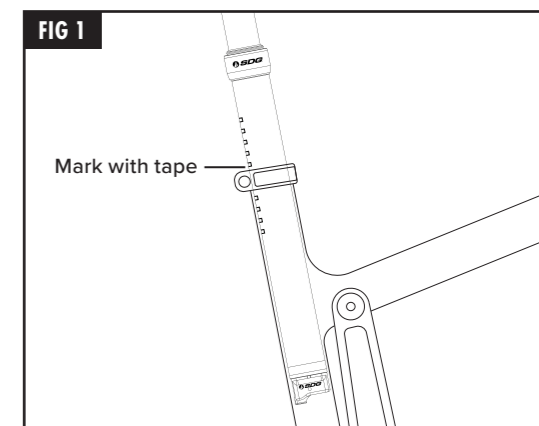
Reduced travel shims are only compatible with Tellis V2 seat post.

SHIMS INCLUDED



INSTALLATION OF THE CABLE & HOUSING

1. Insert the seat post into the bike to determine the depth of the seat post. You must install a saddle at this point to determine saddle height.
2. Mark the seat post tube (FIG 1) with masking tape at the seat post binder and remove the seat post. (Do not remove the tape, as it will be used to install the cable at the end)
3. Measure from marked tape to the bottom of the seat post and write down measurements for use later in the installation process.
4. Route the housing from the lever through the frame and insert the end into the barrel adjuster (with the end cap installed). Rotate the handlebar left and right to ensure the cable is long enough, does not bind, does not stretch, and does not interfere with other cables or parts.
5. Once the length is determined, put a piece of tape on the housing to mark the spot where it sticks out of the seat tube. (FIG 2)
6. From the marked tape on the housing, cut the length (Using measurement from Step 3) below the mark. You will need to feed the housing up and out of the seat tube.
7. Install end cap to cable housing at seat post end. Secure the inner cable head into the actuator coupler and insert the cable into the seat post end of the housing (with the end cap installed). (FIG 3)
8. Install cable thru the housing and thru the barrel adjuster, so the inner cable comes out the back side (FIG 4).
9. Remove all slack in the cables before tightening the cable clamp screw to 1.2Nm (10 lbs-in). Be sure the housing sits flush in the barrel adjuster and actuator before tightening the cable. Trim any excess inner cable and install cable end cap to the trimmed end of the cable. For New Adjustable Remote, the cable clamp bolt needs to be torqued to 3Nm (26.5 lbs-in).
10. Optimum distance from the housing end cap to the cable head is 8mm. Fine-tune with barrel adjuster to correct measurement before inserting the seat post into the frame.
11. Press the lever to stretch the cable and confirm cable housing is seated properly. Remove additional slack by unscrewing the barrel adjuster until the play in the lever is gone.
12. Apply fiber grip onto the seat post and Insert the post into the frame down to the tape while simultaneously pulling on the cable and housing from the opposite end.
13. Secure the remote onto the handlebar to 1.6Nm.



INSTALLATION OF SADDLE

1. Loosen clamp bolts from barrel nuts until they are only engaged by a few threads.
2. Set the saddle down with rails facing up.
3. Install clamps onto the saddle by sliding them between rails and finessing them onto the rails. (FIG 5, 6)
4. Hand-tighten the bolts loosely onto the rails.
5. Slide clamps onto the cradle of the seat post.
6. Hand-tighten the bolts until the clamps are somewhat snug but not too tight.
7. Move the saddle into desired position and angle. (FIG 7)
8. Tighten bolts to 15Nm. (max Torque 17Nm)

