



ENDODONTICS

RESTORATIVE



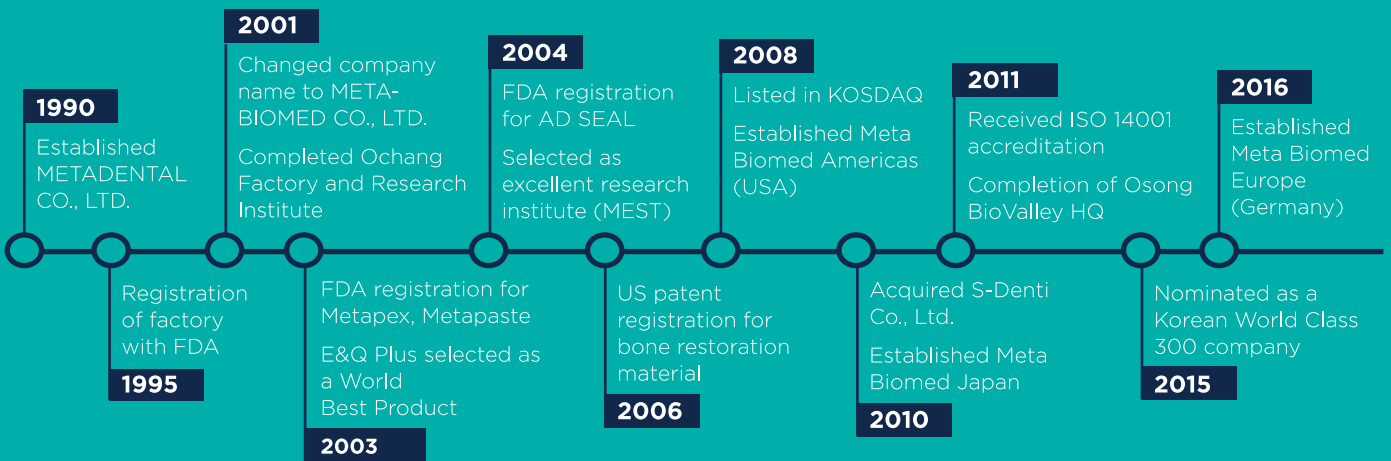
TO VIEW OUR CATALOG

# BEYOND EXPECTATIONS

Doctor Focused, Patient Inspired

Since our beginning in 1990, Meta Biomed has worked with leading clinicians across the globe to develop innovative and best-in-class dental products for dentists and endodontists. Meta Biomed offers their clinicians by delivering trusted and reliable endodontic products and devices for more predictable results and a better patient experience.

## THE HISTORY OF META BIOMED



 @Metabiomed.Endodontics (Global)

 @metabiomedinc (America)

 @metabiomedus

AMERICA: [www.metabiomedamericas.com](http://www.metabiomedamericas.com)  
ONLINE SHOP: [www.metabiomedshop.com](http://www.metabiomedshop.com)

# Quality Delivery Goes Beyond Our Products and Services

The Meta Biomed philosophy extends beyond the delivery of the highest quality dental and endodontic products. We are also committed to enhancing the quality of life for people around the world. We strive for success as a company and are committed to sharing that success with others by sponsoring different charitable organizations throughout the markets we serve.

## ADIZ-NGO

The Association for Development in Zacualpa non-governmental organization works tirelessly in the area of Zacualpa, Guatemala on school development projects and assisting with the local dental and medical needs of the people of Zacualpa. Meta Biomed has committed 10% of the profits from sales at our 2018 tradeshows to ADIZ.



## Heart Surgery for Kids in Vietnam

Working with the Chamjoeun Kwang Sung Culture Center, a Korean church in Ho Chi Minh Vietnam, Meta Biomed is helping to improve the quality of life for poor, disadvantaged, and disabled people in Vietnam. As part of their heart surgery for kids initiative, they find children in need of life-saving heart surgery and provide the funding to make it happen. Meta Biomed has sponsored seven children so far in 2018.

## Compassion International

Compassion International is a child-advocacy ministry that pairs compassionate people with those who are suffering from poverty. The ministry releases children from spiritual, economic, social, and physical poverty so each child can become a responsible and fulfilled adult. Meta Biomed sponsors 13 children per year through Compassion. In addition to the financial commitment, members of the Meta Biomed team also exchange letters, send photos and offer encouragement to the children they sponsor.



## Samaritan's Purse

Samaritan's Purse is a nondenominational evangelical Christian organization providing spiritual and physical aid to hurting people around the world. For over 50 years, Samaritan's Purse has done their utmost to follow Christ's command by going to the aid of the world's poor, sick, and suffering. Meta Biomed has been a donor for Samaritan's Purse for years through the Operation Christmas Child in order to bring joy and to let these God's children know that there is someone who is thinking about them. We will do what we can because we wholeheartedly support Samaritan's Purse's mission.



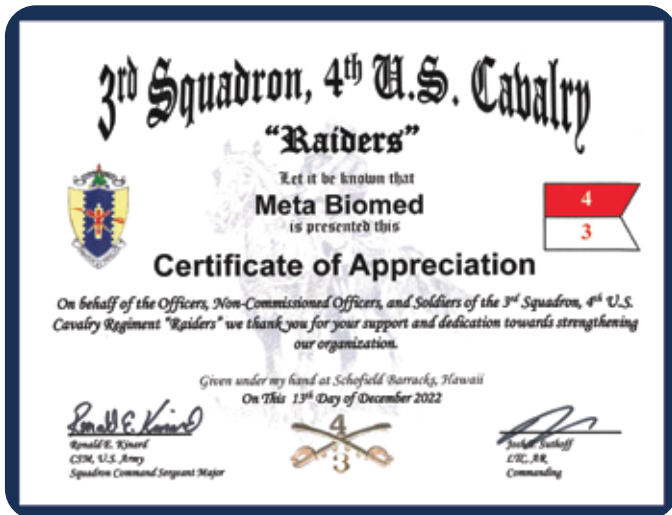
## 6th Squadron, 17th Cavalry "Out Front"

6th Squadron Out Front is the Air Cavalry Reconnaissance Squadron of the Combat Aviation Brigade, 4th Infantry Division, stationed at Fort Carson, Colorado. Meta has donated to the 6th Squadron, 17th Cavalry "Out Front" in order to help and support our US soldiers and their families during this worldwide pandemic. Meta Biomed is always striving to be of service in any ways we can for the men and women who serve our country.



## Stand with Ukraine

There is an extreme need for dental supplies in the Ukraine, as individuals still require care during these unprecedented times. Meta Biomed is committed to helping this cause by supporting dental materials through the Brother's Brother Foundation, a nonprofit organization founded by Dr. Robert Hingson in 1958. Meta Biomed will continue to stand with, pray for, and support the Ukraine.



## 3rd Squadron, 4th Cavalry Regiment

3rd Squadron, 4th Cavalry Regiment is a Reconnaissance Squadron assigned to the 3rd BCT, 25th Infantry Division at Schofield Barracks, Hawaii. Meta Biomed has donated to encourage and support 3rd Squadron, 4th Cavalry Regiment, United States Army. It is an honor to support toward strengthening them.



# Contents

---

## Endodontics

### Root Canal Filling

- 8 Gutta Percha Points
- 9 Absorbent Paper Points

### Bioceramic Root Canal Sealer

- 10 CeraSeal

### Resin Root Canal Sealer

- 11 ADSEAL Plus

### Root Canal Medicaments

- 12 Metapaste Plus
- 13 Metapex Plus

### EDTA

- 14 MD-ChelCream
- 15 MD-Cleanser

### Temporary Cavity Filling

- 16 MD-Temp Plus

## Endodontic Equipment

### Obturation

- 18 EQ-V
- 19 Warm Gutta Percha Obturation  
Tech Guide

### Irrigation

- 20 EQ-S

### Diagnostics Apex Locator

- 21 EQ-PEX

### Instrumentation

- 22 EQ-M

### Handheld Condenser

- 23 EQ Condensers

## Restorative

### Liner

- 25 Biner LC

### Etchant

- 26 Meta Etchant

### Bonding

- 27 Meta P&Bond

### Permanent Cement

- 28 Metacem

### Nano Hybrid Composite

- 29 Ezfil
- 30 Nexcomp
- 31 Nexcomp Flow

### Temporary Cement

- 32 NETC

## Product Listings

- 33 Product List with Item Codes

# ENDODONTICS

[en-doh-don-tiks]

**noun:**

the branch of dentistry dealing with the cause, diagnosis, prevention, and treatment of diseases of the dental pulp, usually by removal of the nerve and other tissue of the pulp cavity and its replacement with suitable filling material; pulp canal therapy; root canal therapy.

“

*Aurum Blue files allow me to work efficiently and safely at the same time. Their cross-sectional design combined with the NiTi controlled memory alloy are the perfect combination for providing cutting efficiency, great flexibility and outstanding fatigue resistance.*



— Jenner Argueta D.D.S., – M.Sc.  
Guatemalan Endodontics Academy President

”



# Gutta Percha Points

.02/.04/.06/Aurum Pro (F1~F5, F1/F3) Gutta Percha Points

## Advantages

- 4-year shelf life
- Stiff and flexible
- Excellent radiopacity
- Various sizes, tapers, packages
- **Non-standard**  
XF, FF, MF, F, FM, M, ML, L, XL
- **Aurum Pro**  
F1, F2, F3, F4, F5, F1/F3
- **Pro Sizes**  
F1, F2, F3, F4, F5, F1/F3

## Specifications

### Standard

Size	Taper (Quantity)		
	02 (120/60)	04 (60)	06 (60)
10	■		
15	■	■	■
20	■	■	■
25	■	■	■
30	■	■	■
35	■	■	■
40	■	■	■
45	■	■	■
50	■	■	■
55	■	■	■
60	■	■	■
70	■	■	■
80	■	■	■
90	■		
100	■		
110	■		
120	■		
130	■		
140	■		

\*.02 taper sizes 90-140 must order MOQ \*





# Absorbent Paper Points

.02/.04/.06/Aurum Pro (F1~F5, F1/F3) Paper Points

## Advantages

- Highly absorbent
- Sterilized individual packages
- Various sizes and packages available
- 5yrs Shelf life
- **Non-standard**  
XX-Fine, X-Fine, Fine, Medium, Coarse, X-Coarse
- **Aurum Pro**  
F1, F2, F3, F4, F5, F1/F3
- **Pro Sizes**  
F1, F2, F3, F4, F5, F1/F3

## Specifications

- **Standard**

Size	Taper (Quantity)		
	02 (200/100)	04 (60)	06 (60)
10	■		
15	■	■	■
20	■	■	■
25	■	■	■
30	■	■	■
35	■	■	■
40	■	■	■
45	■	■	■
50	■	■	■
55	■	■	■
60	■	■	■
70	■	■	■
80	■	■	■
90	■		
100	■		
110	■		
120	■		
130	■		
140	■		

\*.02 taper sizes 90-140 must order MOQ \*



*Available only in Latin America*

## CeraSeal Bioceramic Root Canal Sealer

### Advantages

- Anti-microbial
- Optimal biocompatibility
- Excellent sealing ability
- Unique stability

### Areas of application

- Permanent sealing of the root canal

### Clinical Cases



Before



After



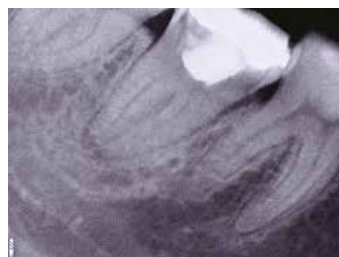
Before



After



Before



After



Before



After

### Components

**CeraSeal** 2g Pre-mixed syringe × 1ea / Intra canal tips × 10EA

### Physical Properties

**Setting Time** 3,5 h

**pH** 12 <

**Radiopacity** 8mm <



## ADSEAL Plus Resin Based Sealer

### Advantages

- Excellent biocompatibility
- Easy-to-mix paste
- Hermetic sealing ability
- Nonstaining to the teeth
- Insoluble in tissue fluids
- Good radiopacity
- Film thickness: 3.3

### Applications

- Permanent root canal sealing
- Thermal obturation

### Components

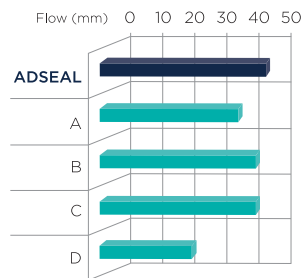
- 13.5g dual syringe
  - Base 9g (Epoxy resin, Calcium phosphate)
  - Catalyst 4.5g (Amines, Bismuth subcarbonate)
- Spatula
- Mixing Plate

### Composition

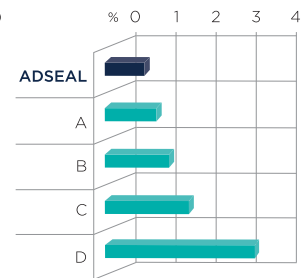
- Base-epoxy oligomer resin, Ethylene glycol salicylate, Bismuth subcarbonate
- Catalyst-Poly butanediol aminobenzoate, Calcium Phosphate, Bismuth subcarbonate

### Physical and Chemical Properties

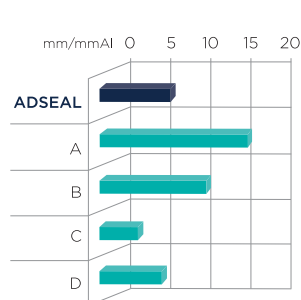
#### Flow



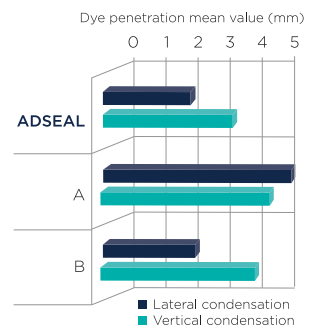
#### Solubility



#### Radiopacity



#### Material Properties



- Working time: 35 Minutes at 23 C (73 F)
- Setting time: 45 Minutes at 37 C (99 F)

### Shelf Life

- Two years from the production date



## Metapaste Plus Calcium Hydroxide with Barium Sulfate

### Advantages

- **Faster Dissociation**  
Faster medicinal effect & easily removed
- **PPG Free**  
Reducing Post-op sensitivity, ensuring more stable treatment
- **Antibacterial with high pH: 12.15 (1day) / 12.35 (14day)**  
Increasing success probability of root canal treatment due to the high antibacterial effect
- **Improved flowability: 19-20mm (ISO 6876:2012)**  
Convenient and accurate placement to the apex enhanced
- **Premixed Syringe type**  
Quick and Easy treatment with minimal waste & clean up

### Applications

- Weeping canal
- Formation of a hard tissue barrier (Apexification)
- Temporary root canal filling
- Internal & external root resorption

### Components

- 2g syringe 1EA, Disposable Tips 20EA

### Composition

- Calcium Hydroxide, Barium Sulfate, Purified Water

### Shelf Life

- Two years from the production date



## Metapex Plus Calcium Hydroxide with Iodoform

### Advantages

- **Antibacterial with high pH: 12.00 (1day) / 12.4 (14day)**  
Increasing success probability of root canal treatment due to the high antibacterial effect
- **Premixed syringe type**  
Quick and Easy treatment with minimal waste & clean up
- **Improved flowability: 19-21mm (ISO 6876:2012)**  
Convenient and accurate placement to the apex enhanced
- **High radiopacity: 5.4 Almm**  
Accurate diagnosis available

### Applications

- Weeping canal
- Formation of a hard tissue barrier (Apexification)
- Root canal filling for deciduous teeth
- Internal & external root resorption

### Components

- 2.2g syringe 1EA, Disposable Tips 20EA

### Composition

- Calcium Hydroxide, Iodo- form, Silicon oil

### Shelf Life

- Two years from the production date



# MD-ChelCream

## EDTA 19% Cream for Root Canal Cleaning and Preparation

### Advantages

- Removal of inorganic substances by chelation (EDTA-Ca 2+)
- Easier filing with lubricating action
- Produces the cleanest canal wall after smear layer removal

### Applications

- Root canal preparation with files and reamers
- Presence of calcifications in the canal
- Narrow canals in posterior teeth
- Smear layer removal

### Components

- MD-ChelCream 7g(5.4mL)×2
- Disposable tips

### Composition

- EDTA, PEG

### Shelf Life

- Two years from the production date



## MD-Cleanser™ EDTA 17% Solution

### Advantages

- Removal of inorganic substances by chelation (EDTA-Ca 2+)
- Easier instrumentation by softening dentin canal wall
- Produces the cleanest dentinal walls after smear layer removal

### Applications

- Presence of calcification in the canal
- Narrow canals on posterior teeth
- Smear layer removal
- Root canal cleaning

### Components

- MD-Cleanser: 100 mL
- 1cc syringe
- Disposable tips

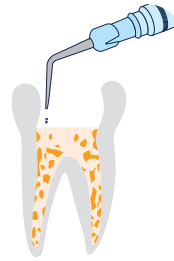
### Composition

- EDTA, Water, Ammonia water

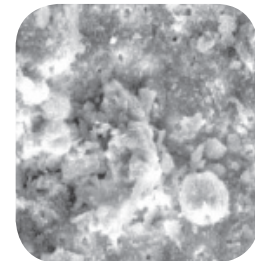
### Shelf Life

- Two years from the production date

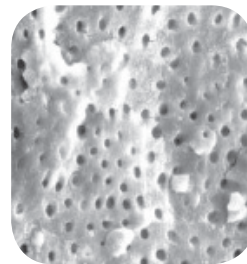
### Clinical Case



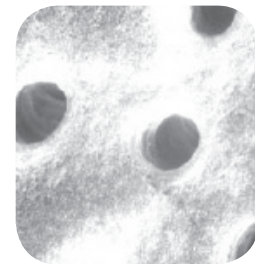
Application method



After root canal preparation



After MD-Cleanser application (x1000)



After MD-Cleanser application (x7000)



## MD-Temp Plus Hydraulic Temporary Restorative

### Advantages

- Easy application and removal
- Hermetic seal of the cavity
- Excellent stability when set
- Proper crush strength

### Applications

- Temporary cavity filling

### Components

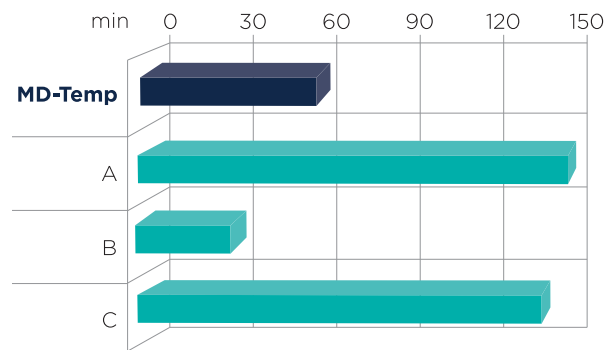
- White or pink paste in a jar(40g)

### Composition

- Co-polymer
- Zinc oxide
- Calcium sulfate

### Physical and Chemical Properties

#### Setting Time



#### Shelf Life

- Three years from the production date



# ENDODONTIC EQUIPMENT

[en-doh-don-tik] [ih-kwip-muh-nt]

**noun:**

medical devices used for the diagnosis and treatment of diseases of the dental pulp.

“

*I've tried them all and the Meta Biomed iRoot stands out as the most user-friendly, reliable, and accurate apex locator made today. It is indispensable in my hands. And I love the E&Q Master obturator. Cordless. Streamlined. Reliable. No bells and whistles. The E&Q Master makes my warm vertical obturation simple and efficient.*



”

— Rich Mounce, DDS

### Unique Structure of EQ-V Fill



## EQ-V Warm Gutta Percha Obturation

### Advantages

- Chemically resistant & ergonomically designed body (remain intact after 1 week of immersion in cavicide)
- Durable & flexible refillable cartridge
- Easy maintenance due to unique structure
- Outstanding heating performance
- Continuous power supply by swappable batteries

### Specifications

EQ-V Fill		
Heating Time	35 seconds	
Setting Temperature	160 or 200°C	
EQ-V Pack		
Heating Time	in a second	
Setting Temperature	180 or 230°C	
Continuous Operation	4 seconds	
Battery		
Li-ion	3.6 V / 1900mAh	
Charging Time	3 hours	
AC/DC Adapter		
Input	100-240V-	
Output	9.0 V d.c. / 2.0 A	
Operating time		
Fill	Continuous for 1 hour	
Pack	Continuous for 1.5 hours	

### Contents

Contents	Fill Unit	Pack Unit	Battery	Single Charger	Dual Charger	Packtip (50/.04, 60/.05) (2ea/1pk)	Fill Needle (25G) (6ea/1pk)	Multi Tool	Cleaning Brush	AC/DC Adapter	Power Cord	GP bar (100pcs/bottle)	Seal Driver	Plunger Seal (2ea/1pk)
<b>Type</b>														
<b>Full Kit (Fill+Pack)</b>	■	■	■ (3ea)		■	■	■	■	■	■	■	■	■	■
<b>Fill Kit</b>	■		■ (2ea)	■			■	■	■	■	■	■	■	■
<b>Pack Kit</b>		■	■ (2ea)	■		■				■	■			

# Warm Gutta Percha Obturation Tech Guide

## Downpack



**1.** Test the master cone that corresponds to your final file size. Check master cone for apical tug back. Seat master cone with cement. Remove excess gutta percha at the orifice by activating the heat with the pack tip.



**2.** Select a pack tip/ heat plugger that fits 4-6mm short of your working length. Set stop accordingly.



**3.** Thermo plasticize the master cone by activating the heat on the pack tip, condensing apically 4-6mm short of your working length or to desired stop - approx. 3 seconds.



**4.** Continue to apply light apical pressure with no heat for approx. 10 seconds. To remove, activate the heat on pack tip approx. 1 second. This creates your apical seal with removal of the mid root and coronal aspects of the master cone.

## Backfill



**5.** Insert your backfill gun needle, wait approx. 5 seconds, prior to expressing gutta percha.



**6.** Slowly backfill root canal, allowing for the needle to be hydraulically pushed coronally, stopping at the orifice.



**7.** Vertically condense your coronal seal at the orifice with the desired hand plugger.



**8.** Now, the entire root canal is fully obturated.

## Clinical Cases



Mandibular right 1st molar, mesial 4 orifices



Mandibular left 1st molar, 'S' curved distolingual canal



Mandibular left 2nd molar, C-shape canal



## EQ-S Sonic Irrigation

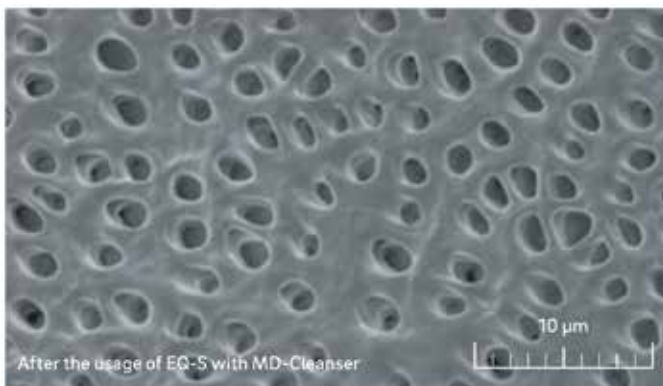
### Advantages

- Less pressure to the apical foramen
- Easier access to curved canals
- Perfect interaction with irrigant
- Color coded

### Rotational & Vertical Movement

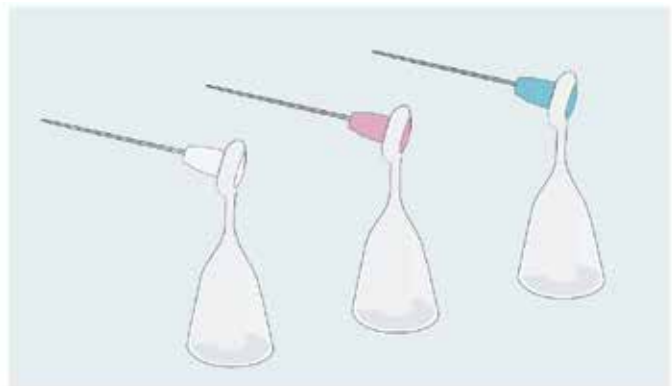
- Indentation along the tip, combined with counter clockwise motion, ensures 3D Active Flow™. The unique shape and design of the EQ-S tip create stronger force, which enhances flow in small canals.

### Powerful Cleaning



Specifications	
<b>Dimensions</b>	24 mm ' 25 mm ' 183 mm (Including tip)
<b>Weight</b>	43g
<b>Battery</b>	1.5 V Alkaline (AA) - Not included in the Kit
<b>Operation Time</b>	9 hours (continuous operation)

Contents		
Item Code	Description	Remark
026-210	EQ-S Gray Kit	Tips and Protective Sleeves included
026-220	EQ-S Pink Kit	Tips and Protective Sleeves included
126-230	EQ-S Tip 15/02	30ea/1set (Color: White)
126-240	EQ-S Tip 25/02	30ea/1set (Color: Red)
126-250	EQ-S Tip 35/02	30ea/1set (Color: Green)
126-260	Protective sleeve	100ea/1set





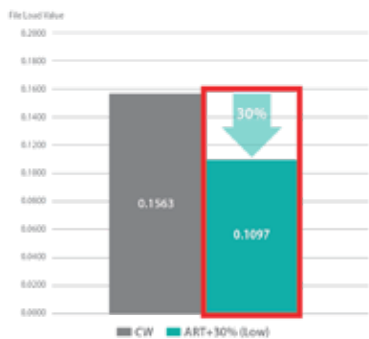
*Available only in Latin America,  
excluding Mexico and Chile*

## EQ-M Cordless Endodontic Motor

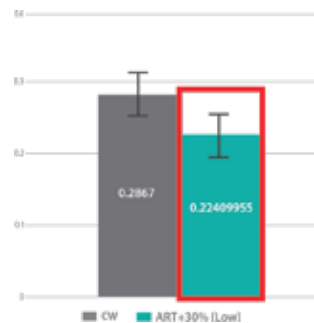
### Advantages

- Patented ART Motion (Alternative Rotation Technique) that increases file fracture resistance by 25% and more

#### Endo File Load



#### Screw-in Force(N)



Source: Kyungpook National University School of Dentistry

- 360-degree rotation Contra Angle
- User-friendly design
- Global standard Swiss-made motor
- Extra batteries(2EA) of high-quality
- Light Guide with connecting EQ-PEX

### Specifications

- Electric Shock Protection**  
Class 1 Equipment - Internal power supply type /Type BF Applied (contra angle)
- Waterproof Rating**  
IPX0
- Battery**  
Lithium-ion battery
- Motor Handpiece**  
Speed Range: 100-1,000RPM  
Torque Range: 1.0~4.0Ncm  
Rated Input: 3.7 V d.c. / 800mAh (Lithium-ion battery)  
Dimensions: 202 X 28 X 28mm (including battery,contra angle)  
Weight: 130g (including battery,contra angle)  
Operation Mode: Continuous operation
- AC/DC Adapter**  
Input Voltage: 100-240V~, 50-60Hz  
Output Voltage: 9.0 V d.c.  
Output Current: 2.0 A



*Available only in Latin America,  
excluding Mexico and Chile*

## EQ-PEX Electronic Apex Locator

### Advantages

- **Auto Calibration**  
Provides accurate measurements regardless of environmental factors
- **'Light Guide' for safe treatment**  
3 different color lights (Blue-Yellow-Red) indicate the real-time location of the file in the root canal, and allow intuitive verification of measurement and accurate diagnosis during the treatment. (It turns on the top of the file holder B, and on the main button of the EQ-M when interlocked with EQ-M)
- **High-quality battery**  
6 hours of continuous use guaranteed and fully charge in 150 minutes
- **10 year proven reliable technology**  
High performance device mirroring the I-Root

### Specifications

- **Protection from Electric Shock**  
Class 1 Equipment - Internal power supply type /Type BF Applied
- **Degree of Protection(IEC60529)**  
IPX0
- **Battery**  
Lithium-ion battery
- **Applied Part**  
Lip hook, File holder A, File holder B, File holder gender
- **Mainbody**  
Rated input: 3.6V / 1900mAh (Lithium-ion battery)  
Dimensions: 90mm x 75mm x74mm  
Weight: 184g (including battery)  
Operation Mode: Continuous operation  
Accuracy:  $\pm 0.5\text{mm}$
- **AC/DC Adapter**  
Input Voltage: 100-240V~, 50-60Hz  
Output Voltage: 9.0 V d.c.  
Output Current: 2.0 A



## EQ Condensers

The lightweight EQ Condensers, with their flexible NiTi tips can be used for warm and cold obturation and backfilling the canal.

### Advantages

- Flexible NiTi tip
- Flat end & smooth edge
- Laser marking (5mm on the tip)
- Anti-crack & rotation prevention
- Color anodizing
- Excellent chemical resistance
- Lightweight

### Sizes

- 40 NiTi/80 SS
  - 50 NiTi/100 SS
  - 60 NiTi/120 SS
- (Available individually and in set of 3)

# RESTORATIVE

[ri-stawr-uh-tiv, -stohr-]

**noun:**

the branch of dentistry that deals with the restoration of diseased, injured, or abnormal teeth to normal function, as by crowns.

“  
*I have been using Meta Biomed products in my practice for a number of years and they are always easy to use. Meta Biomed provides quality products that make treatment on my part easier and more predictable.*  
”

— Gregori M. Kurtzman, DDS







*FDA 510(k) Pending*

*Available only in Latin America*

## Biner LC Light-curing Type Cavity Liner

### Advantages

- Excellent biocompatibility with dentin and pulp
- Light-curing type cavity liner, cures extremely hard
- Chemically bonds to adhesives and composites
- Insoluble in water and oral fluids
- Radiopaque
- Flow-on-demand handling and easy dispensing
- Heating barrier

### Applications

- Protect pulp of the tooth
- Lining under all filling materials
- Protection when applying the total etch technique

### Components

- Biner LC 2g X 2 syringes
- 10ea disposable tips

### Composition

- Hydroxy calcium phosphate, UDMA, Photoinitiator
- Barium aluminum silicate

### Physical Properties

- **Flexural strength**  
More than 100 MPa
- **Sensitivity to ambient light**  
Homogeneous for 60s
- **Linear expansion**  
2~3 %
- **Radiopacity**  
Yes
- **Depth of cure (40 sec.)**  
2mm

### Shelf Life

- Three years from the production date



## Meta Etchant 37% Phosphoric Acid

### Advantages

- Polymer thickened gel
- Easy dispensing and application
- No residue, rinse out completely
- Thixotropic characteristics(not runny)

### Applications

- Conditioning of surface for dentin and enamel with composite and inlay onlay

### Components

- 3g X 3 syringes, 20 tips

### Composition

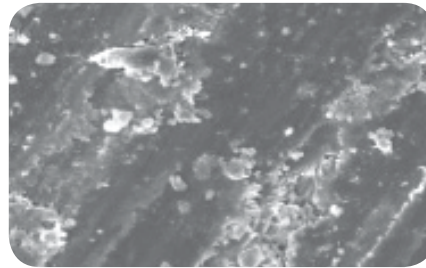
- Phosphoric acid, H<sub>2</sub>O, Xanthan gum

### Shelf Life

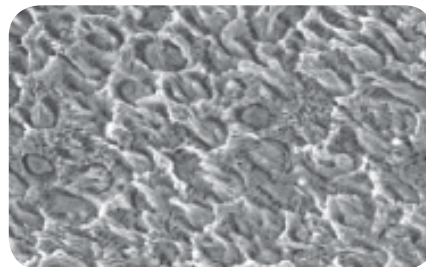
- Two years from the production date

### Clinical Case

#### ▪ Enamel SEM



Before Meta Etchant application(x2000)



After Meta Etchant application(x2000)



## Meta P&Bond 5th Generation Bonding System

### Advantages

- Superior bonding strength
- 5th generations adhesive
- One-step priming and bonding
- Ethanol base adhesive
- Wet bonding type

### Applications

- Bonding for direct composite
- Bonding for porcelain, composite, metal repair, set amalgam, post
- Bonding for porcelain veneer
- Bonding for amalgam and indirect bonding procedures with Metacem adhesive resin cement

### Components

- Meta P&Bond 5g
- Micro brush 10EA

### Composition

- Bis-GMA, PMGDM, 2-Hydroxyethylmethacrylate, Ethyl alcohol

### Physical Properties

- Dentin shear bonding strength 10.75MPa
- Enamel shear bonding strength 30.76MPa

### Shelf Life

- Two years from the production date



## Metacem Dual-Cured Resin Cement

### Advantages

- Easy-to-use for cosmetic indirect restorations
- Provides high resistance to compressive force
- Provides a dual-cure for highly shaded, thick or opaque cementation
- 5 shades correspond with shade guide A1, A3, B2, TL (Translucent white), OP (Opaque)

### Applications

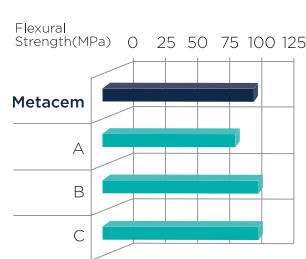
- Crowns & bridges (ceramic, composite, porcelain)
- Inlay/onlay cementation
- Bonding for porcelain veneers

### Components

- **Metacem set**
  - 2 Dual syringe (A3, Translucent white shade, 9g/ea)
  - P&Bond 5g
  - Etchant 3g
  - 20 Mixing tips
  - 20 Etchant disposable tips
  - Spatula
  - Mixing pad paper
  - 10 Adhesive brushes
- **Metacem Refill**
  - 1 Dual syringe (A1, A3, B2, Translucent white, Opaque, 9g/ea)

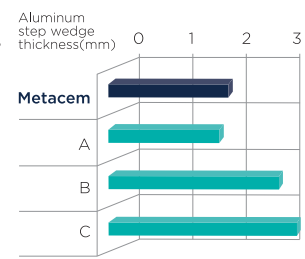
### Physical and Chemical Properties

#### Flexural Strength



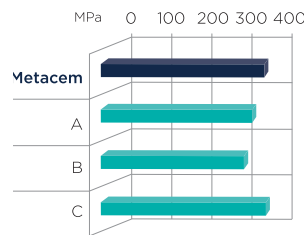
Working time: 2 min  
 Setting time: 5 min  
 Flexural strength: 99 MPa  
 Radiopacity: 2.33mm Al/mm

#### Radiopacity



Film thickness: <math><21\mu\text{m}</math>  
 Water absorption:  $29.3\ \mu\text{g}/\text{mm}^3$   
 Water solubility:  $2.3\ \mu\text{g}/\text{mm}^3$

#### Compressive Strength



### Shelf Life

- Two years from the production date



## Ezfil Nano Hybrid Composite Resin

### Advantages

- Enhancing both strength and naturalness of restoration
- Working for both anterior and posterior teeth
- Low Shrinkage
- Easy to manipulate before placement

### Areas of application

- Permanent sealing of the root canal

### Clinical cases

Courtesy of Dr.Jenner O. Argueta(Guatemala)

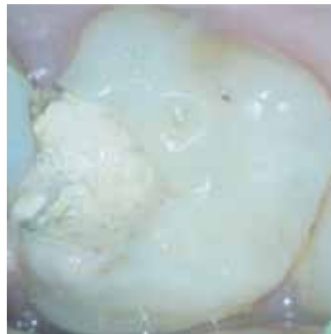


Before



After (Class I)

Courtesy of Dr.Johnny Onori (Spain)



Before



After (Class II)

### Composition

#### Ezfil Kit

4g Syringe each of : A1, A2, A3, A3.5, B1, B2, OP  
Meta P&Bond 1 bottle × 5g (with Microbrush 10ea)  
Meta Etchant 1 syringe × 3g (with Disposable Tips 20ea)

#### Ezfil Refill

4g Syringe 1ea

### Shelf Life

- Three years from the date of manufacture



## Nexcomp Nano-Hybrid Composite Resin

### Advantages

- Low 1.6% shrinkage for superior marginal integrity, various shades
- Filled with 40 nano-sized filler for excellent polishability
- Optimal handling - excellent sculptability for restoring natural shape and function
- Non-slumping, non-sticky

### Applications

- Class I, II, III, IV, V restorations
- Diastema closures
- Direct veneers
- Composite and porcelain repairs

### Components

- Nexcomp Kit
  - 4g x 7 Syringe (A1, A2, A3, A3.5, B2, A2E, B2E)
  - Meta P&Bond 5g
  - Meta Etchant 3g
- Nexcomp Refill
  - 4g x 1 Syringe (A1, A2, A3, A3.5, B1, B2, B3, WT)

### Composition

- Bis-GMA, UDMA, Bis-EMA
- Barium aluminum boro silicate

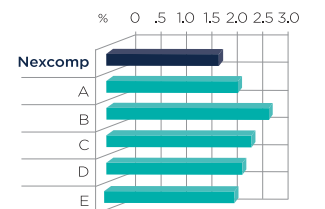
### Shelf Life

- Three years from the production date

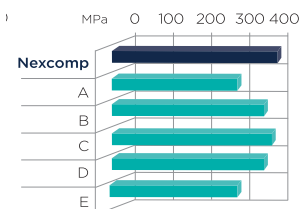
Nexcomp	
<b>Principle organic component of polymer base</b>	Bis-GMA, Bis-EMA, Urethane dimethacrylate, Triethylene glycol dimethacrylate
<b>Range of dimensions of inorganic filler particles</b>	0.04 to 0.7 $\mu\text{m}$
<b>Percentage by volume of total inorganic fillers</b>	54 vol.%
<b>Recommended external energy source</b>	Specification required of light curing device: usual dental halogen/LED lamps with light intensity of more than 400mW/cm <sup>2</sup> and wavelength range of 430-480nm

### Physical and Chemical Properties

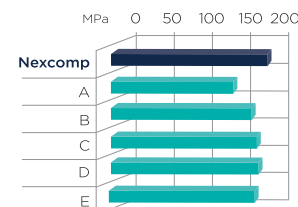
#### ▪ Polymerization Shrinkage Rate



#### ▪ Compressive Strength



#### ▪ Flexural Strength





## Nexcomp Flow Nano-Hybrid Flowable Composite Resin

	Nexcomp Flow
<b>Principle organic component of polymer base</b>	Bis-GMA, Bis-EMA, Urethane dimethacrylate, Triethylene glycol dimethacrylate
<b>Range of dimensions of inorganic filler particles</b>	0.04 to 0.7 $\mu\text{m}$
<b>Percentage by volume of total inorganic fillers</b>	37 vol.%
<b>Recommended external energy source</b>	Specification required of light curing device: usual dental halogen/LED lamps with light intensity of more than 400mV/cm <sup>2</sup> and wavelength range of 430-480nm

### Components

- Nexcomp Flow set
  - 2g X 5 syringes (A2, A3, A3.5, B2, B3)
  - 20ea disposable tips
- Nexcomp Flow Refill
  - 2g X 2 syringes (A1, A2, A3, A3.5, B1, B2, B3, WT, TL)
  - 10ea disposable tips

### Composition

- Bis-GMA, UDMA, Bis-EMA TMPTMA
- Barium aluminum boro silicate

### Advantages

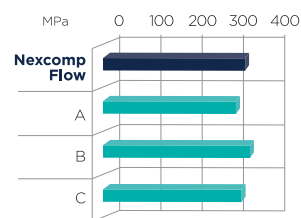
- Low viscosity, light-cured, radiopaque flowable composite resin for minimally invasive cavity preparation.
  - Filled with 40 nano-sized filler for excellent polishability
  - Flow-on-demand handling
  - Excellent radiopacity
  - Available in 14 shades including opaque and translucent
  - No slumping and running

### Applications

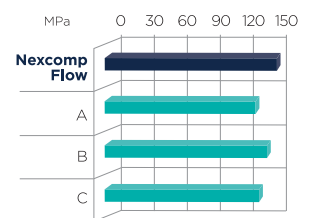
- Restoration of invasive cavity
- Pits and fissure sealing
- Base and liner for direct restoration
- Repair acrylic temporary materials
- Repair of esthetic indirect restorations

### Physical and Chemical Properties

#### Compressive Strength



#### Flexural Strength



### Shelf Life

- Three years from the production date



*FDA 510(k) Pending*

*Available only in Latin America*

## NETC & NETC Easy Non-Eugenol Temporary Cement

### Advantages

- Paste-paste tube type
- Working time: 1.5 min
- Setting time: 6 min
- Especially suitable for patients who are sensitive to eugenol

### Applications

- Temporary cementation of crowns & bridges

### Composition

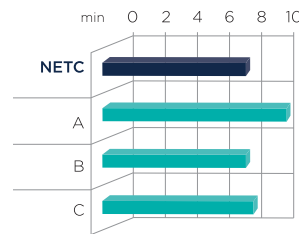
- Base-Zinc Oxide, Mineral oil
- Catalyst-Rosin, Nonanoic acid

### Components

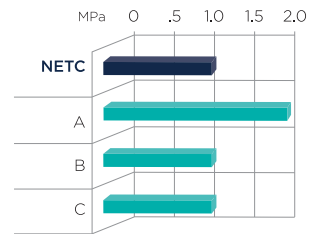
- Tube Type: Base 40g, Catalyst 14g, Mixing Pad
- Dual Syringe Type: 11g x 2ea, Mixing tip x 2ea, Cap x 2ea, Mixing Pad

### Physical and Chemical Properties

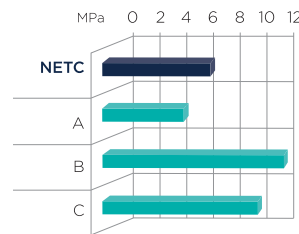
#### Setting Time



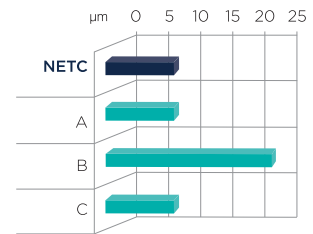
#### Adhesive Strength



#### Compression Strength



#### Film Thickness



NETC complies with the requirements of ISO 3107 (Type I, Class 2B)

### Shelf Life

- Two years from the production date



# Ordering Information

If you are interested in our products, feel free to contact us via [america@metabiomed-inc.com](mailto:america@metabiomed-inc.com).

\*\* Please reference the following item codes to provide to our sales team as item codes are required to place orders.

## GUTTA PERCHA

Item Code	GP 0.2T & no length marked/P71
111530-10	GP 0.2T P71.10
111530-15	GP 0.2T P71.15
111530-20	GP 0.2T P71.20
111530-25	GP 0.2T P71.25
111530-30	GP 0.2T P71.30
111530-35	GP 0.2T P71.35
111530-40	GP 0.2T P71.40
111530-45	GP 0.2T P71.45
111530-50	GP 0.2T P71.50
111530-55	GP 0.2T P71.55
111530-60	GP 0.2T P71.60
111530-70	GP 0.2T P71.70
111530-80	GP 0.2T P71.80
111530-90	GP 0.2T P71.90
111530-100	GP 0.2T P71.100
111530-110	GP 0.2T P71.110
111530-91	GP 0.2T P71.90-140
111530-14	GP 0.2T ASSORTED (15/40)
111530-48	GP 0.2T ASSORTED (45/80)
151530-XF	GP 0.2T P71.XF
151530-F	GP 0.2T P71.F
151530-FF	GP 0.2T P71.FF
151530-FM	GP 0.2T P71.FM
151530-M	GP 0.2T P71.M
151530-MF	GP 0.2T P71.MF

Item Code	GP 0.2T & length marked/P71
112520-10	GP 0.2T LM P71.10
112520-15	GP 0.2T LM P71.15
112520-20	GP 0.2T LM P71.20
112520-25	GP 0.2T LM P71.25
112520-30	GP 0.2T LM P71.30
112520-35	GP 0.2T LM P71.35
112520-40	GP 0.2T LM P71.40
112520-45	GP 0.2T LM P71.45
112520-50	GP 0.2T LM P71.50
112520-55	GP 0.2T LM P71.55
112520-60	GP 0.2T LM P71.60
112520-70	GP 0.2T LM P71.70
112520-80	GP 0.2T LM P71.80
112520-90	GP 0.2T LM P71.90
112520-100	GP 0.2T LM P71.100
112520-110	GP 0.2T LM P71.110
112520-120	GP 0.2T LM P71.120
112520-130	GP 0.2T LM P71.130
112520-140	GP 0.2T LM P71.140
112520-14	GP 0.2T LM P71. (15/40)

112520-48	GP 0.2T LM P71. (45/80)
112510-90	GP 0.2T LM P71.90
112510-100	GP 0.2T LM P71.100
112510-110	GP 0.2T LM P71.110
112510-120	GP 0.2T LM P71.120
112510-130	GP 0.2T LM P71.130
112510-140	GP 0.2T LM P71.140
152520-F	GP 0.2T LM P.71 F
152520-FF	GP 0.2T LM P71.FF
152520-FM	GP 0.2T LM P71.FM
152520-M	GP 0.2T LM P71.M
152520-MF	GP 0.2T LM P71.MF
152520-ML	GP 0.2T LM P71.ML
152520-XF	GP 0.2T LM P71.XF

Item Code	GP 0.4T & no length marked/P71
121510-15	GP 0.4T P71.15
121510-20	GP 0.4T P71.20
121510-25	GP 0.4T P71.25
121510-30	GP 0.4T P71.30
121510-35	GP 0.4T P71.35
121510-40	GP 0.4T P71.40
121510-45	GP 0.4T P71.45
121510-90	GP 0.4T P71.90
121510-14	GP 0.4T P71.(15/40)

Item Code	GP 0.4T & length marked/P71
122510-15	GP 0.4T LM P71.15
122510-20	GP 0.4T LM P71.20
122510-25	GP 0.4T LM P71.25
122510-30	GP 0.4T LM P71.30
122510-35	GP 0.4T LM P71.35
122510-40	GP 0.4T LM P71.40
122510-45	GP 0.4T LM P71.45
122510-50	GP 0.4T LM P71.50
122510-55	GP 0.4T LM P71.55
122510-60	GP 0.4T LM P71.60
122510-70	GP 0.4T LM P71.70
122510-80	GP 0.4T LM P71.80
122510-90	GP 0.4T LM P71.90
122510-14	GP 0.4T LM P71. (15/40)
122510-48	GP 0.4T LM P71.(45/80)

Item Code	GP 0.6T & no length marked/P71
131510-15	GP 0.6T P71.15
131510-20	GP 0.6T P71.20
131510-25	GP 0.6T P71.25
131510-30	GP 0.6T P71.30
131510-35	GP 0.6T P71.35
131510-40	GP 0.6T P71.40
131510-45	GP 0.6T P71.45
131510-14	GP 0.6T P71.(15/40)

Item Code	GP 0.6T & length marked/P71
132510-15	GP 0.6T LM P71.15
132510-20	GP 0.6T LM P71.20
132510-25	GP 0.6T LM P71.25
132510-30	GP 0.6T LM P71.30
132510-35	GP 0.6T LM P71.35
132510-40	GP 0.6T LM P71.40
132510-45	GP 0.6T LM P71.45
132510-50	GP 0.6T LM P71.50
132510-55	GP 0.6T LM P71.55
132510-60	GP 0.6T LM P71.60
132510-70	GP 0.6T LM P71.70
132510-80	GP 0.6T LM P71.80
132510-14	GP 0.6T LM P71.(15/40)
132510-48	GP 0.6T LM P71.(45/80)
Item Code	GP - Protaper/P71
162510-F1	GP PT P71.F1
162510-F2	GP PT P71.F2
162510-F3	GP PT P71.F3
162510-ASST	GP PT P71.(F1/F3)

## PAPER POINTS

Item Code	PP 0.2T & no length marked/P71
211550-15	PP 0.2T P71.15
211550-20	PP 0.2T P71.20
211550-25	PP 0.2T P71.25
211550-30	PP 0.2T P71.30
211550-35	PP 0.2T P71.35
211550-40	PP 0.2T P71.40
211550-45	PP 0.2T P71.45
211550-50	PP 0.2T P71.50
211550-55	PP 0.2T P71.55
211550-60	PP 0.2T P71.60
211550-70	PP 0.2T P71.70
211550-80	PP 0.2T P71.80
211520-91	PP 0.2T P71.90-140
211520-100	PP 0.2T P71.100
211520-110	PP 0.2T P71.110
211520-120	PP 0.2T P71.120
211520-130	PP 0.2T P71.130
211520-140	PP 0.2T P71.140
211550-14	PP 0.2T P71. (15/40)
211550-48	PP 0.2T P71.(45/80)
Item Code	PP 0.2T & no length marked/P61
211450-14	PP 0.2T P61.(15/40)
211450-48	PP 0.2T P61.(45/80)
211450-100	PP 0.2T P61.100
211450-110	PP 0.2T P61.110
211450-120	PP 0.2T P61.120

211450-130	PP 0.2T P61.130
211450-140	PP 0.2T P61.140
Item Code	PP 0.4T & no length marked/P71
221510-10	PP 0.4T P71.10
221510-25	PP 0.4T P71.25
221510-30	PP 0.4T P71.30
221510-35	PP 0.4T P71.35
221510-14	PP 0.4T P71.(15/40)
Item Code	PP 0.6T & no length marked/P71
231510-20	PP 0.6T P71.20
231510-25	PP 0.6T P71.25
231510-30	PP 0.6T P71.30
231510-35	PP 0.6T P71.35
231510-14	PP 0.6T P71.(15/40)
Item Code	PP 0.4T & blister cell pack/P61
221450-14	PP 0.4T P61.15-40
221450-15	PP 0.4T P61.15
221450-20	PP 0.4T P61.20
221450-25	PP 0.4T P61.25
221450-30	PP 0.4T P61.30
221450-35	PP 0.4T P61.35
221450-40	PP 0.4T P61.40
221450-45	PP 0.4T P61.45
Item Code	PP 0.6T & blister cell pack/P61
231450-14	PP 0.6T P61.15-40
231450-15	PP 0.6T P61.15
231450-20	PP 0.6T P61.20
231450-25	PP 0.6T P61.25
231450-30	PP 0.6T P61.30
231450-35	PP 0.6T P61.35
231450-40	PP 0.6T P61.40
Item Code	PP - Protaper
261510-F1	PP PT P71.F1
261510-F2	PP PT P71.F2
261510-F3	PP PT P71.F3
261510-ASST	PP PT P71.(F1/F3)
Item Code	Calcium Hydroxide
302002	Metapex Plus(with Iodoform & not water soluble) 2.2g syringe with 20 tips single syringe
301002	Metapaste Plus (with Barium Sulfate & water soluble) 2.2g syringe with 20 tips
Item Code	Sealer
3030002	ADSEAL Plus (Resin Based Sealer)
3030002TIP	ADSEAL Plus pre mixed tip
316001	CeraSeal (Root Canal Sealer)
Item Code	Cleaning Materials
304990	MD-ChelCream(EDTA Cream) 2 x 7g syringe w/10 tips
305990	MD-Cleanser (EDTA Solution) 100 ml w/one syringe and 3 tips

Item Code	Temporary Cavity Filling
306991	MD-Temp Plus Pink
307991	MD-Temp Plus White

## RESTORATIVE

Item Code	Etchant
309990	Meta Etchant (Etching agent) 3 syringe x 3g/ 37% phosphoric acid
Upon Request	Meta Etchant for refill (1 syringe)

Item Code	Temporary Cement
317020	NETC 40g Base paste/14g Catalyst Paste
317060	NETC Easy (9g syringe type x 2 syringes)
311000	METACEM KIT (2 syringes-9g, 1 adhesive-5g, 1 etchant-3g)
311010	METACEM Refill - A1
311030	METACEM Refill - A3
311070	METACEM Refill - B2
311110	METACEM Refill - opaque

Item Code	Bonding
310990	Meta P&Bond (Light Cured Dental Adhesive) 5g w/10 Micro brush

Item Code	Composite
314FKT	Ezfil Kit (A1, A2, A3, A3.5, B1, B2, OP x 4g ea, Meta P&Bond (1ea), Meta Etchant 3g(1ea) )
314RA1	Ezfil refill - A1 (4g x 1ea)
314RA2	Ezfil refill - A2 (4g x 1ea)
314RA3	Ezfil refill - A3 (4g x 1ea)
314RA5	Ezfil refill - A3.5 (4g x 1ea)
314RA4	Ezfil refill - A4 (4g x 1ea)
314RB1	Ezfil refill - B1 (4g x 1ea)
314RB2	Ezfil refill - B2 (4g x 1ea)
314RB3	Ezfil refill - B3 (4g x 1ea)
314RB3	Ezfil refill - B3 (4g x 1ea)
314RC2	Ezfil refill - C2 (4g x 1ea)
314RWT	Ezfil refill - WT (4g x 1ea)
314ROP	Ezfil refill - OP (4g x 1ea)
314RTL	Ezfil refill - TL (4g x 1ea)
312000	Nexcomp kit (Micro hybrid light-cured Composite Resin) 4g x 7 syringes + Bond+Etchant
312020	Nexcomp refill - A2shade (4g x1 syringe)
312030	Nexcomp refill - A3 shade (4g x1 syringe)
312040	Nexcomp refill - A3.5 shade (4g x1 syringe)
312060	Nexcomp refill - B1 shade (4g x1 syringe)
312070	Nexcomp refill - B2 shade (4g x1 syringe)
312110	Nexcomp refill - OP shade (4g x1 syringe)
312120	Nexcomp refill - WHT shade (4g x1 syringe)
313000	Nexcomp Flow Kit (A1,A2, A3.5, B2, B3)

313010	Nexcomp Flow refill - A1 shade (2g x2 syringe)
313020	Nexcomp Flow refill - A2shade (2g x2 syringe)
313030	Nexcomp Flow refill - A3 shade (2g x2 syringe)
313040	Nexcomp Flow refill - A3.5 shade (2g x2 syringe)
313060	Nexcomp Flow refill - B1 shade (2g x2 syringe)
313070	Nexcomp Flow refill - B2 shade (2g x2 syringe)
313080	Nexcomp Flow refill - B3 shade (2g x2 syringe)
313120	Nexcomp Flow refill - WT shade (2g x2 syringe)

## EQUIPMENT

Item Code	Apex Locator
P2901-US	EQ-Pex Full Kit

Item Code	Endodontic Motor
P2901-US	EQ-Pex Full Kit

Item Code	Obturation
EQV033	EQ-V Full Kit
EQV034	EQ-V Fill Kit
EQV032	EQ-V Pack Kit
EQV-F35	Refillable Cartridge (23 Gauge, 6ea/Pack)
EQV-F36	Refillable Cartridge (25 Gauge, 6ea/Pack)
EQV-F13	Plunger Assembly
EQV-F24	Plunger head (2ea)
EQV-F25	Plunger driver
EQV-F20	Plunger D
EQV-C30	Battery
EQV-C20	Single Charger
EQV-C10	Twin Charger
EQV-S02	Cleaning & Tools Kit (1 brush, multi tool)
EQ042	EQV Gutta Percha Bar (100 Bars/Box)

Item Code	Irrigation
026-210	EQ-S Gray Kit (Tip 90ea, Sleeve 100ea)
026-220	EQ-S Pink Kit (Tip 90ea, Sleeve 100ea)
126-070	EQ-S Protective Sleeve (100ea)
126-230	EQ-S Tip 15/02 (30ea white)
126-240	EQ-S Tip 25/02 (30ea red)
126-250	EQ-S Tip 35/02 (30ea green)

Item Code	EQ Condenser
027-110	EQ Condenser N40/S80 Kit
027-120	EQ Condenser N50/S100 Kit
027-130	EQ Condenser N60/S120 Kit
027-240	EQ Condenser 3 Set (CE)



META BIOMED INC. • 3015 Advance Lane, Colmar, PA 18915 USA  
Tel: 267.282.5893 • Fax: 267.282.5899 • E-mail: [america@metabiomed-inc.com](mailto:america@metabiomed-inc.com)

[WWW.METABIOMEDAMERICAS.COM](http://WWW.METABIOMEDAMERICAS.COM)

0223-2024