

NexPost

Glass-fiber reinforced
composite post

Anchor with Confidence!

Essential ingredient for stability



 www.facebook.com/Metabiomed.Endodontics

 www.instagram.com/metabiomedinc

 META
BIOMED

Features

Advantages

- Radiopaque
- Translucent
- Optimal flexural strength (close to dentin)
- Excellent light translucency for efficient light cure deep into the root canal

Composition

- Glass Fiber
- Bis-GMA based resin

Physical and Chemical Properties



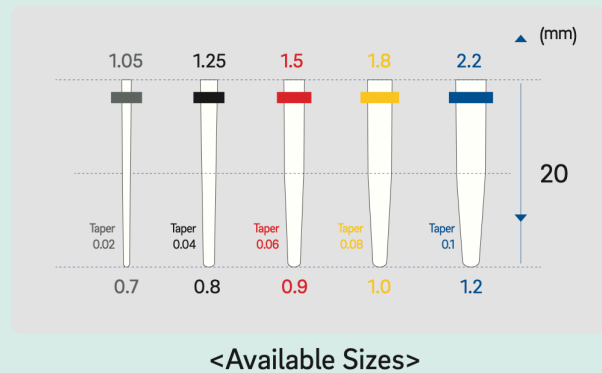
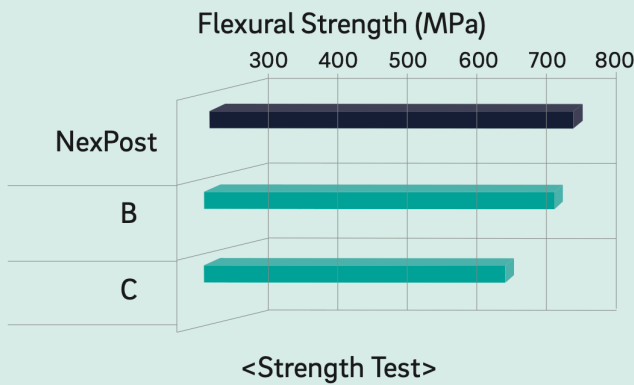
<Light Transmission>

<Radiopacity>

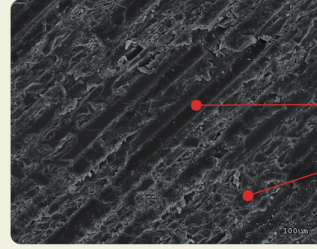
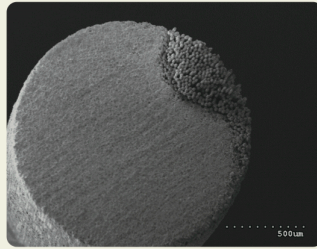
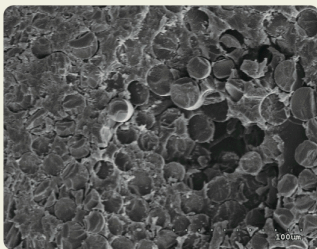
Ordering Information

Item Code	Description
409001	Full Kit (Drills (5ea), Post 5sizes x 5ea (1.05, 1.25, 1.5, 1.8, 2.2))
409002	Small Kit (Drills (3ea), Post 3sizes x 5ea (1.05, 1.25, 1.5))
409111	Ø1.05mm Drill Refill (1ea)
409151	Ø1.25mm Drill Refill (1ea)
409102	Ø1.50mm Drill Refill (1ea)
409121	Ø1.80mm Drill Refill (1ea)
409132	Ø2.20mm Drill Refill (1ea)
409011	Ø1.05mm Refill (5ea)
409051	Ø1.25mm Refill (5ea)
409101	Ø1.50mm Refill (5ea)
409201	Ø1.80mm Refill (5ea)
409302	Ø2.20mm Refill (5ea)

Specifications



Scanning Electron Microscope



Glass fiber

Composite resin matrix

Meta Biomed Co., Ltd – Head Office
270 Osongsaengmyeong1-ro, Osong-eup
Heungdeok-gu, Cheongju-si,
Chungbuk, Korea
Phone: +82 43 216 0433
dental@meta-biomed.com
www.meta-biomed.com

Meta Biomed Inc.
3015 Advance Lane
Colmar, PA 18915,
USA
Phone: +1 267 282 5893
america@metabiomed-inc.com
www.metabiomedamericas.com

Meta Biomed Europe GmbH
Wiesenstr. 35,
45473 Mülheim an der Ruhr,
Germany
Phone: + 49 208 309 91910
europe@meta-europe.com
www.meta-europe.com