

EQ-V

Easy and convenient cordless obturator
with innovative cartridge

Your Choice for Warm Gutta Percha Obturation!

The new EQ-V system by META BIOMED
for the reliable, convenient and
precise root canal obturation.
Find out more inside!



USA Version

 www.metabiomedshop.com

 www.facebook.com/Metabiomed.Endodontics

 www.instagram.com/metabiomedus

 META
BIOMED

The EQ-V – Easy and Quick System

The difference is in the details



Manual System

- Precise extrusion
- Easy maintenance



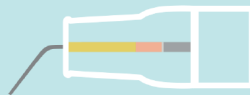
Replaceable / Rechargeable Battery

- No separate tools needed
- Extra battery allows uninterrupted treatments



Chemical Resistant

- Any disinfectants can be used
- No cracks!



Refillable Cartridges

- Gutta percha fits directly inside the cartridge for clean delivery
- One click lock in



360° Ring Button

- Allows easy access to mandible and maxilla



Safe Heating System

- Auto shut-off ensures patients' safety
- Saves battery life



EQ-V Full Kit

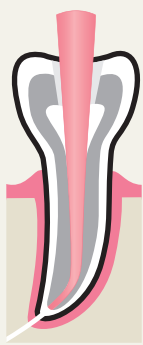


EQ-V Fill



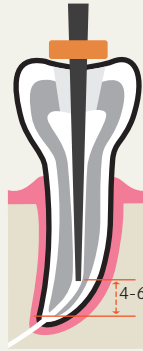
EQ-V Pack

Obturation Sequence -

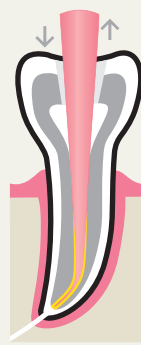


1 Select master cone, place it into the prepared root canal and check Tug-back.

Insert **pack tip** into the canal; 4-6mm of your working length, and mark it with the rubber stopper.



3 Apply **ADSEAL** (root canal sealer) at the end of the master cone and insert it into the canal.



4 Remove excess **GP** at the orifice level with heated **pack tip**.



5 Compact the softened **GP** down with **EQ condenser**.
* Recommend using **EQ Condenser**

6 Insert **pack tip** 2mm short of reference point while activating pack tip.



7 Maintain apical pressure for 10 seconds. With residual heat, condense up to the reference point.



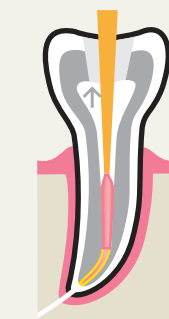
8 Activate **pack tip** for 1 second and remove quickly.



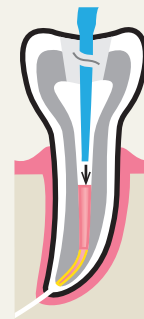
9 Compact remaining **GP** in the apical third with **EQ condenser**.



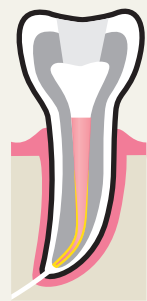
10 Insert **GP bar** into the fill unit and set the desired temperature.
* **Caution!** Before injecting needle into canal, check if melted **GP** is coming out of needle.



11 Place the **cartridge** in the canal and inject melted **GP**.

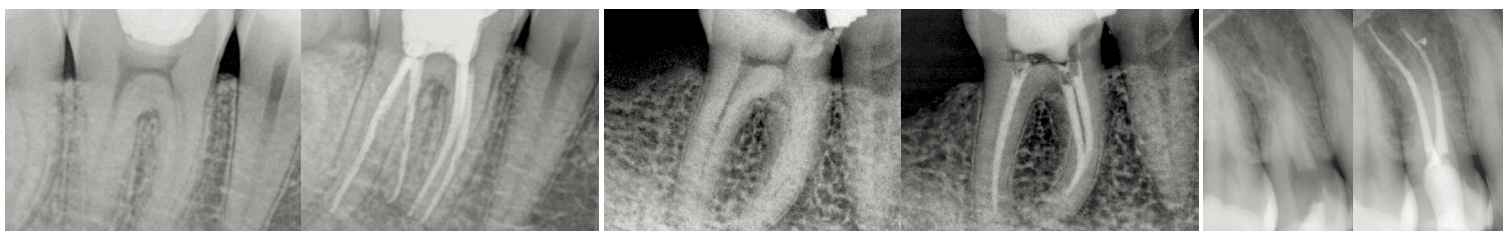


12 Compact with **EQ Condenser**.



13 Repeat 11-12 steps until root canal is fully obturated.

Clinical Cases:



Before

After

Before

After

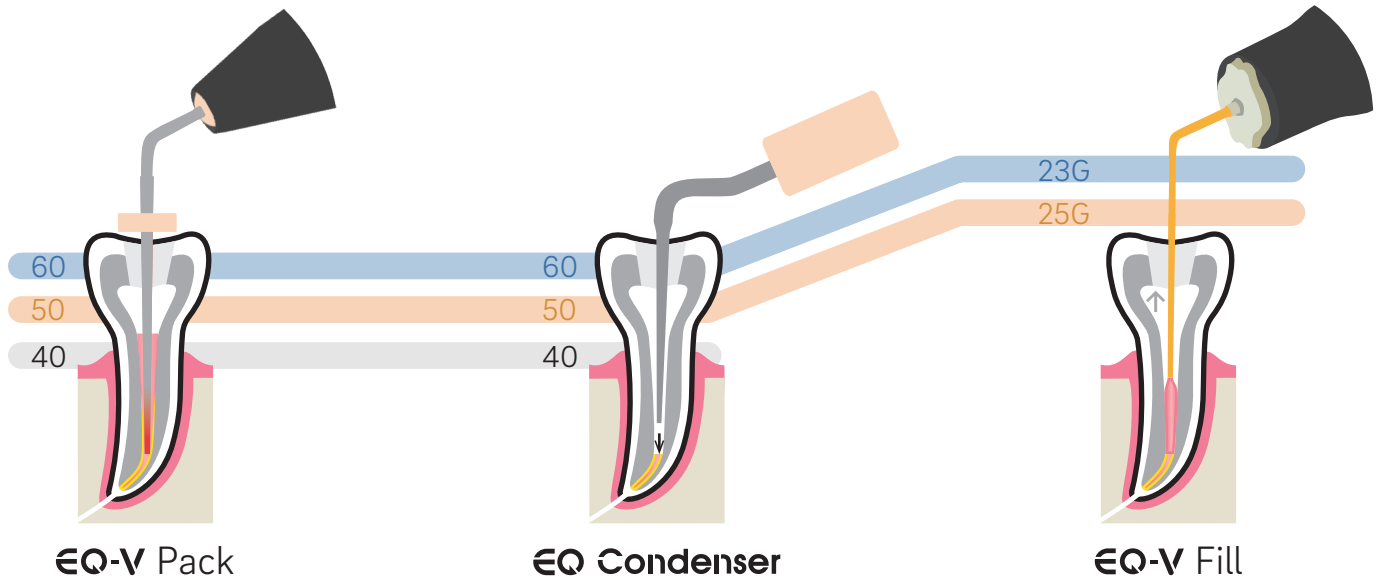
Before

After

Courtesy of
Dr Jenner O. Argueta

Courtesy of
Dr Álvaro Barrios Angulo

Courtesy of
Dr Walter Vargas Obando



Type	Contents	Fill Unit	Pack Unit	Battery	Single Charger	Dual Charger	Packtip (50/.04, 60/.05) (2ea/1pk)	Cartridge (25G) (6ea/1pk)	Bending Tool	Cleaning Tool	AC Adapter	Power Cord	GP Bar (100bars/bottle)	Seal Driver	Plunger Seal (2ea/1pk)
Full Kit		0	0	0 (3ea)		0	0	0	0	0	0	0	0	0	0
Fill Kit		0		0 (2ea)	0			0	0	0	0	0	0	0	0
Pack Kit			0	0 (2ea)	0		0				0	0			

R = Refillable

Ordering Information

Item Code	Description	Item Code	Description
EQV033	Full kit	EQV-P24	Pack tip (1ea - 60/.05L)
EQV034	Fill Kit	EQV-P25	Pack tip (1ea - 50/.04, 1ea - 60/.05)
EQV032	Pack kit	EQV-P26	Pack tip (1ea - 40/.03, 1ea - 50/.04, 1ea - 60/.05, 1ea - 60/.05L)
EQV-F35	Refillable cartridge 23G(6ea/pack)	EQV042	Gutta percha bar (100 bars/bottle)
EQV-F36	Refillable cartridge 25G(6ea/pack)	EQV-F13	Plunger (plunger+plunger seal)
EQV-F32	Refillable cartridge 23G, 25G (6ea/pack)	EQV-F24	Plunger seal (2ea/bag)
EQV-P21	Pack tip (1ea - 40/.03)	EQV-F25	Plunger seal driver
EQV-P22	Pack tip (1ea - 50/.04)	EQV-C30	Battery
EQV-P23	Pack tip (1ea - 60/.05)	EQV-S02	Cleaning & tools kit (1ea brush, 1ea multi tool)

Specifications

Charger	Input	DC 9V, 2A
	Output	DC 5V, 800mA
EQ-V Fill	Heater	DC 3.6V, 10W
	Heating Time	Within 35 seconds
EQ-V Pack	Heating Time	Within 1 second
Operating Time	Fill	Continuous for 1 hour
	Pack	Continuous for 1.5 hours
Battery (Li-ion type)	Li-ion	3.6V, 1900mAh
	Charging Time	2.5 hours

Meta Biomed Co., Ltd - Head Office
270 Osongsaengmyeong1-ro,
Osong-eup
Heungdeok-gu, Cheongju-si,
Chungbuk, Korea
Phone: +82 43 218 1981
info@meta-biomed.com
www.meta-biomed.com

Meta Biomed Inc. - America
3015 Advance Ln,
Colmar, PA 18915,
U.S.A
Phone: +1 267 282 5893
america@metabiomed-inc.com
www.metabiomedamericas.com

Meta Biomed Europe GmbH - Europe
Wiesenstraße 35
45473 Mülheim an der Ruhr,
Germany
Phone: +49 208 309 9190
europe@meta-europe.com
www.meta-europe.com