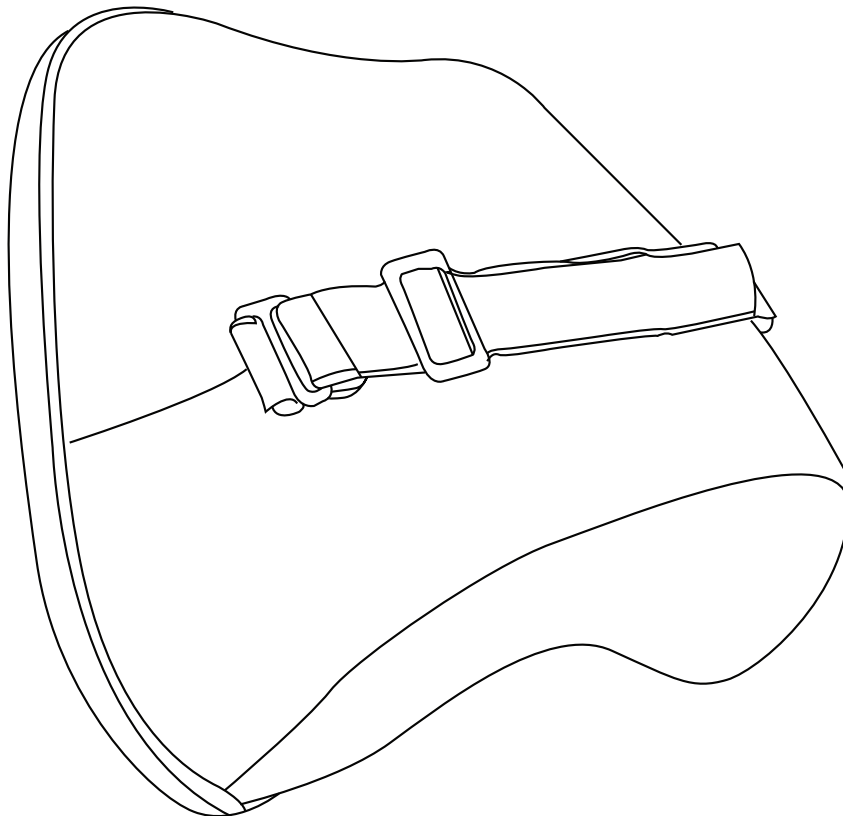


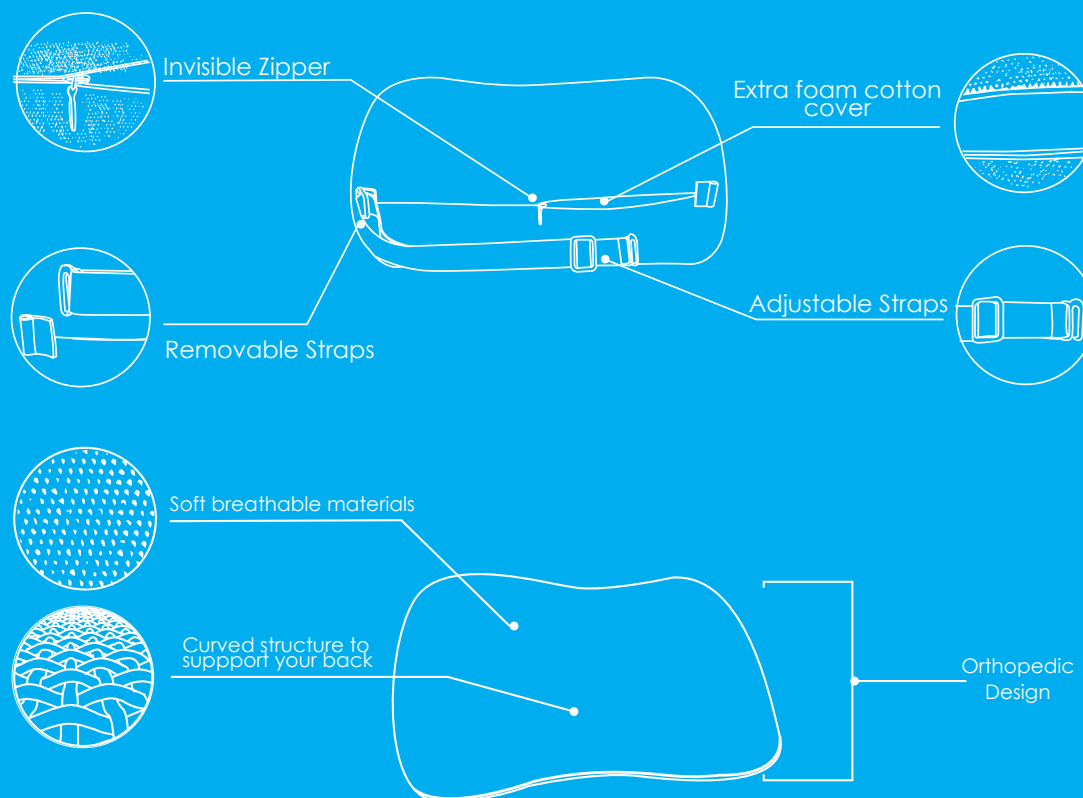
# RS1 - BACK CUSHION

## INSTRUCTION MANUAL



**Received a defective item, or pillow does not fit you?**

<https://relaxsupport.org/policies/refund-policy>



## Purpose and Description of the Product

The RS1 BACK CUSHION is designed to provide support and comfort to the user. It is ergonomically designed to perfectly match the alignment and shape of the lower back to provide support and help stabilize the lumbar curve. The product helps relieve and alleviate back pain, arthritis, muscle pain, blood circulation, disorders, etc. When used correctly, it may help protect and restore an individual's body posture.

The product is made with a soft breathable removable cotton cover, which keeps air circulating all day long and provides comfort. The product is adaptive and is suitable for normal office chairs, car seats, truck seats, public transport chairs, wheelchairs and airplane seats.

It is lightweight and portable. It can be reused and moved from one place another.

## Features

### Orthopedic design

It's uniquely contoured structure with special lateral convex shape gives you additional support and adapts to the lumbar curve.

### The adjustable and removable strap

It is included to make sure you get the best support without the BACK CUSHION slipping or sliding. The strap helps to hold the product in place and it adjusts to help attach the product tightly to the back of the chair. The strap can also be removed.

### Invisible zipper

The zipper can be easily undone to remove the foam cushion from the cover to wash or dry.

## Product Size

16.5L x 4W x 8.3H inches

## Warning!

Memory foam gets harder at lower temperatures, but after a short time when the pillow is re-equilibrating, either with your body temperature or the air temperature, it returns to its original hardness. To avoid this inconvenience, we recommend that you use your pillow under normal temperature conditions between 59-77 F.

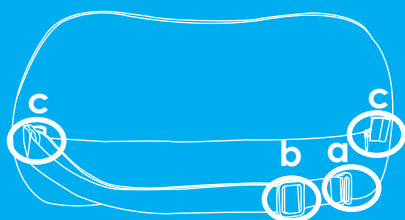
\* Do not store your pillow at low temperatures. If needed, move your pillow to normal temperatures when not in use.

## Cleaning Instructions

- ✓ Unzip the invisible zipper of the RS1 BACK CUSHION and remove the foam cushion from inside the cover.
- ✓ Insert the cover into the washing machine, add non-bleaching washing detergent and wash on warm. For best results, keep the zipper closed.
- ✓ Remove from the washing machine, and air dry or tumble dry on low heat.
- ✓ Insert the foam cushion back into the cover, ensure the foam cushion is fully inserted and the perimeter of the foam is aligned with the cover seams, then zip closed.

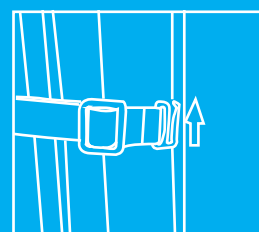
## How to Install

- 1 Prepare the chair (office chair, car seat, wheel-chair, etc.) prior to attaching the RS1 BACK CUSHION. Make sure it is free of objects and creases which can cause discomfort to the user.
- 2 Place the back cushion on the chair, make sure it is centered, then fasten the strap at the back of the chair to prevent it from slipping or sliding.

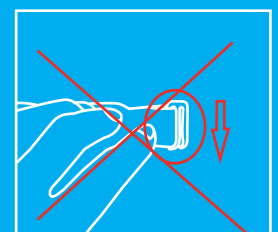


- a. Remove one side of elastic strap
- b. Adjust the elastic strap to fit your chair
- c. Loop hole for hook

- 3 Install the cushion to the vertical part of the chair and put the hook through loop hole. When you install the elastic strap it is important that you hook it upward and not facing down. This prevents it from coming off.

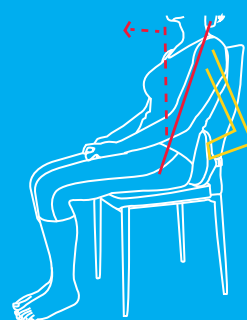
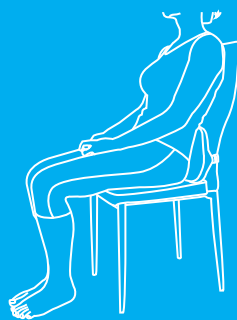


Buckle must be facing up as shown in the picture.



Buckle facing down is not correct.

- 4 The upper part of the body is slightly moved forward. With the hands holding the pillow adjust it to the most comfortable position for you to get the support that the pillow offers. It is very important that the pillow is adapted to the body in the most comfortable position.



## Product In Use



### Storage of the Product

- ✓ The product will deteriorate if stored in wet or damp conditions.
- ✓ Never store your back support in conditions of extreme heat or exposure to direct sunlight for long periods of time.
- ✓ For extended storage, store in plastic and sealed containers.

### Unslipping

For non-slip cushion - correctly turn the elastic strap hook from the bottom up and not from the top down. See the detailed instructions HOW TO INSTALL..

### Adjustment

Because this is something new for your back, you will need a few days to get used to it. This is a big change for your lumbar support.

### Does not fit You


If the product does not fit you, you can replace it for a softer or harder pillow. NO NEED TO RETURN, contact us and we will help you.

### Does not fit You

If you happen to receive a damaged product, Contact Us for Replacement or Refund. NO NEED TO RETURN defective one. Expedited Shipping for your replacement.

### Contact Us

Email or send us a private message on **Facebook Messenger** and we will help you.

 [info@relax-support.com](mailto:info@relax-support.com)

 [@relaxsupport](https://www.facebook.com/relaxsupport)

 [@relaxsupport](https://www.instagram.com/relaxsupport)