

Assembly Instructions



NNI FITNESS 2020+

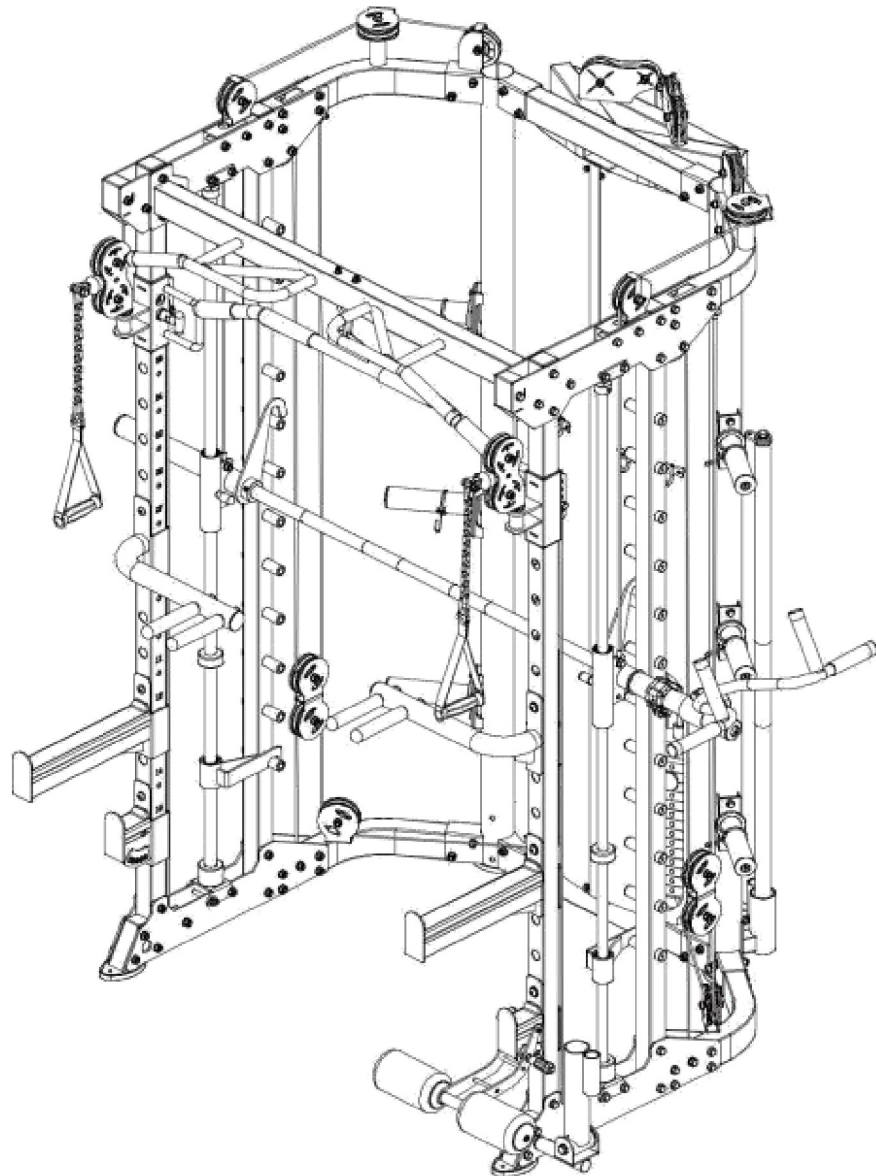


Table of Contents

Spare part list	3
Spare part list	4
Spare part list	5
Assembly (1)	6-7
Assembly (2)	8-10
Assembly (3)	11-12
Assembly (4)	13-14
Assembly (5)	15-16
Assembly (6)	17-18
Assembly (7)	19-20
Assembly (8)	21-22
Assembly (9)	23-24
Assembly (10)	25-26
Card.....	27

Owner's Manual Orbit X305

CAUTION:

Exercise of a strenuous nature, as is customarily done on this equipment, should not be undertaken without first consulting a physician. No specific health claims are made or implied as they relate to the equipment. Measurements made by the equipment are believed to be accurate, but only the measurements of your physician should be relied upon.

IMPORTANT:

Read all instructions carefully before using this product. Retain this product owner's manual for future reference.

Spare parts list

No.	Description	Note	Qty.
1	connection tube		1
2	upright frame left		1
3	upright frame right		1
4	bending tube left		1
5	bending tube right		1
6	upper connection tube		1
7	upper bending tube right		1
8	upper bending tube left		1
9	hexagon bolt	M10x75	54
10	lock nut	M10	100
11	washer	Φ10	210
11	washer	Φ10	1
12	chin up bar		4
13	upper plate		1
14	pulley frame tube right		1
15	pulley frame tube left		2
16	upright tube		1
17	tube with hole right		1
18	tube with hole left		4
19	lower plate		1
20	sliding tube right		1
21	sliding tube left		2
22	foot tube cover		2
23	end tube		14
24	hexagon bolt	M10x80	2
26	upper base		2
27	guide rod	Φ25x1850	2
28	lock sleeve		2
29	sliding sleeve		2
30	rubber pad with groove	Φ60xΦ26x45	2
31	safety hook right		1
32	safety hook left		1
33	hexagon bolt	M10x90	8
34	socket set screw	M8x10	2
35	end cap		2

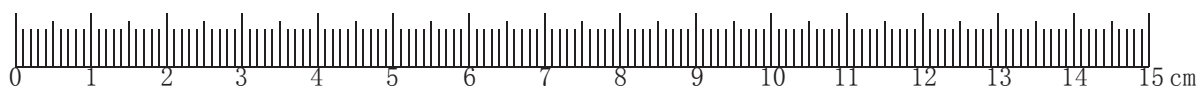
Spare parts list

No.	Description	Note	Qty.
36	check ring		2
37	pipe	Φ	2
38	button head socket screw	M12x40	2
39	spring washer	Φ12	2
40	washer	Φ12	2
41	barbell rod		1
42	inner pipe	Φ	2
43	rubber pad	Φ60xΦ26x25	2
44	rubber pad	Φ60xΦ26x42	4
45	guide rod hollow	Φ25x1955	4
46	reinforcing plate		4
47	weight stack		2
48	hexagon bolt	M10x20	8
49	wire	Φ5x2745mm	2
50	pulley	Φ95	20
51	pulley plate		4
52	hexagon bolt	M10x45	14
53	hexagon bolt	M10x50	4
54	hexagon bolt	M10x25	7
55	weight		2
56	wire	Φ5x4095mm	2
57	"-“ shape pulley frame		2
58	pulley spacer sleeve	Φ	16
59	pulley	Φ50	6
60	wire		2
61	barbell plate holder		6
62	connection strap		1
63	shield left		1
64	shield right		1
65	hexagon bolt	M6x16	10
66	washer	Φ6	10
67	hook		4
68	"+" slotted countersunk head bolt	M4x12	8
69	lock nut	M4	8
70	hexagon bolt	M8x20	12

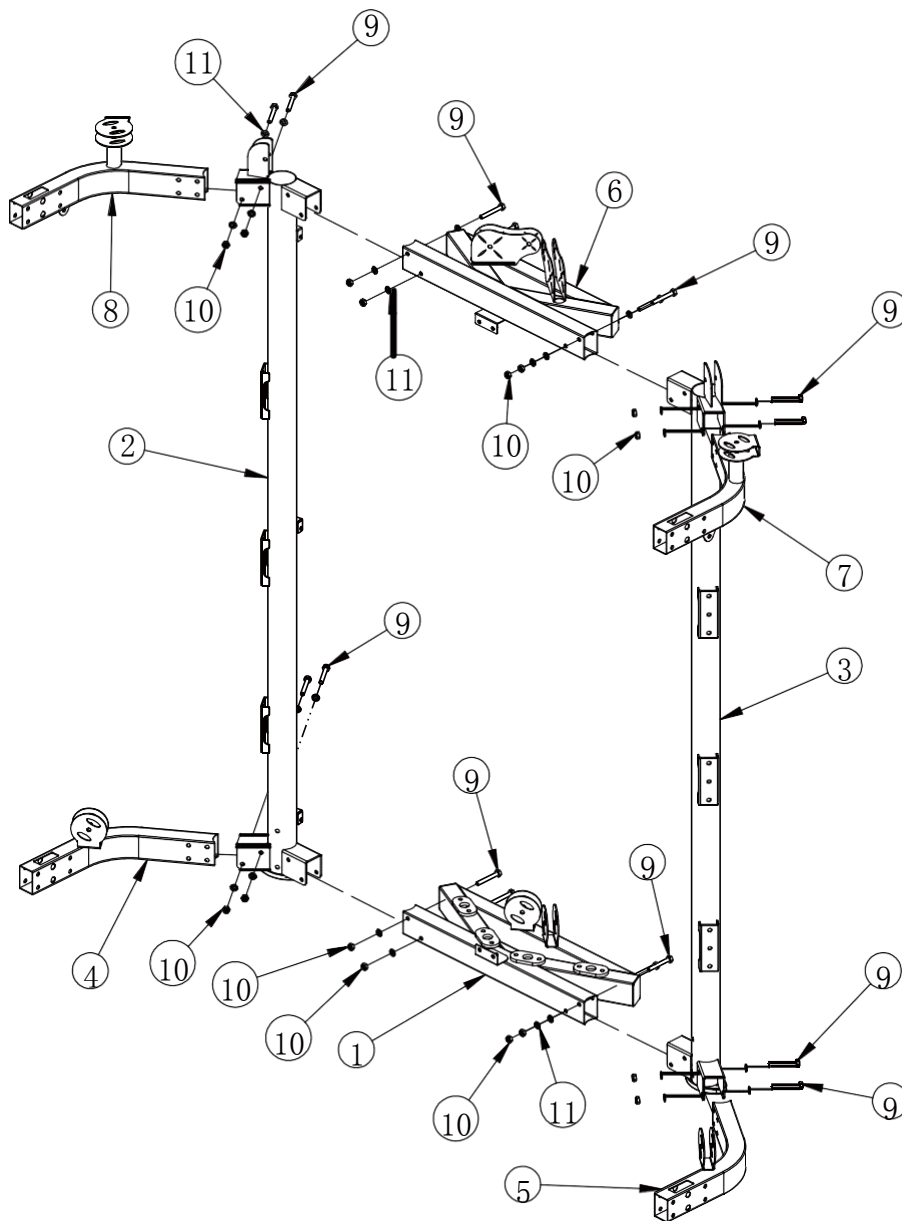
Spare parts list

71	washer	Φ8	12
72	core trainer		1
73	powder metallurgy sleeve		2
74	barbell rod cup		1
75	big washer	Φ25x10x2.0	1
76	hexagon bolt	M10x95	2
77	dip bar left		1
78	dip bar right		1
79	barbell rod holder right		1
80	barbell rod holder left		1
81	barbell rod holder short left		1
82	barbell rod holder short right		1
83	long bar		1
84	ship rod		1
86	pull lift device		1
87	T shape pin	Φ10x100	1
88	leg curl tube		1
89	barbell clamp collar		2
90	selector rod		2
91	weight pin		2

Bolt length measurement ruler

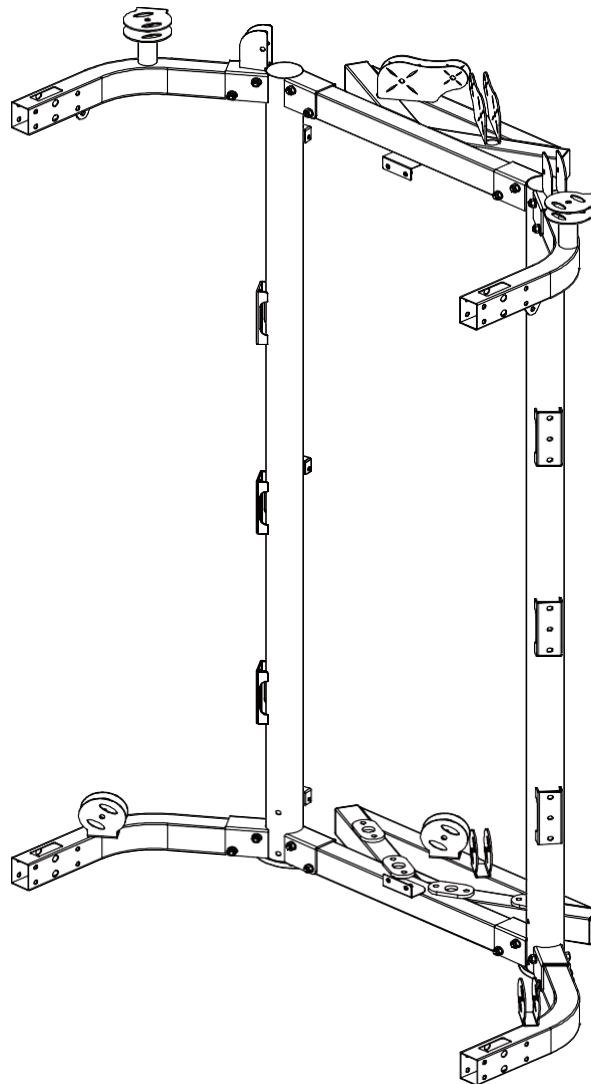


Assembly step (1) explosion drawing



No.	Description	Note	Qty.
1	connection tube		1
2	upright frame left		1
3	upright frame right		1
4	bending tube left		1
5	bending tube right		1
6	upper connection tube		1
7	upper bending tube right		1
8	upper bending tube left		1
9	hexagon bolt	M10x75	16
10	lock nut	M10	16
11	washer	Φ10	32

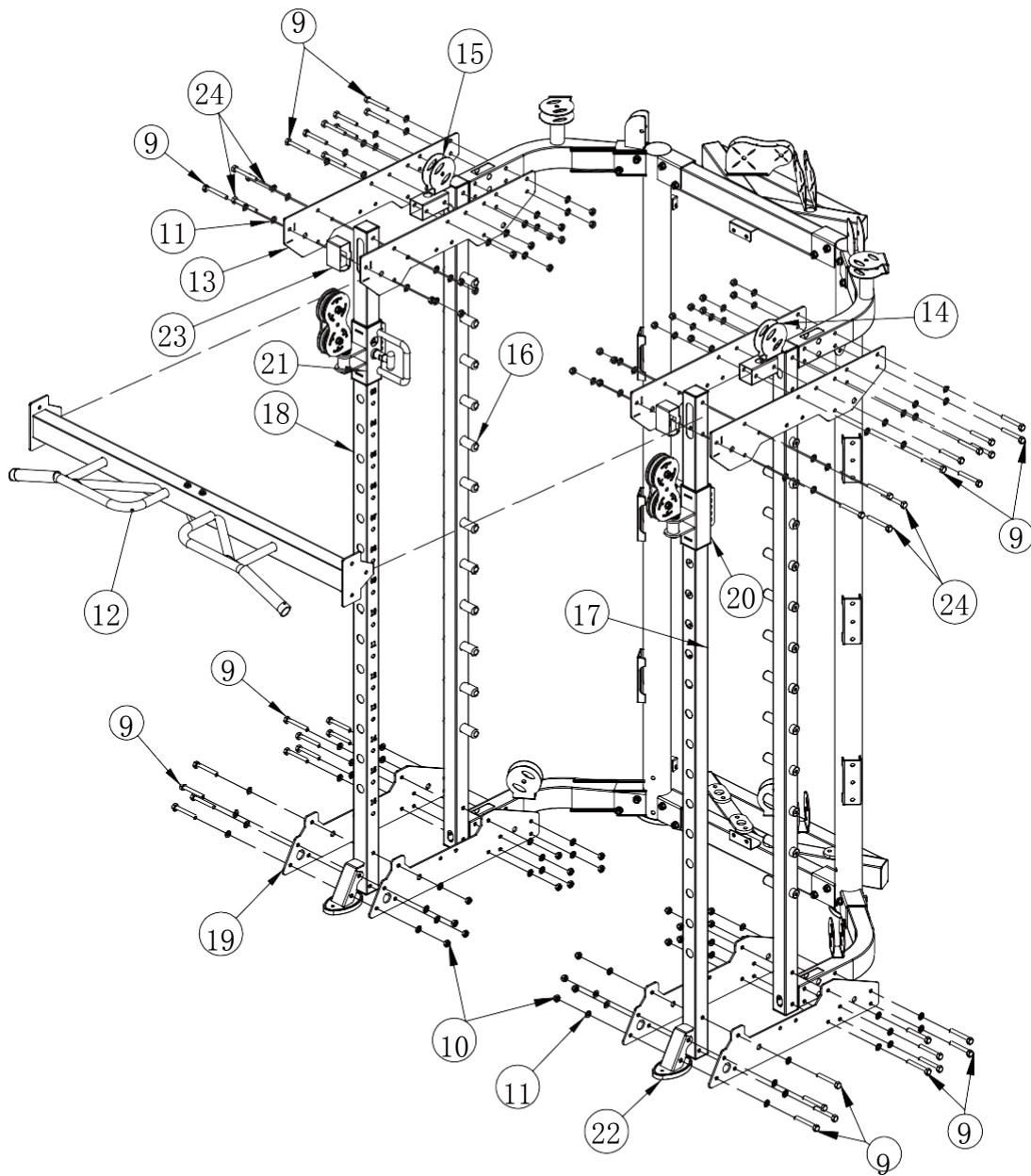
Assembly step (1) drawing



Assembly step (1) assembly instruction

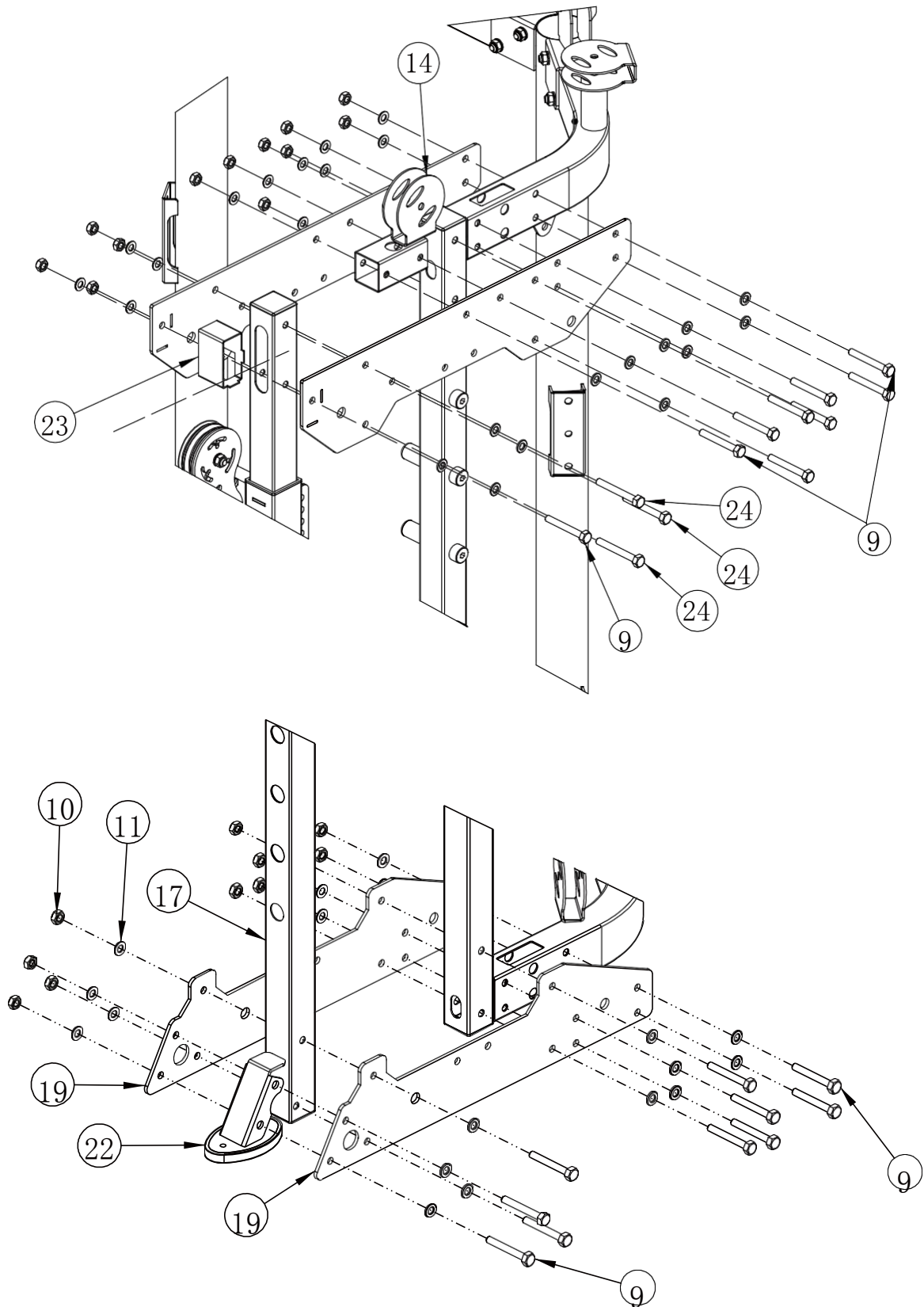
- | | |
|---|---|
| 1 | Fix bending tube left-4 fastening on upright frame left-2 using M10x75 hexagon bolt-9, Φ 10 washer-11 and M10 lock nut-10 |
| 2 | Fix bending tube right-5 fastening on upright frame right-3 using M10x75 hexagon bolt-9, Φ 10 washer-11 and M10 lock nut-10 |
| 3 | Fix connection tube-1 fastening with bending tube left-4, bending tube right-5 using M10x75 hexagon bolt-9, Φ 10 washer-11 and M10 lock nut-10 |
| 4 | Fix upper connection tube-6 fastening on upright frame using M10x75 hexagon bolt-9, Φ 10 washer-11 and M10 lock nut-10 |
| 5 | Fix upper bending tube left-8 fastening on upright frame left-2 using M10x75 hexagon bolt-9, Φ 10 washer-11 and M10 lock nut-10 |
| 6 | Fix upper bending tube right-7 fastening on upright frame right-3 using M10x75 hexagon bolt-9, Φ 10 washer-11 and M10 lock nut-10 |

Assembly step (2) explosion drawing

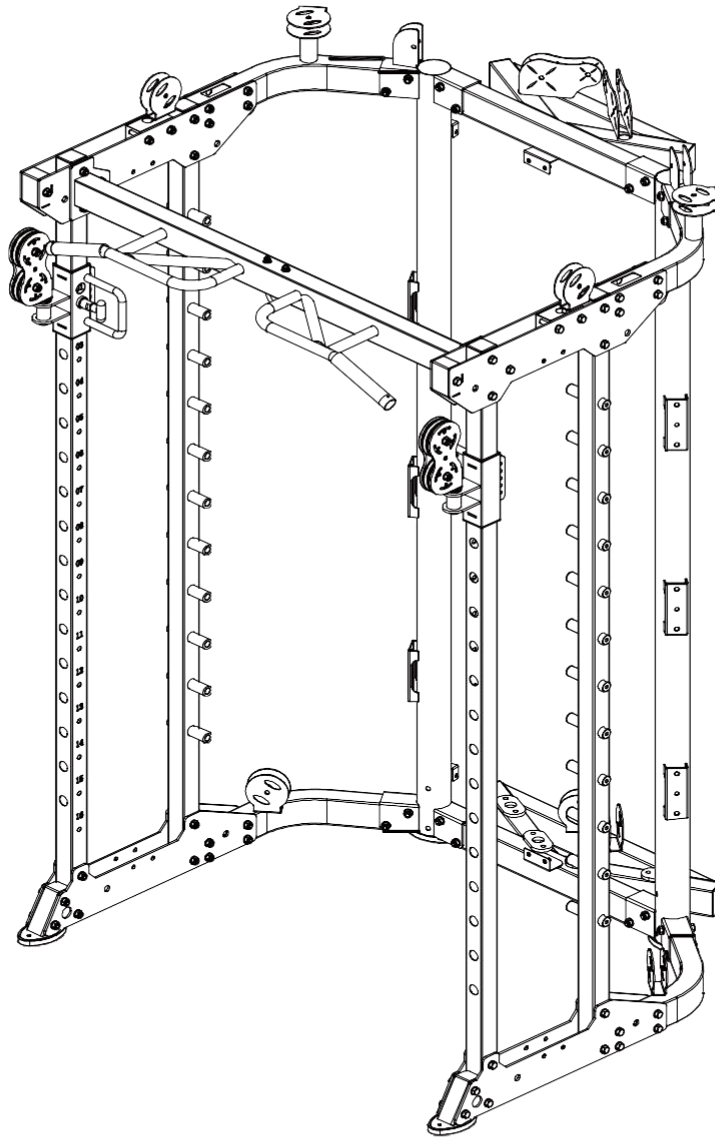


No.	Description	Note	Qty.	No.	Description	Note	Qty.
9	hexagon bolt	M10x75	38	17	tube with hole right		1
10	lock nut	M10	44	18	tube with hole left		1
11	washer	Φ10	88	19	lower plate		4
12	chin up bar		1	20	sliding tube right		1
13	upper plate		4	21	sliding tube left		1
14	pulley frame tube right		1	22	foot tube cover		2
15	pulley frame tube left		1	23	end tube		2
16	upright tube		2	24	hexagon bolt	M10x80	6

Assembly step (2) Enlarged View



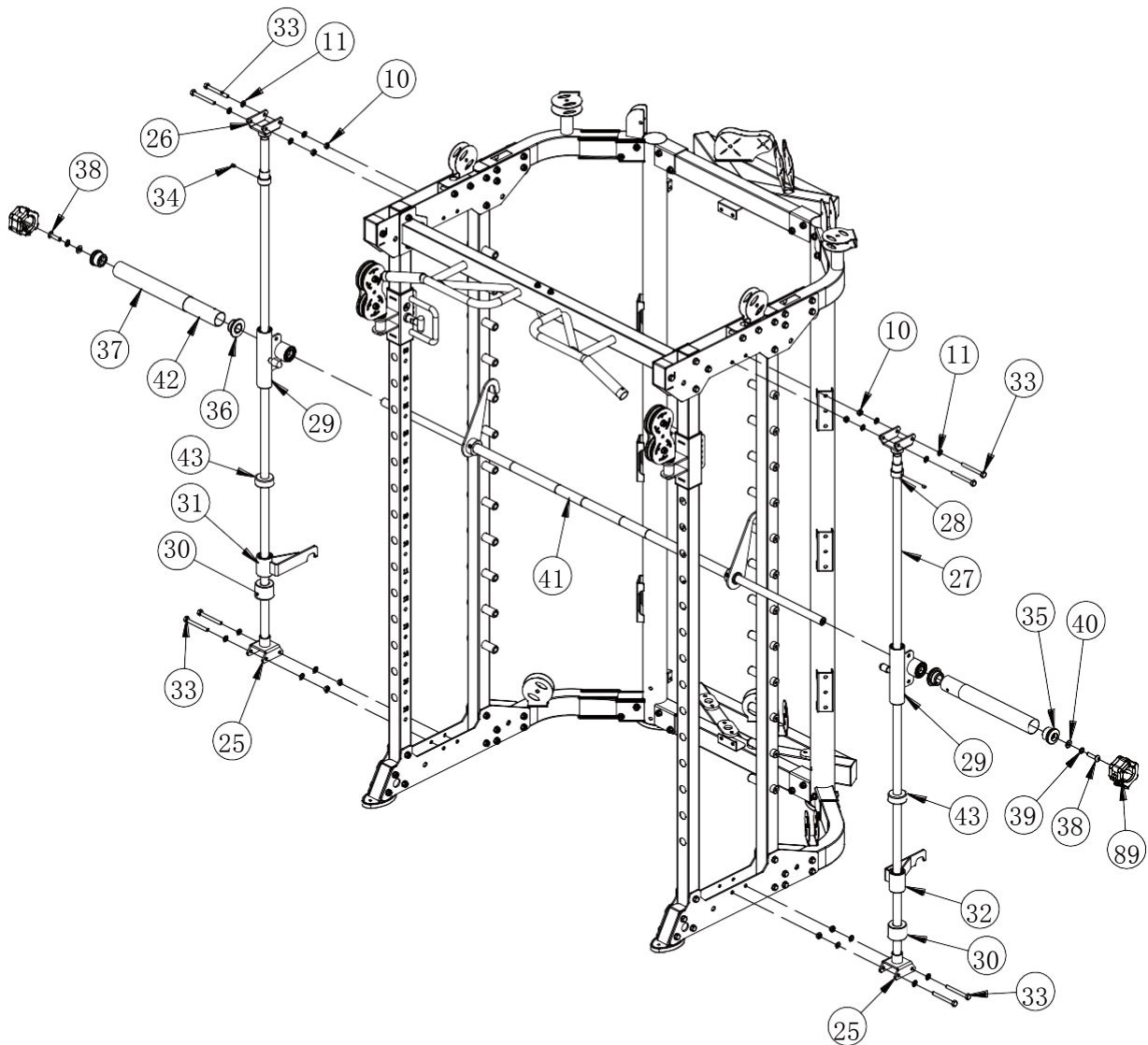
Assembly step (2) drawing



Assembly step (2) assembly instruction

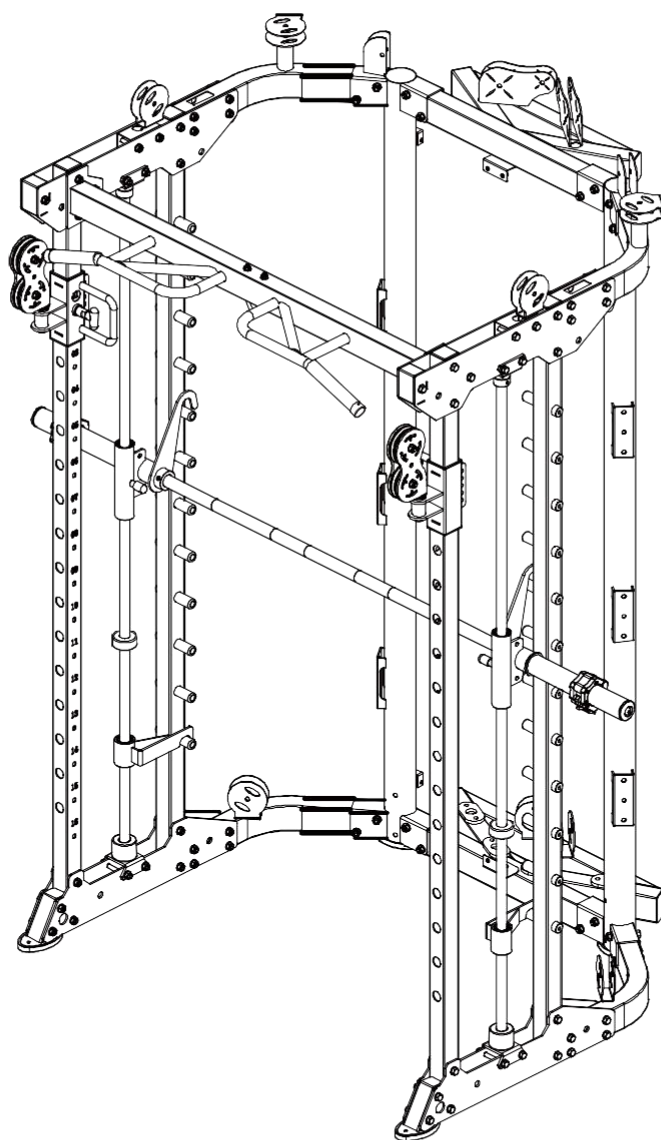
- | | |
|---|--|
| 1 | Fix sliding tube left-21 on tube with hole left-18 |
| 2 | Fix sliding tube right on tube with hole right-17 |
| 3 | Fix upright tube-16 and tube with hole left-18 fastening on assembly step-1 using M10x75 hexagon bolt-9, Φ 10 washer-11, M10 lock nut-10, upper plate-13 and lower plate-19 |
| 4 | Fix pulley frame tube right-14 and pulley frame tube left-15 fastening on upper plate-13 using M10x75 hexagon bolt-9, Φ 10 washer-11 and M10 lock nut-10 |
| 5 | Fix end tube-23 fastening on upper plate-13 using M10x75 hexagon bolt-9, Φ 10 washer-11 and M10 lock nut-10 |
| 6 | Fix foot tube cover-22 fastening on lower plate-19 using M10x75 hexagon bolt-9, Φ 10 washer-11 and M10 lock nut-10 |
| 7 | Fix chin up bar-12 fastening on upper plate-13 using M10x80 hexagon bolt-24, Φ 10 washer-11 and M10 lock nut-10 |

Assembly step (3) explosion drawing



No.	Description	Note	Qty.	No.	Description	Note	Qty.
10	lock nut	M10	8	34	socket set screw	M8x10	2
11	washer	Φ10	16	35	end cap		2
25	lower base		2	36	check ring		2
26	upper base		2	37	pipe	Φ50x310xT0.5	2
27	guide rod	Φ25x1850	2	38	button head socket screw	M12x40	2
28	lock sleeve		2	39	spring washer	Φ12	2
29	sliding sleeve		2	40	washer	Φ12	2
30	rubber pad with groove	Φ60xΦ26x45	2	41	barbell rod		1
31	safety hook right		1	42	inner pipe	Φ48x298x2.5T	2
32	safety hook left		1	43	rubber pad	Φ60xΦ26x25	2
33	hexagon bolt	M10x90	8	89	barbell clamp collar		2

Assembly step (3) drawing

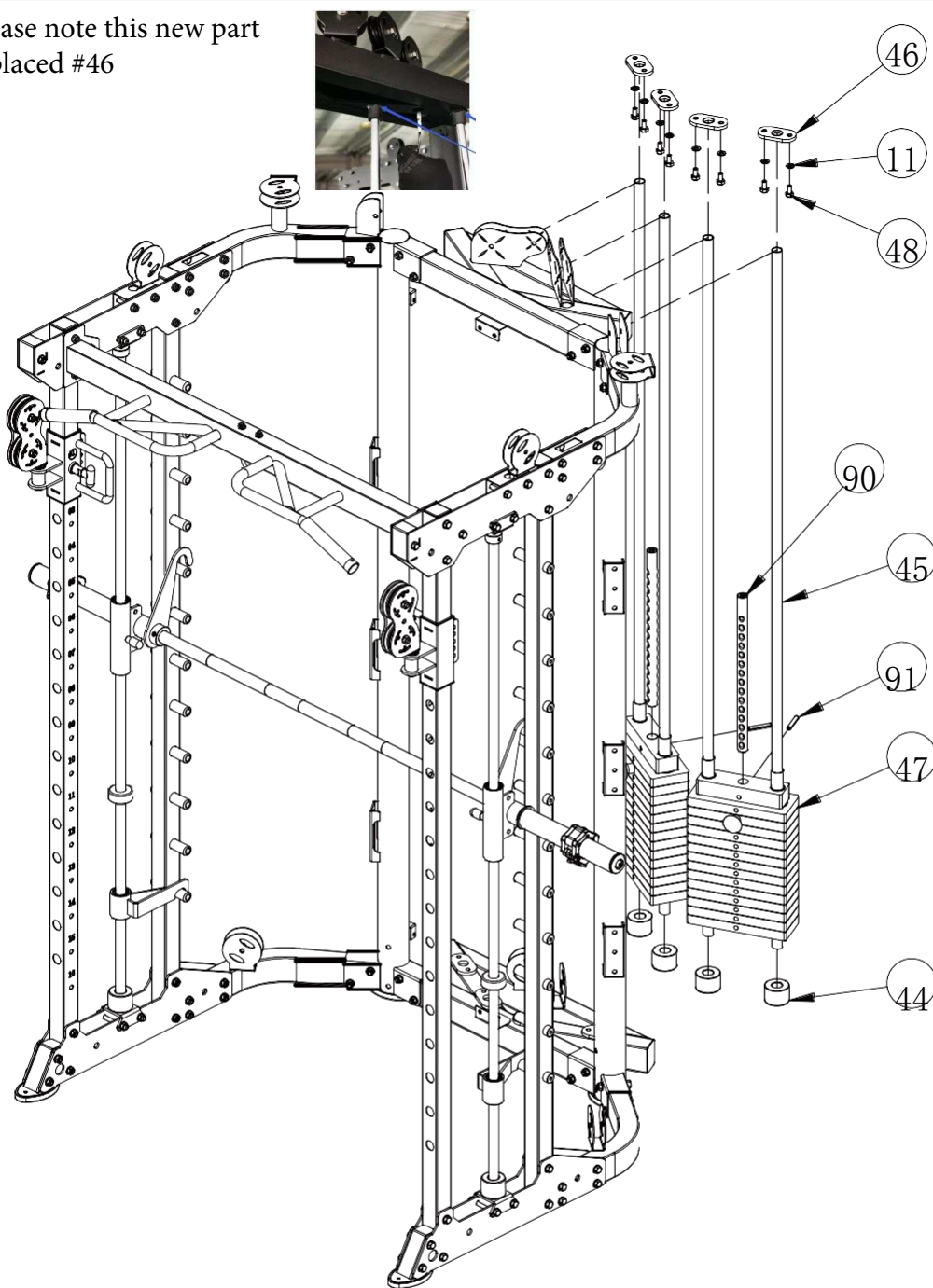


Assembly step (3) assembly instruction

- 1 Fix lower base-25 fastening on lower plate using M10x90 hexagon bolt-33, Φ 10 washer-11 and M10 lock nut-10
- 2 Fix upper base-26 fastening on upper plate using M10x90 hexagon bolt-33, Φ 10 washer-11 and M10 lock nut-10
- 3 Guide rod in turn through lock sleeve-28, sliding sleeve-29, rubber pad-43, safety hook left-32 and rubber pad with groove-30 fastening on base using M8x10 socket set screw-34
- 4 Barbell rod-41 in turn through sliding sleeve-29, check ring-36, inner pipe-42, pipe-37 and end cap-35 fastening using M12x40 button head socket screw-38, Φ 12 spring washer-39 and Φ 12 washer-40, then fit on barbell clamp collar-89
- 5 Guide rod in turn through lock sleeve-28, sliding sleeve-29, rubber pad-43, safety hook right-31 and rubber pad with groove-30 fastening on base using M8x10 socket set screw-34

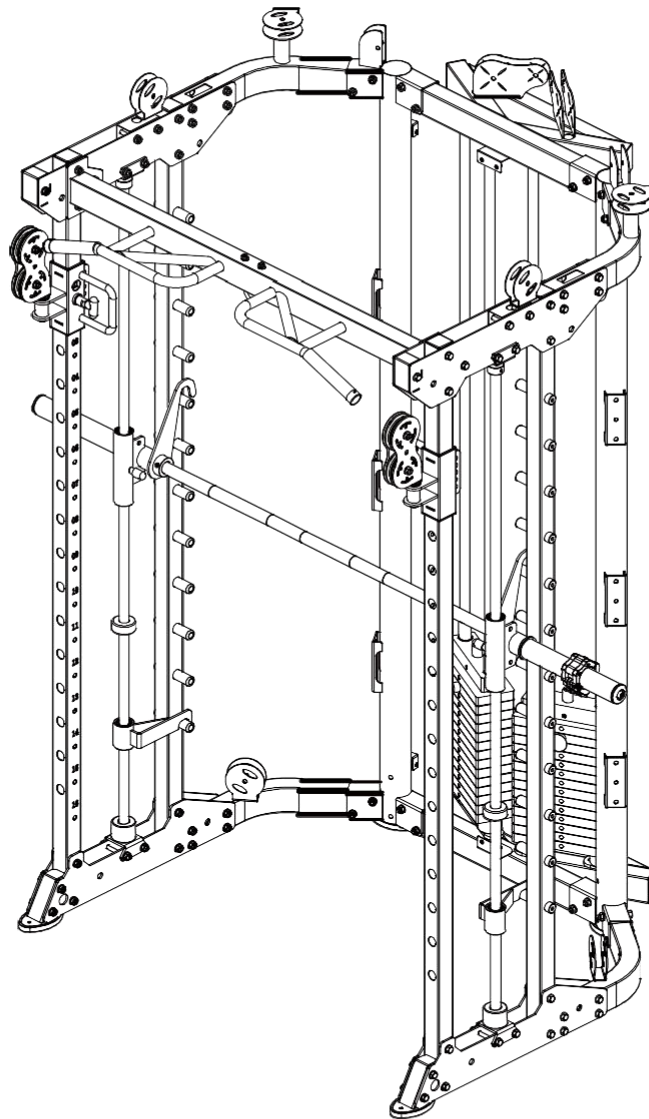
Assembly step (4) explosion drawing

Please note this new part replaced #46



No.	Description	Note	Qty.
11	washer	Φ10	8
44	rubber pad	Φ60xΦ26x42	4
45	guide rod hollow	Φ25x1955	4
46	reinforcing plate		4
47	weight stack		2
48	hexagon bolt	M10x20	8
90	selector rod		2
91	weight pin		2

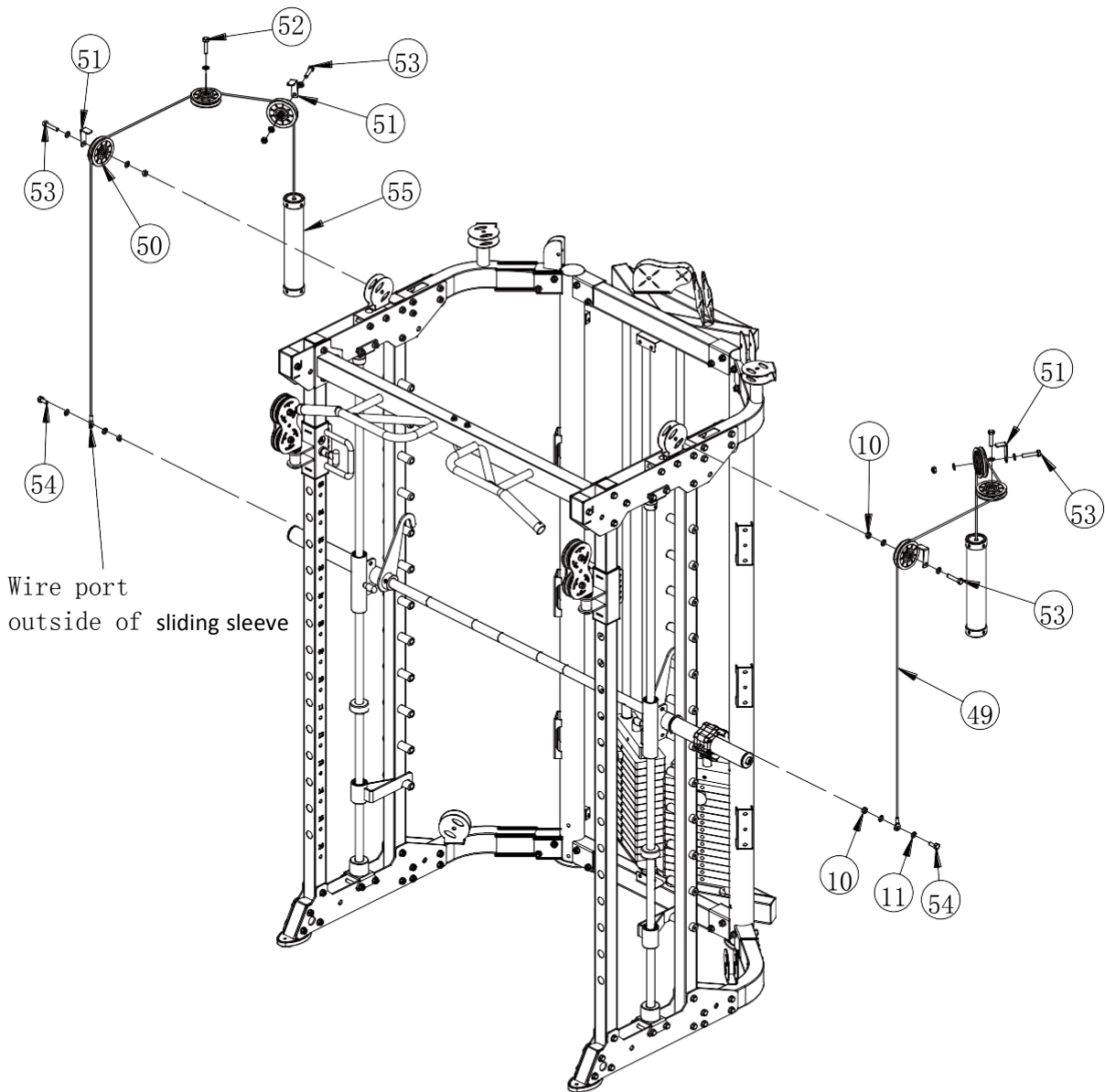
Assembly step (4) drawing



Assembly step (4) assembly instruction

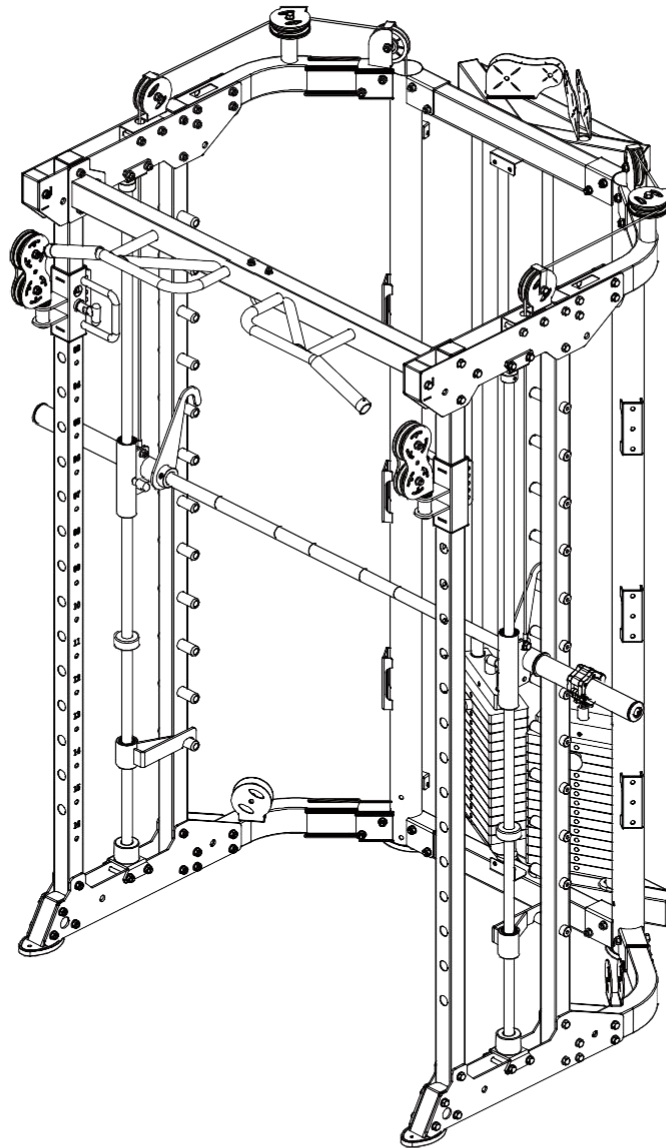
- 1 Fix weight pin-91 fastening on selector rod-90
- 2 Guide rod hollow-45 in turn through rubber pad-44, weight stack-47 and fastening on reinforcing plate-46 using M10x20 hexagon bolt-48, $\Phi 10$ washer-11 and M10 lock nut-10

Assembly step (5) explosion drawing



No.	Description	Note	Qty.
10	lock nut	M10	6
11	washer	Φ10	14
49	wire	Φ5x2745mm	2
50	pulley	Φ95	6
51	pulley plate		4
52	hexagon bolt	M10x45	2
53	hexagon bolt	M10x50	4
54	hexagon bolt	M10x25	2
55	weight		2

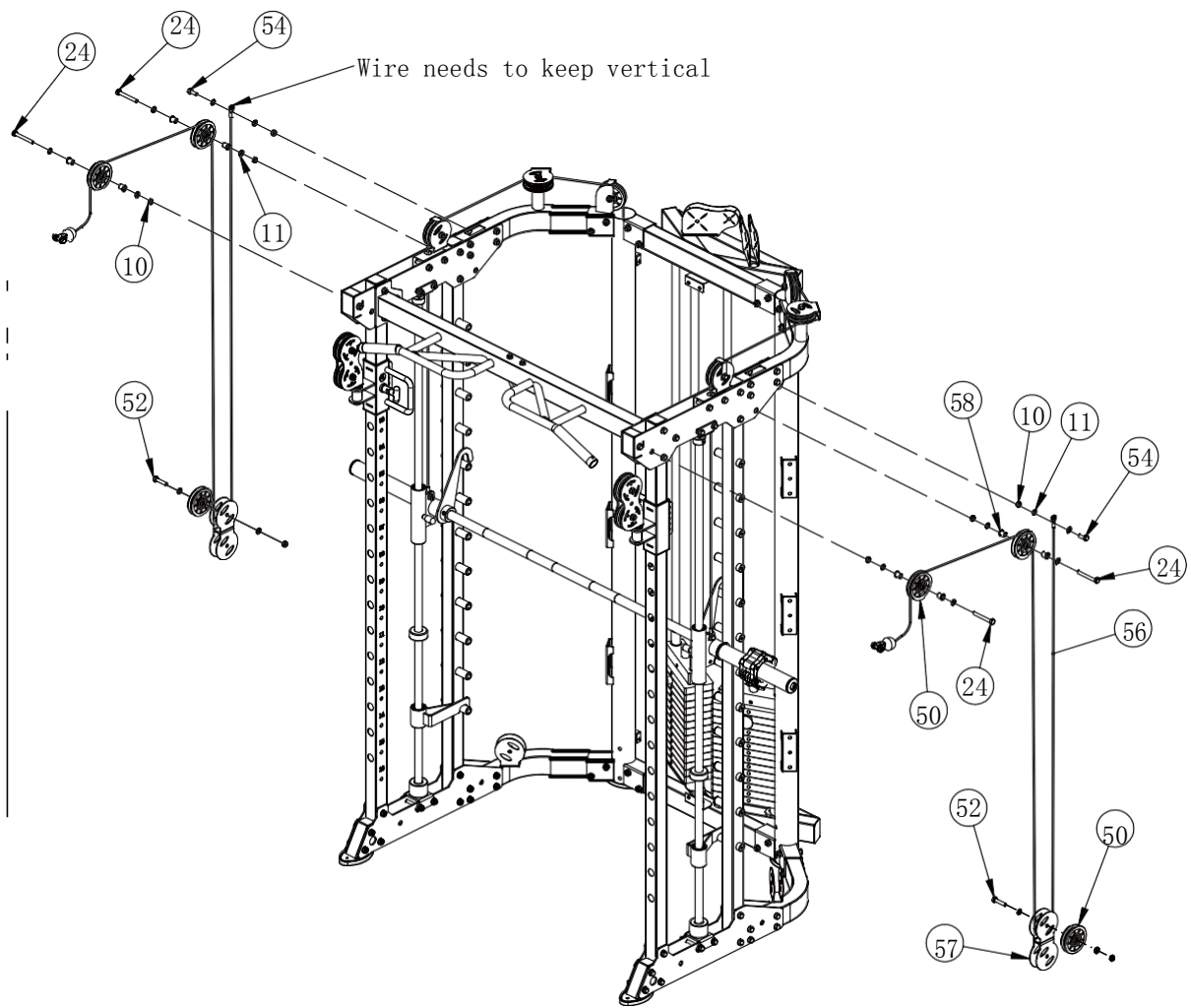
Assembly step (5) drawing



Assembly step (5) assembly instruction

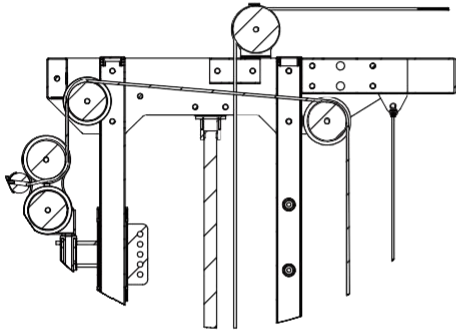
- 1 Connect wire-49 with weight-55, put them into upring frame
- 2 Fix pulley-50 fastening on upper bending tube using M10x50 hexagon bolt-53, pulley plate- 51, $\Phi 10$ washer-11 and M10 lock nut-10
- 3 Fix pulley-50 fastening on upper bending tube using M10x45 hexagon bolt-52, $\Phi 10$ washer-11 and M10 lock nut-10
- 4 Fix wire-49 fastening on sliding sleeve outside using M10x25 hexagon bolt-54, $\Phi 10$ washer-11 and M10 lock nut-10

Assembly step (6) explosion drawing

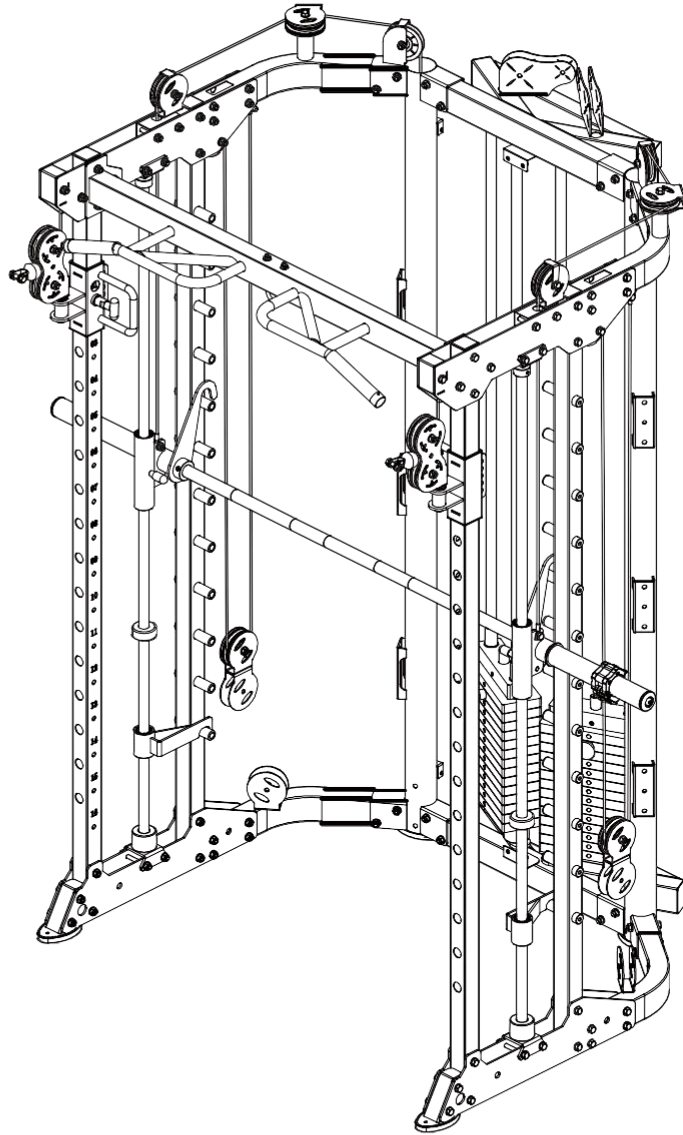


No.	Description	Note	Qty.
10	lock nut	M10	8
11	washer	Φ10	16
24	hexagon bolt	M10x80	4
50	pulley	Φ95	6
52	hexagon bolt	M10x45	2
54	hexagon bolt	M10x25	2
56	wire	Φ5x4095mm	2
57	"-" shape pulley frame		2
58	pulley spacer sleeve	Φ20x10.5xL20.5	8

Assembly step (6) drawing



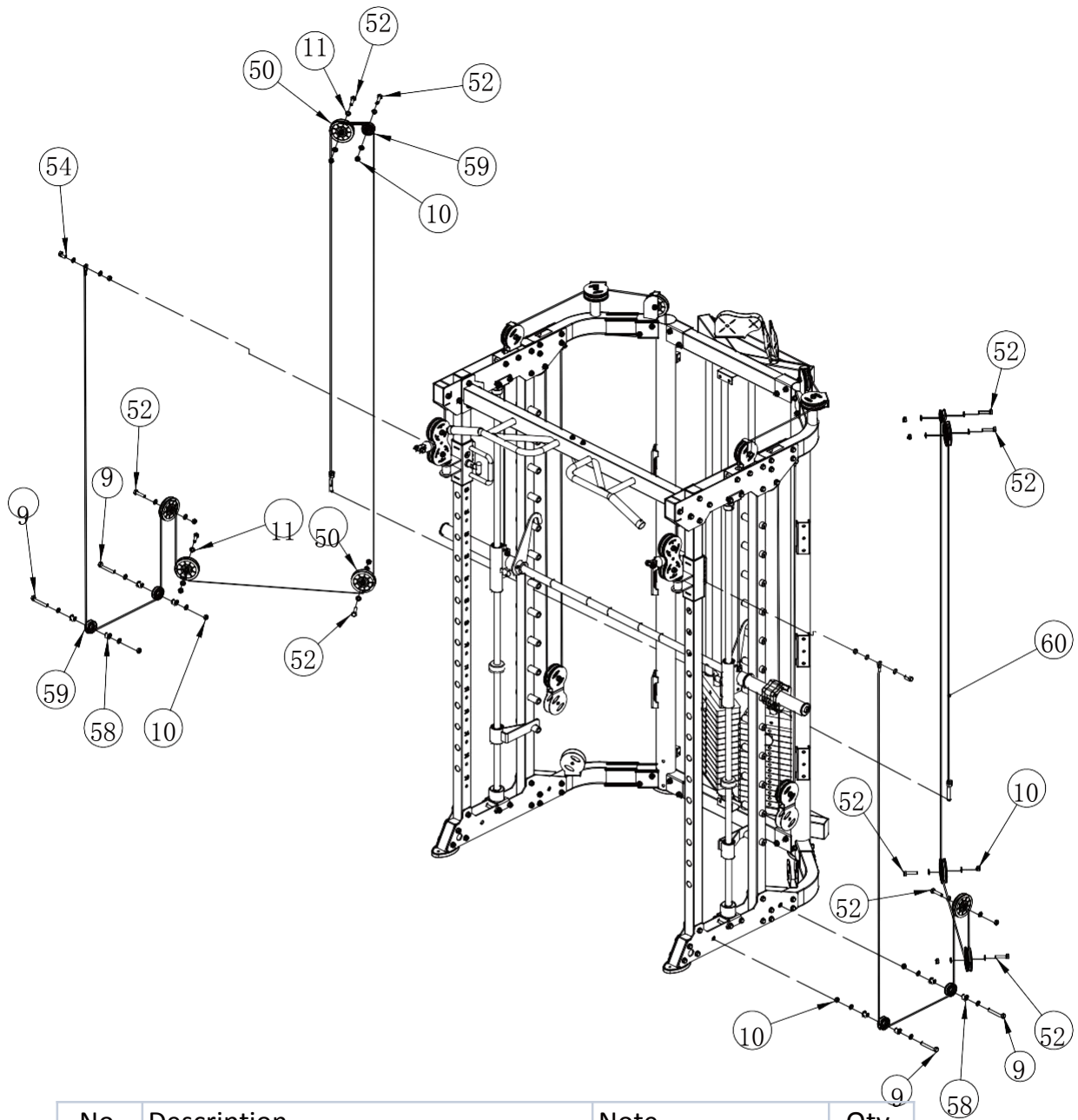
Internal wire schematic



Assembly step (6) assembly instruction

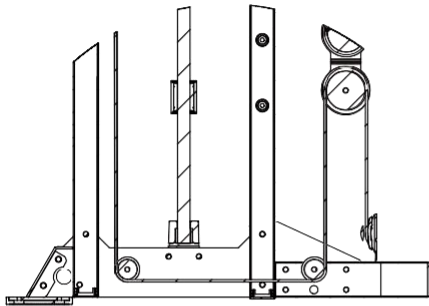
- 1 As the shown in the figure fix pulley-50 fastening on upper plate using M10x80 hexagon bolt-24, $\Phi 10$ washer-11 and M10 lock nut-10 and pulley spacer sleeve-58
- 2 Fix pulley-50 fastening on "—" shape pulley frame-57 using M10x45 hexagon bolt-52, $\Phi 10$ washer-11 and M10 lock nut-10
- 3 As the shown in the figure put the wire-56 using M10x45 hexagon bolt-52, $\Phi 10$ washer-11 and M10 lock nut-10 fastening on bending tube, careful to keep the wire vertical

Assembly step (7) explosion drawing

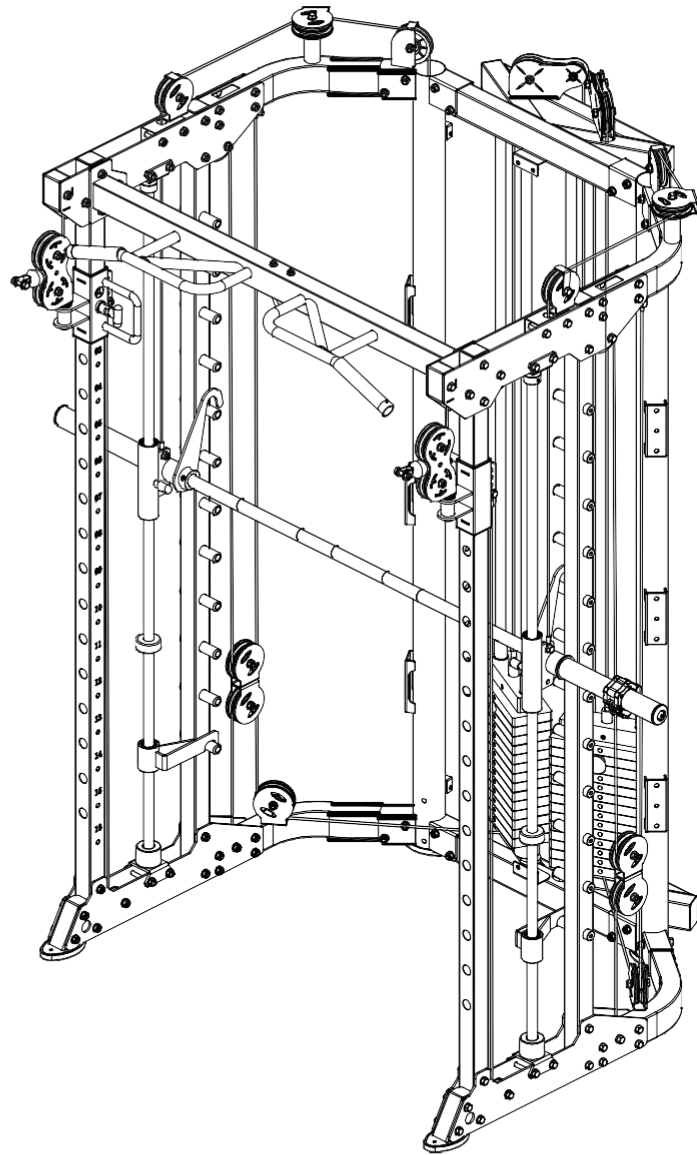


No.	Description	Note	Qty.
24	hexagon bolt	M10x80	4
10	lock nut	M10	16
11	washer	Φ10	32
50	pulley	Φ95	8
52	hexagon bolt	M10x45	10
54	hexagon bolt	M10x25	2
58	pulley spacer sleeve	Φ20x10.5xL20.5	8
59	pulley	Φ50	6
60	wire		2

Assembly step (7) drawing



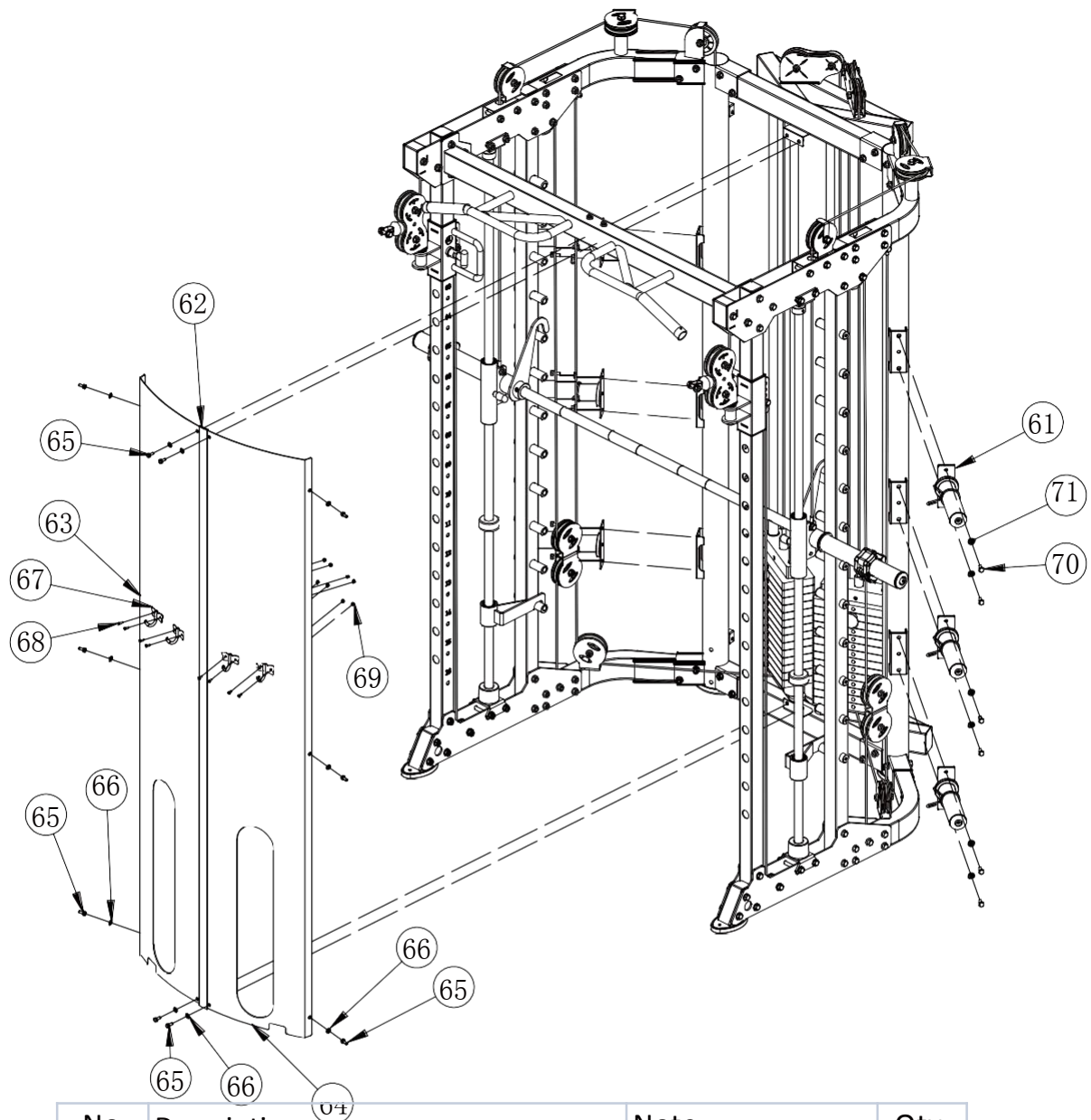
Internal wire schematic



Assembly step (7) assembly instruction

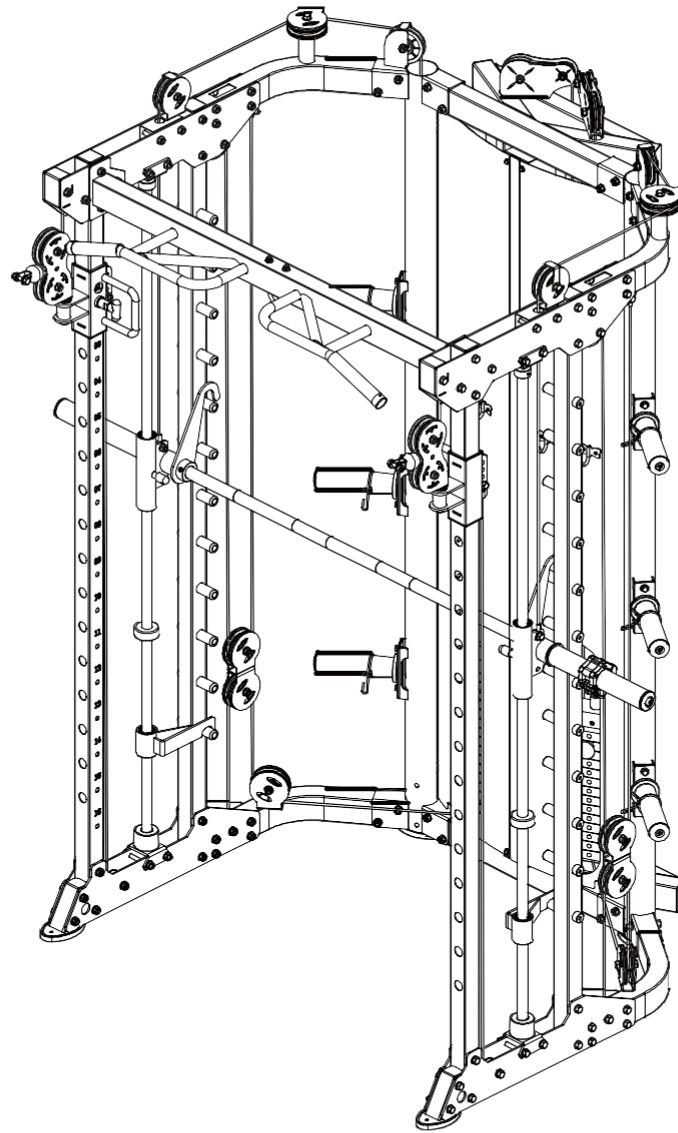
- 1 Fix pulley-50 fastening on "—" shape pulley frame-57 using M10x45 hexagon bolt-52, Φ 10 washer-11 and M10 lock nut-10
- 2 Fix pulley-50 fastening on lower plate using M10x80 hexagon bolt-24, Φ 10 washer-11 and M10 lock nut-10 and pulley spacer sleeve-58
- 3 Fix pulley-50 fastening on lower bending tube using M10x45 hexagon bolt-52, Φ 10 washer-11 and M10 lock nut-10
- 4 As the shown in the figure put the wire-60 on the machine

Assembly step (8) explosion drawing



No.	Description	Note	Qty.
61	barbell plate holder		6
62	connection strap		1
63	shield left		1
64	shield right		1
65	hexagon bolt	M6x16	10
66	washer	Φ6	10
67	hook		4
68	"+"slotted countersunk head bolt	M4x12	8
69	lock nut	M4	8
70	hexagon bolt	M8x20	12
71	washer	Φ8	12

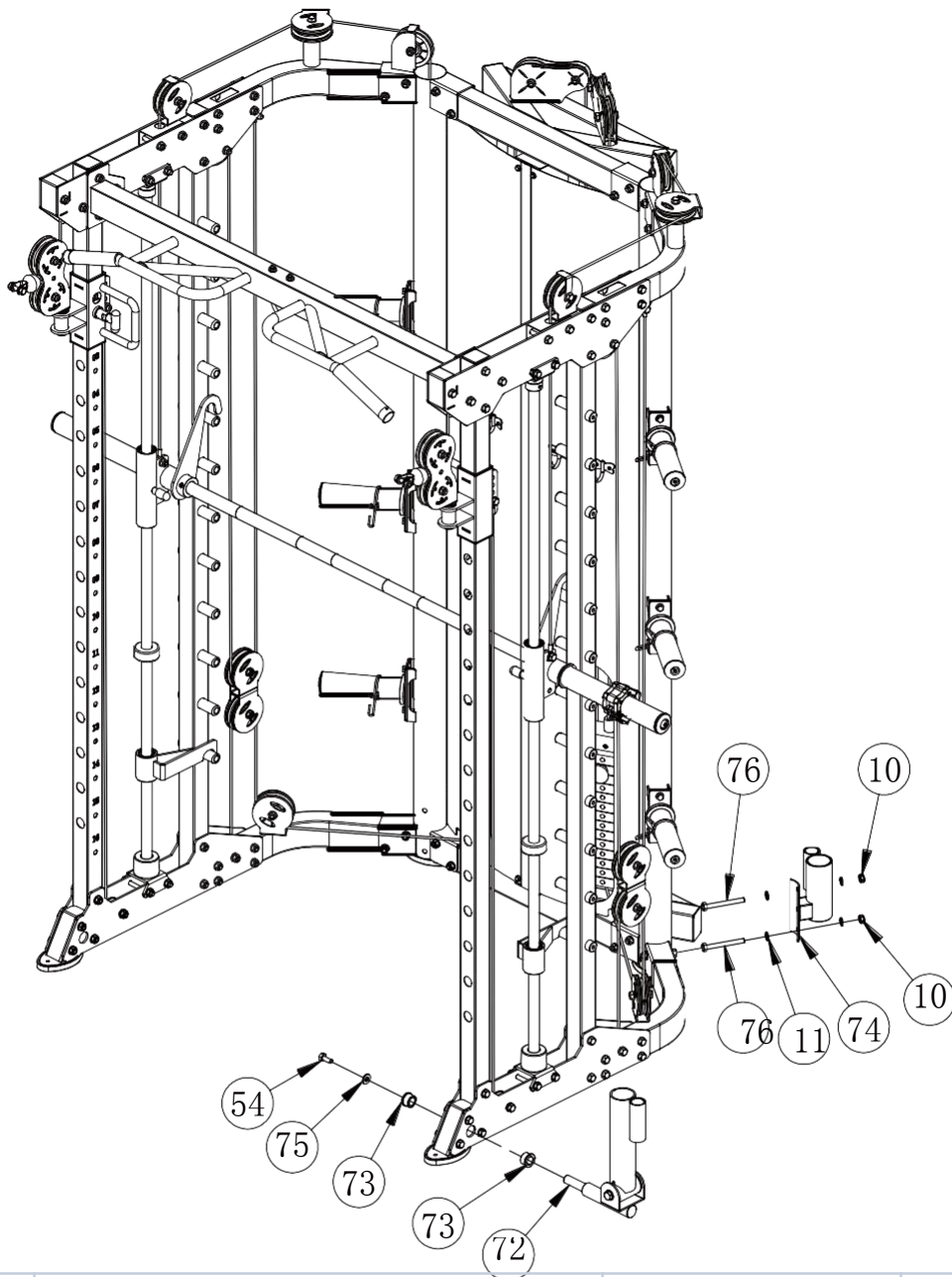
Assembly step (8) drawing



Assembly step (8) assembly instruction

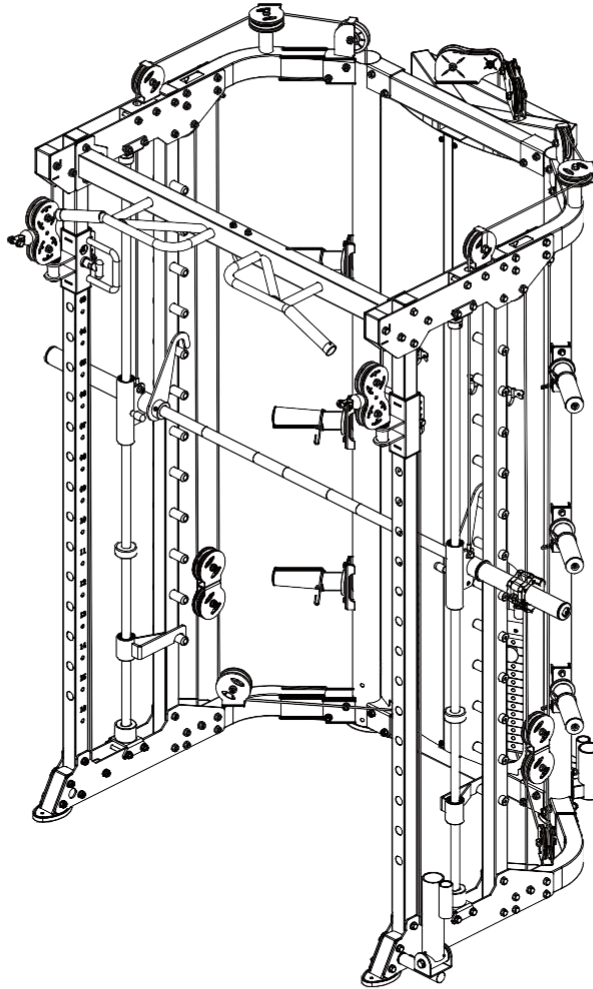
- 1 Connect shield left-63, connection strap-62 and shield right-64
- 2 Fix hook-67 fastening on shield using "+"slotted countersunk head bolt-68 and M4 lock nut-69
- 3 Fix shield fastening on main frame using M6x16 hexagon bolt-65, $\Phi 6$ washer-66
- 4 Fix barbell plate holder-61 on main frame using M8x20 hexagon bolt-70, $\Phi 8$ washer-71

Assembly step (9) explosion drawing



No.	Description	Note	Qty.
10	lock nut	M10	2
11	washer	Φ10	4
54	hexagon bolt	M10x25	1
72	core trainer		1
73	powder metallurgy sleeve		2
74	barbell rod cup		1
75	big washer	Φ25x10x2.0	1
76	hexagon bolt	M10x95	2

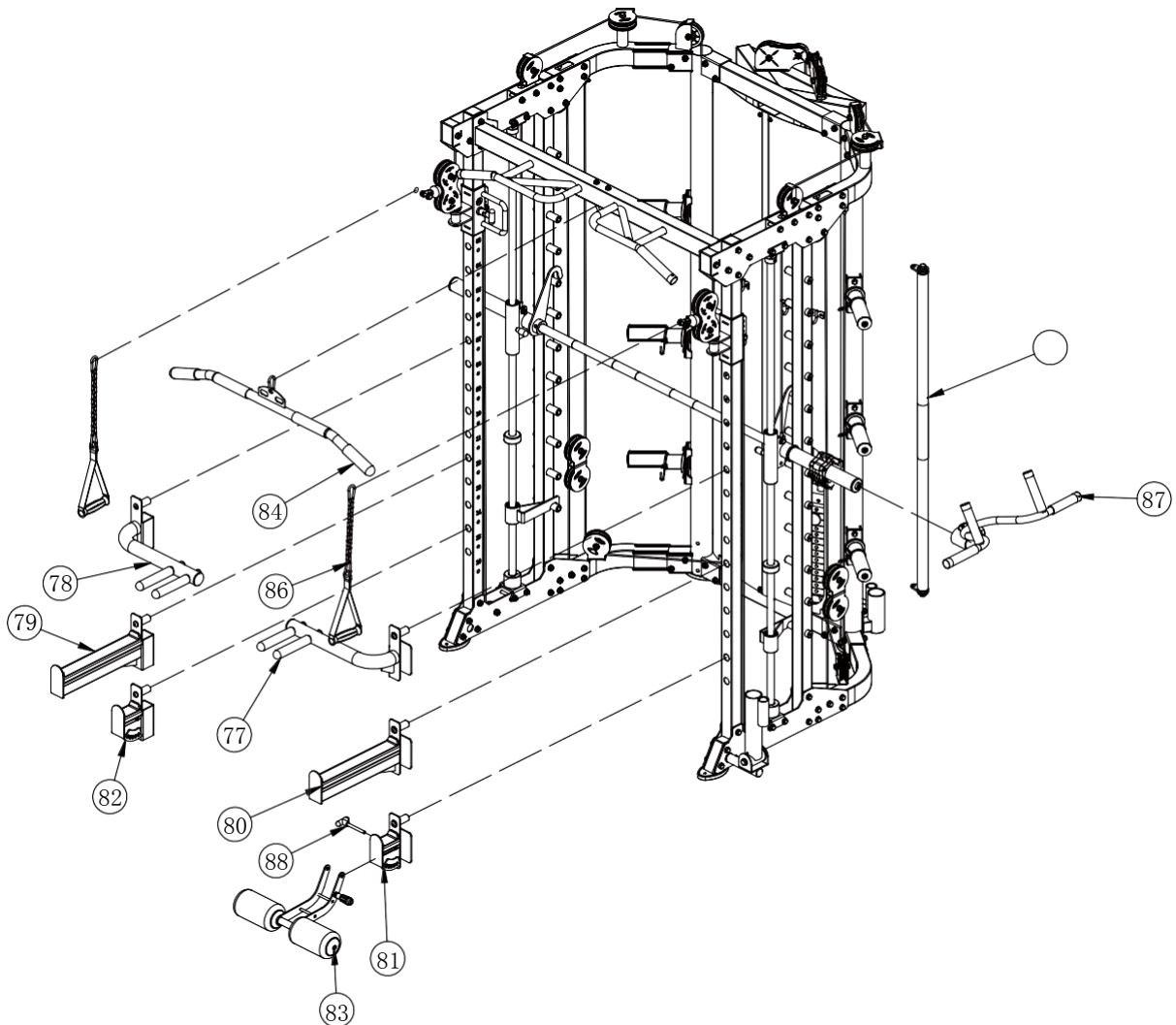
Assembly step (9) drawing



Assembly step (9) assembly instruction

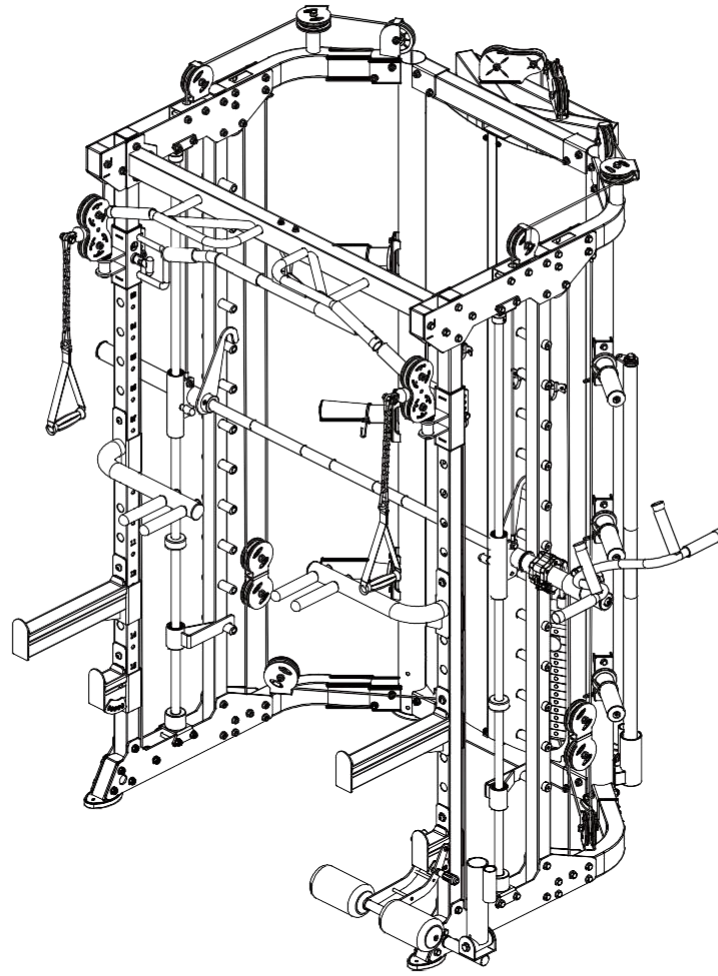
- | | |
|---|---|
| 1 | Fix core trainer-72 fastening on main frame using M10x25 hexagon bolt-54, Φ 10 big washer-75 and powder metallurgy sleeve-73 |
| 2 | Fix barbell rod cup-74 fastening on upright frame using M10x95 hexagon bolt-76, Φ 10 washer-11 and M10 lock nut-10 |

Assembly step (10) explosion drawing



No.	Description	Note	Qty.
77	dip bar left		1
78	dip bar right		1
79	barbell rod holder right		1
80	barbell rod holder left		1
81	barbell rod holder short left		1
82	barbell rod holder short right		1
83	long bar		1
84	ship rod		1
85	hand belt		2
86	pull lift device		1
87	T shape pin	Φ10x100	1
88	leg curl tube		1

Assembly step (10) drawing



Assembly step (10) assembly instruction

- | | |
|---|--|
| 1 | Connect leg curl tube-83 and barbell rod holder short left-81 using T shape pin-88 |
| 2 | Put the attached part on the machine |

Items Not Covered

This warranty does not apply to any failure of the product, or any parts of the product, due to alterations, Modifications, misuse, abuse, negligence, accident, incorrect assembly or improper maintenance. Faults as result of installation by NNI Fitness staff must be reported within 7 days, as do concerns, questions aroused during or after installation by customer. Failure to follow warning in the owners manual, or warning stickers placed on equipment may result in injury to person and equipment and substantially void your warranty. Normal wear and tear due to use, transport, exposure to air and radiation, material fatigue is not covered.

Maintenance tips

Enclosed in your user manual. For products that do not come with a service card, please refer to below general advice or contact NNI Fitness service department for more specific advices.

All NNI Fitness products are designed and produced for indoor usage-do not place them outdoor or expose them to weather.

Always inspect parts of safety concern prior to exercise, eg. Steel cable, handle bar, foot pedal, chains and bands etc. Repair or replace any damaged or worn parts as early as possible so to avoid injury.

As part of NNI's normal installation and set-up process, all bolts must be tightened and checked after the first 1 to 2 hours of initial usage and then periodically. Loose bolts and nuts may come off, causing damage, which may void warranty and can cause potential danger to the user as well.

After training, always wipe down your NNI machine. Perspiration that continuously settles on the frame and pads may cause rust or damage to the unit. Damage resulting from lack of proper maintenance will not be covered under warranty. To clean upholstery and frame, use a mild soap and warm water. Dry with a clean towel.