

ANAVRin

# 1940'S TRAIN CABIN DIY BOOK NOOK

INSTRUCTIONS



## Essential Information

---

**Part number:** Find the part with the corresponding number in this step to assemble. Always take reference to the parts number as shown in this guide. There will be parts that are of the same shape and size which are numbered the same throughout the guide and on the plywood sheet itself.

**Extra parts:** Sometimes you will find a few spare parts after completing the assembly process and you wonder if you are missing a few steps? Do not worry as these parts are often extra parts in case you break the parts upon assembling. In some cases, we may also add a few extra decorative parts that you can choose to attach anywhere you deem fit.

**Glue:** We cannot include glue in our DIY kit due to shipping restrictions as it is a no-fly item. However, we do highly recommend using Elmer's All Multi Purpose Glue or Gorilla Super Glue which you can easily purchase from bookstores and handicraft stores. Not all parts require glue, most of the parts can be assembled together by slotting it into the designated fixture. Only apply glue at the steps that are marked with this symbol.

**Power supply:** The model's standard power supply is 5V - DC equivalent to 3 x AA Batteries in series. You can replace the battery with similar power supplies (5V - DC) as long as it fits into the model's 5.5mm x 2.1mm socket. Batteries are not included in our kit due to shipping restrictions as it is a no-fly item.

**Tools:** The kit has been designed with you in mind, no additional tools will be required as it comes with everything you need. However, if you like to fasten the process with specific tools, you can include: paper cutter, scissors, paint (if you like to customize the kit).

**Handmade:** Some of the parts are hand crafted by our team members. Although we always try to make it as meticulous as possible, sometimes there may still be human errors hence, please forgive us for the mistake. On the other hand, it can be viewed as a one-of-a-kind or unique piece.

**Mechanical parts:** If some of the parts has rough edges, you can choose to smooth it with sandpaper. Alternatively, you can also add your own lubricating oil if required. These additional steps may be required if the mechanical motor gears are not rotating properly. (**Note:** Sandpaper and oil are not included in the kit.)

**Bonding activity:** Invite your friends or family to join, the assembly may take hours hence, it's a great way to spend time together and create fond memories.

## Before Assembly

---



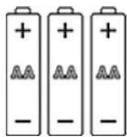
**Part number:** Find the part with the corresponding number in this step to assemble. The same parts with the same number are usually next to each other in the board. The same parts with the same functions are numbered only once in the assembly instructions. The numbers are either sequentially numbered or accompanied by a leading letter, which is the symbol of each board (e.g part A9 of board A).



**Extra Parts:** Sometimes you will find a few spare parts after completing the assembly process and you wonder if you are missing a few steps? Don't worry these parts are often extra parts in case you break the parts when assembling. Or in some cases we add a few extra decorative parts that you can optionally attach it to anywhere you like.



**Glue:** We cannot include glue in the package because glue is a no-fly item. You can easily search for the glue you need with the keywords "miniature glue" "wood glue" "synthetic glue" or "siliglu". Not all parts need to be glued together, most of them can be assembled together accurately and securely without glue. Apply glue at the steps marked with this symbol.



**Power supply:** The model's standard power supply is 5V - DC equivalent to 3 AA batteries in series. You can replace the battery with similar power supplies (5V - DC) as long as it fits into the model's 5.5 x 2.1 (mm) socket. Batteries are also no-fly items so we cannot send them.



**Tools:** The kit is designed so that you can assemble it without preparing any tools. However, to make the assembly process easier and faster, we suggest you prepare some tools such as: Paper cutter, scissors, paint and paintbrush...Yes, you can paint them.

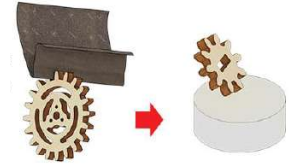


**Handcrafted:** Some of the parts are hand crafted by us. Although we always try to make them as meticulous as possible, sometimes there are errors. Please consider it to be the necessary error of a handcrafted product. Sometimes they create unique versions that only you have.

## Before Assembly



**Mechanical parts:** If some of the parts has rough edges, you can choose to smooth it with sandpaper. Alternatively, you can also add your own lubricating oil if required. These additional steps may be required if the mechanical motor gears are not rotating properly. (**Note:** Sandpaper and oil are not included in the kit.)



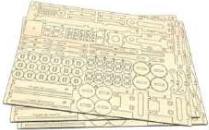










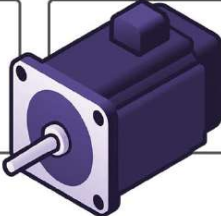
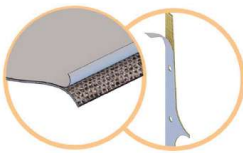
**More friends more fun:** Invite friends or family to join, the assembly takes hours, this is the time for you to make more memories together.



- Sharp points, choking hazard, not for children under 3 years old.
- Display in a place away from direct light and water.
- Please do not turn on the lights for more than 12 hours continuously.
- Please supply the correct power to the model



# Packing List

 <p><b>Wooden part sheets:</b> 10 part sheets (A - I+)</p>	 <p><b>Rubber band:</b> Increase friction for the rotating shaft.</p>
 <p><b>Leather part sheets:</b> 6 part sheets (J - O)</p>	 <p><b>Wire Connect Kit:</b> Connecting the lighting wires</p>
 <p><b>Metal part sheets:</b> 4 part sheets (1 - 4)</p>	 <p><b>LED light coil:</b> Pre-wired LED coil</p>
 <p><b>Window glass:</b> 11 transparent plastic parts</p>	 <p><b>3 X AA Battery holder:</b> Pre-wired battery holder.</p>
 <p><b>Magnet:</b> 8 x 1cm . diameter round magnet</p>	 <p><b>Paper roll and picture:</b> Included on a paper.</p>
 <p><b>Rubber band:</b> Create elasticity</p>	 <p><b>Motor:</b> Pre-wired 5 - 9V DC motor</p>
 <p><b>Pre-glued:</b> Leather and metal sheet have been pre-glued. Please peel off the protective paper and stick them according to the assembly instructions. Pre-glued only works to make it easier to assemble, it may not be strong enough to withhold the pieces together, please apply more glue when necessary.</p>	

## Symbols

---



**Glue required:** Use wood glue and super glue to attach the parts in this step. Make sure all the parts are aligned, facing the correct direction before applying glue. We would recommend using Elmer's All Purpose Glue and Gorilla Super Glue.

---



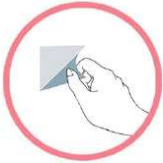
**Completed step:** This means once the step has been assembled as shown, move onto the next step.

---

**60**

**Part number:** This states the specific part number to use for each individual step. The same parts will have the same number.

---

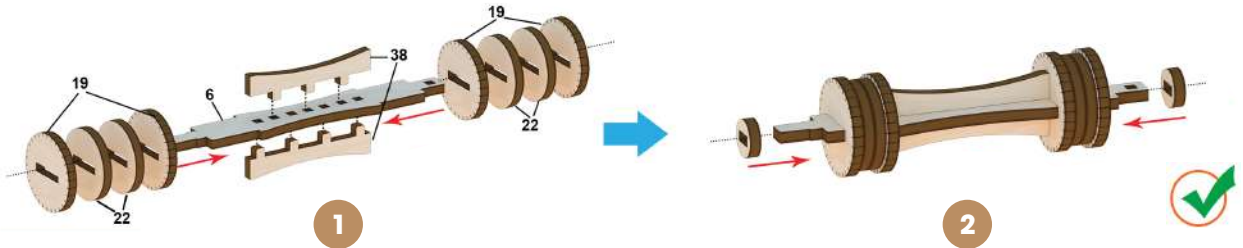


**Peel to paste:** This part is pre-glued, please peel off the protective layer to stick in accordance to the instructions.

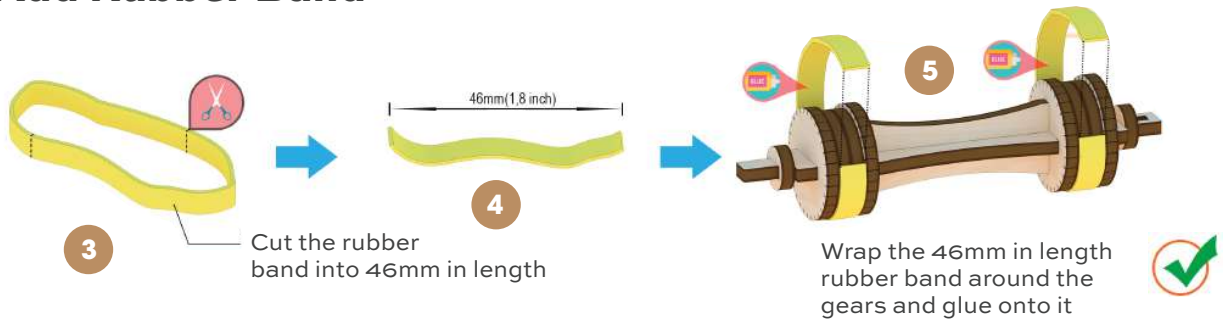
---

01

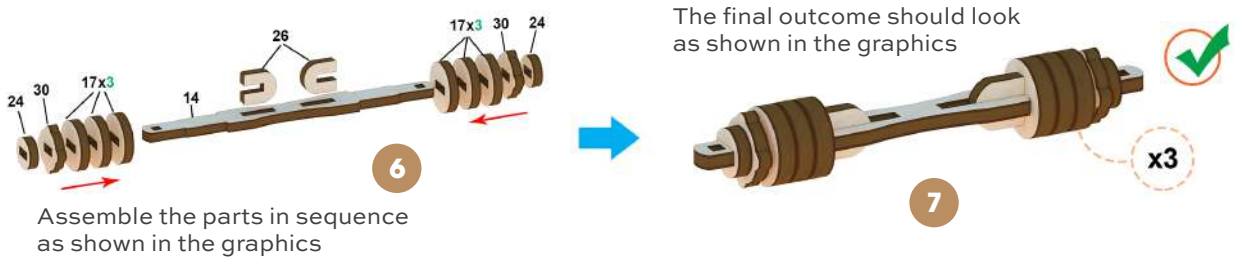
### Main Gear Spindle



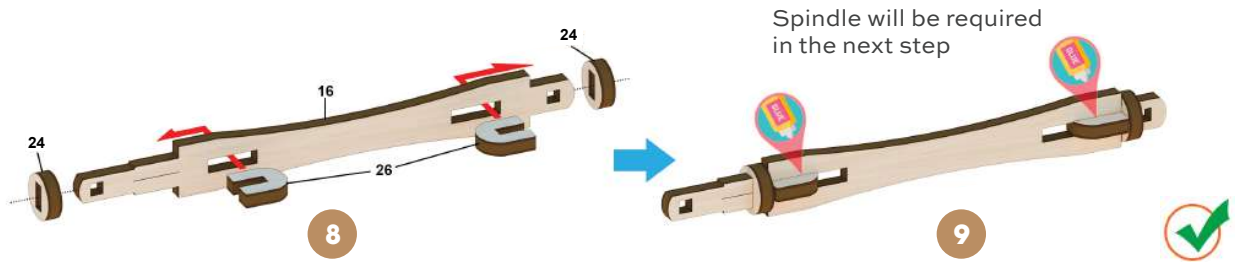
### Add Rubber Band



### 3 Spindles

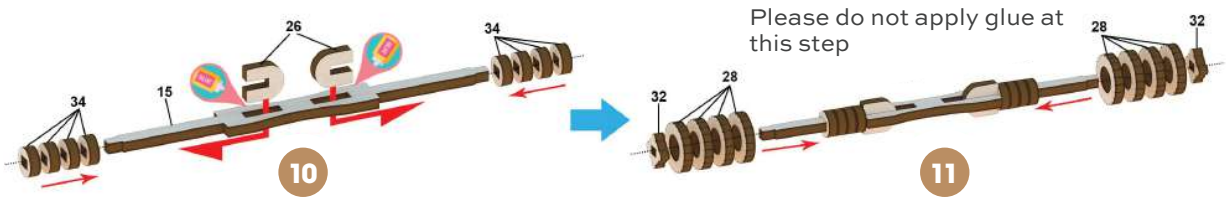


### Secondary Gear Spindle

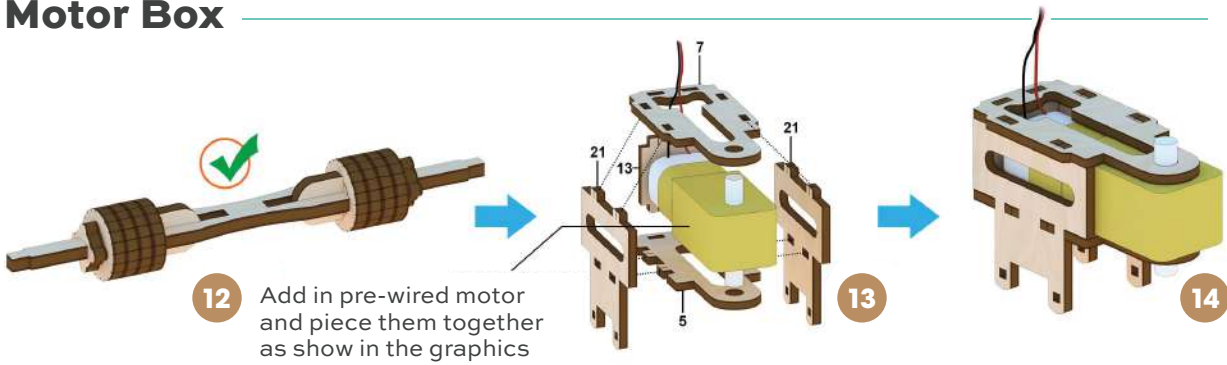


02

Spindle

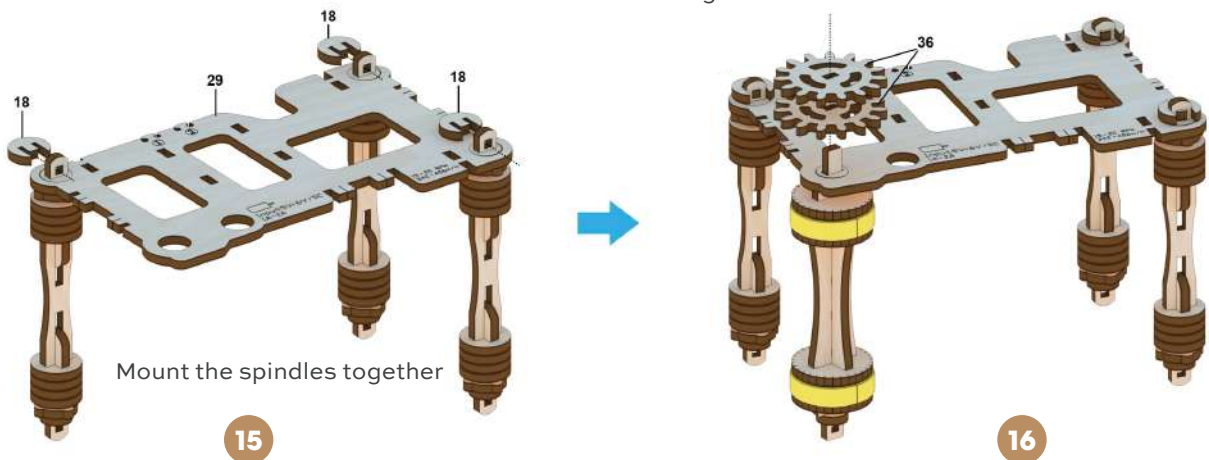


Motor Box



Mount The Spindles

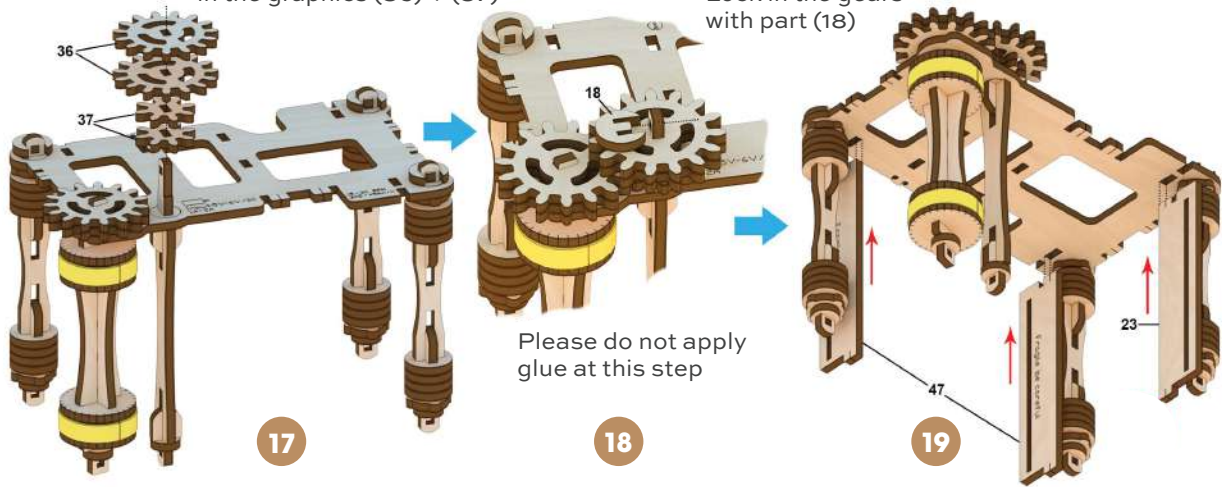
Please ensure both of the gears are aligned correctly, with the same slots against the other.



03

### Add Gears

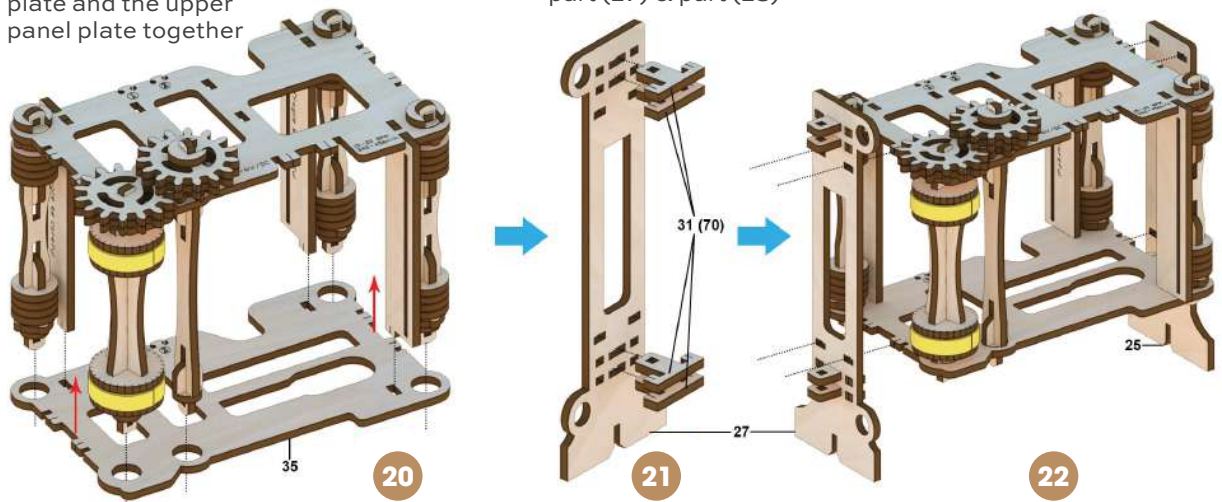
Please ensure both of the gears are aligned as shown in the graphics (36) + (37)



### Fix Spindles Location

Connect the lower panel plate and the upper panel plate together

Connect the 2 panels with part (27) & part (25)





04

**Adding The Motor**

**23** Connect the spindles with part (18)

**24** Add gears (37) onto the motor as shown in the graphics

Connect and place the motor onto the structure built in Step 22

**25**

**26** Lock the motor with part (18) as shown in the graphics

**Fix Motor Location & Assemble Spindle**

Connect the part from Step 12 onto the structure as shown in the graphics

**27**

Step 12 part

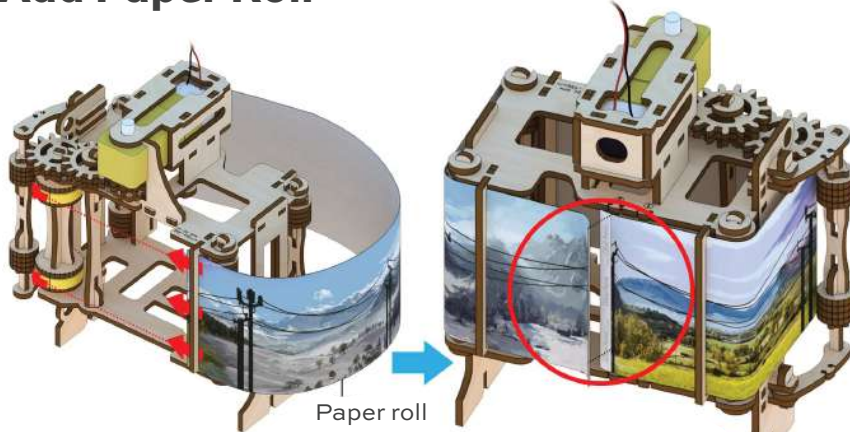
**28**

**29**



05

Add Paper Roll



**30** Slot in the film roll into the openings of part (47) from Step 23. Loop it into a circular direction as shown in the graphics.

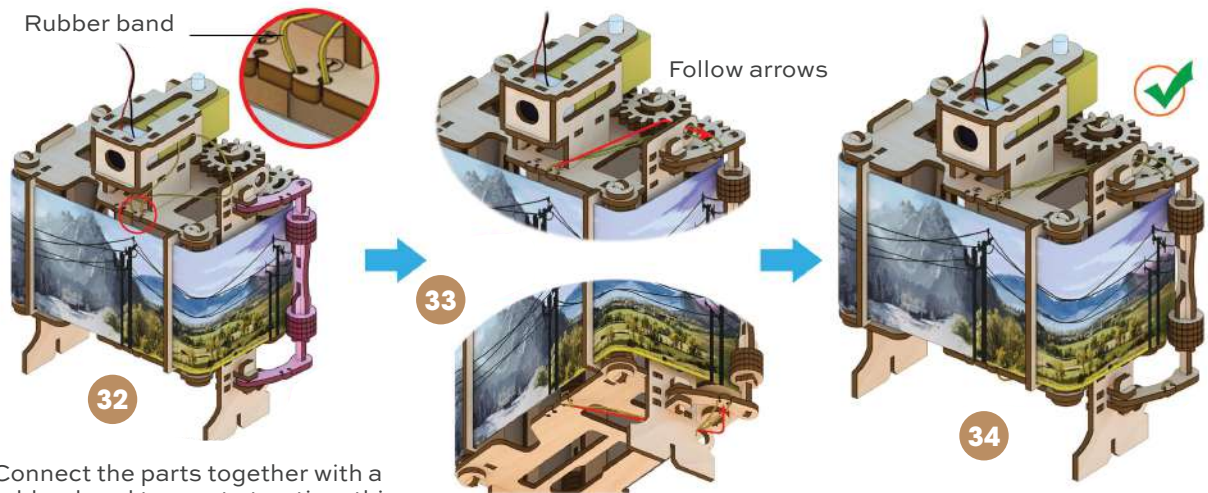
Connect both ends of the film roll into a loop with either paper glue or double-sided tape

**31**



Neatly attaching the edges of the paper with no excess is needed for the roll to spin smoothly during operation

Add Rubber Band



Rubber band

Follow arrows

**32**

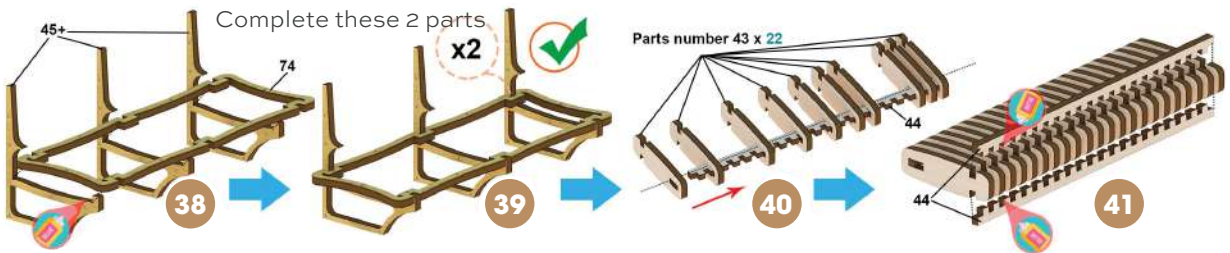
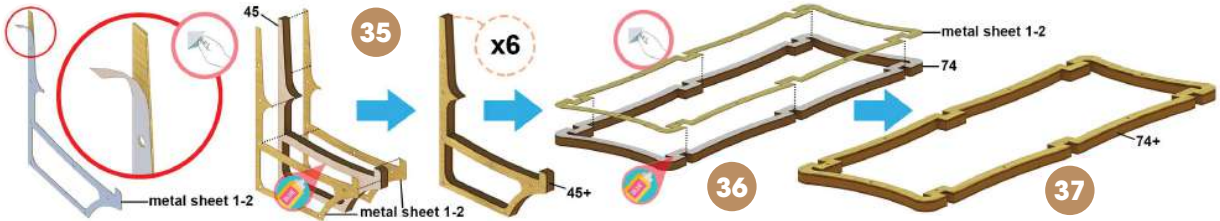
**33**

**34**

Connect the parts together with a rubber band to create traction, this will help to ensure the film roll is always clammed between the 2 spindles. Please follow the arrows as shown in the graphics from Step 33-35.

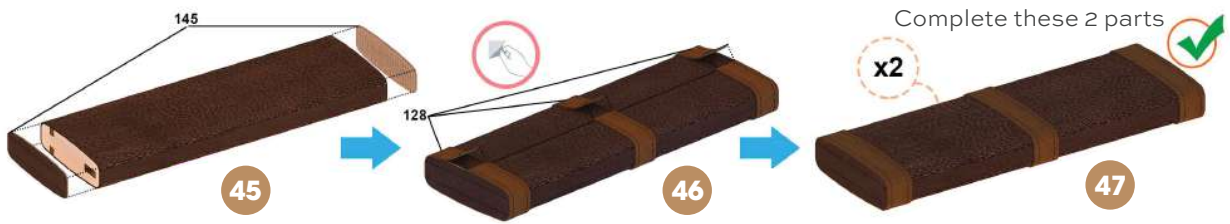
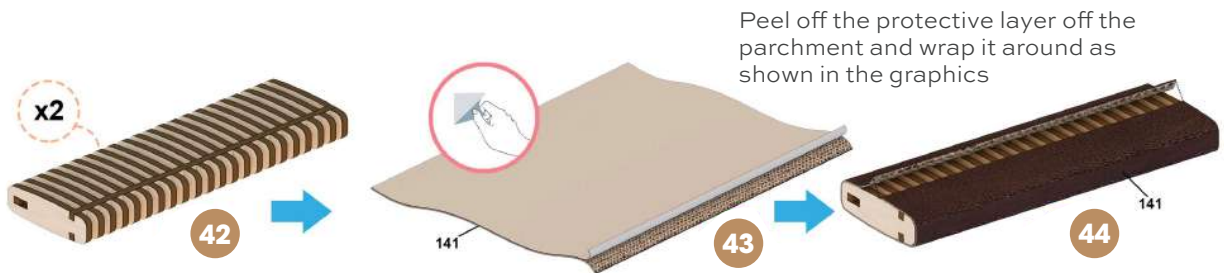
06

## Two Leather Seat Legs



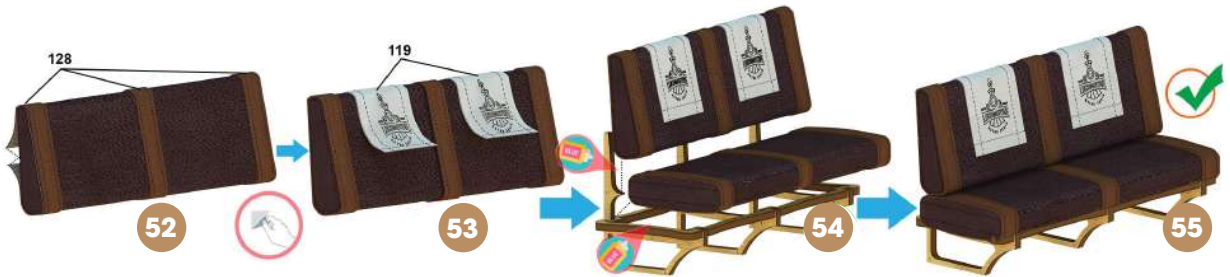
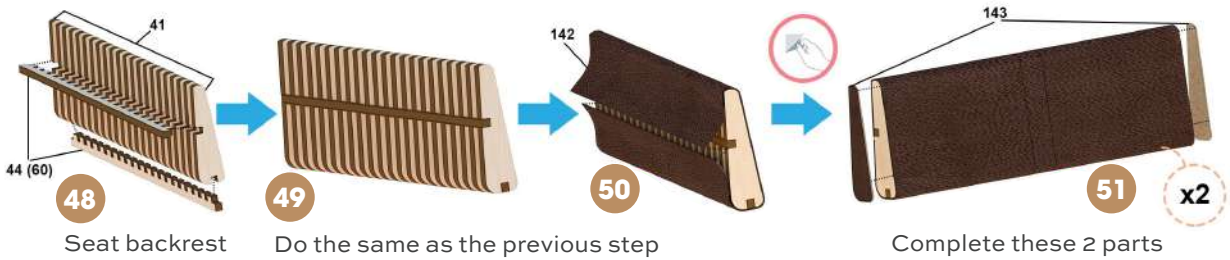
Neatly attaching the edges of the paper with no excess is needed for the roll to spin smoothly during operation

## Two Leather Seat Bodies

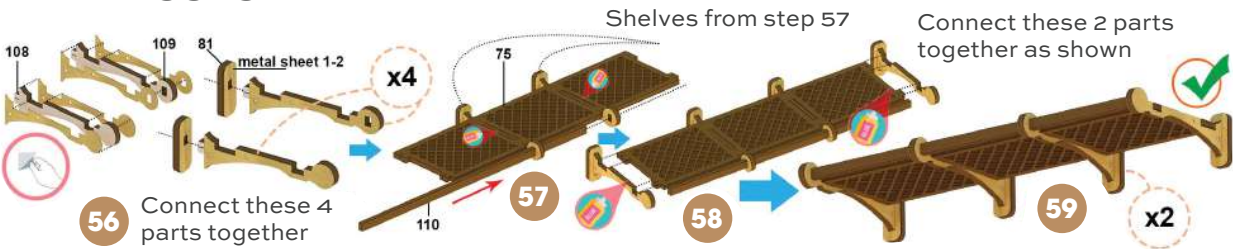


07

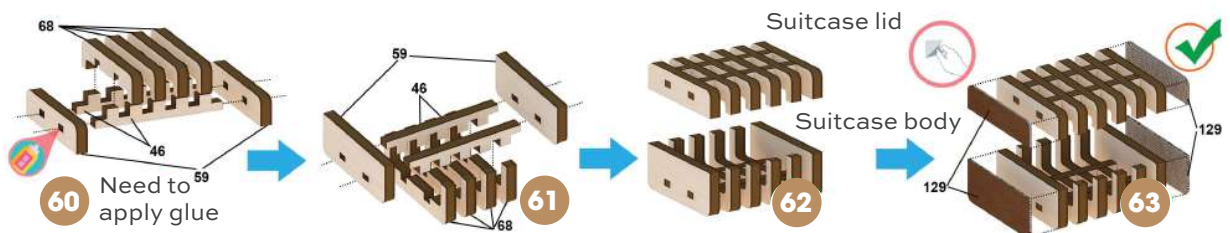
## Two Leather Seats



## Two Luggage Racks

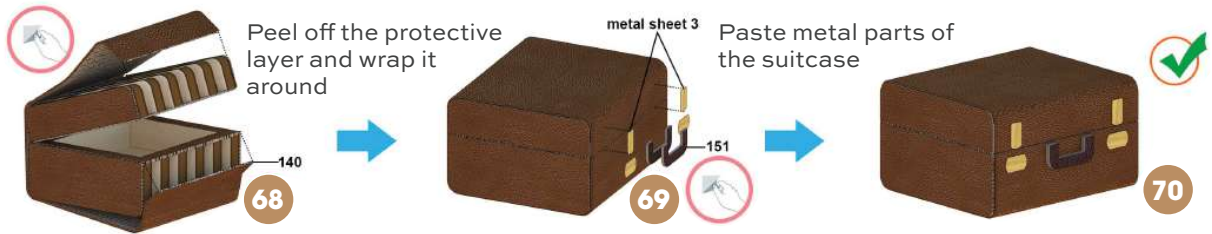
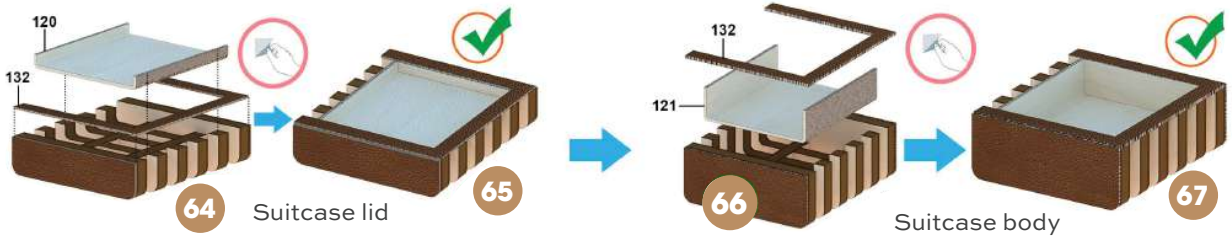


## Suitcase 1

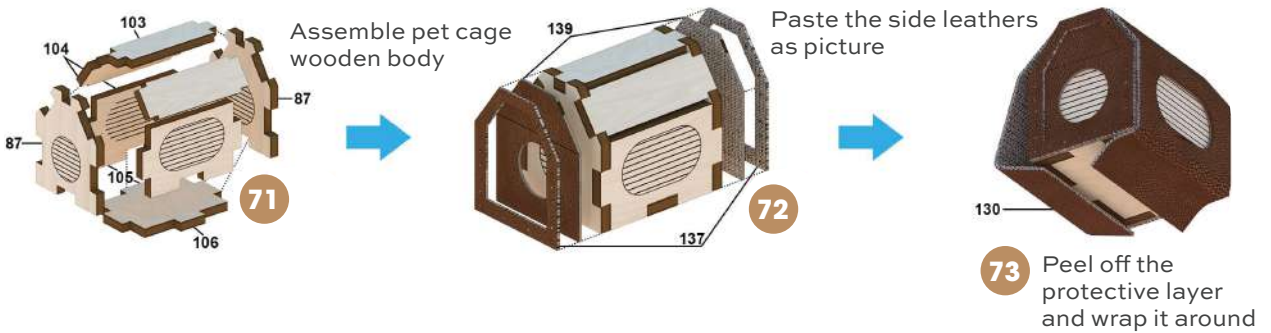




## Suitcase 1

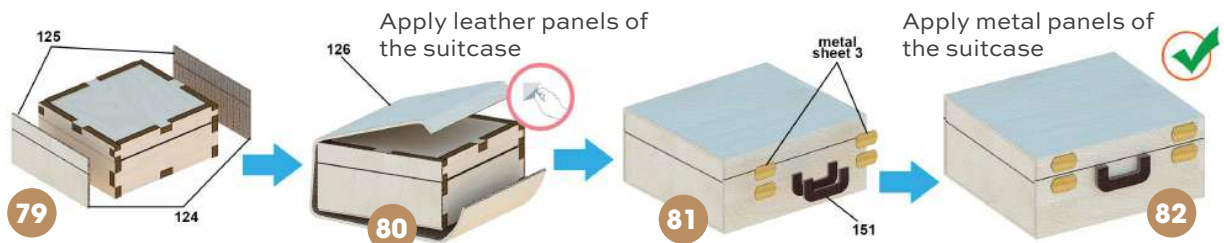
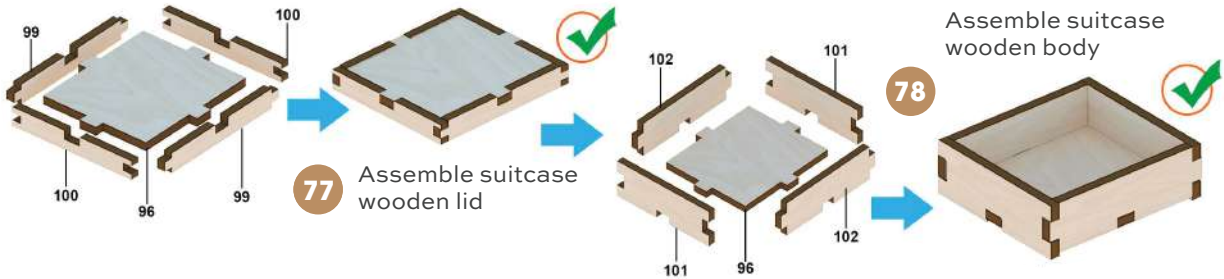


## Pet Cage



09

Suitcase 2



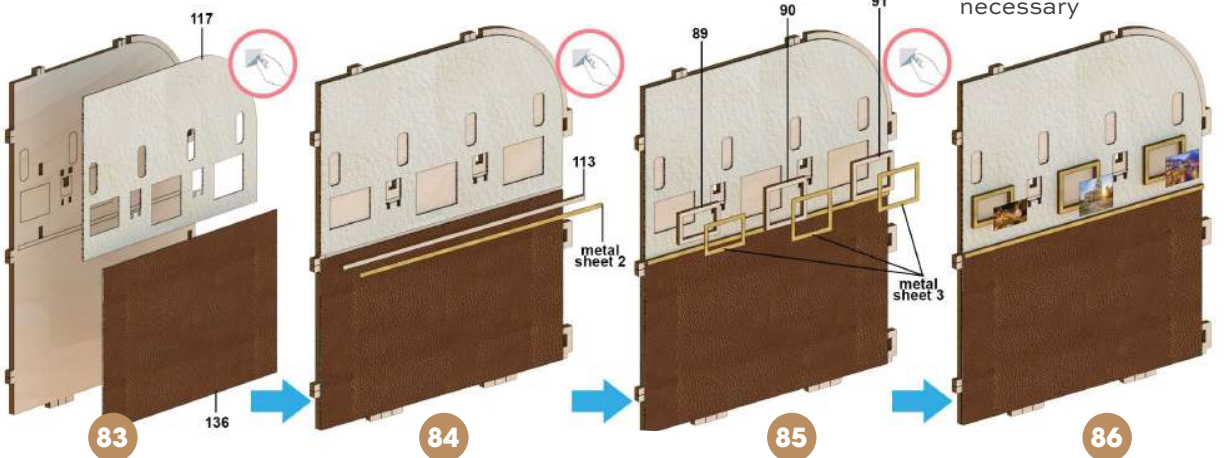
Cabin Wall Panels

Apply leather panels of the cabin wall panels

Adding crossbars and metal plates

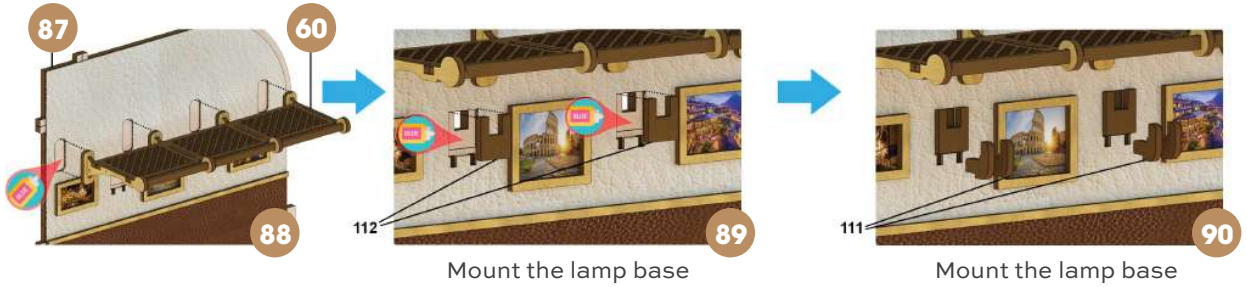
Adding picture frames and metal plates

Cut the pictures out and paste it on the photo frame, use glue if necessary

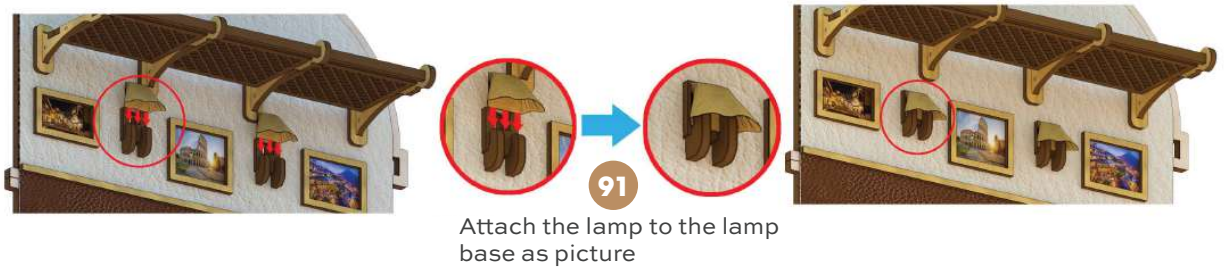
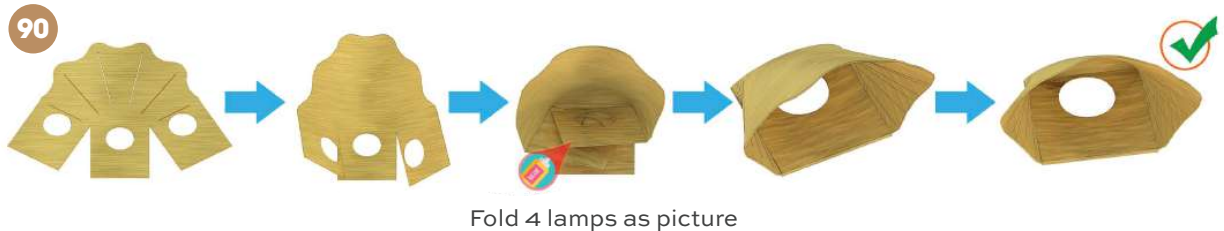


10

### Add Luggage Rack & Lamp Base To The Wall



### Add Wall Lights



### Finish Left & Right Cabin Walls

Attach part (72) to the back of the cabin wall



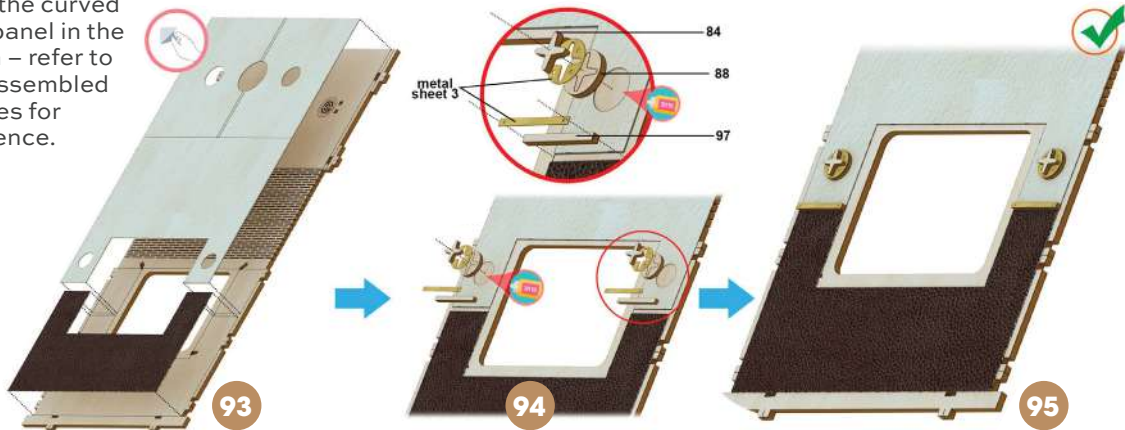
Do the same with the other wall. Both walls are completely symmetrical, you can change the wall paintings so that the pictures on both sides are different.



11

### Cabin Curved Wall

Paste the leather onto the curved wall panel in the cabin – refer to the assembled images for reference.

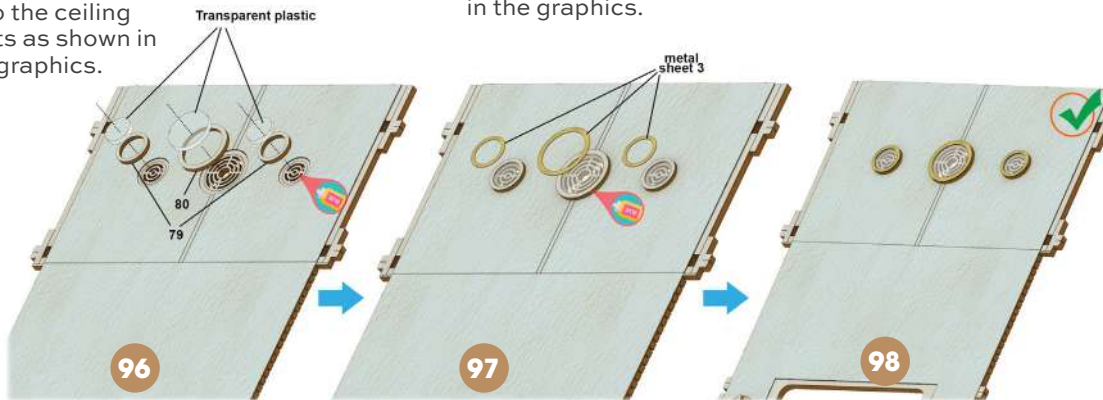


Assemble the parts as shown in the graphics and please use glue for this step.

### Ceiling Lights

Glue part (79), part (80) and transparent plastic onto the ceiling lights as shown in the graphics.

Overlay metal sheet 3 onto the ceiling lights as shown in the graphics.



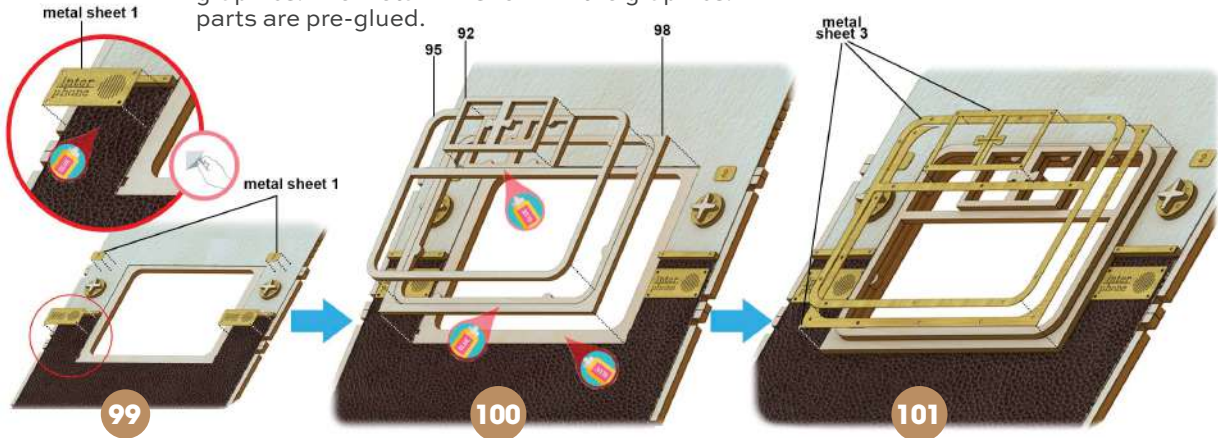
12

## Interphone & Window Frame

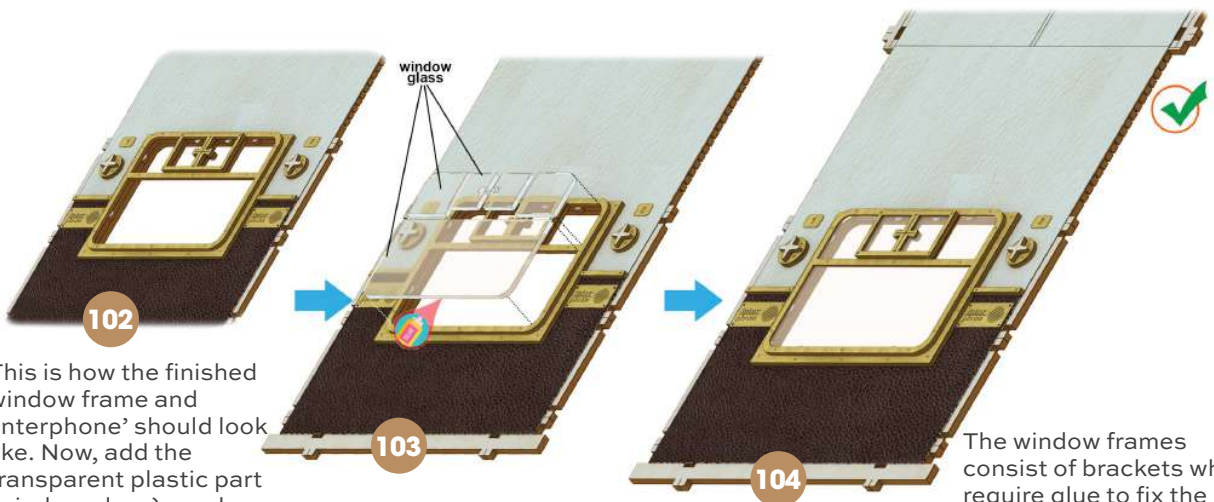
Mount metal parts onto the wall panels as shown in the graphics. The metal parts are pre-glued.

Attach all the wooden window frame parts (98) & (95) & (92) together as shown in the graphics.

Overlay metal frame sheet 3 onto the window. The metal frame sheet 3 is pre-glued.



## Window Glass



This is how the finished window frame and 'interphone' should look like. Now, add the transparent plastic part (window glass), apply glue along the edges to make it stick.

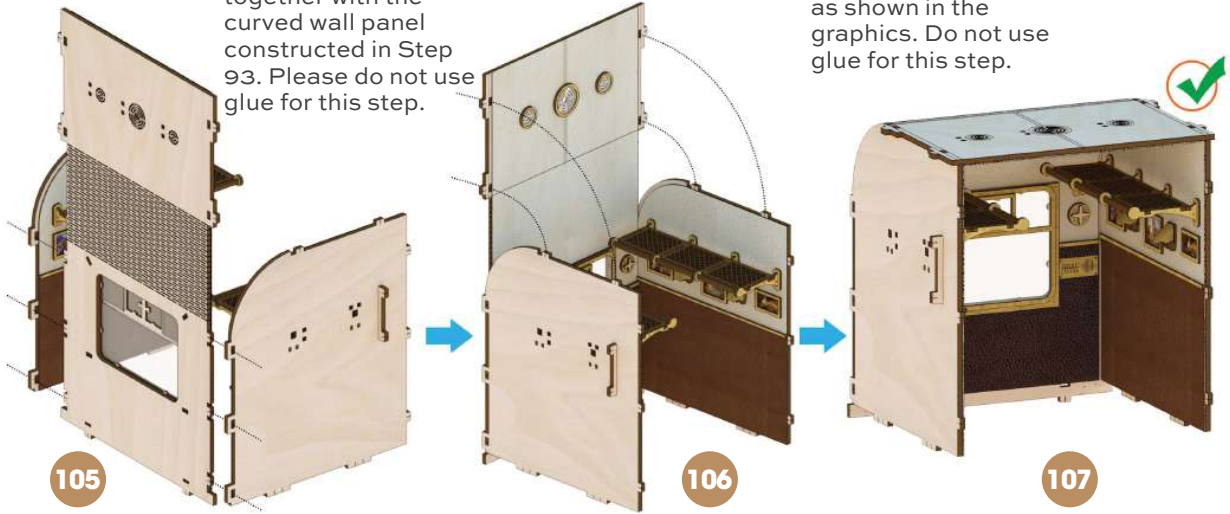
The window frames consist of brackets which require glue to fix the glass panels. Apply the glue carefully so as to not contaminate the glass.

13

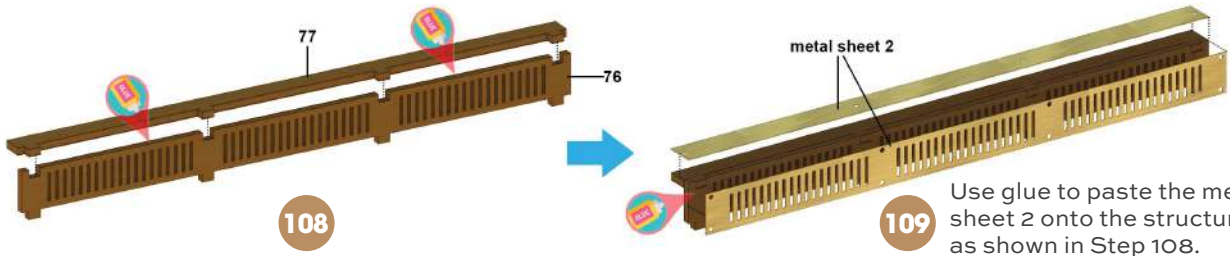
### Assemble Cabin Walls

Connect both walls together with the curved wall panel constructed in Step 93. Please do not use glue for this step.

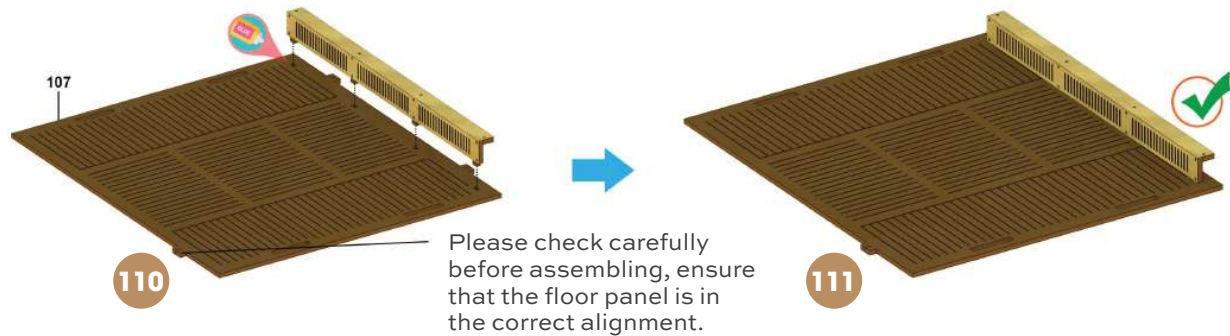
Bend the curved wall as shown in the graphics. Do not use glue for this step.



### Cabin Floor



Use glue to paste the metal sheet 2 onto the structure as shown in Step 108.



Please check carefully before assembling, ensure that the floor panel is in the correct alignment.



14

### Assemble Cabin Floor & Seats

**112** Please check carefully and ensure the floor panel is not upside down

**113** Apply glue onto the side, back and the metal frames of the leather seat and Insert them into the cabin to make it stick.

**114**

### Assemble Table

**115** Assemble table leg

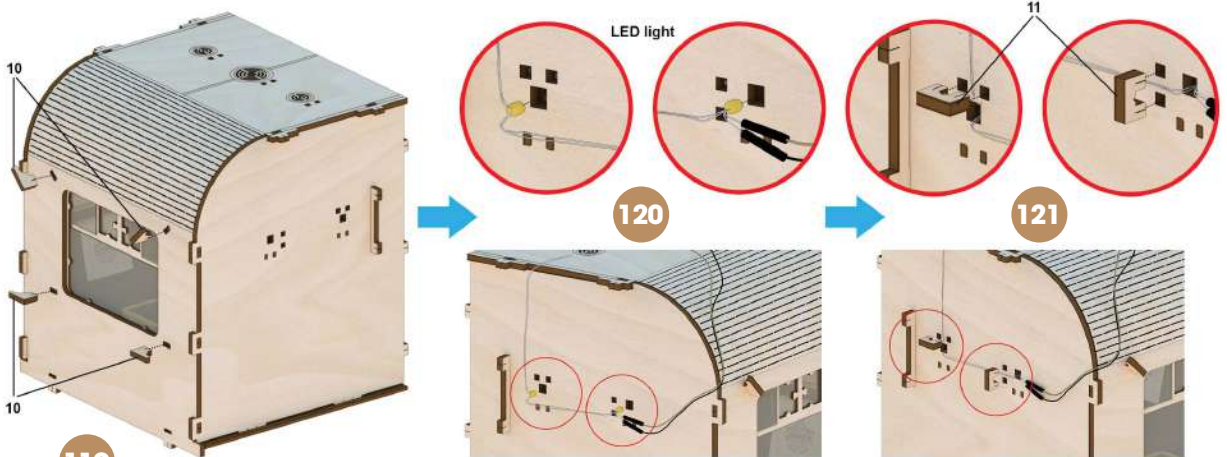
**116** Cover the edge of the table with sheet metal on metal sheet 2

**117** Use glue to place the table

**118**

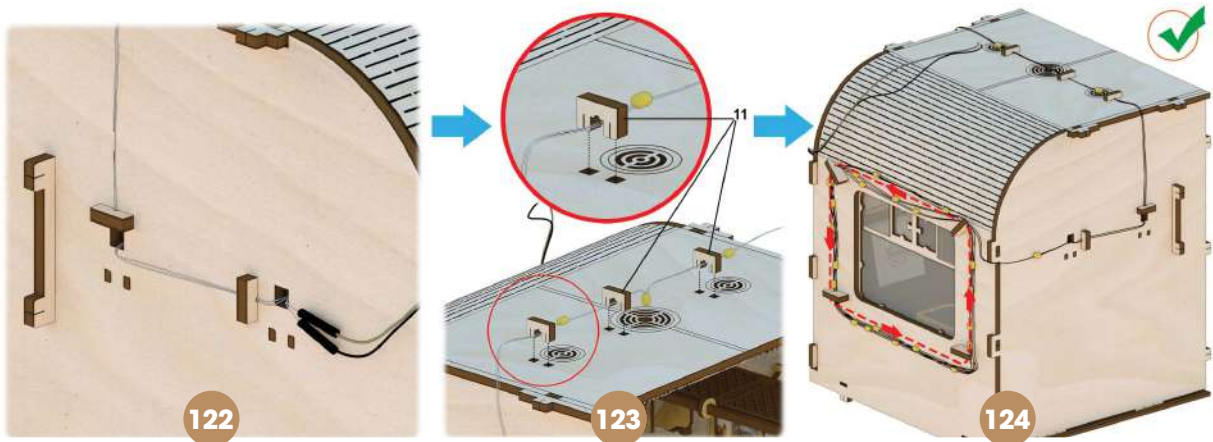
15

### Add LED Lights On Right Wall



Add LED lights follow the picture Use part (11) to hold the lighting wires instead of glue

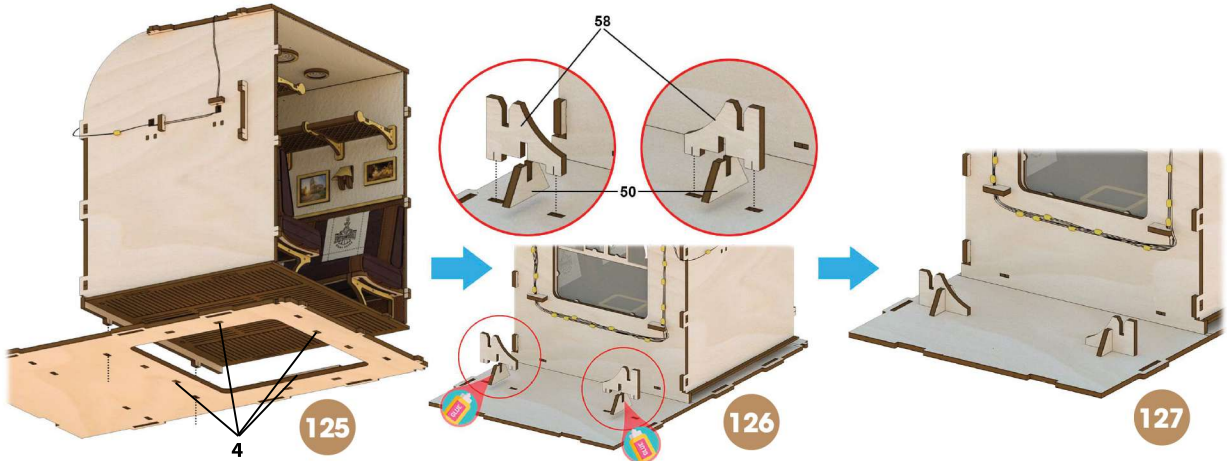
### Add LED Lights On Top



Add LED lights follow the picture Follow the fixtures as shown in the graphics and use part (11) when necessary to hold the wires in place. Follow the direction of the wire fixture as shown in the red dotted lines and red arrows direction.

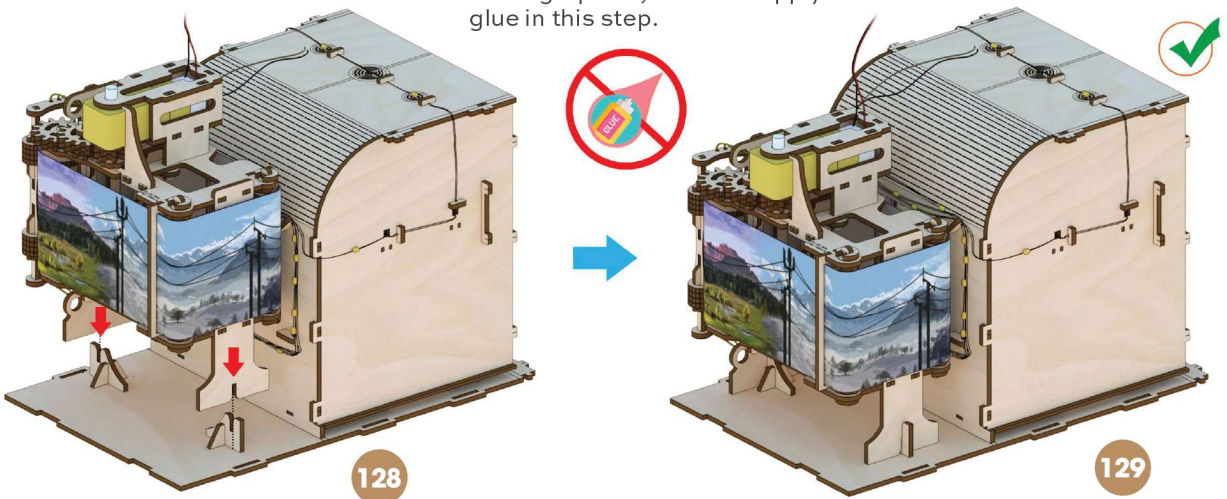
16

### Assemble Paper Roller Base



### Assemble Paper Roller

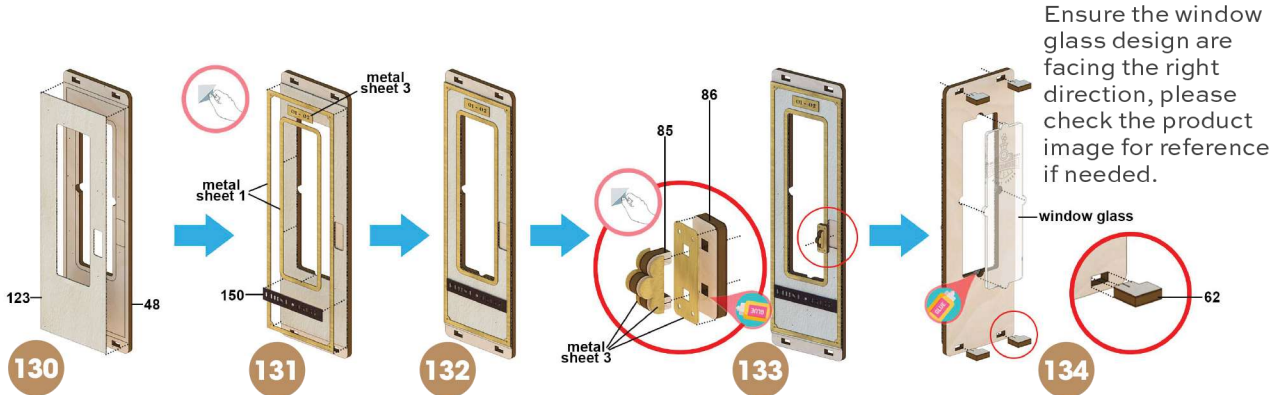
Slot in the paper roller as shown in the graphics, DO NOT apply glue in this step.



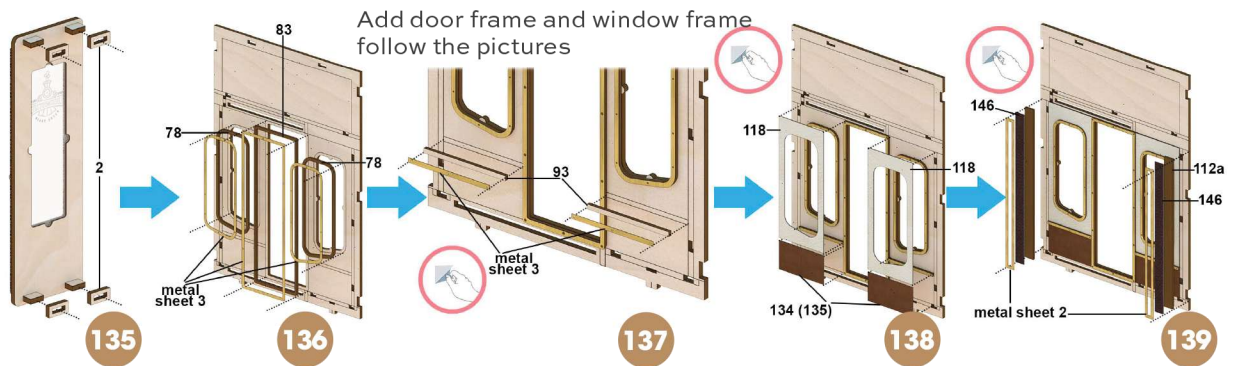


17

### Assemble The Door

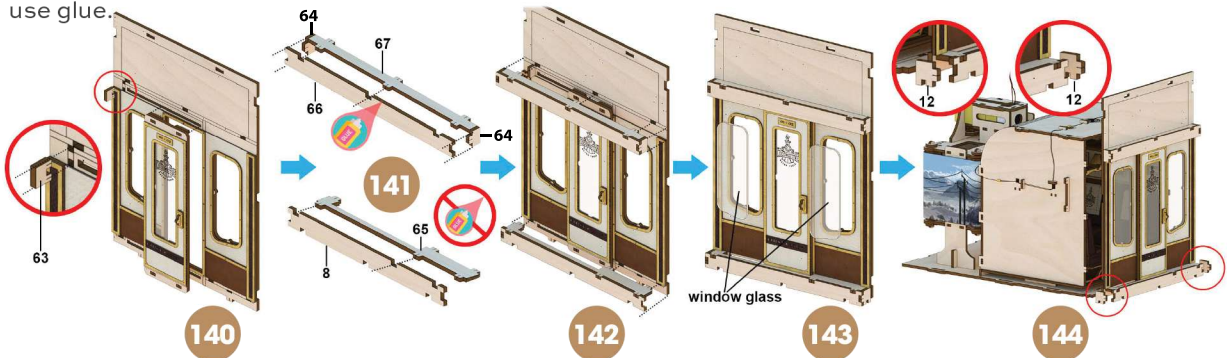


### Door Frame & Front Leather



### Assemble The Front Parts

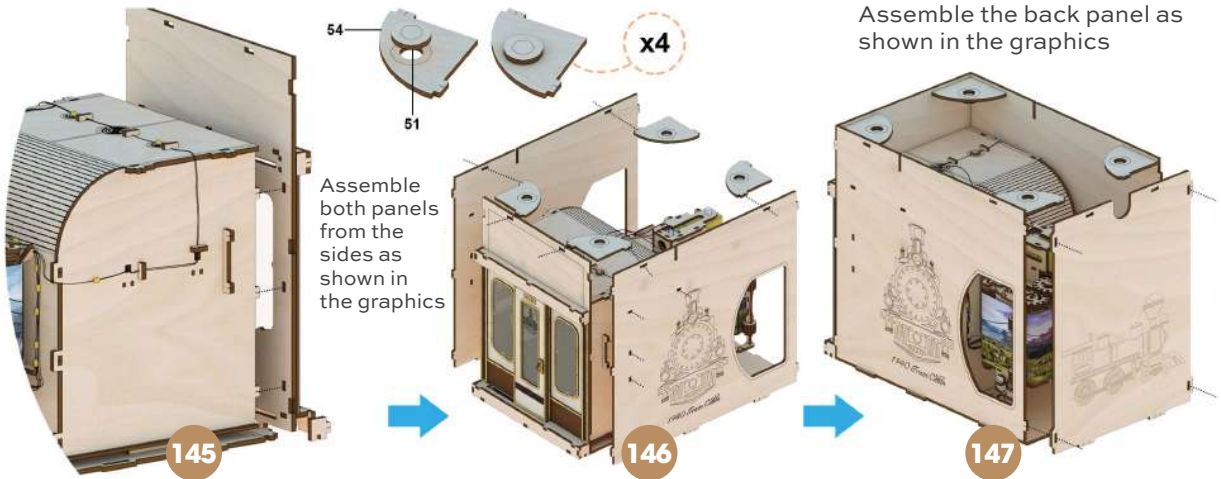
Assemble the sliding door to the front with part (63) in it. **DO NOT** use glue.



18

### Left, Right & Back Cover Panels

Assemble the front panel with the attached doors onto the cabin as shown in graphics

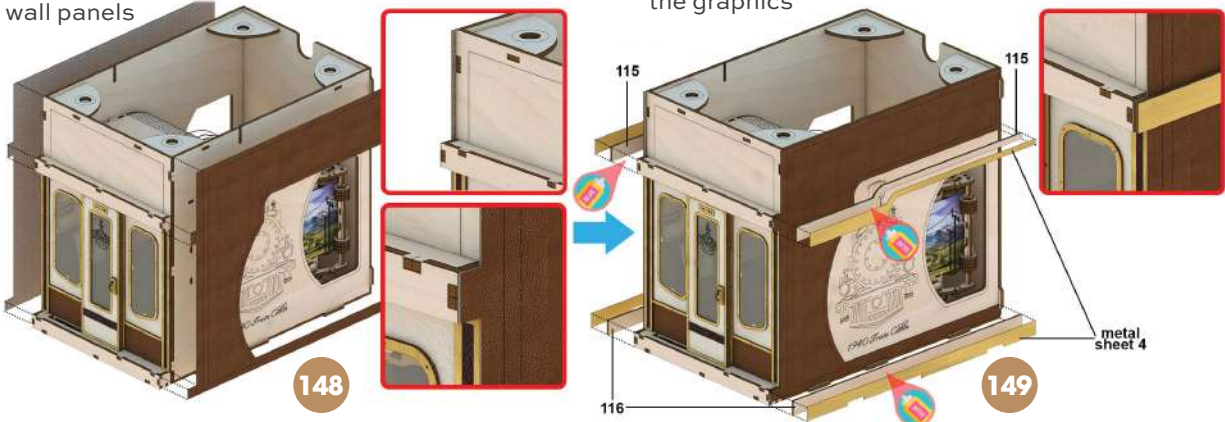


Assemble the back panel as shown in the graphics

### Left, Right Panels Leather

Peel and paste the leather layer on both sides of the wall panels

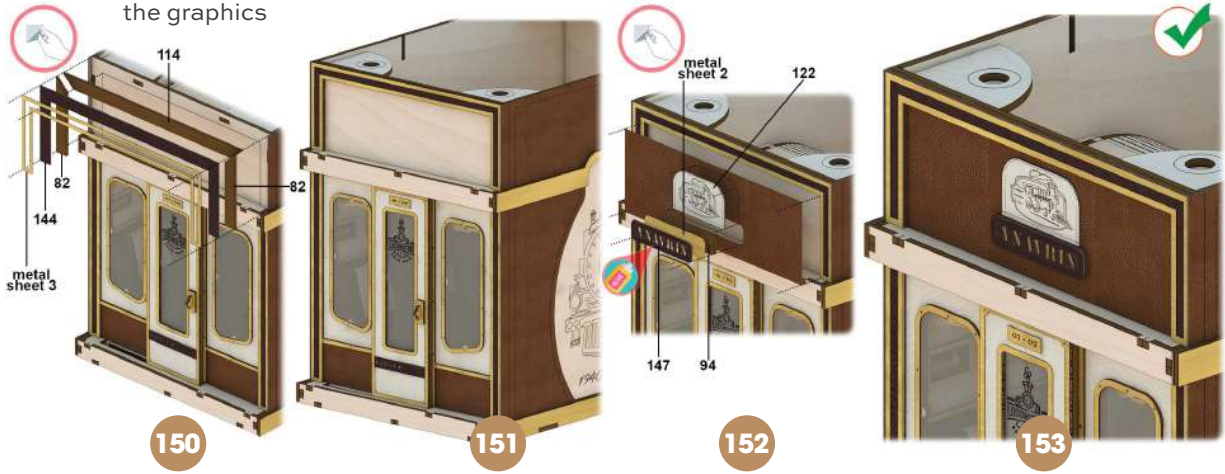
Use glue to assemble wood and metal bar as shown in the graphics



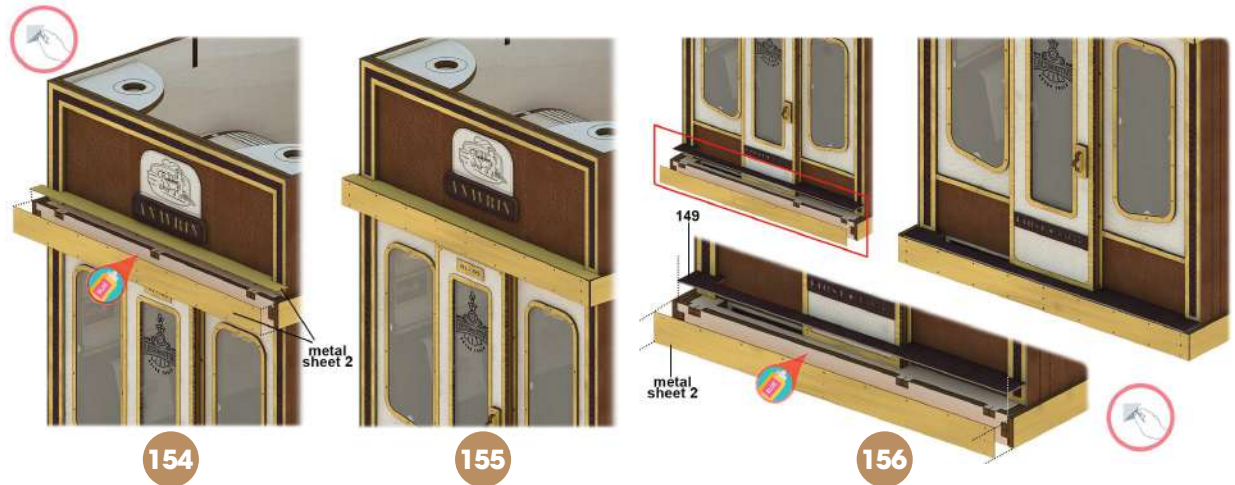
19

Front Leather & Metal Frame

Peel and paste leather layer and metal sheets as shown in the graphics



Front Leather & Metal Frame

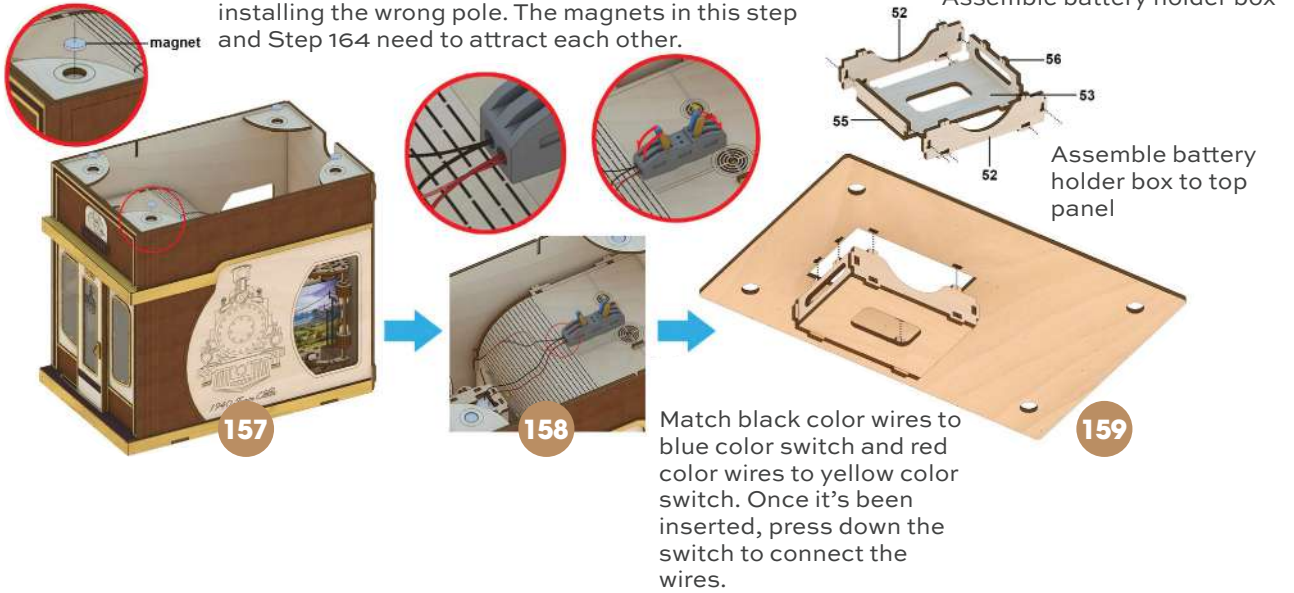




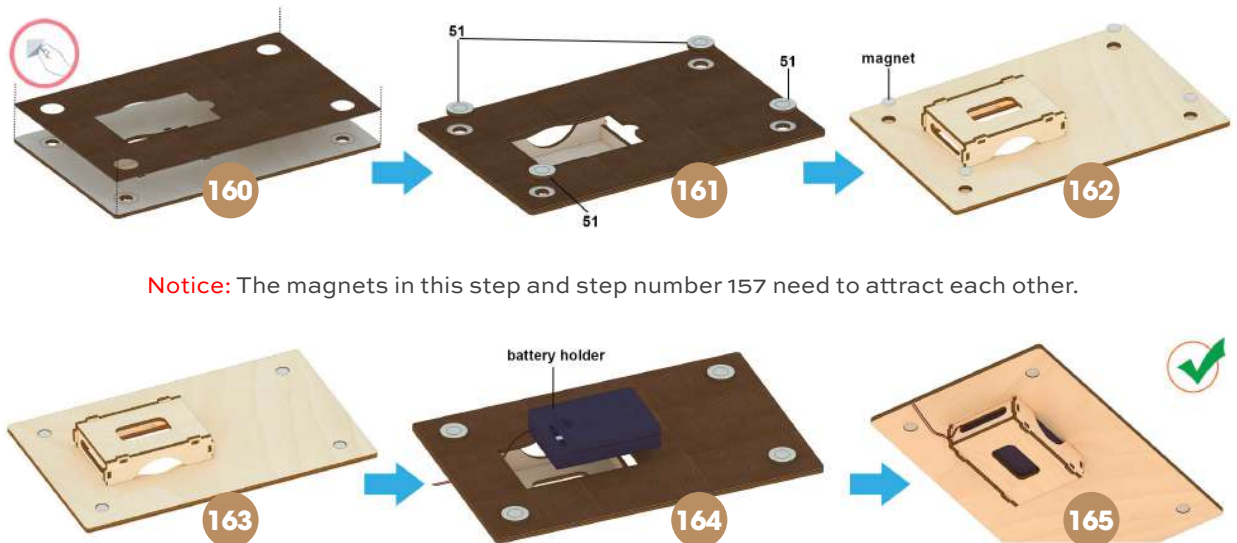
20

### Add Magnet

**Notice:** Please mark the poles of the magnet to avoid installing the wrong pole. The magnets in this step and Step 164 need to attract each other.



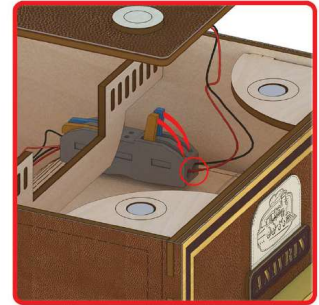
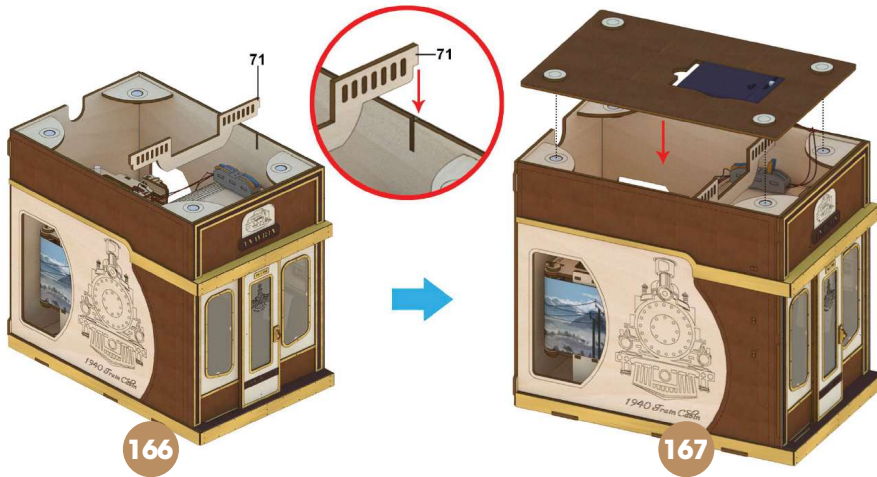
### Top Panel



**Notice:** The magnets in this step and step number 157 need to attract each other.

21

Connect Wires



Insert the other sides of wires matching the black color wires to blue color switch and red color wires to yellow color switch. Once done, press down the switch to connect the wires.

Complete!



## User Manual

---



The power source of the model is 5V/1A - DC equivalent to 3 AA batteries. We recommend using rechargeable batteries to protect the environment and save money. You can also use the corresponding adapter to replace the battery.



Display in a place away from direct sunlight and high humidity.

## Change The Paper Roll

---



You can download more templates of paper rolls for free by visiting our website at [www.byanavrin.com](http://www.byanavrin.com). You can also design it yourself with the dimension of 63mm x 390mm and print it with normal paper. Let's create your very own 1940's Train Cabin and send us your work by tagging us on social media - @byanavrin.

**Step 1:** "Pull out the paper roller part".

**Step 2:** "Cut and remove the old paper roll".

**Step 3:** Add in new paper roll.

**Step 4:** Insert the paper roller back to its original position once you've successfully change the paper roll.



**ANAVRin**