

# KREISDESIGN PEGBOARDS

## Pegboards - Overview

### Materials:

- Birch plywood finished in clear matt varnished or stained
- Melamine (white) faced birch plywood
- Black faced birch plywood
- Birch plywood, custom veneer, e.g. oak
- Birch plywood, custom laminate
- Birch plywood, custom colour painted
- Birch plywood, printed with pattern / logo
- Birch plywood with etched (cnc) design
- OSB raw or painted

*Note: FSC certificates available, fire rating optional*

### Wall mounting:

- wall panel hanging brackets (ButtonFix)
- split battens / french cleat if required

### Free standing Pegboards:

- fitted with slot-on feet on castors as option
- fixed base

### Hole spacing:

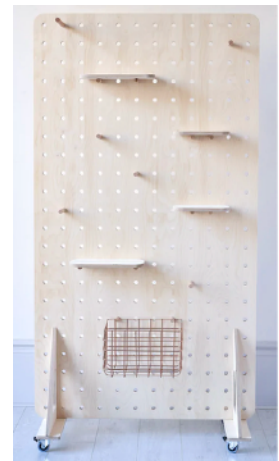
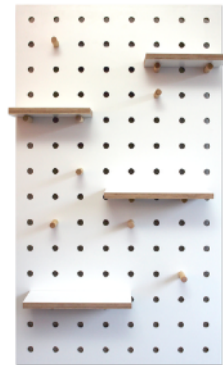
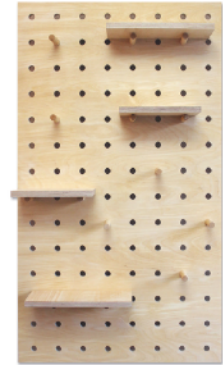
- standard 80mm c-c or 160mm c-c
- standard hole diameter / peg diameter: 18mm - custom sizes available
- Pegs made from solid beech (hold about 10kg each)

**Sheet size** (maximum size single panel) = 1.2m x 2.4m x 15mm/18mm

### Accessories:

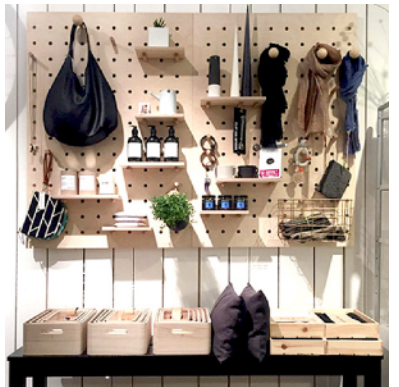
- custom size shelves
- custom size pegs / custom colour / stains
- various attachment, like bulldog clip, prongs, baskets, pen holders, boxes, baskets, etc

Get in touch at [kreisdesign.com](http://kreisdesign.com)



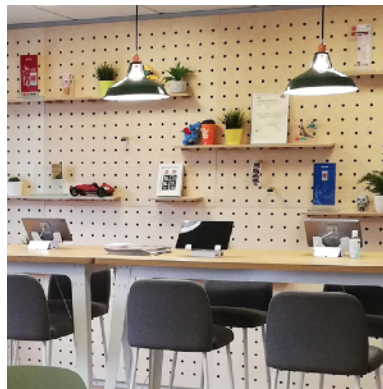
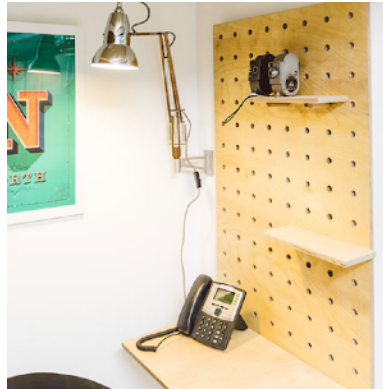
# KREISDESIGN PEGBOARDS

Sample projects: Retail



# KREISDESIGN PEGBOARDS

## Sample projects: Offices



## Sample projects: Hospitality



# KREISDESIGN PEGBOARDS

Sample projects: others

