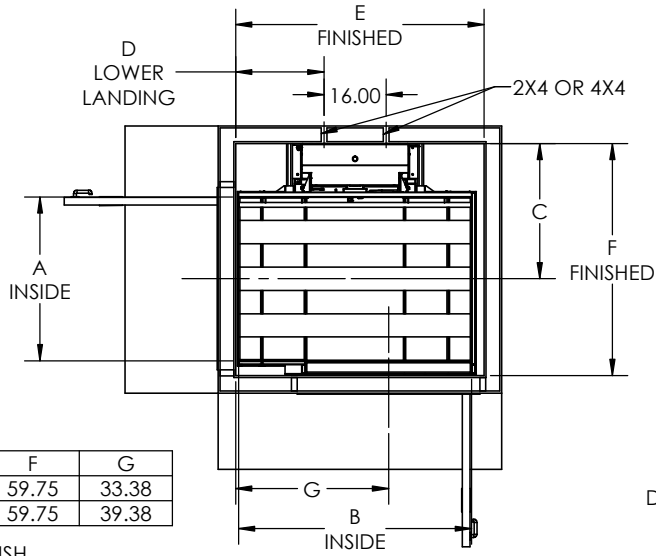
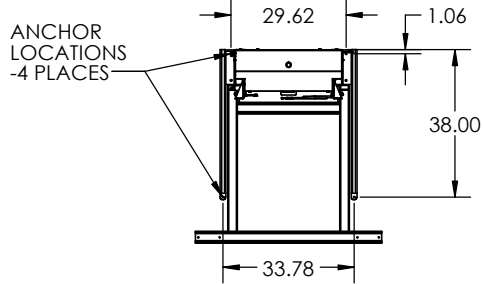


8 7 6 5 4 3 2 1

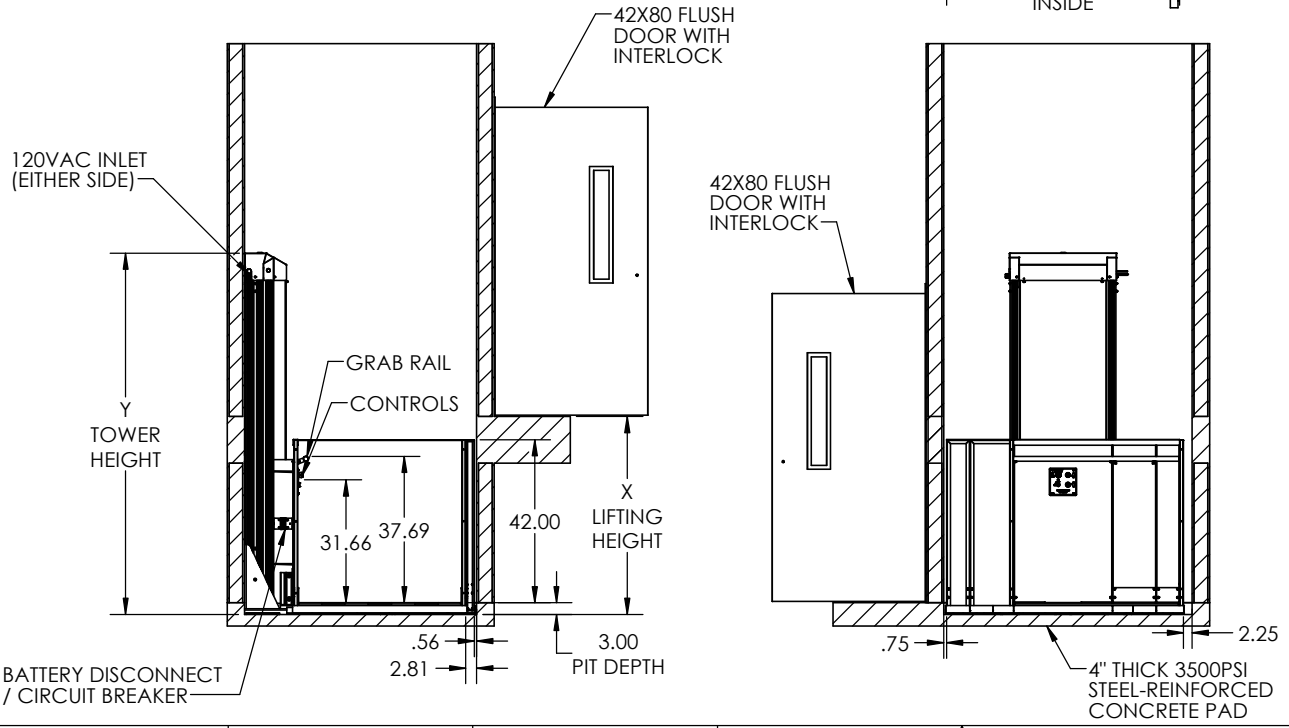


PLATFORM SIZE	A	B	C	D	E	F	G
42X54	42.25	54.00	34.81	16.75	58.00	59.75	33.38
42X60	42.25	60.00	34.81	22.75	64.00	59.75	39.38

Specifications
 Model: VP19
 Rated Load: 750 lbs
 Drive: Dual winding cable drums / 24 VDC
 500 watt motor w/brake
 Supply Power: 120 VAC 15A
 Operating Power: 24 VDC (DUAL 12V 10AH BATTERIES)
 Control Power: 5 VDC
 Platform: (42" x 54") (42" x 60")
 Lift Height: 1" - 144"
 Speed: 15-18 fpm
 Controls: Constant pressure
 Safety Standards: ASME A18.1, Section 2
 CSA B44.1/ASME A17.5
 Safety Features: Safety pan, final limit, slack cable brake, emergency stop w/alarm

DIMENSIONS AND SPECIFICATIONS SUBJECT TO CHANGE

DESIGNED TO COMPLY WITH ANSI A18.1 PART 2 WHEN PROPERLY INSTALLED



MODEL	X	Y
PLH-048	48	93.06
PLH-072	72	117.06
PLH-096	96	141.06
PLH-0120	120	165.06
PLH-0144	144	189.06


 Staying Home Corporation
 2501 Anaconda Rd
 Harrisonville, MO 64701
 816-380-2427
 www.stayinghome.com

TITLE: PLATFORM LIFT - HOISTWAY
 90 LEFT PITTED
 SIZE DWG. NO. REV
 B TYP-PLH-90L P 05/09 2019
 SCALE: WEIGHT: SHEET 1 OF 1

8 7 6 5 4 3 2 1