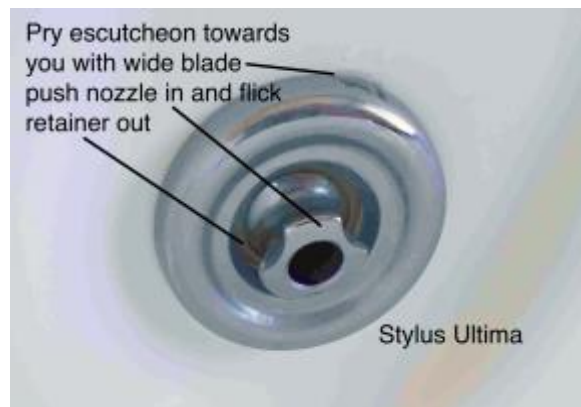
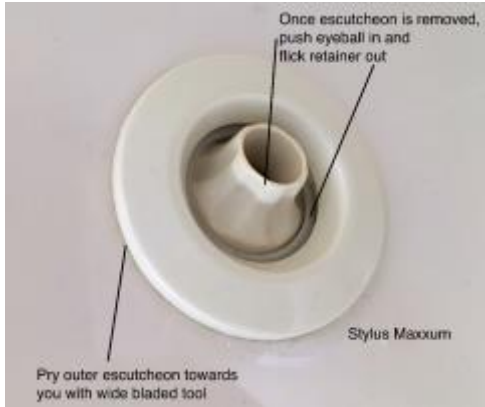


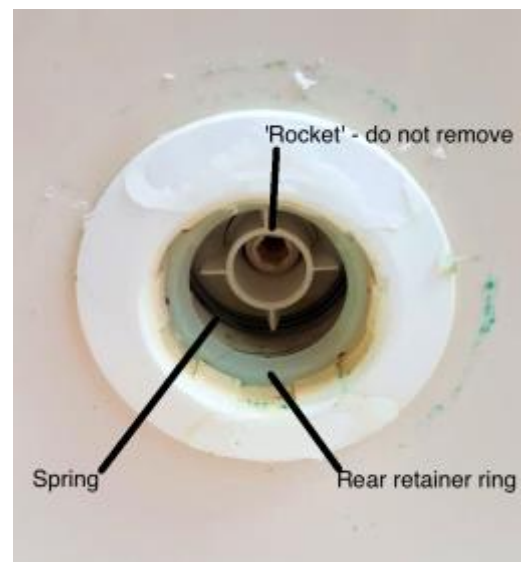
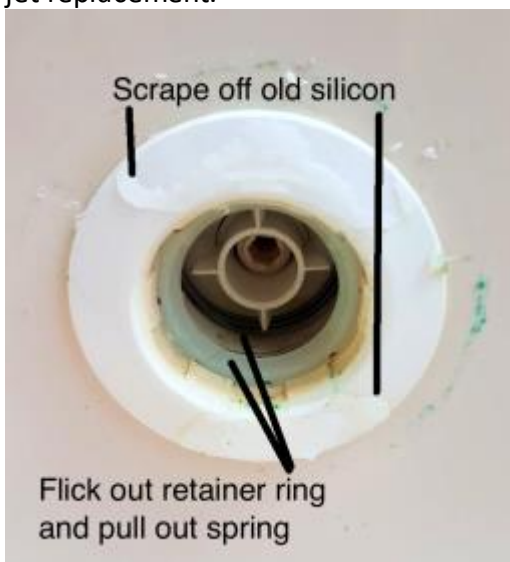
Stylus Maxxum and Ultima spa bath jet replacement guide

1. Pry the outer escutcheon/ring from the jet wall flange with a flat tool such as a wide screwdriver or wood chisel. Protect the spa bath surface from damage whilst doing so.

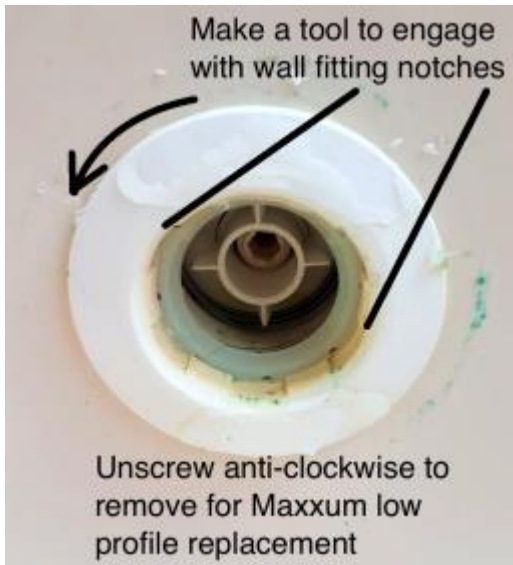


The outer escutcheon is held onto the jet wall flange with ordinary clear silicon. Sometimes a few dabs, other times with a full seal. This may be easy and simply pop off, or difficult and break into pieces. Older chrome and gold escutcheons are plated brass. Newer ones are plated plastic.

2. Once the escutcheon is removed you will need to push the spring loaded eyeball back into the body and flick out the white retainer ring. Then pull the eyeball out. There may be a second rear retainer to remove as well as the spring.
3. Scrape the silicon from the outer ring and clean it well if you are fitting the Pulsator jet replacement.



4. When fitting the Maxxum Low Profile Upgrade Kit, you will need to unscrew the threaded wall fitting and replace it with the low profile version supplied in the upgrade kit.



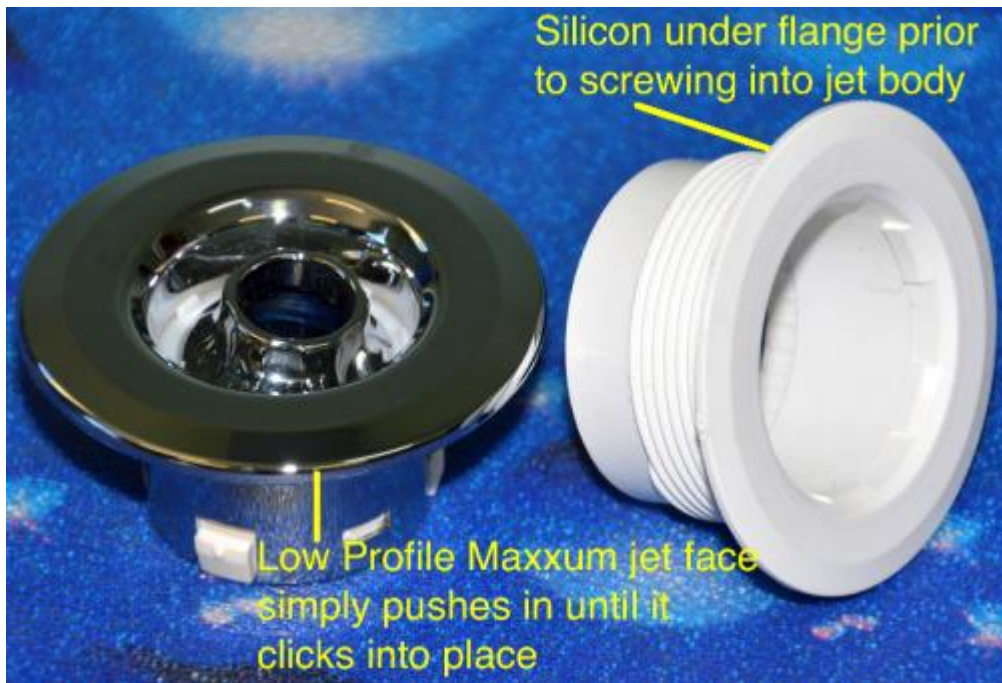
5. Removed jet escutcheon, eyeball nozzle and front retainer ring look like this



Stylus Maxxum

Stylus Ultima

6. With the threaded retainer ring unscrewed out of the jet body and retainer ring & spring removed you are ready to install the upgrade kit. Ensure the jet body 'Rocket' remains in the body – do not unscrew and remove.
 If the body separated from the back of the spa shell during wall fitting removal, you'll need to re-seal with silicon between the jet body and spa shell through the hole opening.
 Put silicon on the rear of the new low profile flange and screw in hand tight plus 1/8th of a turn.
 Clean off excess silicon and allow to dry.
 Once dry, simply push the new Low Profile Maxxum jet face into the body until it clicks in place.
 The complete jet face will rotate to turn jet water flow on/off.



7. However if you are fitting the Pulsator jet face instead, the replacement is simplified - the threaded wall flange is NOT removed. Simply clean the silicon off the original threaded wall fitting, make sure the rear retainer ring and spring are removed. Ensure the jet body 'Rocket' remains in the body – do not unscrew and remove. Simply push the new Pulsator jet face into the body until it clicks in place. The complete jet face will rotate to turn jet water flow on/off.

