

FEZZARI

Quick Assembly Guide

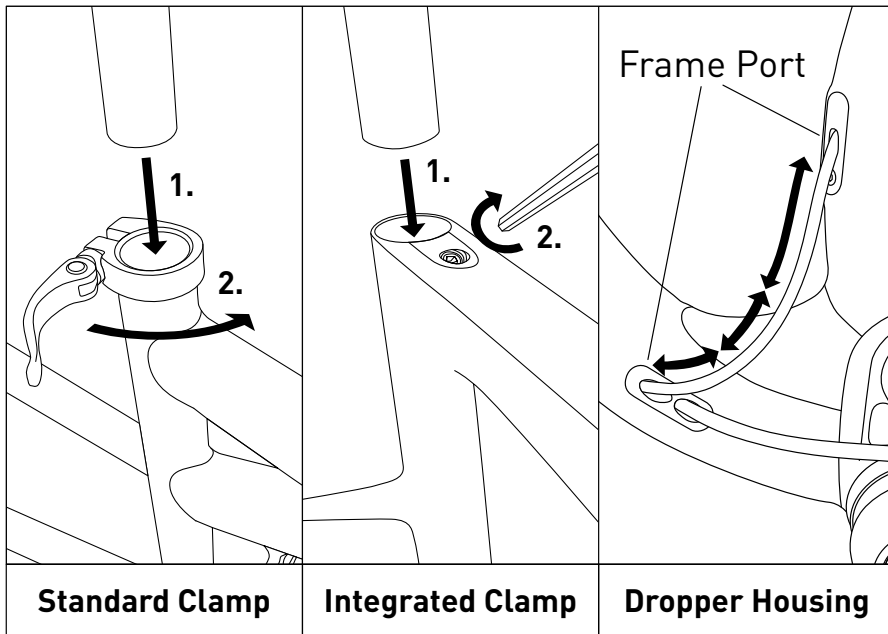
Fezzari bicycles are made with the finest materials and craftsmanship. Fezzari was founded on the premise that discerning customers will embrace products of superior performance, quality, and value. We hope you appreciate your Fezzari experience, and we want this to be the most rewarding purchase you have ever made. If you have any feedback, comments, or questions, we look forward to hearing from you.

Note: This assembly guide is just that, a guide. These steps are a general guide for most of our bicycles. Not all steps will be applicable to your bicycle. For more complete and detailed instructions, please consult your owners manual. As the owner of this bicycle, it is your responsibility to ensure that the bike is maintained well. Always do a thorough check before riding your bike.

For safety in shipping, your Fezzari has been partially disassembled. Follow these steps to assemble your bike and get riding quickly.

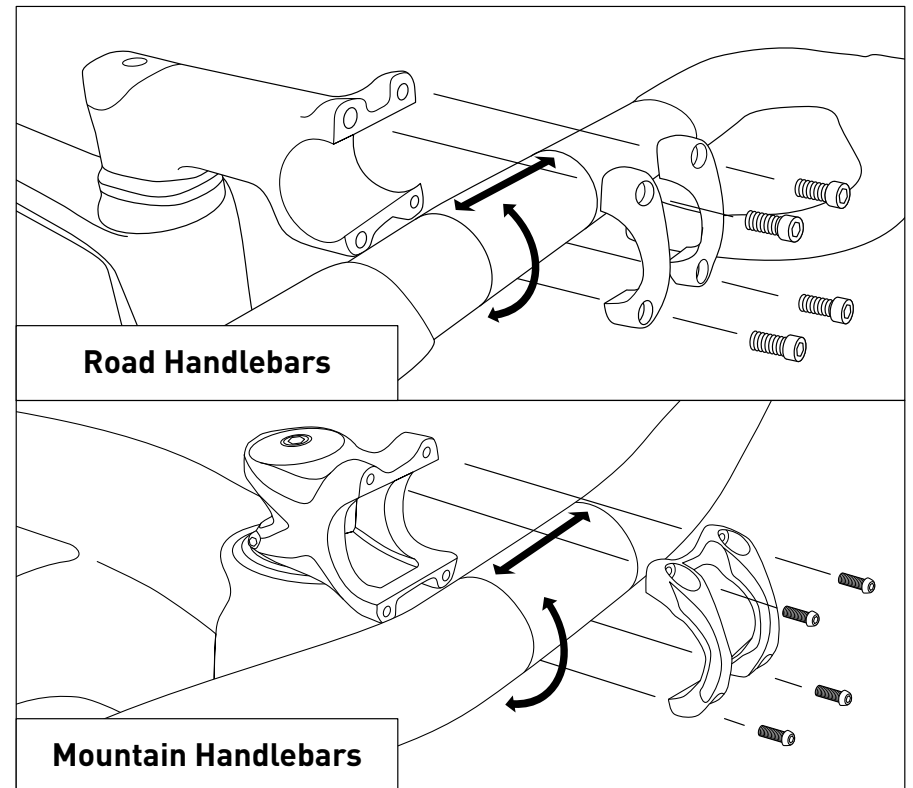
Step 1. Install Seatpost.

When inserting the seatpost into the frame, make sure that the seat is straight and that the seatpost is inserted beyond the minimum insertion point. When moving a pre-installed dropper seatpost higher or lower, make sure you feed the dropper post cable housing through the frame port to prevent it from catching.



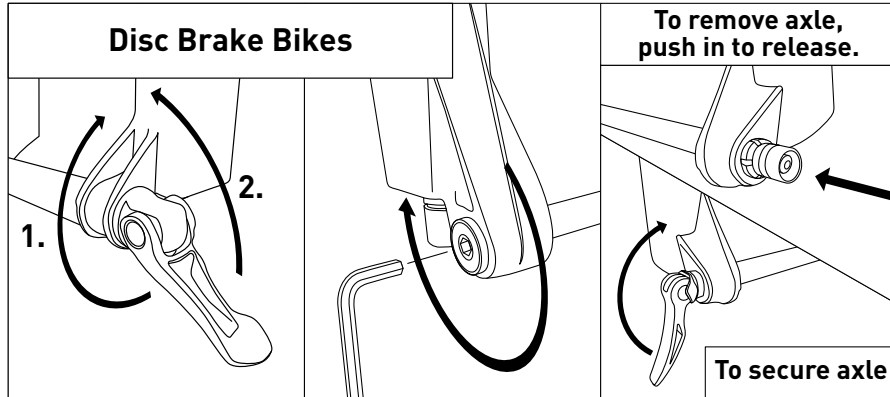
Step 2. Attach Handlebars

Take the stem faceplate off and then make sure that the handlebars are positioned in the center of the stem. Alternate tightening all four stem bolts to 5Nm. When fully tightened, the bars should not be able to rotate within the stem clamp. Take care in positioning the handlebars and controls before you tighten the stem bolts fully.



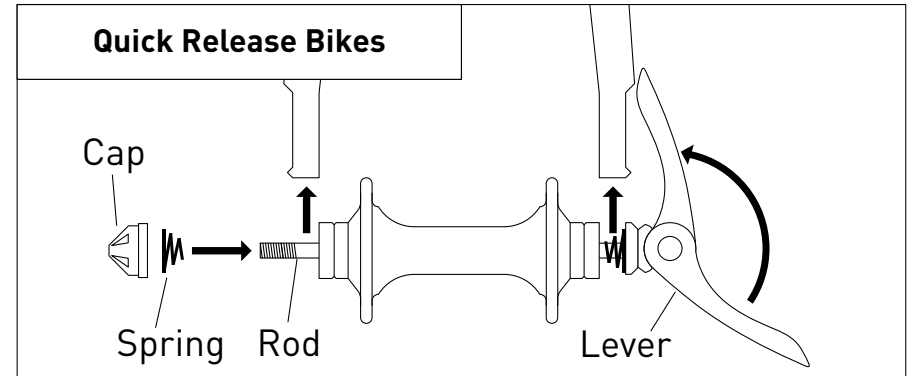
Step 3. Install the Front Wheel

If your bike has disc brakes, it will arrive with a small plastic spacer in the front brake to keep the brake pads separate. Remove the spacer before installing the front wheel. Once the spacer is removed, make sure not to pull the front brake lever while the front wheel is not in the fork. Remove the axle from the fork, place the wheel in the fork dropout, reinsert the axle and tighten it.



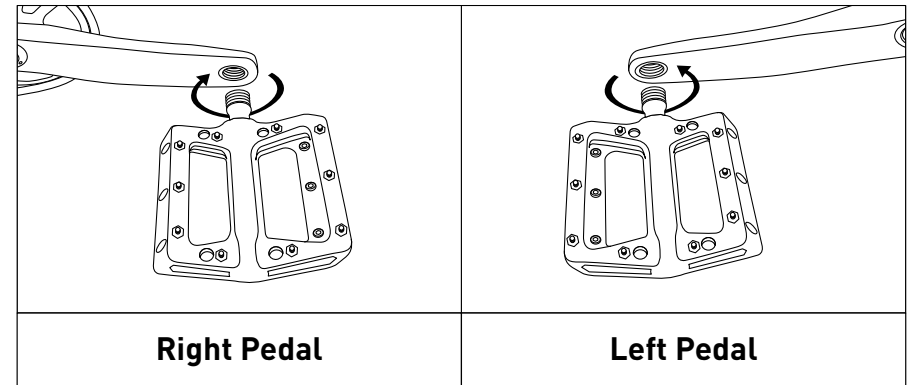
Note: Make sure that the wheel has all of the associated spacers installed. Check to make sure no components are stuck to the packaging materials.

If your bike has a quick release skewer, first, remove the skewer from the fork. Unscrew the cap and remove one spring from the skewer. Insert the skewer rod into the front wheel with the lever on the left side of the wheel. Slide the spring onto the skewer rod small side first and attach the cap 1-2 turns. Next, insert the wheel into the frame. Tighten the cap by hand until it is snug. Lastly, close the quick release lever. It is important that the quick release lever is closed tightly. You may need to adjust the tightness of the cap while the lever is open until you can close the quick release lever fully.



Step 4. Install Pedals

When installing the pedals, make sure you thread the right pedal on the right side and the left pedal on the left side. There is usually an R or an L stamped or printed into the pedal to indicate right and left. The right pedal threads in clockwise. The left pedal threads in counter-clockwise.



Step 5. Get out and ride!

Warning: Before riding your bike, check to see that you can shift through all the gears properly. If the bike does not shift properly, please contact us.

Phone: (801) 471-0440

Email: Questions@fezzari.com

We do our utmost to ensure that this bike is assembled correctly and tuned properly. It is your responsibility to ensure that each component on the bicycle is maintained properly.