

WOOL AND THE GANG

#MADEUNIQUE



NICE TIME SWEATER

INTERMEDIATE

**5MM (US8) CIRCULAR NEEDLES
8MM (US11) KNITTING NEEDLES**

YOUR ADVENTURE STARTS NOW



IT'S FUN

Making is the new yoga. Free your mind, the rest will follow. Namaste.

WE'LL BE THERE FOR YOU

Find all the video tutorials you need online.

YOU'RE GOING TO FEEL GOOD

Nothing will make you happier than holding your finished project.

RECIPE FOR SUCCESS

1

GET YOUR TOOLS READY.

Everything you need to get making.

2

FAMILIARISE YOURSELF WITH THE TECHNIQUES.

Everything from the stitches used to the finishing touches for your project.

3

GET TO KNOW YOUR YARN.

Before you start your piece, play around with your new yarn to get used to it, and to check your tension.

4

WOOL SCHOOL

Pick up your needles & yarn and make the magic happen! For a little extra help, check out our Wool School at:

www.woolandthegang.com/t/how-to

5

#WOOLANDTHEGANG

When you're done - let the world know.

LET'S GET KNITTING

Tool kit

- 5 balls of WATG's Shiny Happy Cotton in colour A
- 4 balls of WATG's Shiny Happy Cotton in colour B
- 1 Nice Time Sweater pattern
- 1 circular knitting needle: 5mm (US8), 100cm (40") long
- 1 pair of 8mm (US11) knitting needles
- 1 sewing needle

Tension

To ensure your knitting has the same measurements as the pattern, it is a good idea to make a tension swatch before you start knitting your project. A tension swatch is a small sample of your knitting where you count the stitches and rows and check them against the tension given in the pattern. If you get MORE stitches/rows than the pattern's tension, it means your knitting is tighter. If you get FEWER stitches/rows than the pattern, your knitting is looser. Sometimes, it works to knit tighter or looser to compensate.

1x1 Rib stitch

10cm/4" = 21 stitches

10cm/4" = 21 rows

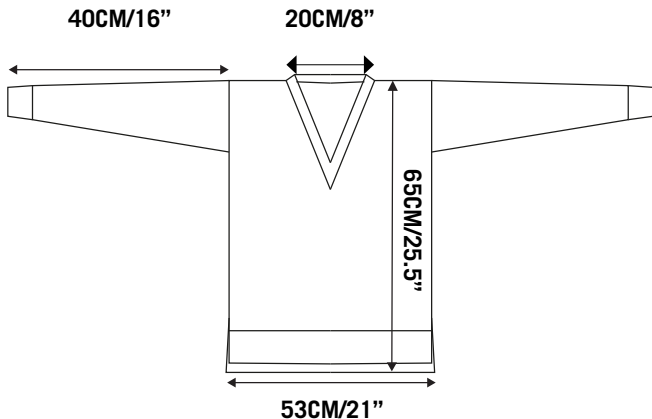
Lace stitch

10cm/4" = 10 stitches

10cm/4" = 15 rows

All knitting techniques can be found at the back of the pattern.

MEASUREMENTS



Help's only a stitch away. Watch the video tutorials online at www.woolandthegang.com/t/how-to

Pssst! Remember that you must not copy our patterns and sell, or even give them away for free, in accordance with copyright law.

HOW TO KNIT YOUR NICE TIME SWEATER

BACK

1 With 5mm (US8) knitting needles and colour A, cast on 110 stitches using the long-tail cast on technique.

2 Work 8 rows in 1x1 rib stitch. Cut colour A.

3 Change to colour B, work 4 rows in 1x1 rib stitch. Cut colour B.

4 Change to colour A, work 8 rows in 1x1 rib stitch.

Your next row will be a wrong-side row.

5 With 8mm (US11) knitting needles, and 1 strand of colour A, and 1 strand of colour B held together, ★purl 2 stitches together. ★ Repeat the section inside the stars to the end of the row. (55 stitches.)

Next, you will be working in lace stitch.

6 Slip 1 stitch knit-wise, ★make a lace hole, knit 2 stitches together. ★ Repeat the section inside the stars to the end of the row.

7 Slip 1 stitch purl-wise, ★make a lace hole, purl 2 stitches together. ★ Repeat the section inside the stars to the end of the row.

- 8 Repeat steps 6 and 7 until your piece measures 65cm from the cast on edge (approx. a further XX rows).
-

- 9 Cast off loosely.

FRONT

- 1 Follow steps 1 to 7 as given for the back.
-
- 2 Repeat steps 6 and 7 until your piece measures 37cm from the cast on edge, your last row must be a right-side row.
-
- 3 Slip 1 stitch purl-wise, ★make a lace hole, purl 2 stitches together. ★ Repeat the section inside the stars a further 12 times. Purl 2 stitches together. Repeat the section inside the stars to the end of the row. (54 stitches.)

Next, you will shape the V-neck. You will be working across only half of your stitches – simply leave the rest of the stitches on the needle for now, you will come back to them later.

- 4 Decrease row: Slip 1 stitch knit-wise, ★make a lace hole, knit 2 stitches together. ★ Repeat the section inside the stars a further 10 times. Knit 2 stitches together, knit the next 2 stitches together. (25 stitches in this half.)

- 5 Slip 1 stitch purl-wise, ★make a lace hole, purl 2 stitches together.★ Repeat the section inside the stars a further 11 times.
-
- 6 Slip 1 stitch knit-wise, ★make a lace hole, knit 2 stitches together.★ Repeat the section inside the stars to the end of this section.
-
- 7 Slip 1 stitch purl-wise, ★make a lace hole, purl 2 stitches together.★ Repeat the section inside the stars to the end of this section.
-
- 8 Repeat steps 6 and 7 twice more.
-
- 9 Decrease row: Slip 1 stitch knit-wise, ★make a lace hole, knit 2 stitches together.★ Repeat the section inside the stars until you have 4 stitches left of your row. Knit 2 stitches together, knit the next 2 stitches together. (23 stitches in this half.)
-
- 10 Slip 1 stitch purl-wise, ★make a lace hole, purl 2 stitches together.★ Repeat the section inside the stars to the end of this section.
-
- 11 Repeat steps 6 and 7 a further 3 times.
-
- 12 Repeat steps 9 to 11 twice more. (19 stitches.)
-
- 13 Repeat steps 9 and 10 once more. (17 stitches.)
-
- 14 Repeat steps 6 and 7 twice more.
-

15 Cast off loosely.

Re-join the yarn to the stitches that have been waiting on your needle.

16 Decrease row: Slip 1 stitch knit-wise, ★make a lace hole, knit 2 stitches together, ★ knit 2 stitches together, knit 2 stitches together. Repeat the section inside the stars to the end of the row. (25 stitches.)

17 Slip 1 stitch purl-wise, ★make a lace hole, purl 2 stitches together. ★ Repeat the section inside the stars to the end of the row.

18 Slip 1 stitch knit-wise, ★make a lace hole, knit 2 stitches together. ★ Repeat the section inside the stars to the end of the row.

19 Slip 1 stitch purl-wise, ★make a lace hole, purl 2 stitches together. ★ Repeat the section inside the stars to the end of the row.

20 Repeat steps 18 and 19 twice more.

21 Repeat steps 16 to 20 a further 3 times. (19 stitches.)

22 Repeat steps 16 to 19 once more. (17 stitches.)

23 Repeat steps 18 and 19 once more.

24 Cast off loosely.

SLEEVE

Follow the instructions twice to make the two sleeves.

1 With 5mm (US8) knitting needles and colour A, cast on 34 stitches using the long-tail cast on technique.

2 Work 8 rows in 1x1 rib stitch. Cut colour A.

3 Change to colour B, work 4 rows in 1x1 rib stitch. Cut colour B.

4 Change to colour A, work 8 rows in 1x1 rib stitch.

Your next row will be a wrong-side row.

5 With 8mm (US11) knitting needles, and 1 strand of colour A, and 1 strand of colour B held together, purl 2 stitches, ★purl 2 stitches together.★ Repeat the section inside the stars until you have 2 stitches left of your row, purl the last 2 stitches. (19 stitches.)

Next, you will be working in lace stitch.

6 Slip 1 stitch knit-wise, ★make a lace hole, knit 2 stitches together.★ Repeat the section inside the stars to the end of the row.

7 Slip 1 stitch purl-wise, ★make a lace hole, purl 2 stitches together.★ Repeat the section inside the stars to the end of the row.

8 Increase row: Slip 1 stitch knit-wise, ★make a lace hole, knit 2 stitches together.★ Make a lace hole, knit 1 stitch, make a lace hole, knit 1 stitch. Repeat the section inside the stars until you have 4 stitches left of your row. Make a lace hole, knit 1 stitch, make a lace hole, knit 1 stitch, make a lace hole, knit 2 stitches together. (23 stitches.)

9 Slip 1 stitch purl-wise, ★make a lace hole, purl 2 stitches together.★ Repeat the section inside the stars to the end of the row.

10 Slip 1 stitch knit-wise, ★make a lace hole, knit 2 stitches together.★ Repeat the section inside the stars to the end of the row.

11 Slip 1 stitch purl-wise, ★make a lace hole, purl 2 stitches together.★ Repeat the section inside the stars to the end of the row.

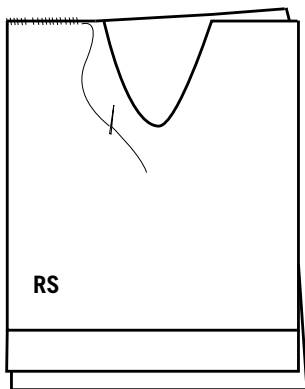
12 Repeat steps 8 to 11 a further 7 times. (51 stitches)

13 Repeat steps 10 and 11 a further 5 times.

14 Cast off loosely.

ASSEMBLY AND FINISHING

- 1 Lay your front piece on top of your back piece with the wrong sides together.
-
- 2 Using colour A, and the the horizontal invisible seam technique, sew the right shoulder seam.



- 3 Using 5mm (US8) knitting needles and colour A, pick up and knit a total of 135 stitches along the neck edge of your sweater. Start at the top edge of the left front, and distribute the stitches as follows:

Left front - sloped edge: 48 stitches
Front - flat bottom of the V: 3 stitches

Right front - sloped edge: 48 stitches

Back neck edge: 36 stitches

- 4** Starting with a knit stitch, work 1 row in 1x1 rib stitch.

 - 5** Decrease row: Work 48 stitches in 1x1 rib stitch, make a double knit decrease, work in 1x1 rib stitch to the end of the row. (133 stitches.)

 - 6** Decrease row: Work 83 stitches in 1x1 rib stitch, make a double purl decrease, work in 1x1 rib stitch to the end of the row. (131 stitches.)

 - 7** Decrease row: Work 46 stitches in 1x1 rib stitch, make a double knit decrease, work in 1x1 rib stitch to the end of the row. (129 stitches.)

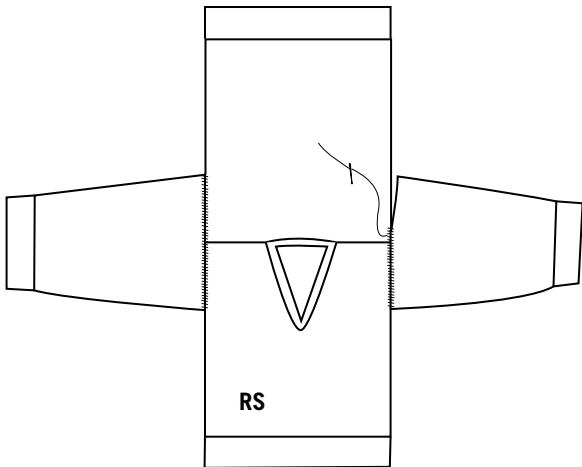
 - 8** Decrease row: Work 81 stitches in 1x1 rib stitch, make a double purl decrease, work in 1x1 rib stitch to the end of the row. (127 stitches.)

 - 9** Cast off in ribbing.

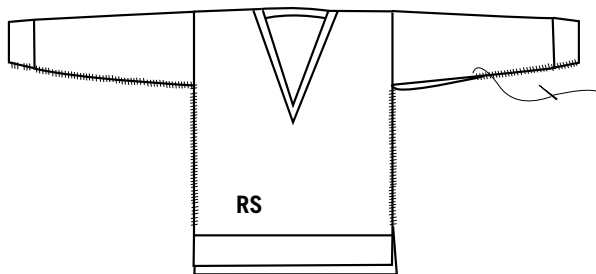
 - 10** Use the horizontal invisible seam technique to sew the left shoulder seam, changing to the invisible vertical seam technique to sew the side of the neck rib.
-

SLEEVES AND SIDE SEAMS

- 1 With the right sides facing, line your sleeves up with the body piece, so that the centre of the cast off edge on the sleeve meets the shoulder seam.



- 2 Now fold your sweater in half along the shoulders and sleeves, with the right side facing out. Starting at the sleeve opening, use whip stitch to sew the side edges together all the way up to the underarm. Then, carry on down the sides of the sweater. Finish your seam 15cm/6" from the bottom of the back piece (12cm/5" from the bottom of the front piece.)



- 3 Repeat for the other side.
- 4 Weave in the loose ends.

KNITTING TECHNIQUES



Help's only a stitch away. Watch the video tutorials online at www.woolandthegang.com/t/how-to

Work! Work! Work!

There are two main ways to 'work' stitches: they can be knitted or purled. When the pattern asks you to 'work' a number of stitches/rows/cm, it will always specify which stitch pattern to work in.

Using circular needles for knitting flat pieces

Circular needles aren't just for knitting in the round - they are also great for knitting flat pieces, if you have more stitches than you can fit on standard straight knitting needles. As you knit, the stitches will move across from the end of the circular needle in your left hand towards the other end in your right hand - the stitches you have knitted will hang between the two needle ends. After knitting your row, simply turn the long needle around so the end of your work with the tail of yarn you are knitting with is in your left hand ready to start a new row.

Long-tail cast on / [Online video tutorial](#)

This creates a nice elastic edge, suitable for stretchy items like ribbed edges. To make sure that the edge isn't too tight, you can cast on over two knitting needles held together.

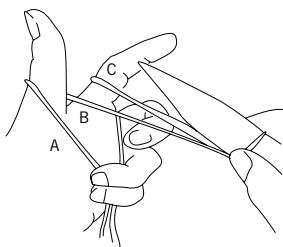
1. Start by making a slipknot - the 'yarn tail' needs to be quite long for this cast on, hence the name! Place the slipknot on

your knitting needle, and hold the needle in your right hand, with the yarn hanging straight down.

2. Now insert the thumb and index finger of your left hand between the two strands of yarn hanging from the needle, and then close your ring finger and little finger around the yarn to trap it.

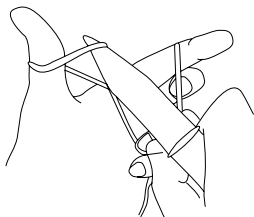
Stretch out your thumb and index finger as far from each other as possible, stretching the yarn taut.

3. You will be using three separate strands of yarn:

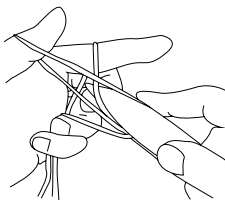


- A: the strand which sits closest to you, in front of the thumb
- B: the strand that goes from the thumb to the slipknot on the needle
- C: the strand that goes from the needle to your index finger

4. Place the needle in front of A, then bring it under A and let it come up between A and B.



5. Now bring the needle over and behind C, and scoop the yarn (C) up with the tip of your needle.

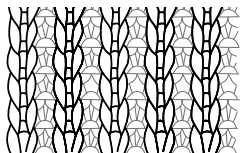


6. Bring the needle tip with the yarn back between A and B (the same way you came before), so that it ends up in front of A. Now pull your thumb out from the yarn that's looped around it. Tug on the yarn to tighten up the new loop on your knitting needle, then insert your thumb again between the two yarn strands hanging down from the newly formed loop on your needle.

7. Repeat steps 4-6 to continue casting on stitches.

1 x 1 Rib stitch / [▶ Online video tutorial](#)

Working over an even number of stitches, repeat the following row:
★ Knit 1 stitch, purl 1 stitch. ★ Repeat the section inside the stars to the end of the row.



Adding a new ball of yarn / [▶ Online video tutorial](#)

When your ball of yarn runs out, tie a loose knot on to the tail with the new ball of yarn and slide it up to the needle. Tighten the knot. Continue knitting with the new yarn.

Working with multiple strands of yarn

Sometimes, a pattern will tell you to work with two or more strands. To do this, just hold all the strands together and knit with them as if they were a single, thick yarn!

Decreasing / [▶ Online video tutorial](#)

Instead of knitting only one stitch at a time, knit two stitches together. Insert the front of your right needle through the first two stitches on the left needle, then knit them together as a single stitch. For decreasing on purl rows, insert the needle through the two stitches from right to left and purl together as a single stitch.

Make a lace hole

To make a lace hole, start with the yarn at the back of the work, then bring it to the front by passing it between the two needles. Finally, return the yarn to the back by bringing it over the right needle. You have now created a new loop on the right needle - this is what forms your lace hole as you continue knitting.

Lace stitch

This is a simple lace pattern that combines a lace hole and a decrease.

Worked over an uneven number of stitches, repeat the following two rows:

Row 1 (RS): Slip the 1st stitch knit-wise. ★Make a lace hole, knit the next two stitches together.★ Repeat the section inside the stars to the end of the row.

Row 2 (WS): Slip the 1st stitch purl-wise. ★Make a lace hole, purl the next two stitches together.★ Repeat the section inside the stars to the end of the row.

Double knit decrease

Slip the next stitch onto the right needle without knitting it, then knit two stitches together. Now use the tip of the left needle to lift the slipped stitch over the last stitch knitted, and off the right needle (like when you're casting off stitches). You have now decreased by two stitches.

Double purl decrease

Slip the next stitch onto the right needle without purling it.

Holding the yarn ready to work a purl stitch, insert the right needle into the back of the second stitch on the left needle, from left to right (behind the left needle). Then continue by inserting the needle into the first stitch as well (from left to right as before). Wrap the yarn and complete the stitch as for a normal purl stitch. Now use the tip of the left needle to lift the slipped stitch over the last stitch purled, and off the right needle (like when you're casting off stitches). You have now decreased by two stitches.

Casting off / [▶ Online video tutorial](#)

To complete your project, you need to cast off your last row of stitches in order to make an edge that won't unravel. For your final row, knit the first two stitches. Using the tip of the left needle, lift the first stitch up and over the second stitch and then slip it off the right needle. Now you have only one stitch on your right needle. Knit the next stitch from the left needle, then lift the previous stitch over it and off the needle as before. Do this with each stitch until there are no stitches on the left needle and just one stitch on the right needle. Cut the yarn, leaving a 15 cm/6" end. Pull on the last loop until the end pops through - you've now secured the last stitch.

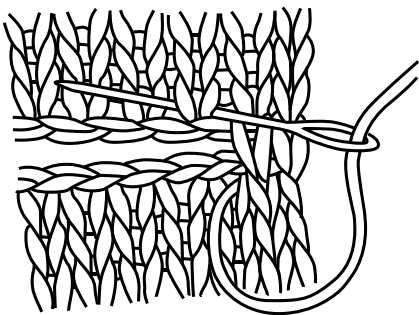
Casting off in ribbing

To create a stretchy edge, cast off in ribbing. To do this, knit one stitch, then purl one stitch. Use the tip of the left needle to lift the first stitch over the last one, and off the needle. Knit the next stitch, and lift the previous stitch over it and off the needle. Purl the next stitch, and lift the previous stitch over it and off the needle. Repeat the last two stitches, so that you are alternating between knit and purl stitches as you cast off.

FINISHING TECHNIQUES

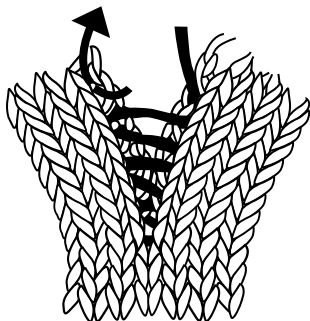
Horizontal invisible seam technique / [▶ Online video tutorial](#)

This technique is used for sewing together horizontal edges (like cast on and cast off edges). Align the two edges so that they are lined up stitch by stitch. Insert the sewing needle under a V stitch and then under the corresponding V stitch on the other side. Continue in this way until the seam is complete.



Vertical invisible seam / [▶ Online video tutorial](#)

This technique is used to join two side edges. Line up the edges side by side with the right side of the fabric facing up. Insert your sewing needle under the first horizontal bar between the first two stitches on the edge you want to join. Pull the yarn through and insert the needle through the opposite horizontal bar on the other piece. Sew back and forth through the horizontal bars along the edge. To tighten the stitches, pull the yarn gently - and they will disappear.

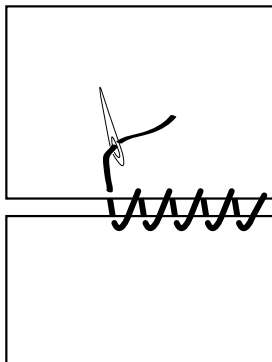


Whip stitch

This is a simple way of joining two pieces of knitting.

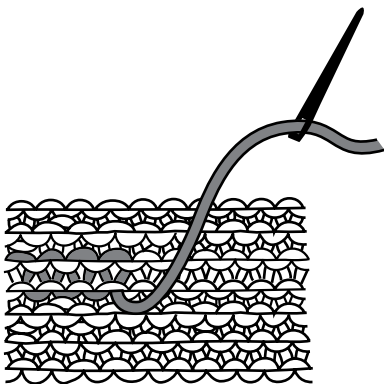
1. Place the two pieces together with the right sides facing you.
2. Thread your sewing needle with a strand of yarn, and secure it to the wrong side of the fabric.
3. Insert your sewing needle through the first stitch of your row and, working from the inside of your piece to the outside, pull the yarn through your first piece.
4. Insert your sewing needle into the next stitch in your second piece of fabric, and push it back from outside to inside. Pull the yarn through.
5. Move back to your first piece and work from inside to outside once more.

Continue in this way until your seam is done.



Weaving in the ends / [▶ Online video tutorial](#)

Weave the ends of your yarn into your knitting to finish it off and stop it from unravelling. Thread the tail onto the sewing needle. Weave the yarn along the edge of your knitting as shown in the illustration. Where you have started a new ball, weave one tail in one direction and the other tail in the opposite direction. Weave in approximately 10cm/4", then cut the tail.



MAKING MEMOIRS

STARTED ON

FINISHED ON

WHERE I MADE IT

-

-

-

MADE FOR

Me

COLOUR COMBO

THIS PROJECT WAS

() easy peasy () nice () challenging () hardcore

I FEEL    

OTHER THOUGHTS

.....



1"

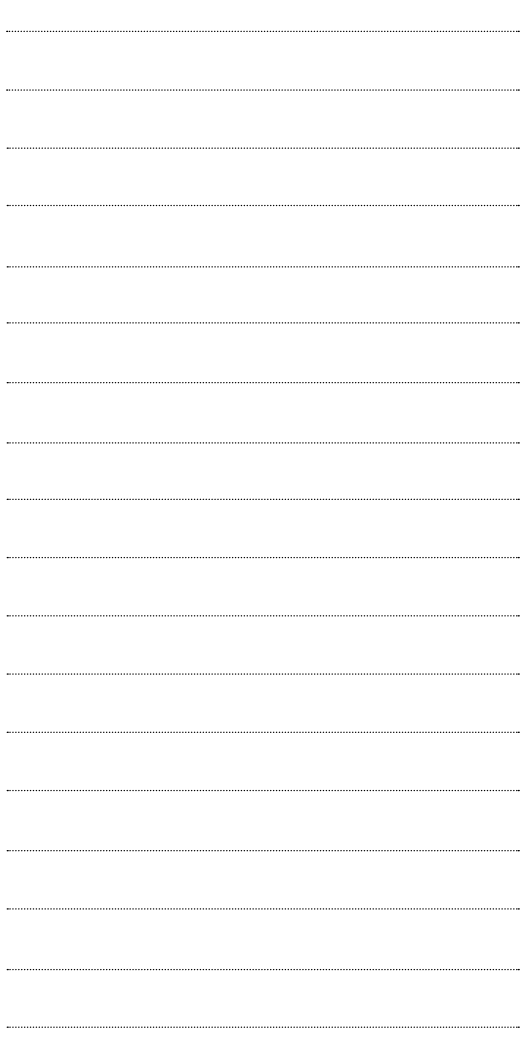
2"

3"

4"

5"





5 CM

10 CM



Wool and the Gang



@woolandthegang



@woolandthegang



WATGsnaps



Wool and the Gang



woolandtheganghq

YOUR PROJECT DESERVES SOME SEXY YARN



CRAZY SEXY WOOL
100% Peruvian Wool



SUGAR BABY ALPACA
100% Baby Alpaca



WOOL ME TENDER
100% Peruvian Wool



JERSEY BE GOOD
98% Cotton
2% Elastane



MIXTAPE YARN
80% Cotton
20% Polyester



BILLIE JEAN
100% Upcycled Denim



SHINY HAPPY COTTON
100% Peruvian
Pima Cotton



WOOLY BULLY ALPACA
80% Superfine Alpaca
20% Merino Wool



SHEEPACA YARN
50% Baby Alpaca
50% Merino Wool



TAKE CARE MOHAIR
78% Kid Mohair
13% Wool / 9% Polyamide



FEELING GOOD
70% Baby Alpaca
7% Merino / 23% Nylon

**WOOL
AND THE
GANG**

V241162547

