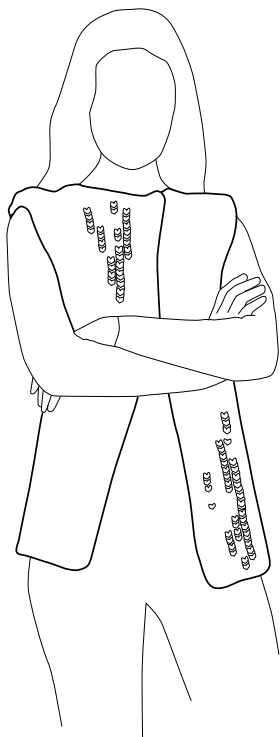


# WOOL AND THE GANG

#MADEUNIQUE



## EDIE VEST

**INTERMEDIATE**  
12MM (US17) NEEDLES

# LET'S GET KNITTING

## Tool kit

- 5 balls of WATG's Crazy Sexy Wool
- 1 Edie Vest pattern
- 1 pair of 12mm (US17) knitting needles
- 1 sewing needle

## Tension

To ensure your knitting has the same measurements as the pattern, it is a good idea to make a tension swatch before you start knitting your project. A tension swatch is a small sample of your knitting where you count the stitches and rows and check them against the tension given in the pattern. If you get MORE stitches/rows than the pattern's tension, it means your knitting is tighter. If you get FEWER stitches/rows than the pattern, your knitting is looser. Sometimes, it works to knit tighter or looser to compensate.

When you make your swatch, make sure it is large enough for you to measure 10 cm/4" without including the stitches/rows closest to the edges (as these often have a slightly different tension). When you're done swatching, simply unravel and re-use the yarn to start knitting your Edie Vest.

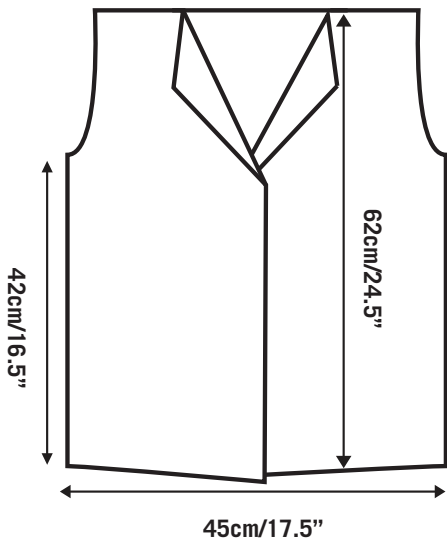
## Twisted rib stitch

- 10 cm/4" = 10.5 stitches
- 10 cm/4" = 10 rows

**All knitting techniques can be found at the back of the pattern.**

---

## MEASUREMENTS



### **Help's only a stitch away**

Watch the video tutorials online at  
[www.woolandthegang.com/video-tutorials](http://www.woolandthegang.com/video-tutorials)

Pssst! Remember that you must not copy our patterns and sell, or even give them away for free, in accordance with copyright law. Also, you must not sell any articles made from our patterns without prior consent from WATG.

# HOW TO KNIT YOUR EDIE VEST

## BACK

- 1 Cast on 48 stitches using the cable cast on technique.

---

- 2 Work in twisted rib stitch until your piece measures 62cm/24.5" from the cast on edge. (Approx. 62 rows.)

---

- 3 Cast off.

## FRONT

Follow the instructions twice to make the left and right front.

- 1 Cast on 28 stitches using the cable cast on technique.

---

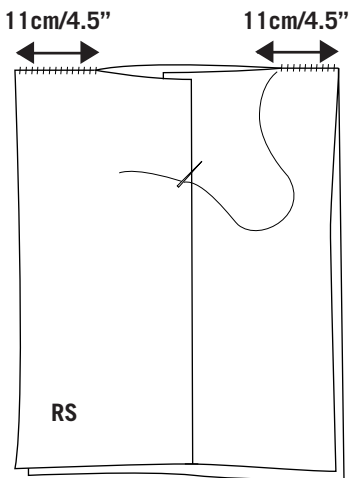
- 2 Work in twisted rib stitch until your piece measures 62cm/24.5" from the cast on edge. (Approx. 62 rows.)

---

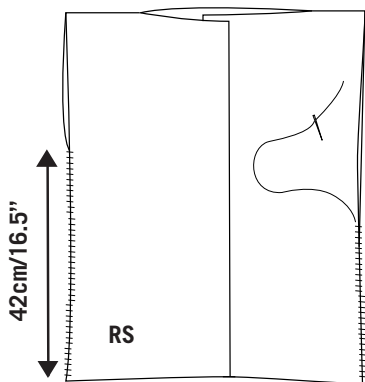
- 3 Cast off.

## ASSEMBLY AND FINISHING

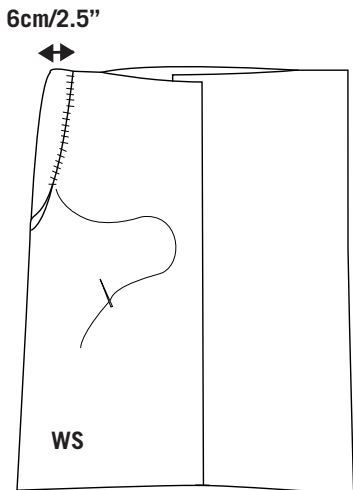
- 1 Place your front and back panels on top of each other, with the wrong sides touching.
- 2 Thread your sewing needle with a length of yarn. Starting at the outside edges, use the horizontal invisible seam technique to sew up the shoulder seams for 11cm/4.5".



- 3 Starting at the bottom hem, use the vertical invisible seam technique to sew the side edges together for 42cm/16.5". Repeat for the other side.



- 4 Turn your vest inside out. Fold the outside edge of the shoulder to the inside for 6cm/2.5". Starting at the shoulder seam, sew the folded edge down creating a gentle curve down to the bottom of the armhole. Repeat for the other side.



- 5 Repeat step 4 for the other armhole.
- 6 Weave in the loose ends.

# KNITTING TECHNIQUES

## **Work! Work! Work!**

There are two main ways to 'work' stitches: they can be knitted or purled. When the pattern asks you to 'work' a number of stitches/rows/cm, it will always specify which stitch pattern to work in.

## **Cable cast on**

Create a slip knot on the left hand needle. Knit on one stitch, creating two stitches on the left hand needle. Now insert the right needle between the two stitches, wrap and bring through. Transfer the newly created stitch onto the left hand needle. Repeat until you have cast on the number of stitches indicated in the pattern.

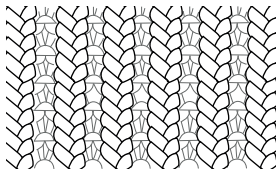
## **Twisted rib stitch**

This is a variation on the 1 x 1 rib that creates a neat, gorgeous rib pattern. When worked over an even number of stitches, repeat the following row:

Holding the yarn ready to work a knit stitch, insert the right needle into the back of the next stitch on the left needle, with the tip of the right needle sitting behind the left needle. Wrap the yarn as for a normal knit stitch, pull through and complete the stitch: you have now knitted this stitch twisted. Now hold the yarn as if to purl the next stitch and insert the right needle into the back of the next stitch from left to right. Your right needle will be behind the left needle as you do this, and the tips of both needles will be pointing in the same direction.



Wrap the yarn and complete as a purl stitch: this stitch was purled twisted. Repeat these two stitches.



### **Adding a new ball of yarn**

When your ball of yarn runs out, or when you need to change the colour, tie a loose knot on to the tail with the new ball of yarn and slide it up to the needle. Tighten the knot. Continue knitting with the new yarn.

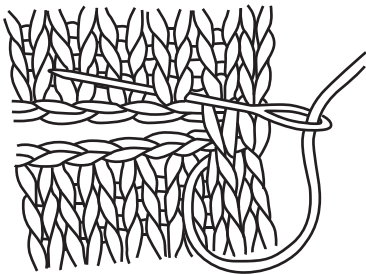
### **Casting off**

To complete your project, you need to cast off your last row of stitches in order to make an edge that won't unravel. For your final row, knit the first two stitches. Using the tip of the left needle, lift the first stitch up and over the second stitch and then slip it off the right needle. Now you have only one stitch on your right needle. Knit the next stitch from the left needle, then lift the previous stitch over it and off the needle as before. Do this with each stitch until there are no stitches on the left needle and just one stitch on the right needle. Cut the yarn, leaving a 15 cm/6" end. Pull on the last loop until the end pops through - you've now secured the last stitch.

## FINISHING TECHNIQUES

### Horizontal invisible seam technique

This technique is used for sewing together horizontal edges (like cast on and cast off edges). Align the two edges so that they are lined up stitch by stitch. Insert the sewing needle under a V stitch and then under the corresponding V stitch on the other side. Continue in this way until the seam is complete.



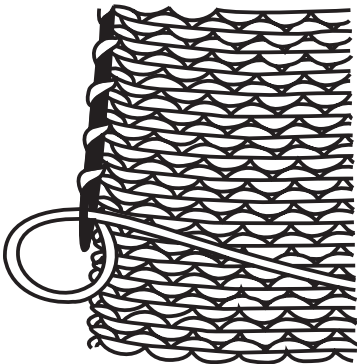
## Vertical invisible seam

This technique is used to join two side edges. Line up the edges side by side with the right side of the fabric facing up. Insert your sewing needle under the first horizontal bar between the first two stitches on the edge you want to join. Pull the yarn through and insert the needle through the opposite horizontal bar on the other piece. Sew back and forth through the horizontal bars along the edge. To tighten the stitches, pull the yarn gently - and they will disappear.



## Weaving in the ends

Weave the ends of your yarn into your knitting to finish it off and stop it from unravelling. Thread the tail onto the sewing needle. Weave the yarn along the edge of your knitting as shown in the diagram. Weave in approximately 10 cm/4", then cut the tail.



# NOTES

.....

.....

.....

.....

.....

.....

.....

.....

.....

.....

.....

.....

.....

.....

.....

.....

.....

.....

.....

.....

.....

.....

.....

5 CM

10 CM





1"

2"

3"

4"

5"





GANGS 'N' ROSES BEANIE

**FIND THIS PRODUCT ON OUR WEBSITE**

**[WWW.WOOLANDTHEGANG.COM](http://WWW.WOOLANDTHEGANG.COM)**

#  
**SHARE  
YOUR  
KNITS**