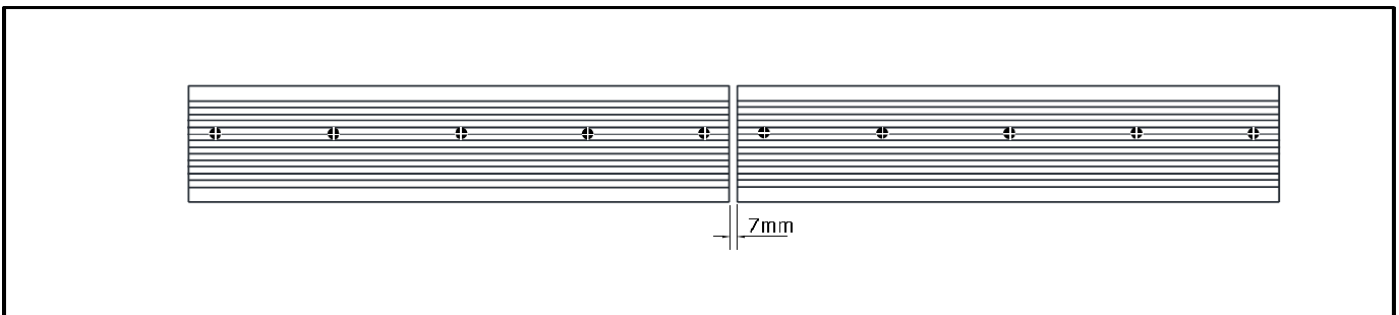
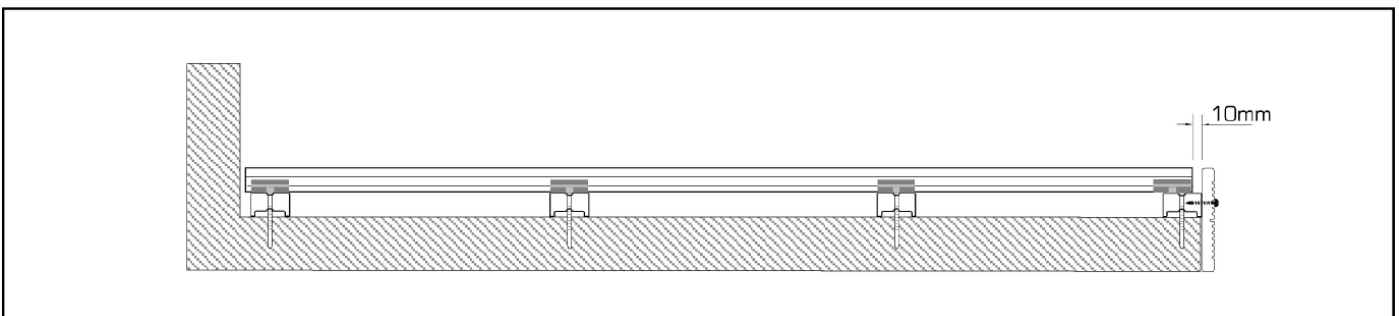
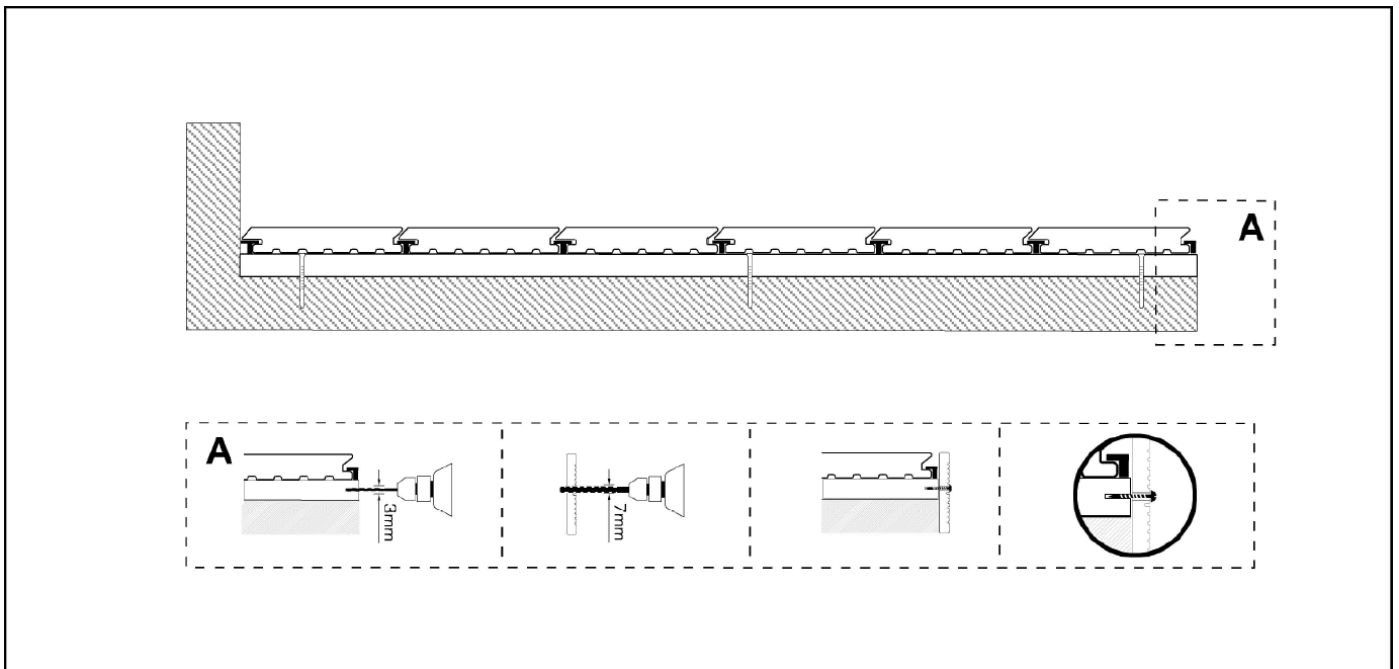
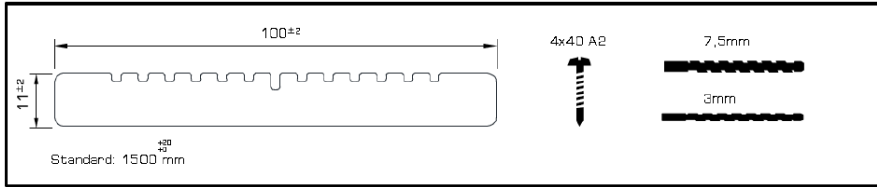


## TREKKER FASCIA INSTALLATION



## CARE & MAINTENANCE

A composite deck will expand under exposure to elevated temperatures. It may be necessary to periodically adjust the spacing of the deck, dependent on the installation area.

Expansion gaps should be kept clean to facilitate the flow of rainwater and water from washing.

In case of spillage of liquids, sauces or other substances that may foul the deck, they shall be removed immediately. If not, the deck can absorb these substances, and removing the stains will be harder.

If there is need to eliminate dirt, spots or scratches in the deck, you can use sandpaper. The sanded area will present a lighter shade, but with natural exposure, the colour should be uniform.

General cleaning of the deck should be undertaken with clean water. You can use a thick broom in order to clean the surface. Alternatively, you can use a pressure washer machine (water pressure should not exceed 6 bar) using a jet fan with the proper distance to the deck (so the water won't scratch the deck). The correct dilution of Trekker Maintenance Cleaner can be used for a more intensive clean.

Natural tonal change may occur in the deck in the first weeks (10 to 12 weeks) of exposure. This discoloration varies naturally with the UV light exposure of the product. In areas with less exposure, discoloration will naturally be lower. There should be no standing water on the deck after a period of rain. Standing water areas mean improper installation, which should be rectified.

Frequently check the substructure in order to ensure that it is unhindered for good water drainage. The deposit and stagnation of water in the base, causes the putrefaction of the base and of the elements installed there.

If food deposits are left on the deck surface for a prolonged period, there is inadequate drainage or consistently damp conditions in an area shaded under trees/by neighbouring buildings, then there is the potential for fungal growth.

For fungus to grow on the surface of Composite Decking it requires several elements. These include:

- Food; this can be anything from an accumulation of dirt, leaf mould or any organic material build-up.
- Shade; from trees, garden furniture or surrounding buildings, etc.
- Moisture; a lack of fall in the decking installation can lead to standing surface water for prolonged periods.

A combination of any of these elements can provide a habitat for fungal growth.

The solution to fungal growth is to use a fungicidal cleaner, such as 'Wet and Forget'. Start by thoroughly covering the area with Wet & Forget via spray application and leave to work. It should be noted that, while Wet & Forget will clear the decking mould/fungal growth and eradicate the fungal spores, it should not be treated as an alternative to a regular cleaning routine.

We don't recommend using a power/jet washer to try to remove growth because it may force spores deeper into the material.

*©This information Sheet was written by Havwoods International, Carnforth Business Park, Oakwood Way, Carnforth, Lancashire, LA5 9FD.*

*At the time of writing and publication of this sheet, all information is specified correctly. The photographs used in this sheet are intended only as illustrations. No rights can be derived from them.*

30/03/2020

**Havwoods International, Carnforth Business Park, Oakwood Way, Carnforth, Lancashire, LA5 9FD**

**Tel: +44 (0)1524 737 000**

**Fax: +44 (0)1524 737 001**

**Email: [info@havwoods.com](mailto:info@havwoods.com)**

**[www.havwoods.com](http://www.havwoods.com)**