

Designed for **Africa.**

Built for **Africa.**

Priced for **Africa.**



IMPACT MAX G
Education



Key Features



Our patented Super Glide Touch technology offers the most fluid writing experience



Never run out of space with our infinite whiteboard



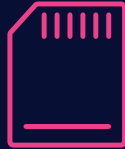
M Series is powered by Android 11



Clevershare screen mirroring allows you to share images, video and audio



Remote management MDM



4GB RAM
32GB ROM



LYNX Whiteboarding made easy with a huge selection of pen & art tools to use



Cyber Essentials compliant



Connect your Cloud accounts to work from anywhere



Built-in array microphone - all lessons can be recorded with sound



Huge connectivity including one of the latest USB-C ports with charging ability



2 x high powered 16W speakers for crystal clear sound quality

Add a camera and an onboard PC to create a hybrid learning space or conduct online sessions



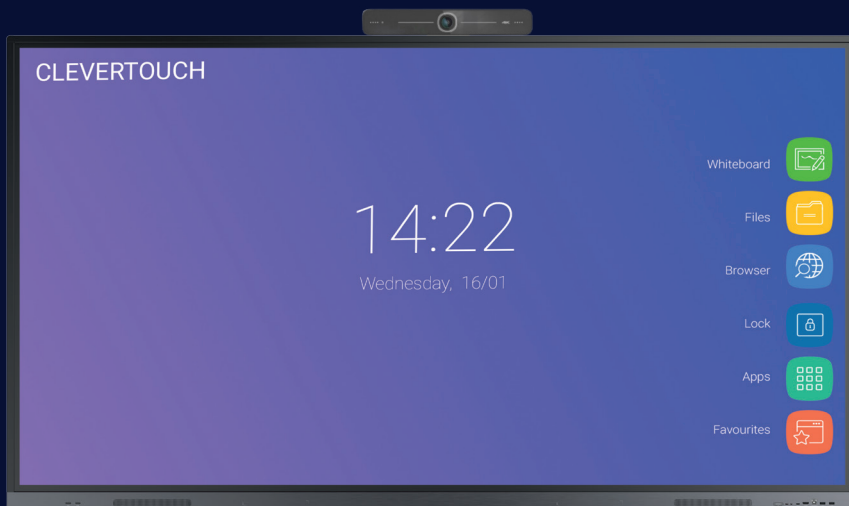
4K ultra-high definition AI camera, with a sleek eye-catching design and auto-tracking functionality.

This camera can be secured to the screen to function as a built-in camera



**i5 or i7 Windows 10
Choose from 8GB or 16GB RAM**

Delivering a truly intuitive and collaborative experience, IMPACT Max G is an interactive screen with unlimited possibilities. Combines high-quality design, functionality, durability, native screen sharing and 4K resolution.



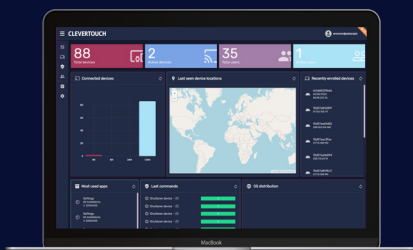
Quick Launch Menu for instant teaching tools

Your most commonly used apps are available with one touch and are easily accessible via the Quick Launch Menu.

Snapplify.com
EDUCATION

Now available in the Cleverstore

Software included at no extra cost



Your IT team can control, update and troubleshoot a fleet of Clevertouch screens without entering the classroom, ensuring your teachers always have the latest versions of apps and software when teaching.



Any device can download the Clevershare app and connect instantly by typing in the code on the Clevertouch screen. Clevershare App is free to download and compatible with Android, Windows, iOS, and Chrome devices.



LYNX Whiteboard is a free-to-use lesson building app, enabling student collaboration. The most dynamic, intuitive user experience of any whiteboard

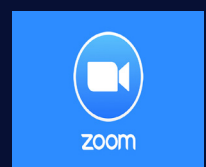
Compatible with all platforms



Google Classroom



Microsoft Education



IMPACT Max G Specifications

Display

Diagonal Size	65" 4K, 75" 4K, 86" 4K
Screen Type	TFT LCD - Direct LED Backlight
Aspect Ratio	16:9
Display Colours	1.07 Billion (10 bit)
Resolution	4K UHD (3840x2160 @60Hz)
Response Time	5ms
Refresh Rate	60Hz
LCD Viewing Angle	178°
Brightness	450 cd/m2
Contrast Ratio	65" 4000:1 75" 5000:1 86" 4000:1
Dynamic Contrast Ratio	65" 6000:1 75" 6000:1 86" 6000:1
Glass Hardness	Tempered Glass - Mohs Level 7
Glass Thickness	3mm
Glass Type	Low Parallax 1mm Air Gap - Heat tempered
Main Board	Amlogic T982 (SoC)
Life of Screen	50,000 Hours
NTSC	65" 72% 75" 72% 86" 68%

Interactivity

Writing Technology	High Precision IR Technology
Continuous Touch Points	20
Touch Resolution	32768x32768px
Response Time	≤5ms
Touch Accuracy	1mm
Minimum Object Size	3mm
Touch Tool	Finger, passive pen, opaque objects
Simultaneous Writing	Yes
Ink In Tools	Yes - Lynx
Pens Included	2
Pen Type	Dual Recognition Stylus Super Cool Stylus
Pen Holder	Integrated magnetic pen holders
Pen Tip Diameter	3mm/7mm
Pen & Touch Differentiation	Yes
Pen Identities	2
Palm Rejection	Yes
Annotation Over Any Source	Yes
Classroom Essential Apps	Includes Whiteboard, Annotate, Timer, Media Players, Browser, PDF Reader, Screen Record, Spinner, Voting, Maths Tools
Compatibility*	Windows 10, Linux, Mac, Android, Chrome
Tracking Rate	≥1m/s
Scan Rate	200Hz
Gestures & Edge Swipes	Windows Supported, OSX With additional Driver

Connectivity

OPS Slot	1 - Intel Spec 80Pin
HDMI In	3
HDMI Out	1
USB-A 2.0	1
USB Touch (type B)	2
USB A 3.0 (Faster Data Transfer)	4
USB C (Video, Audio & Touch)	1 (supports 65W charging)
LAN In (RJ45)	1 GB
LAN Out (RJ45)	1
RS-232	1
Wake-on-Lan	Yes
Wireless Adapter 2.0 + WAP	Yes
Clevertouch WiFi Module	Yes
Bluetooth	Yes 5.0
Displayport In	No
VGA In	1
Audio In	1
Optical Out	1
Headphone	1 (3.5mm)
Total touch out ports	2
NFC Reader / Writer	Optional Extra
Camera	Optional Extra
Proximity Sensor	No
Array Mic	6
WiFi	IEEE 802.11a/b/g/n/ac/ax with 2 × 2 MIMO (hotspot only) (both 2.4 and 5 GHz bands)
WiFi Speed	Capable of speeds up to 433Mbps

Computing

Operating System	Android 11
System Version	LUX 11
RAM	4GB
Internal Storage	32GB
CPU	Quad Core A55
GPU	Mali G52MP2
Android Resolution	4K
Android Module Slot	No
System Architecture	32-bit
Integrated LUX UI	Yes

Power

Power Requirements	100-240V ~ 50/60Hz
Power Consumption (Standby)	≤0.5W
Ultra Quiet Fanless Design	Yes
Power Consumption	65" 178 Watts 75" 183 Watts 86" 195 Watts

IMPACT Max G Specifications

Audio

Dual Front Facing, Bass Enhanced Speakers	2 x 16W
Audio Out	Yes
SPDIF / Fibre	Yes
Sound Channel	2
Line Array Microphone	Yes
Super Wide Sound	No

Operating & Storage Environment

Operating Temperature	0° to 40°
Storage Temperature	-20° to 60°
Operating Humidity	10% to 90% RH
Storage Humidity	10% to 90% RH
Altitude	Below 5000 metres

Physical Spec

Panel Dimensions	65" 1489x906x87mm 75" 1709x1013x88mm 86" 1957x1168x88mm
Packed Dimensions	65" 1628x208x1005mm 75" 1863x225x1148mm 86" 2110x225x1291mm
Net Weight	65" 35.9kg 75" 47.75kg 86" 62.9kg
Packed Weight	65" 46.25kg 75" 61.9kg 86" 80.6kg
VESA Mount Point	65" 600x400mm 75" 800x400mm 86" 800x600mm

Inside your Clevertouch Box

What's In The Box	(1) Clevertouch M Series 3 (1) 1.5M Length HDMI Cable (1) 3M Length USB cable (A-B) (1) 1.5M USBC Cable (1) 3M Regional Power Cable (1) Remote Control (2) Batteries for Remote Control (2) Dual Recognition Stylus (1) User Guide (1) Quick Install Guide (1) Clevertouch WiFi Module
-------------------	--

Built-In Features

LYNX™ App With Online Lesson Planning	Yes
Clevershare™ Mirroring Any Device To The Board	Free for the life of the screen (touch back)
Integrated Personalised Accounts Profiles	Yes
Cloud Account Access	OneDrive, Google Drive
Whiteboard Annotation	Yes
Email Out Direct From Touchscreen	Yes
Scan QR Code For Saving Work	Yes
Remote Management Of Touchscreens (MDM)	Yes - Five year license

Warranty

Warranty term and upgrade options vary by region. Contact your local reseller or distributor for information

Compliance & Certification

Regulatory Certification	CE, FCC, UL, Energy Star & EEC
--------------------------	--------------------------------



Statement

Size and weight vary by configuration and manufacturing process, please refer to the actual product. The product images are for illustrative purposes only and may slightly differ in appearance, colour, size, etc. from the actual product. The description, illustrations, etc. in this document may subject to change in accordance with the latest product specification and performance. Should the above-mentioned change in the document become necessary, the document may be updated without written notice.