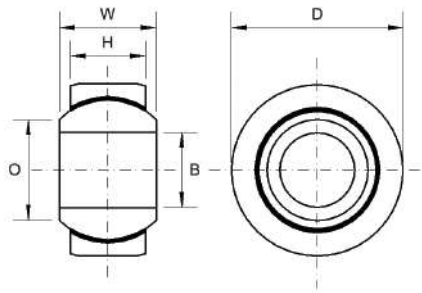


**SP SERIES: MAINTENANCE FREE (METRIC)**



**Outer Ring:** Steel 230M07Pb, Chemi-Blackened  
**Race:** GR-nylon, LV-3H.  
**Ball:** Bearing Steel 100Cr6, Hardened and Electro-less Nickel Plated  
**Specification:** ELV and RoHS compliant.

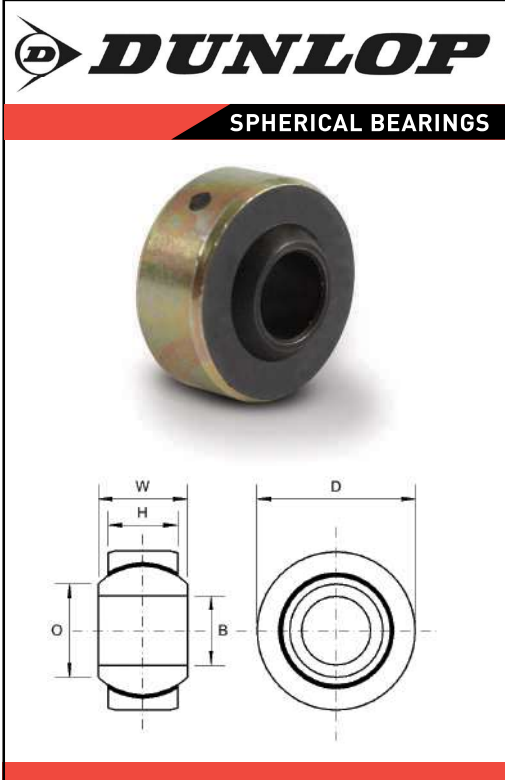


Part No.	Bore Size	W	H	D	O	Static Load Rating (Newtons) Radial
SP-M03	3	6	4.50	16	5.20	3,040
SP-M04-3	3	7	5.00	18	6.30	4,060
SP-M04	4	7	5.00	18	6.30	4,060
SP-M05-4	4	8	6.00	16	7.50	5,340
SP-M05	5	8	6.00	16	7.50	5,340
SP-M06-5	5	9	6.75	18	9.30	7,720
SP-M06	6	9	6.75	18	9.30	7,720
SP-M08-6	6	12	9.00	22	10.40	12,775
JBS 8N	8	12	7.90	22	10.40	12,775
SP-M08	8	12	9.00	22	10.40	12,775
SP-M10-8	8	14	10.50	26	12.90	16,960
JBS 10N	10	14	9.50	26	12.90	16,960
SP-M10	10	14	10.50	26	12.90	16,960
SP-M12-10	10	16	12.00	30	15.40	22,900
SP-M12	12	16	12.00	30	15.40	22,900
SP-M14-12	12	19	13.50	34	16.80	28,950
SP-M14	14	19	13.50	34	16.80	28,950
SP-M16-14	14	21	15.00	38	19.30	37,130
SP-M16	16	21	15.00	38	19.30	37,130

**SP SERIES: MAINTENANCE FREE (IMPERIAL)**

Part No.	Bore Size	W	H	D	O	Static Load Rating (Newtons) Radial
SP-03	3/16	0.281	0.218	0.5625	0.293	4,900
SP-04-03	3/16	0.343	0.250	0.6562	0.364	7,150
SP-04	1/4	0.343	0.250	0.6562	0.364	7,150
SP-05-04	1/4	0.375	0.281	0.7500	0.419	12,000
SP-05	5/16	0.375	0.281	0.7500	0.419	12,000
SP-06-05	5/16	0.406	0.312	0.8125	0.475	13,090
SP-06	3/8	0.406	0.312	0.8125	0.475	13,090
SP-07-06	3/8	0.437	0.343	0.9062	0.530	16,100
SP-07	7/16	0.437	0.343	0.9062	0.530	16,100
SP-08-07	7/16	0.500	0.390	1.0000	0.600	19,250
SP-08	1/2	0.500	0.390	1.0000	0.600	19,250
SP-10-08	1/2	0.625	0.500	1.1875	0.739	30,250
SP-10	5/8	0.625	0.500	1.1875	0.739	30,250

For stainless steel add 'SS' to part no. For example 'SP-M10-SS'



**SPH SERIES**

**Description:**

SPH-Series is our 3-piece unique Internationally patented range of spherical bearings incorporating a Grilamid bearing race that provides ultra smooth operation. A nitrotec surface protected ball with a PTFE lubricant provide superior shock load and extended wear properties combined with excellent chemical and corrosion resistance. The unique innovative captive body design prevents detachment through excessive axial loads.

**Material Specifications:**

Outer ring: Steel 230M07PB zinc plated and clear trivalent passivate. Race: Grilamid L20LF. Ball: 230M07PB nitrotec finish.

**Features:**

- Metric bore sizes
- Safety features applications
- High shock loads
- Extended wear life
- No maintenance

**Possible Applications:**

- Light to medium industrial/mechanical
- Construction equipment
- Agricultural equipment
- Recreational vehicles
- High precision motion control

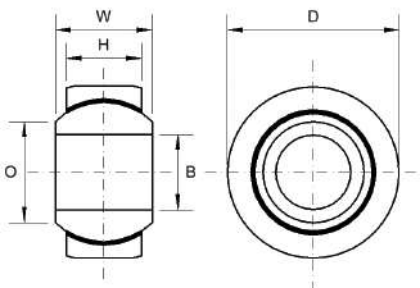
**Temperature Range:**

-40°C to +80°C

**Specification:**

ELV and RoHS compliant

**SPH SERIES: MAINTENANCE FREE (METRIC)**



- Outer Ring:** Steel 230M07Pb, Zinc Plated and Clear Trivalent Passivate
- Race:** Grilamid L20LF.
- Ball:** 230M07Pb, Nitrotec Surface Protection
- Lubricant:** Uniflor oil.
- Specification:** ELV and RoHS compliant.



Part No.	Bore Size	W	H	D	O	Static Load Rating (Newtons) Radial
SPH-M06	6	9	6.75	18	9.30	9,300
SPH-M08	8	12	9.00	22	10.40	14,100
JBS8H	8	12	7.90	22	10.40	14,100
SPH-M10	10	14	10.50	26	12.90	18,690
JBS10H	10	14	9.50	26	12.90	18,690
SPH-M12	12	16	12.00	30	15.40	24,555
SPH-M14	14	19	13.50	34	16.80	34,650
SPH-M16	16	21	15.00	38	19.30	41,250

For stainless steel add 'SS' to part no. For example 'SPH-M06-SS'