



SPHERICAL BEARINGS



GXSW-SS-SERIES

Description:

GXSW SS-Series is our 2-piece metric range of general purpose spherical plain bearings incorporating a thin PTFE fabric between the ball and the outer ring, suitable for high shock loads and medium to heavy industrial/mechanical load applications requiring low friction. They do not require maintenance.

Material Specifications:

Outer ring: Stainless steel 304L. Ball: Stainless steel 440C.
Liner: High temperature PTFE composite.

Features

- Metric bore sizes
- Low friction
- High shock loads
- Extended wear life
- No maintenance

Possible Applications

- Medium/heavy industrial/mechanical Construction equipment
- Agricultural equipment
- Recreational vehicles
- High precision motion control

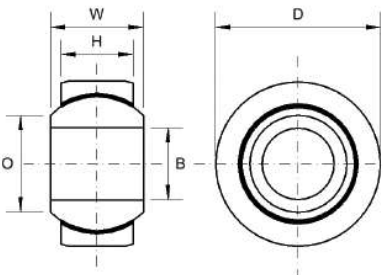
Temperature Range

-200°C to +260°C

Specification

ELV & RoHS compliant

GXSW SERIES: MAINTENANCE FREE (METRIC)

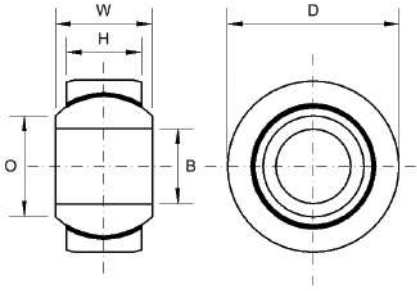


- Outer Ring:** Stainless Steel 304
- Ball:** Stainless Steel 440C
- Liner:** High Temperature PTFE Composite
- Specification:** ELV and RoHS Compliant



Part No.	Bore Size	W	H	D	C	Static Load Rating (Newtons) Radial
GXSW-M05-SS	5	8	6.00	13	1x15°	12,500
GXSW-M06-5SS	5	9	6.75	15	1x15°	15,500
GXSW-M06-SS	6	9	6.75	15	1x15°	15,500
GXSW-M08-6SS	6	12	9	18	1.2x15°	27,800
GXSW-M08-SS	8	12	9	18	1.2x15°	27,800
GXSW-M10-8SS	8	14	10.5	21	1.2x15°	39,000
GXSW-M10-SS	10	14	10.5	21	1.2x15°	39,000
GXSW-M12-10SS	10	16	12	24.5	1.2x15°	53,500
GXSW-M12-SS	12	16	12	24.5	1.2x15°	53,500
GXSW-M14-12SS	12	19	13.5	28	1.5x15°	70,000
GXSW-M14-SS	14	19	13.5	28	1.5x15°	70,000
GXSW-M16-14SS	14	21	15	31.5	1.5x15°	88,000
GXSW-M16-SS	16	21	15	31.5	1.5x15°	88,000
GXSW-M18-16SS	16	23	16.5	34.5	1.5x15°	106,500
GXSW-M18-SS	18	23	16.5	34.5	1.5x15°	106,500
GXSW-M20-18SS	18	25	18	38	1.5x15°	130,000
GXSW-M20-SS	20	25	18	38	1.5x15°	130,000
GXSW-M22-20SS	20	28	20	41	1.5x15°	162,000
GXSW-M22-SS	22	28	20	41	1.5x15°	162,000
GXSW-M25-SS	25	31	22	46	1.5x15°	204,000
GXSW-M25-20SS	20	31	22	46	1.5x15°	204,000

GXSW SERIES: MAINTENANCE FREE (IMPERIAL)



- Outer Ring:** Stainless Steel 304
- Ball:** Stainless Steel 440C
- Liner:** High Temperature PTFE Composite
- Specification:** ELV and RoHS Compliant



Part No.	Bore Size	W	H	D	C	Static Load Rating (Newtons) Radial
GXSW-04-SS	1/4	0.375	0.281	0.6094	0.039x15°	24,000
GXSW-05-4SS	1/4	0.437	0.344	0.7500	0.047x15°	41,200
GXSW-05-SS	5/16	0.437	0.344	0.7500	0.047x15°	41,200
GXSW-06-5SS	5/16	0.500	0.406	0.8437	0.047x15°	58,900
GXSW-06-SS	3/8	0.500	0.406	0.8437	0.047x15°	58,900
GXSW-07-6SS	3/8	0.562	0.437	1.000	0.047x15°	68,950
GXSW-07-SS	7/16	0.562	0.437	1.000	0.047x15°	68,950
GXSW-08-7SS	7/16	0.625	0.500	1.0937	0.059x15°	79,000
GXSW-08-SS	1/2	0.625	0.500	1.0937	0.059x15°	79,000
GXSW-10-8SS	1/2	0.750	0.562	1.3125	0.059x15°	124,600
GXSW-10-SS	5/8	0.750	0.562	1.3125	0.059x15°	124,600
GXSW-12-10SS	5/8	0.875	0.687	1.500	0.059x15°	183,400
GXSW-12	3/4	0.875	0.687	1.500	0.059x15°	183,400

