



SPHERICAL BEARINGS



GXSW SERIES

Description:

GXSW Series is our 2-piece metric range of general purpose spherical plain bearings incorporating a thin PTFE fabric between the ball and the outer ring, suitable for high shock loads and medium to heavy industrial/mechanical load applications requiring low friction. They do not require maintenance.

Material Specifications:

Outer ring: Steel 070M20, zinc plated and clear trivalent passivate.
 Ball: Bearing steel 100Cr6, hardened and electro-less nickel plated.
 Liner: High temperature PTFE composite.

Features

Metric bore sizes
 Low friction
 High shock loads
 Extended wear life
 No maintenance

Possible Applications

Medium/heavy industrial/mechanical
 Construction equipment
 Agricultural equipment
 Recreational vehicles
 High precision motion control

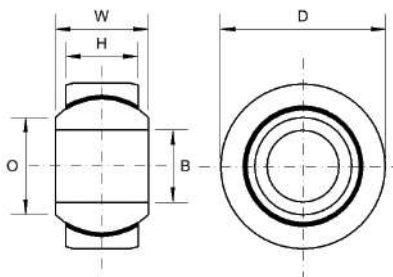
Temperature Range

-200°C to +260°C

Specification

ELV & RoHS compliant

GXSW SERIES: MAINTENANCE FREE (METRIC)



- Outer Ring:** Steel 070M20, Zinc Plated and Clear Trivalent Passivate
- Ball:** Bearing Steel 100Cr6, Hardened and Electro-less Nickel Plated
- Liner:** High Temperature PTFE Composite
- Specification:** ELV and RoHS Compliant



Part No.	Bore Size	W	H	D	C	Static Load Rating (Newtons) Radial
GXSW-M05	5	8	6.00	13	1x15°	12,500
GXSW-M06	6	9	6.75	15	1x15°	15,500
GXSW-M08	8	12	9	18	1.2x15°	27,800
GXSW-M10	10	14	10.5	21	1.2x15°	39,000
GXSW-M12	12	16	12	24.5	1.2x15°	53,500
GXSW-M14	14	19	13.5	28	1.5x15°	70,000
GXSW-M16	16	21	15	31.5	1.5x15°	88,000
GXSW-M18	18	23	16.5	34.5	1.5x15°	106,500
GXSW-M20	20	25	18	38	1.5x15°	130,000
GXSW-M22	22	28	20	41	1.5x15°	162,000
GXSW-M25	25	31	22	46	1.5x15°	204,000

GXSW SERIES: MAINTENANCE FREE (IMPERIAL)

Part No.	Bore Size	W	H	D	C	Static Load Rating (Newtons) Radial
GXSW-04	1/4	0.375	0.281	0.6094	0.039x15°	15,500
GXSW-05	5/16	0.437	0.344	0.7500	0.047x15°	27,800
GXSW-06	3/8	0.500	0.406	0.8437	0.047x15°	39,000
GXSW-07	7/16	0.562	0.437	1.000	0.047x15°	44,000
GXSW-08	1/2	0.625	0.500	1.0937	0.059x15°	53,500
GXSW-10	5/8	0.750	0.562	1.3125	0.059x15°	88,000
GXSW-12	3/4	0.875	0.687	1.500	0.059x15°	130,000