



GE-SX SERIES

Description:

GE-SX-Series is our 2 piece metric range of angular contact bearings. Ball and race sliding surfaces are phosphate treated for increased lubricity. A lubrication groove is provided on the raceway for applications requiring re-lubrication after installation.

Material Specification:

Outer Ring: Bearing Steel 100Cr6, hardened and phosphate. Ball: Bearing Steel 100Cr6, hardened and phosphate.

Features:

Metric bore sizes
Low cost
Maintenance required
Up to 140mm bore sizes available

Possible Applications:

Light to heavy industrial/mechanical applications
Construction equipment
Agricultural equipment
Hydraulic applications

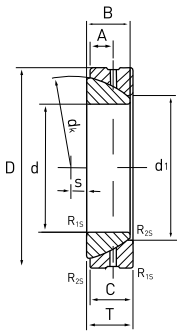
Temperature Range:

-54°C to +121°C

Specification:

ELV & RoHS compliant

GE-SX SERIES: MAINTENANCE REQUIRED (METRIC)



Outer Ring: Bearing Steel 100Cr6, Hardened, Phosphate
Ball: Bearing Steel 100Cr6, Hardened, Phosphate
Specification: ELV and RoHS Compliant



Part No.	Dimensions mm												Weight kg	
	d	D	T	dk	d ₁	B	C	S	A	R _{15 min}	R _{25 min}	dyn. C	stat. Co	
GE 25 SX	25	47	15	42.5	31.4	14	14	1	7.5	0.6	0.2	47.5	236	0.13
GE 28 SX	28	52	16	47	35.7	15	15	1	8	1.0	0.3	60	300	0.17
GE 30 SX	30	55	17	50	36.1	16	16	2	8.5	1.0	0.3	63	315	0.21
GE 32 SX	32	58	17	52	37.5	17	16	2	8.5	1.0	0.3	71	354	0.24
GE 35 SX	35	62	18	56	42.4	17	17	2	9	1.0	0.3	76.5	390	0.27
GE 40 SX	40	68	19	60	46.8	18	18	1.5	9.5	1.0	0.3	90	450	0.32
GE 45 SX	45	75	20	66	52.9	19	19	1.5	10	1.0	0.3	106	530	0.41
GE 50 SX	50	80	20	74	59.1	19	19	4	10	1.0	0.3	118	585	0.45
GE 55 SX	55	90	23	80	62	22	22	4	11.5	1.5	0.6	146	735	0.67
GE 60 SX	60	95	23	86	68.1	22	22	5	11.5	1.5	0.6	160	800	0.72
GE 65 SX	65	100	23	92	75.6	22	22	5	11.5	1.5	0.6	173	865	0.76
GE 70 SX	70	110	25	102	82.2	24	24	7	12.5	1.5	0.6	208	1040	1.0
GE 75 SX	75	115	25	107	84.4	25	24	7.9	12.5	1.5	0.6	220	1129	1.1
GE 80 SX	80	125	29	115	90.5	27	27	10	14.5	1.5	0.6	250	1250	1.5
GE 85 SX	85	130	29	122	94.8	29	26.5	9.4	14.5	1.5	0.6	284	1422	1.6
GE 90 SX	90	140	32	130	103.3	30	30	11	16	2.0	0.6	320	1600	2.1
GE 95 SX	95	145	32	135	104.4	32	29.5	10.8	16	2.0	0.6	335	1750	2.2
GE 100 SX	100	150	32	140	114.3	30	30	12	16	2.0	0.6	345	1760	2.3
GE 105 SX	105	160	35	148	113.8	35	32.5	12.3	17.5	2.0	0.6	423	2116	2.9
GE 110 SX	110	170	38	160	125.8	36	36	15	19	2.5	0.6	475	2360	3.6
GE 120 SX	120	180	38	170	135.4	36	36	17	19	2.5	0.6	510	2550	3.9
GE 130 SX	130	200	45	190	148	42	42	20	22.5	2.5	0.6	640	3200	5.9
GE 140 SX	140	210	45	200	160.6	42	42	20	22.5	2.5	0.6	680	3450	6.3
GE 150 SX	150	225	48	213	170.9	45	45	21	24	3.0	1.0	780	3900	7.7
GE 160 SX	160	240	51	225	181.4	48	48	21	25.5	3.0	1.0	900	4500	9.4
GE 170 SX	170	260	57	250	194.3	54	54	27	28.5	3.0	1.0	1100	5500	12.0
GE 180 SX	180	280	64	260	205.5	61	61	21	32	3.0	1.0	1320	6700	17.0
GE 190 SX	190	290	64	275	211.8	61	61	29	32	3.0	1.0	1370	6950	18.0
GE 200 SX	200	310	70	290	229.2	66	66	26	35	3.0	1.0	1560	7800	22.5