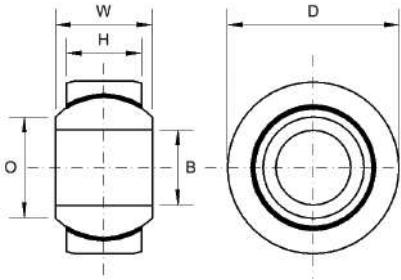




SPHERICAL BEARINGS



**GE-FW-SERIES**

**Description:**

GE-FW-Series is our 2-piece metric range of general purpose spherical plain bearings incorporating a thin PTFE fabric between the ball and the outer ring, suitable for high shock loads and medium to heavy industrial/mechanical load applications requiring low friction, they do not require maintenance.

**Material Specifications:**

Outer ring: Bearing steel 100Cr6, case hardened. Ball: Bearing steel 100Cr6, hardened and electro-less nickel plated. Liner: PTFE fabric. Seals: Polyurethane.

**Features:**

- Metric bore sizes
- Low friction
- High shock loads
- Extended wear life
- No maintenance

**Possible Applications:**

- Medium/heavy industrial/mechanical applications
- Construction equipment
- Agricultural equipment
- Recreational vehicles
- High precision motion control

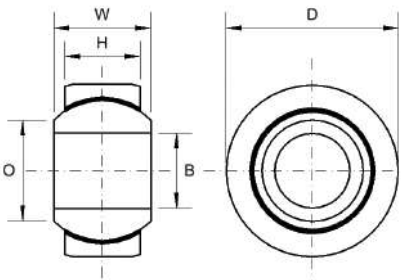
**Temperature Range:**

-53°C to +121°C

**Specification:**

ELV & RoHS compliant

**GE-FW SERIES: MAINTENANCE FREE (METRIC)**



- Outer Ring:** Bearing Steel 100Cr6, Hardened
- Race:** Bearing Steel 100Cr6, Hardened and Electro-less Nickel Plated
- Ball:** PTFE Fabric
- Specification:** ELV and RoHS Compliant



Part No. Unsealed	Part No. Sealed	Bore Size	W	H	D	Static Load Rating (Newtons) Radial
GE6FW		6	9	5	16	14,000
GE8FW		8	11	6	19	21,000
GE10FW		10	12	7	22	28,000
GE12FW		12	15	9	26	45,000
GE15FW		15	16	10	30	56,000
GE17FW		17	20	12	35	78,000
GE20FW		20	25	16	42	127,000
GE25FW		25	28	18	47	166,000
GE30FW	GE30FW-2RS	30	32	20	55	350,000
GE35FW	GE35FW-2RS	35	35	22	62	462,000
GE40FW	GE40FW-2RS	40	40	25	68	600,000
GE45FW	GE45FW-2RS	45	43	28	75	737,000
GE50FW	GE50FW-2RS	50	56	36	90	1,150,000
GE60FW	GE60FW-2RS	60	63	40	105	1,475,000
GE70FW	GE70FW-2RS	70	70	45	120	1,875,000
GE80FW	GE80FW-2RS	80	75	50	130	2,300,000
GE90FW	GE90FW-2RS	90	85	55	150	2,862,000
GE100FW	GE100FW-2RS	100	85	55	160	3,075,000

For stainless steel add 'SS' to part no. For example 'GE6FW-SS'