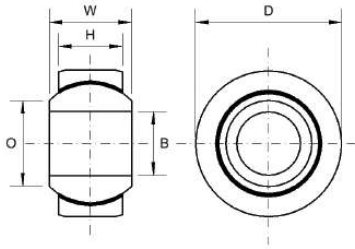




SPHERICAL BEARINGS



GE-ES SERIES

Description:

GE-ES-Series is our 2-piece fractured outer ring metric range of spherical plain bearings used in non rotational applications. Ball and race sliding surfaces are treated with MoS₂ for increased lubricity on wear surface. A lubrication groove is provided on the raceway for applications requiring re-lubrication after installation.

Material Specifications:

Outer ring: Bearing steel 100Cr6, hardened and manganese phosphate, treated with MoS₂. Ball: Bearing steel 100Cr6, hardened and manganese phosphate. Seals: Polyurethane.

Features:

- Metric bore sizes
- Low cost
- Maintenance required
- Up to 140mm bore sizes available

Possible Applications:

- Light to heavy industrial/mechanical applications
- Construction equipment
- Agricultural equipment
- Hydraulic applications

Temperature Range:

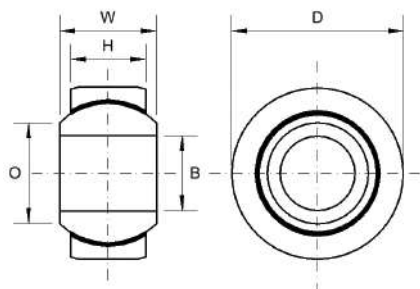
-54°C to +121°C

Specification:

ELV & RoHS compliant



GE-ES SERIES: MAINTENANCE REQUIRED (METRIC)



- Outer Ring:** Bearing Steel 100Cr6, Hardened and Manganese Phosphate, wear faces treated with MoS2.
- Ball:** Bearing Steel 100Cr6, Hardened and Manganese Phosphate
- Seals:** Polyurethane
- Specification:** ELV and RoHS Compliant



Part No. Unsealed	Part No. Sealed	Bore Size	W	H	D	Static Load Rating (Newtons) Radial
GE06ES	GE06ES-2RS	6	6	4	14	17,000
GE08ES	GE08ES-2RS	8	8	5	16	27,500
GE10ES	GE10ES-2RS	10	9	6	19	40,500
GE12ES	GE12ES-2RS	12	10	7	22	54,000
GE15ES	GE15ES-2RS	15	12	9	26	85,000
GE17ES	GE17ES-2RS	17	14	10	30	106,000
GE20ES	GE20ES-2RS	20	16	12	35	146,000
GEH20ES	GEH20ES-2RS	20	25	16	42	240,000
GE25ES	GE25ES-2RS	25	20	16	42	240,000
GEH25ES	GEH25ES2-RS	25	28	18	47	310,000
GE30ES	GE30ES-2RS	30	22	18	47	310,000
GEH30ES	GEH30ES-2RS	30	32	20	55	400,000
GE35ES	GE35ES-2RS	35	25	20	55	400,000
GEH35ES	GEH35ES-2RS	35	35	22	62	500,000
GE40ES	GE40ES-2RS	40	28	22	62	500,000
GEH40ES	GEH40ES-2RS	40	40	25	68	640,000
GE45ES	GE45ES-2RS	45	32	25	68	640,000
GEH45ES	GEH45ES-2RS	45	43	28	75	780,000
GE50ES	GE50ES-2RS	50	35	28	75	780,000
GEH50ES	GEH50ES-2RS	50	56	36	90	1,220,000
GE60ES	GE60ES-2RS	60	44	36	90	1,220,000
GEH60ES	GEH60ES-2RS	60	63	40	105	1,560,000
GE70ES	GE70ES-2RS	70	49	40	105	1,560,000
GEH70ES	GEH70ES-2RS	70	70	45	120	2,000,000
GE80ES	GE80ES-2RS	80	55	45	120	2,000,000
GEH80ES	GEH80ES-2RS	80	75	50	130	2,450,000
GE90ES	GE90ES-2RS	90	60	50	130	2,450,000
GEH90ES	GEH90ES-2RS	90	85	55	150	3,050,000
GE100ES	GE100ES-2RS	100	70	55	150	3,050,000
GE110ES	GE110ES-2RS	110	70	55	160	3,250,000
GE120ES	GE120ES-2RS	120	85	70	180	4,750,000
GE140ES	GE140ES-2RS	140	90	70	210	5,400,000