

MADE IN THE SHADE

Australian Made Timber Umbrellas



AUSTRALIAN MADE
AND OWNED

www.madeintheshade.com.au

MADE IN THE
Shade



The best umbrellas under the sun!



The best umbrellas under the sun!



Features

- Designed for Australian conditions and handmade in Victoria
- Australian made with the highest quality, locally sourced materials available
- Simple and easy to open and close
- Victorian Ash Timber frame and pole
- New Zealand Beech Timber bosses
- Galvanised end caps
- Stainless steel fastenings and components
- Marine grade pulley system



Canopy

- 100% solution dyed acrylic fabrics
- Maintenance: All fabrics can be washed, re-waterproofed and are replaceable
- Shade Rating: UPF 50+
- Custom branding available



Mounting Options

* Choose from any Dulux Powder coated colour for an additional cost.



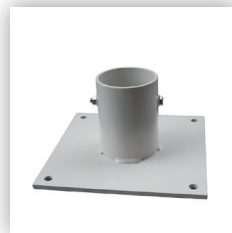
Regular Stand

Free standing, zinc-dipped and powder coated white. Can be used on most surfaces. Weight 25kg.



Mobile Stand

Regular stand available with lockable castors for easy manoeuvrability.



Under-Table Fitting

The under-table fitting is designed not to hold the umbrella up, but to keep the base of the pole centred in one spot once bolted to the ground.



Inground or Underdeck Sleeve

This 2-part system consists of a galvanized steel box to be concreted into the ground. Brackets can be added to the steel box for attachment under a deck. The umbrella sleeve (same design as the pipe for the regular stand) is zinc-dipped, and powder coated white. This sleeve fits into the steel box to sit flush with the ground or deck.



Umbrella-Lock

An aluminium device with a keyhole lid, coupled with a sleeve which is bolted to the end of the umbrella pole. The bottom section is concreted into the ground. When the two are fitted together, the Umbrella-Lock holds the umbrella firmly in position until it is deliberately released for removal.



Accessories



Storage Bags

Made of reinforced vinyl and suitable for outdoor use all year round. They protect your umbrella when not in use, thereby prolonging the life of the canvas.

The small size is recommended for sizes 7, 8, 9 and 12.

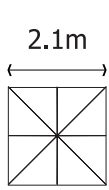
The large size is recommended for sizes 8, 9, 10, 12 and 14.



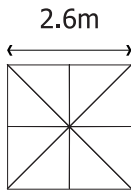
Sandbags

Made from the same durable black vinyl as the storage bags, the black sandbags, when filled, weigh 15kgs each and can be used to add extra weight to the metal stands.

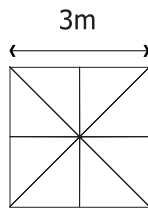
Size & Configuration



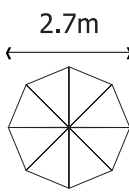
Size 7



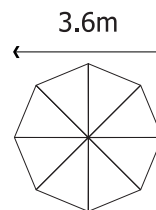
Size 8



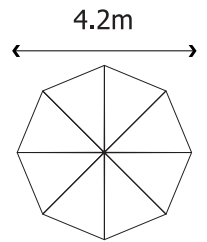
Size 10



Size 9



Size 12



Size 14

Umbrella Dimensions



Diagram Legend

	2.1m	2.6m	3.0m	2.7m	3.6m	4.2m
A Overall Height*	2450mm	2650mm	2650mm	2650mm	2650mm	2650mm
B Clearance of Closed Strut Arms*	960mm	800mm	530mm	1150mm	800mm	530mm
C Canopy Width*	2100mm	2600mm	3000mm	2700mm	3600mm	4200mm
D Head Clearance*	2000mm	2000mm	1900mm	2000mm	2100mm	1900mm
E Pole outside diameter	40mm	66mm	66mm	66mm	66mm	66mm

Note: All measurements are from within a stand and rounded and subject to change.

Removing the base will reduce measurements by 50mm. Adding a base with castors will add a further 100mm.



MADE IN THE
Shade

The best umbrellas under the sun!



MADE IN THE SHADE

Australian Made Timber Umbrellas

03 9785 1236

umbrella@madeintheshade.com.au

64 Brunel Road, Seaford, Victoria 3198 Australia

www.madeintheshade.com.au



AUSTRALIAN MADE
AND OWNED