

Gill™ Mask/ Gill™ Mask Pro Reusable Respirator

Gill™ Filter/ Gill™ Filter Pro

User Instructions (Keep these instructions for reference)

IMPORTANT

Before use, the wearer must read and understand these User Instructions. Keep these instructions for reference.



Warnings

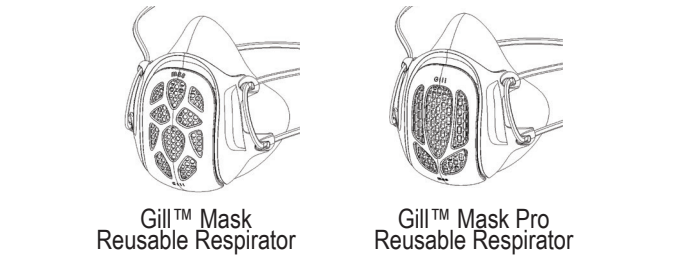
This respirator helps protect against certain particles. Misuse may result in sickness. Before use, the user must read and understand the user instructions. Keep these instructions for reference.

This respirator contains no components made from natural rubber latex

Product Descriptions

The Gill™ products include the following particle filtration half mask series:

Gill™ Mask Reusable Respirator/ Gill™ Mask Pro Reusable Respirator is a wearable half facepiece elastomeric respirator with a defining feature of allowing its user to exchange cartridges with self-selected filters.



Gill™ Filter/Gill™ Filter Pro is a single use, non-sterile, disposable filter designed to be used with Gill™ Mask Reusable Respirator and Gill™ Mask Pro Reusable Respirator.

Intended Use

Gill™ Mask/ Gill™ Mask Pro Reusable Respirator and Gill™ Filter/ Gill™ Filter Pro are intended to protect healthcare professionals and patients, as well as other wearers, by reducing the spread of airborne contaminants.

Do Not Use For

- Does not protect against gases or vapors.
- Not to be used by children.
- People with breathing difficulties, respiratory conditions or heart disease should consult a physician before use.
- Not for use with beards or other facial hair or conditions that prevent a good seal between the face and the sealing edge of the respirator.

User Instructions

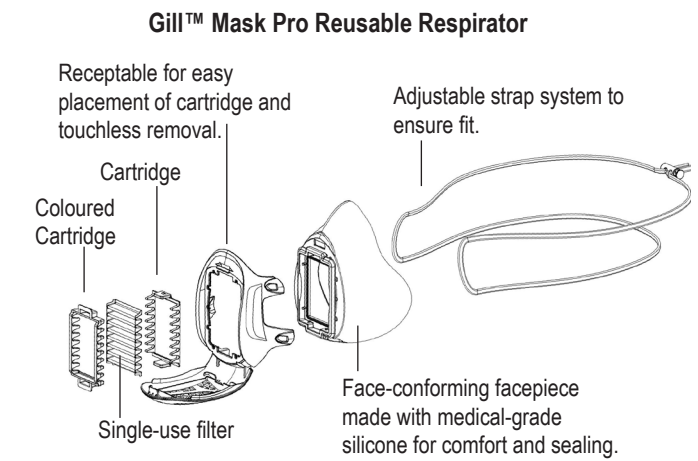
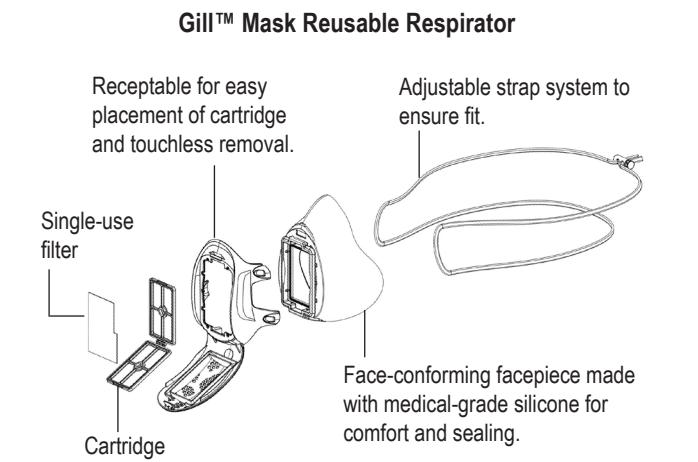
1. It is recommended to clean the respirator before use or on a daily basis. For cleaning instructions, please refer to the cleaning procedures below.
2. Before use, inspect all the parts including the facepiece, strap, door cover, casing, filter, and cartridges to ensure there are no signs of damage and they are assembled properly. If there are signs of damages, do not use the product.
3. Before use of this respirator, the employer or the user must ensure the proper fit and sealing.
4. Before use, ensure that the product is not expired otherwise discard.
5. Store the respirator and filter away from contaminated area when not in use.
6. Wash your hands before and after handling of the respirator and filter.

Assembly Instructions

Gill™ Mask/ Gill™ Mask Pro

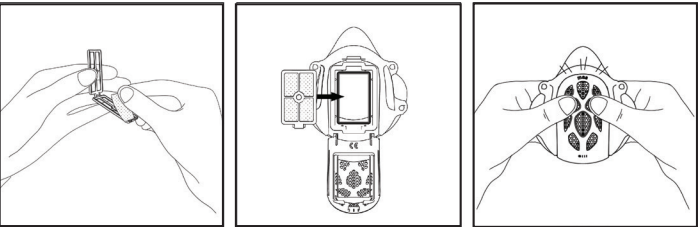
- Gill™ Mask/ Gill™ Mask Pro comes fully assembled. To disassemble the unit for thorough cleaning,
1. Open the door and remove the cartridge.
 2. Detach the silicone facepiece from the plastic casing by pushing through the silicone door frame behind the door.
 3. Remove the strap from the buckle and then remove the strap from the casing.

- To assemble the unit,
1. Attach the silicone facepiece back to the casing. Make sure the silicone door frame sits flushed over the plastic door frame.
 2. Loop the strap back to the casing. Make sure the strap ends are looped through the top holes of the plastic casing.
 3. Put the buckle back through the strap.
 4. Place the cartridge inside the door frame. Close the door



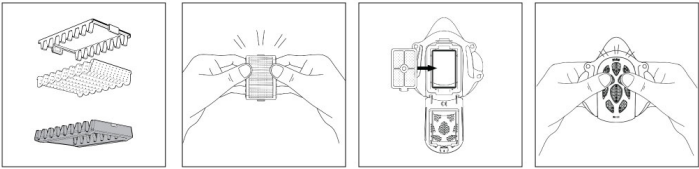
Gill™ Filter

1. Place the Gill™ filter in the cartridge and hold it in place.
2. Make sure the blue side of the Gill™ Filter S2 is facing outward. Either side of Gill™ Filter P95 can be placed facing outward.
3. Open the door of the respirator, place the assembled cartridge with the filter into the cavity. Close the door tightly.
4. To remove the used filter, open the cartridge to release the filter.



Gill™ Filter Pro

1. Place the gray cartridge on a flat surface.
2. Align the filter along the ridges of the gray cartridge and place it on top. Make sure the blue side of the Gill™ Filter Pro S2 faces down. Either side of Gill™ Filter P95 can be placed facing down. Make sure the filter fully covers the edges of the cartridge and there is no empty space along the edges.
3. Place the white cartridge over the filter and click the cartridges in place.
4. Open the door of the respirator, make sure the gray cartridge is facing out and place the assembled cartridges with the filter into the cavity. Close the door tightly.
5. To remove the used filter, unclick the cartridges to release the filter.



Upgrade Kit

Gill™ Mask Reusable Respirator can be upgraded to Gill™ Mask Pro Reusable Respirator. Gill™ Mask and Gill™ Mask Pro share the same facepiece. An upgrade can be achieved by replacing the casing and cover.

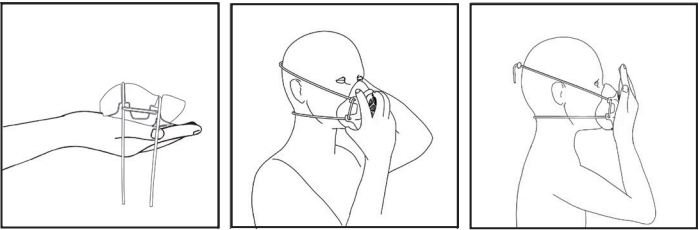
1. Open the Gill™ Mask cover. Remove the filter and cartridge from the frame.
2. Remove the original Gill™ Mask casing and cover by gently twisting the silicone facepiece.
3. Install the new Gill™ Mask Pro casing and cover by snapping it in place to the silicone facepiece.
4. Insert the assembled Gill™ Filter Pro and cartridge into the frame and close the cover.

An upgrade kit consists of the below components,

- Gill™ Mask Pro casing and cover
- 3 pieces of Gill™ Filter Pro P95 or S2
- 1 unit of Gill™ Filter Pro cartridge
- 1 unit of silicone strap

Fitting Instructions

- Take the respirator in your hand, with the door cover resting on your palm, loosen the straps.
- Pull the bottom strap over your head and position it around the neck below the ears. Position the respirator under your chin with the nosepiece pointing up. Pull the top strap over your head resting it high at the top back of your head. Adjust the straps to make sure that respirator fits snugly.
- Make any adjustment on the facepiece and strap tightness to make sure no air is leaking.
- Perform a seal check. Place both hands completely over the respirator and exhale. If air leaks around the nose, readjust the facepiece area around the nose. If air leaks around the respirator edges, adjust position of straps and/or tightness and make certain respirator edges fit snugly against the face.



If you CANNOT achieve a proper seal, DO NOT enter the contaminated area.

Model Numbers

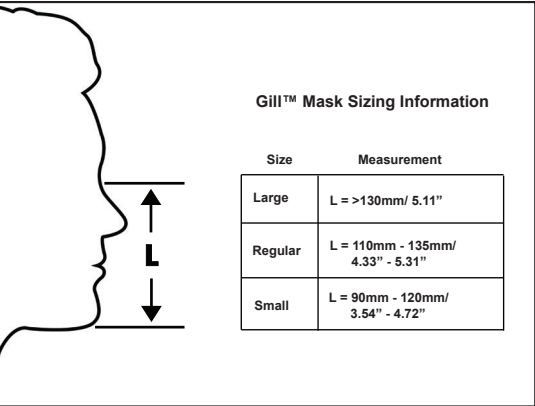
Gill™ Mask/ Gill™ Mask Pro MODEL NUMBER:

Product family	Product name descriptions	Product code and SKU	SKU variables	What is included
Gill™ Mask	Gill™ Mask Reusable Respirator	GM- <u>AWXYZZ</u>	W, Size - R(Regular), L(Large), S(Small) X, Color - W(White), B(Black) Y, Filter type - 0(None), A(S2), B(P95) ZZZ - Dynamic number	1x Gill™ Mask Reusable Respirator 2x Gill™ Filter Cartridges 1x Gill™ Filter Pack
Gill™ Mask	Gill™ Filter pack	GM- <u>FYVVZZ</u>	Y, Filter type - 0(None), A(S2), B(P95) VV, Quantity of filter in unit ZZ - Dynamic number	Gill™ Filter
Gill™ Mask	Gill™ Mask Replaceable Component	GM- <u>UUZZ</u>	UU - Component ZZ - Dynamic Number	Gill™ Mask Component
Gill™ Mask Pro	Gill™ Mask Pro Reusable Respirator	GP- <u>AWXYZZ</u>	W, Size - R(Regular), L(Large), S(Small) X,Color - W(White), B(Black) Y, Filter type - 0(None), A(S2), B(P95) ZZZ - Dynamic Number	1x Gill™ Mask Pro Reusable Respirator 2x Gill™ Filter Pro Cartridges 1x Gill™ Filter Pro Pack

Gill™ Mask Pro	Gill™ Mask Pro Upgrade Kit	GP- <u>U0XYZZ</u>	X, Color - W(White), B(Black) Y, Filter type - 0(None), A(S2), B(P95) ZZZ - dynamic number	1x Gill Mask Pro Upgrade Kit 1x Gill Filter Pro cartridges 1x Gill Filter Pro pack
Gill™ Mask Pro	Gill™ Filter Pro pack	GP- <u>FYVVZZ</u>	Y, Filter type - 0(None), A(S2), B(P95) VV, Quantity of filter in unit ZZ - Dynamic number	Gill™ Filter Pro
Gill™ Mask Pro	Gill™ Mask Pro Replaceable Component	GP- <u>UUZZ</u>	UU - Component ZZ - Dynamic Number	Gill™ Mask Pro Component

Sizing Information for Respirator

- Large: 129mm (w) x 130mm (h); 5.0in (w) x 5.1in (h)
- Regular: 118mm(w) x 125mm (h); 4.6in (w) x 4.9in (h)
- Small: 110mm (w) x 95mm(h); 4.3in (w) x 3.7in (h)



Gill™ Mask Sizing Information

Size	Measurement
Large	L = >130mm/ 5.11"
Regular	L = 110mm - 135mm/ 4.33" - 5.31"
Small	L = 90mm - 120mm/ 3.54" - 4.72"

Specifications Reusable Respirator

- Biocompatible Silicone Rubber (ISO 10993-12:2012)
 - Passed 3M Qualitative Fit Test
 - Field of vision > 60 degrees
 - Passed Flammability test
 - Weight 80 - 90 grams
 - All materials can endure up to 125 degree Celcius and 200 kPa without damage.
- Applicable to Gill™ Mask Reusable Respirator and Gill™ Mask Pro Reusable Respirator.

Filter S2

- Non-woven Polypropylene meeting EN 14683:2019 Type IIR
- Bacterial Filtration Efficiency, BFE > 98%
- Blood Penetration > 16kPa
- Microbial cleanliness < 30CFU/g

Applicable to Gill™ Filter S2 and Gill™ Filter Pro S2.

Filter P95

- Non-woven Polypropylene meeting GB2626:2019
- Particle Filtration Efficiency, PFE > 95%

Applicable to Gill™ Filter P95 and Gill™ Filter Pro P95.

Cleaning and Maintenance

- Before cleaning, remove the filter from the cartridge.
- We recommend washing before usage or storage.
- Always inspect visually that all components work properly before use.

For **water-based** cleaning:

1. Clean Gill™ Mask/ Gill™ Mask Pro and its cartridges by submerging components in warm water with any of the cleaning methods below:
 - a. Dilute mild household detergent or a disinfectant with water by following the instructions recommended by the manufacturer.
 - b. Hypochlorite solution (50 ppm of chlorine) made by adding approximately one millilitre of laundry bleach to one litre of warm water.
2. Rinse components thoroughly in clean and warm water.
3. Drain the water from the components.
4. Dry the components with a clean lint-free cloth or let them air dry on a clean surface.

For **thorough** cleaning, the following actions can be added to water-based cleaning procedure:

1. Before cleaning, you may use a stiff bristle (not wire) brush to facilitate the removal of dirt.
2. Before cleaning, you may disassemble the facepiece by removing it from the main casing. Perform the cleaning procedure on components before reassembling the facepiece back to the casing.

Note: This device is not validated for automated cleaning process.

Storage Conditions and Shelf Life

1. Store the unused filter in its original packaging at a cool and dry location.
2. Store the respirator in a cool and dry location.
3. Avoid direct sunlight.
4. Shelf life of Gill™ Mask/ Gill™ Mask Pro and Gill™ Filter/ Gill™ Filter Pro are 2 years.

Symbols

Symbol	Description
	Manufacturer
	Authorized Representative
	Use-by Date
	Serial Number
	Temperature Limit

	Do not re-use
	Consult instructions for use
	CE Mark
	Medical Device

Disposal

Gill™ Mask/ Gill™ Mask Pro is made of recyclable material. Gill™ Filter/ Gill™ Filter Pro is a single use disposable filter. Please consult your organization or local authority for information regarding disposable and recycling.

For more information

Manufacturer:
Gill Lab Pte Ltd
79 Ayer Rajah Crescent, 02-07, Singapore 139955
(+65) 6899 2313
<https://www.gillmask.com>

Authorized Representative:
MEDNET EC-REP GmbH
Borkstrasse 10, 48163 Münster, Germany

Gill™ is a trademark of Gill Lab Pte Ltd, used under license in Singapore.