

Goldair™



Wall Mounted Heating Solutions

Goldair™

For more than 40 years, Goldair has been the leading name behind heating solutions that people love and trust in their homes. Goldair wall mounted heating combines natural-feeling background warmth with stylish, space saving designs. Their rapid heat up, silent operating and low surface temperature make them a safe and popular choice.

Wall mounted heaters are ideal for domestic and commercial use, especially when combined with other heating types. Perfect during seasonal transitions (spring and autumn) to provide a little extra background warmth, and in low use areas such as hallways, utility rooms and foyers.

With the increase in houses installing heat pumps and the introduction of new Government legislation, wall mounted heaters have become the ideal heating complement for the rest of the house.



THE GOLD STANDARD.

Backed by over 40 years of world-class technological development, all Goldair products meet and exceed the strictest standards. We wouldn't have it any other way. That's why you can be sure of our Safety and Reliability Guarantee.



Contents

| | |
|-----------------------------------|---------|
| Healthy homes guidelines | 4 |
| Guide to the guide & helpful tips | 5 |
| Featured products | 6 & 7 |
| Designer Fabric Panel heaters | 8 - 11 |
| Designer Panel heaters | 12 & 13 |
| Electronic Panel heaters | 14 & 15 |
| Manual Panel heaters | 16 & 17 |
| Wall Mounted Ceramic heaters | 18 & 19 |
| Goldair Wifi Range | 20 & 21 |
| Product Specification | 22 & 23 |

Healthy Homes guide

The healthy homes standards introduced specific and minimum standards for heating, insulation, ventilation, moisture and drainage, and draught stopping in rental properties.



Landlords must provide fixed heating that can directly heat the main living area to a maintained temperature of at least 18 degrees Celsius.

What is the heating standard?



The main living area is the largest room that is used for general, everyday living – for example a lounge, family room or dining room. There must be fixed heating that can directly heat the main living area to at least 18 degrees Celsius.

To find out what size of fixed heater that you need use the online assessment tool at www.tenancy.govt.nz/heating-tool

For more information around the regulations and requirements related to the Healthy Homes legislation please visit the www.tenancy.govt.nz/healthy-homes

Why Goldair?

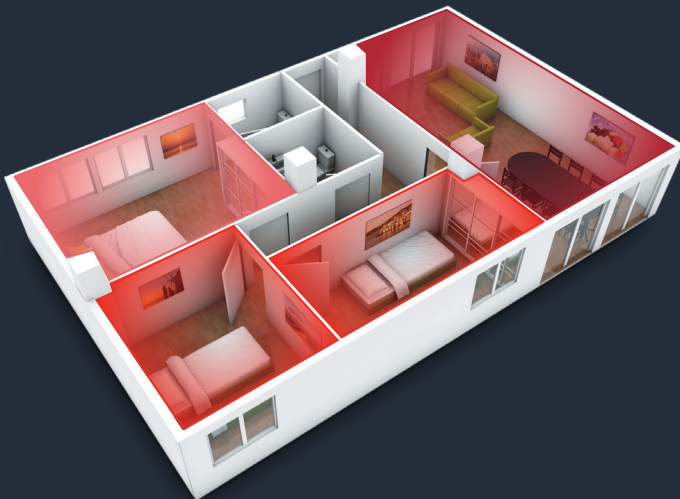
Goldair has developed a range of fixed wall mounted heating solutions to provide the main heating source in a variety of room sizes, as well as additional complementary products to top-up the main heating source, bringing it up to the required level of compliance.



Guide to the guide

Room Type:

- S** **SMALL 10m²**
Small bedrooms, home offices
- M** **MEDIUM 10m² - 18m²**
Bedrooms, dining rooms and hallways
- L** **LARGE 18m² - 28m²**
Lounges, large bedrooms



Fixing Type:

- F** Fixed – heaters designed to fix on walls
- P** Portable – heaters that can be moved from room to room

Cost guide:

- 46^c Per hour – based on average 0.335c per kWh*
- €31 Per month – average 30 day month+

| | Room type | Fixing type | Cost per hour* | Cost per month+ |
|-------|-----------|-------------|-----------------|-----------------|
| 500W | S | F/P | 17 ^c | €11 |
| 1000W | S | F/P | 34 ^c | €23 |
| 1500W | M | F/P | 50 ^c | €34 |
| 2000W | L | F/P | 67 ^c | €45 |
| 2400W | L | F/P | 80 ^c | €54 |

*Images shown in this guide are a representation of the type of heater. The range available in store may differ. You can apply the room type, fixing type and costs guide to all models of a heater type.

DISCLAIMER: 01/02/24

*Based on 0.335c per kWh being the average kWh price across New Zealand (Source: MBIE Quarterly survey of domestic electricity prices 15 Feb 2023)

+Based on 0.335c per kWh, average 3 hours per day for 30 days with a thermostat operating

Goldair have made every effort to ensure that the information in this guide is correct at time of printing. Power pricing information should be used as a guide only. The information provided assumes the thermostat is operating efficiently due to the house being insulated, having curtains and no significant draft ingress. Goldair cannot be held responsible for any misunderstanding, disputes or claims relating to any consumer's power usage.



Space Saving

Save floor space by mounting on the wall and control via remote.

GCW220

Wall Mounted Ceramic Heater with timer and remote control.



Wall Mounted or Castor Wheels

Either mount to the wall for a fixed heating solution or keep on the castor wheels for a portable heating option.

GPH450

Metal Panel Heater with dial control.

Create the convection airflow for full room heating by either mounting on the wall or keeping as a portable option that can move between rooms.

GPPH630

Metal Panel Heater with Inverter, Electronic and wifi control.

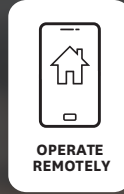




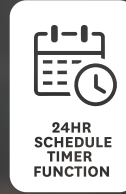
WIFI & SMART HOME ENABLED



WIFI & SMART HOME ENABLED



OPERATE REMOTELY



24HR SCHEDULE TIMER FUNCTION



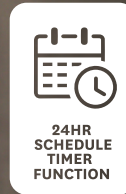
VOICE CONTROL



ELECTRONIC CONTROLS



INVERTER ENERGY TECHNOLOGY



24HR SCHEDULE TIMER FUNCTION



3 YEAR WARRANTY



MANUAL CONTROLS



ADJUSTABLE THERMOSTAT



2 YEAR WARRANTY

MANUAL CONTROLS

DESIGNED
IN EUROPE



Designer Series Wall Mounted Fabric Panel Heaters

with Electronic Control, Wifi and Inverter

Crafted with a keen eye on contemporary European design, Goldair Platinum's Eurotech panel heaters boast a distinctive fabric finish on their bodies, harmonizing seamlessly with the chic aesthetics of today's New Zealand homes.

Elevate your space by selecting either the sophisticated granite or stone fabric finish and pair it with our cutting-edge technology, delivering an effective and fashionable heating solution.



- Download to your own smartphone or tablet from the Apple App Store or Google Play
- Control the heater on the fly. A downloadable app lets you easily set and monitor the temperature, and timers.



Eurotech Wall Mounted Fabric Panel Heaters

with Electronic Control, Wifi and Inverter

Goldair Platinum Eurotech heaters feature modern European design, combined with our market leading technology to give you an efficient and stylish heating solution



5 Heat Settings



Overheat Protection



Electronic Thermostat



Safety Tilt Switch



Wall Mountable or Castors

Full Colour Touch Control

Soft touch buttons add a stylish touch to the full colour screen allowing you to control your heater with greater ease.

Inverter Technology

Inverter control systems enable smooth change of power to precisely maintain room temperature while saving you electricity.

Extended Warranty

The warranty period for Goldair Platinum Heaters is 3 years.

Wifi Enabled

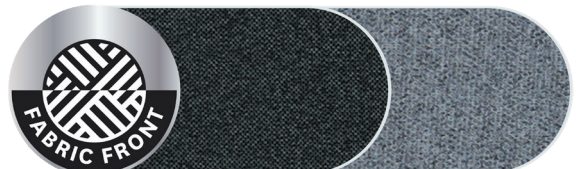
Goldair App allows you to adjust monitor, and set weekly schedules for the heater



· Control the heater on the fly. A downloadable app lets you easily set and monitor the temperature and timers from your smartphone or tablet.



No Flame - Fire Retardant Fabric



| | Room type | Fixing type | Cost per hour* | Cost per month |
|-------|-----------|-------------|----------------|----------------|
| 2000W | L | F/P | 67°C | \$45 |

DISCLAIMER: 01/02/24

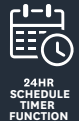
*Based on 0.335c per kWh being the average kWh price across New Zealand (Source: MBIE Quarterly survey of domestic electricity prices 15 Feb 2023)

·Based on 0.335c per kWh, average 3 hours per day for 30 days with a thermostat operating.

See www.goldair.co.nz for more details, including all our spec sheets and user manuals made available for download.



WIFI
ENABLED
CONTROLS



24HR
SCHEDULE
TIMER
FUNCTION



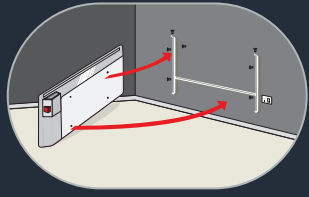
3
YEAR
WARRANTY

Pair the product through the Goldair App and have full control from the comfort of your couch

GPPH900 2000W
820L x 475H x 130D(mm)



GPPH910 2000W
820L x 475H x 130D(mm)



Wall mountable option
Saves up valuable floor space



Optional Feet for a portable option



Hedgehog Element

This unique patented compact heating element design results in faster heating time due to the increased surface area of the heating element.

Cool air flows through the element rather than over, increasing the heat output efficiency.

Designer Series Wall Mounted Panel Heaters

with Electronic Control, Wifi

Opt for the flexibility of wall mounting or maintain portability with the contemporary Scandinavian-inspired feet featured in the Goldair Platinum Designer Series Panel Heater.



2 Heat Settings



Overheat Protection



Electronic Thermostat



Safety Tilt Switch



Wall Mountable or Feet

Designed to effectively warm even the most spacious rooms, this 2400W panel heater incorporates a cast element for enhanced inertia and power.

Tailor your heating experience using the scheduler function on the Goldair App, and seamlessly integrate our state-of-the-art technology and functionality for an efficient and stylish heating solution tailored to complement any New Zealand household.

GPCV400 2400W

955L x 480H x 140D(mm)



Control the heater on the fly. A downloadable app lets you easily set and monitor the temperature and timers from your smartphone or tablet.



Adjustable Thermostat
Regulate your level of warmth



Optional Modern Scandi-feet

| | Room type | Fixing type | Cost per hour* | Cost per month+ |
|-------|-----------|-------------|------------------|-----------------|
| 2400W | L | F/P | 80 ^{°C} | ~\$54 |

DISCLAIMER: 01/02/24


*Based on 0.335c per kWh being the average kWh price across New Zealand (Source: MBIE Quarterly survey of domestic electricity prices 15 Feb 2023)

+Based on 0.335c per kWh, average 3 hours per day for 30 days with a thermostat operating.

See www.goldair.co.nz for more details, including all our spec sheets and user manuals made available for download.



WIFI
ENABLED
CONTROLS



24HR
SCHEDULE
TIMER
FUNCTION



3
YEAR
WARRANTY



Wall Mounted Metal Panel Heaters

with Electronic Control, Wifi and Inverter

Goldair's Platinum HeatSmart Panel Heater, featuring unique inverter technology, can intelligently optimise energy use. In other words, by using less energy to keep you warm it can help to lower winter power bills.



5 Heat Settings



Overheat Protection



Electronic Thermostat



Safety Tilt Switch



Wall Mountable or Castors

Inverter Technology

Inverter control systems enable smooth change of power to precisely maintain room temperature while saving you electricity.

WiFi Enabled

Goldair app allows you to adjust and monitor

Aerodynamic Shape of Housing

Air Dynamic System enhances heating airflow.

Monolithic Heating Element

High performance heating element.

Extended Warranty

The warranty period for Goldair Platinum Heaters is 3 years.

AirPurification System

BIO Filter System.



| | Room type | Fixing type | Cost per hour* | Cost per month+ |
|-------|-----------|-------------|------------------|-----------------|
| 1000W | S | F/P | 34 ^{°C} | \$23 |
| 1500W | M | F/P | 50 ^{°C} | \$34 |
| 2000W | L | F/P | 67 ^{°C} | \$45 |
| 2400W | L | F/P | 80 ^{°C} | \$54 |



- Control the heater on the fly. A downloadable app lets you easily set and monitor the temperature and timers from your smartphone or tablet.

DISCLAIMER: 01/02/24

*Based on 0.335c per kWh being the average kWh price across New Zealand (Source: MBIE Quarterly survey of domestic electricity prices 15 Feb 2023)

+Based on 0.335c per kWh, average 3 hours per day for 30 days with a thermostat operating.

See www.goldair.co.nz for more details, including all our spec sheets and user manuals made available for download.



Similar in design to the Manual versions, the Electronic Panel Heaters have additional features such as Inverter, WIFI and Electronic controls included as standard features, making them more adaptable to your personal requirements.



Adjustable Thermostat

- Regulate your level of warmth

GPPH610 1000W

475L x 430H x 130D(mm)

GPPH620 1500W

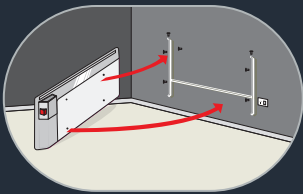
690L x 430H x 130D(mm)

GPPH630 2000W

800L x 430H x 130D(mm)

GPPH490 2400W

1000L x 450H x 265D(mm)



Wall mountable option

Saves up valuable floor space



Optional Castor wheels

Easy to move around



Wall Mounted Metal Panel Heaters

with Manual Control

Panel heaters are convection heaters and provide warmth based on the principle of hot air attracting cool air over a large panel surface. Air is drawn over the element and rises up through the unit and out the top through vents.

Panel heaters are typically wall mounted and provide efficient heating in lounges, hallways and bedrooms.

Great for

- Lounges, hallways, & bedrooms
- Heat pump complementary heating
- Quiet operation
- Simple manual operation

Features may include:



2 Heat Settings



Overheat Protection



Safety Tilt Switch



Adjustable Thermostat



Wall Mountable and Castors



| | Room type | Fixing type | Cost per hour* | Cost per month+ | | Room type | Fixing type | Cost per hour* | Cost per month+ |
|-------|-----------|-------------|----------------|-----------------|-------|-----------|-------------|----------------|-----------------|
| 500W | S | F/P | 17°C | \$11 | 1500W | M | F/P | 50°C | \$34 |
| 1000W | S | F/P | 34°C | \$23 | 2000W | L | F/P | 67°C | \$45 |
| | | | | | 2400W | L | F/P | 80°C | \$54 |

DISCLAIMER: 01/02/24

*Based on 0.335c per kWh being the average kWh price across New Zealand (Source: MBIE Quarterly survey of domestic electricity prices 15 Feb 2023)

+Based on 0.335c per kWh, average 3 hours per day for 30 days with a thermostat operating.

See www.goldair.co.nz for more details, including all our spec sheets and user manuals made available for download.

Similar in design to the Electronic versions, these Manual control panel heaters are excellent complementary heaters to heat pumps for areas such as hallways and bedrooms.

Each size comes with an easy to install mounting bracket so these can be fixed to the wall in no time, saving valuable floor space and providing a fixed heating source.



GPH150 500W
475L x 450H x 130D(mm)

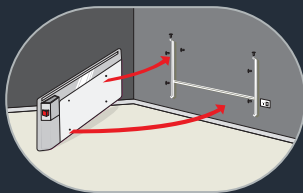
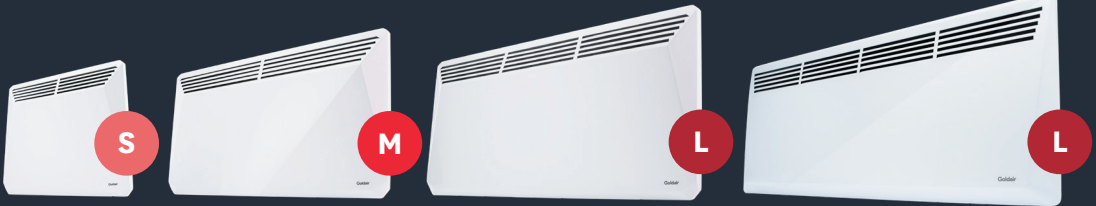
GPH250 1000W
475L x 450H x 130D(mm)

GPH350 1500W
620L x 450H x 130D(mm)

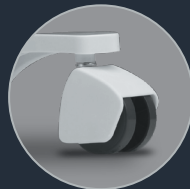
GPH450 2000W
780L x 450H x 130D(mm)

Adjustable thermostat
Regulate your level of warmth

GPH480 2400W
1000L x 450H x 130D(mm)



Wall mountable option
Saves up valuable floor space



Optional Castor wheels
Easy to move around



Wall Mounted Ceramic Heaters

Ceramic Wall heaters are perfect for those rooms where space is limited. Safety is also a big feature for these products as they are mounted high up on the wall, keeping them at a safe distance from younger ones.

With Ceramic Wall heaters being mounted on a wall, these also are a perfect choice for the landlord that needs to provide a fixed form of heating.

Great for

- Lounges, hallways, & bedrooms
- Heat pump complementary heating
- Quiet operation
- Simple manual operation

Features include:



2 Heat Settings



Overheat Protection



Adjustable Thermostat



Timer Function



Digital Display



Remote Control



REMOTE CONTROL



WALL MOUNTED



2 YEAR WARRANTY



ADJUSTABLE THERMOSTAT



TIMER FUNCTION



GCW220 2000W

| | Room type | Fixing type | Cost per hour* | Cost per month+ |
|-------|-----------|-------------|----------------|-----------------|
| 2000W | L | F | 67°C | \$45 |

DISCLAIMER: 01/02/24

*Based on 0.335c per kWh being the average kWh price across New Zealand (Source: MBIE Quarterly survey of domestic electricity prices 15 Feb 2023)

†Based on 0.335c per kWh, average 3 hours per day for 30 days with a thermostat operating.

See www.goldair.co.nz for more details, including all our spec sheets and user manuals made available for download.





Get Smart

Wifi & Smart Home Integration

Combining modern design with innovative technology, we are leading the charge with our Smart Home seasonal products. All our Wifi enabled products can be paired for free with our very own Goldair app and are Amazon Alexa and Google Home device compatible. With over 50 Goldair Wifi & Smart Home enabled products to choose from, sit back, get smart and get warm this winter.

Operate your devices conveniently from one place with our very own Goldair app. Pair your Wifi enabled devices by simply downloading the Goldair app from the Apple store or Google Play. For instructions on your individual device, go to:

<https://goldair.co.nz/goldair-app>
or use this handy QR code to get there.



Our app mirrors the functionality of your heater, allowing you to turn on and off, set different modes, or timer functions if they are available on your device. In some models, the app has hidden features not available on your device, such as a full week scheduler opening it up for even more flexibility.



Flexibility

Add unlimited Goldair devices to your app as often as you want



Energy Saving

Promotes energy efficiency by setting timers or schedulers on your devices



Safety First

Our app still maintains all Goldair's high safety standards for your peace of mind



Control the heater on the fly. A downloadable app lets you easily set and monitor the temperature and timers from your smartphone or tablet.



“Alexa, turn my bedroom heater on”



“Hey Google, turn my bedroom heater off”

Smart Home

Wifi & Smart Home Integration

Experience the coordination and convenience of home automation by turning your space in to a Smart Home, where your electronic devices can be operated through your WiFi via your phone, or voice assistant device. From light bulbs to security cameras and of course heating and cooling products, Smart Homes are the future in providing you with security, efficiency and flexibility.

We have paired all Goldair WiFi enabled devices to work with Amazon Alexa and Google Home devices, giving you flexibility to use your phone or voice to automate the Goldair devices you choose to take home to your new Smart Home World.

We Recommend

Here at Goldair, we embrace the ever-evolving technology world working consistently on our development, engineering and testing of our products to bring the highest standard and quality of heating devices to New Zealand shores. See below some of our most recommended wall mountable heating products compatible with WiFi and Smart Home automation.



THE GOLD STANDARD.

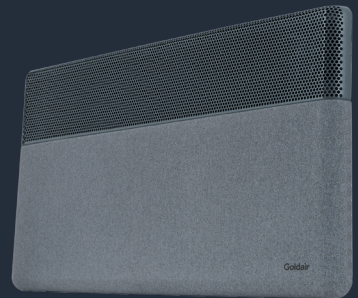
Every Goldair product is tested and tested again so it can be trusted to be safe and reliable.



GPPH630 2000W
Ideal for large rooms
see page 15



GPCV400 2400W
Ideal for large rooms
see page 12



GPPH900 2000W
Ideal for large rooms
see page 10



Wall Mounted Ceramic Heaters

| Model | Watts | Room Size | Width (mm) | Height (mm) | Depth (mm) |
|--------|-------|--|------------|-------------|------------|
| GCW220 | 2000 | Medium/Large 10m ² - 20m ² | 510 | 220 | 135 |

Wall Mounted Electronic Control Panel Heaters

| Model | Watts | Room Size | Width (mm) | Height (mm) | Depth (mm) |
|---------|-------|--|------------|-------------|------------|
| GPPH610 | 1000 | Small 10m ² | 475 | 430 | 130 |
| GPPH620 | 1500 | Medium 10m ² - 15m ² | 690 | 430 | 130 |
| GPPH630 | 2000 | Large 15m ² - 20m ² | 800 | 430 | 130 |
| GPPH490 | 2400 | Medium/Large 10m ² - 20m ² | 1000 | 265 | 450 |
| GPCV400 | 2400 | Large 15m ² - 20m ² | 955 | 480 | 140 |
| GPPH900 | 2000 | Large 15m ² - 20m ² | 820 | 475 | 130 |
| GPPH910 | 2000 | Large 15m ² - 20m ² | 820 | 475 | 130 |

Wall Mounted Manual Control Panel Heaters

| Model | Watts | Room Size | Width (mm) | Height (mm) | Depth (mm) |
|--------|-------|--|------------|-------------|------------|
| GPH150 | 500 | Small 10m ² | 475 | 450 | 130 |
| GPH250 | 1000 | Small 10m ² | 475 | 450 | 130 |
| GPH350 | 1500 | Medium 10m ² - 15m ² | 620 | 450 | 130 |
| GPH450 | 2000 | Large 15m ² - 20m ² | 780 | 450 | 130 |
| GPH480 | 2400 | Large 15m ² - 20m ² | 1000 | 450 | 130 |

MINIMUM SIDE
INSTALLATION
CLEARANCE
200mm



MINIMUM SIDE
INSTALLATION
CLEARANCE
200mm



Wall Mounted Ceramic Heaters

NOTE POWERCORD COMES OUT
FROM BELOW THE CONTROL
PANEL ON RIGHT HAND SIDE.
LENGTH APPROX 1.2-1.5M

300MM
MINIMUM CLEARANCE FROM
OBJECT ABOVE

1800MM
MINIMUM CLEARANCE FROM
FLOOR

300MM
MINIMUM CLEARANCE FROM
OBJECT ABOVE

Wall Mounted Installation Guide

MINIMUM SIDE
INSTALLATION
CLEARANCE
150mm



MINIMUM SIDE
INSTALLATION
CLEARANCE
150mm



Wall Mounted Panel Heaters

NOTE POWERCORD COMES OUT
FROM BELOW THE CONTROL
PANEL ON RIGHT HAND SIDE.
LENGTH APPROX 1.2-1.5M

CLEARANCE FROM FLOOR
150MM MINIMUM
300MM MAXIMUM



CDB 
GROUP

New Zealand
PO Box 100-707,
North Shore Mail Centre,
Auckland, 0745
www.goldair.co.nz
Ph (09) 917 4000

Australia
PO Box 574,
South Morang,
Victoria, 3752
www.goldair.com.au
Ph (03) 9365 5100