



Operating Instructions

Fibre Panel Heater Installation Instructions



Model: GECO260

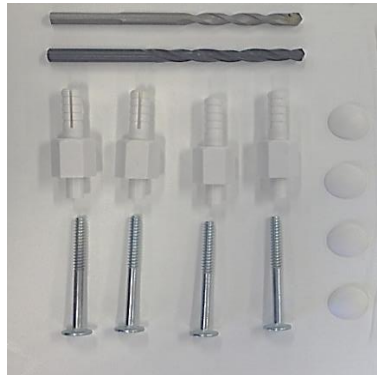
General Care and Safety Guide

- The appliance must not be immersed in any liquids.
- There are no user serviceable parts installed in the unit.
- Do not place the unit in wardrobes or other enclosed spaces as this may cause fire hazards.
- This unit is not supposed to be used in or around locations where foodstuffs, works of art or delicate articles of science, etc. are stored.
- If your appliance does not work, or is not working properly, contact the place of purchase or the Customer Services Team.

Components



Heater x 1



Screw pack components

Drill bits x 2

(1 x 7mm for plasterboard or wooden walls,
1 x 8mm for masonry walls)

Mounting Plugs x 4

Screws x 4

Screw Caps x 4

Wall Mounting & Position Instructions

Always choose a safe location for the heater, keeping in mind the safety precautions outlined below. The heater needs to be mounted so that the power switch is in the top right hand corner. Do not run the power cord behind the heater. This will determine where you mount the heater in relation to where the power socket is located.

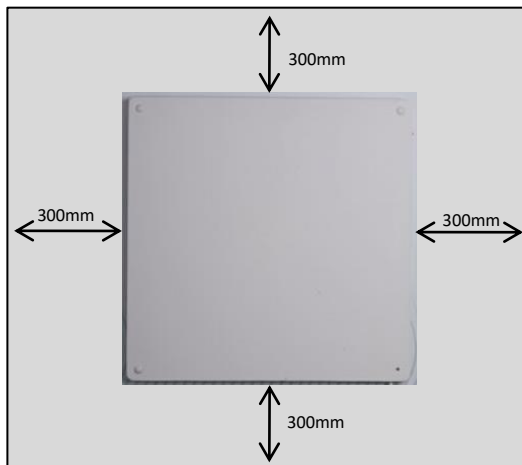
NOTE: Your Goldair EcoPanel Heater should be installed with at least 300mm clearance from the floor and any other surrounding parts including other appliances, side walls, ceilings, shelves and soft furnishings.

HEATER MUST NOT BE LOCATED IN FRONT OF A SOCKET OUTLET

DO NOT RUN THE POWER CORD BEHIND THE HEATER

WALL MOUNTED HEATERS ARE ONLY TO BE MOUNTED ON WALLS THAT COMPLY WITH CURRENT AS/NZS SPECIFICATIONS & BUILDING REGULATIONS

MAKE SURE THE APPLIANCE IS UNPLUGGED AND POWER SWITCHES ARE OFF



Wall Mounting & Position Instructions cont.

The appliance must not be located immediately below a socket outlet.
The panel heater must be mounted on the wall with the power switch in the top right hand position as shown below.



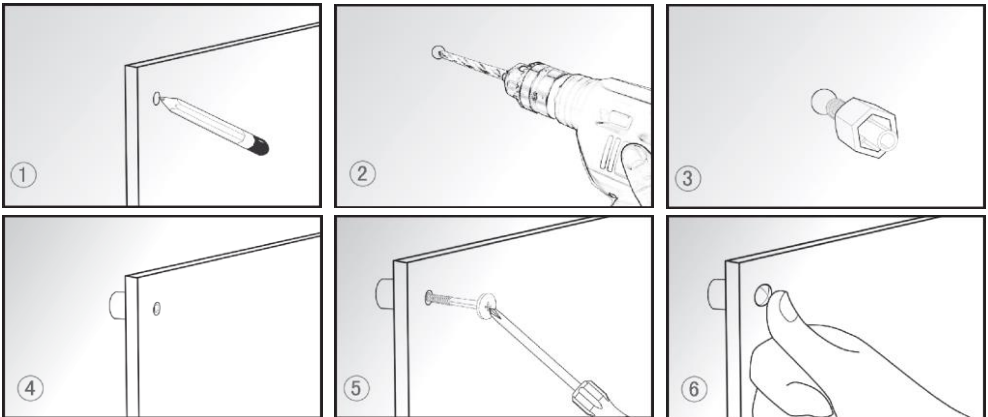
Note: Do not run power cord behind the heater.

Wall Mounting & Position Instructions cont.

NOTE: Your Panel Heater should be installed with at least 300mm clearance from the floor and any other surrounding parts including other appliances, side walls, ceilings, shelves and soft furnishings.

1. Mark the positions of the four holes to be drilled on the wall. Ensure there is a 300mm clearance on all sides of the heater.
2. Drill holes with an appropriate drill bit for the wall surface you are mounting the heater on to.
3. Insert the plastic wall plugs into the holes.
4. Install the panel heater onto the 4 wall plugs matching the 4 holes on the heater.
5. Screw the 4 screws into the plastic wall plugs.
6. Put the caps onto the end of the screws. It is recommended to use some normal glue to stick the caps onto the screw heads.

To remove the unit from the wall, simply remove the screw caps, unscrew the screws and take the heater down.



Goldair™



CDB  Goldair™

New Zealand
PO Box 100707,
North Shore Mail Centre,
Auckland, 0745
www.goldair.co.nz

Australia
PO Box 574,
South Morang,
Victoria, 3752
www.goldair.com.au