

ARMATEX

ARCHITECTURAL TEXTURES & RENDERS

FIREWALL

FIREWALL RENDERS are (N.C.C.) Compliant Facade Render Systems tested in accordance with Australian Standards Fire Testing AS 1530.1:1994 (R2016) or AS-5113 & BS-8414 - large scale facade fire testing.



ARCHITECTURAL TEXTURES



CAMBRIDGE



TUSCANY



RIVERINA



PASTINA



TRAVERTINE



MOROCCO



LIGHT STONE



9 MM DRAG



1 MM SWIRL



1 MM DRAG



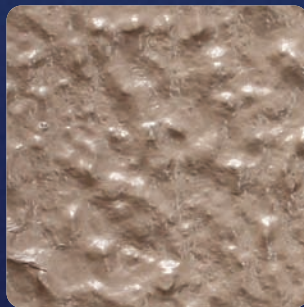
2 MM SWIRL



2 MM DRAG



R40 FINE ROLL ON



R40 MEDIUM ROLL ON



R40 COARSE ROLL ON



9 MM COARSE ROLL ON

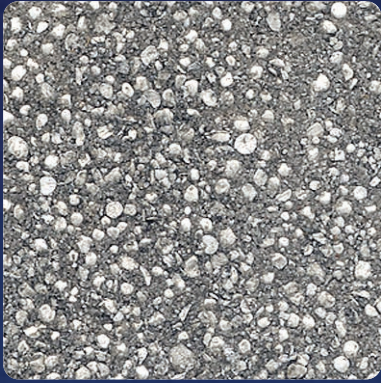
Also available in:



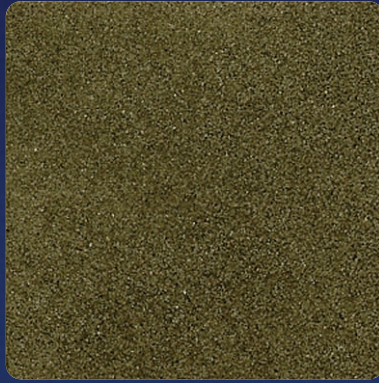
ARMATEX

ARCHITECTURAL TEXTURES & RENDERS

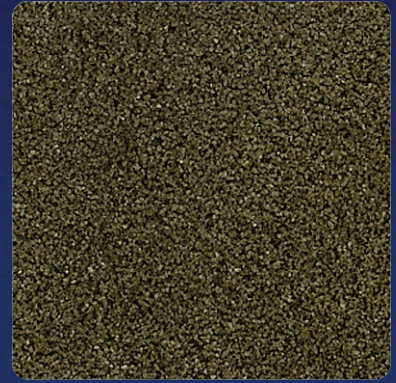
SKIM & RENDER BASE COATS



HIGHBUILD



PRE PATCH MEDIUM



PRE PATCH COARSE



FR SKIM



FR SKIM MEDIUM



CBR BAG RENDER



EIFS IMPACT SKIM



EIFS MEDIUM TOP COAT SKIM



ROTA RENDER

* Please refer to relevant Astec Technical Bulletin for application details.

ARMATEX

ARCHITECTURAL TEXTURES & RENDERS

FIREWALL

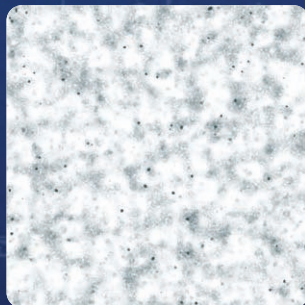


Firewall 1530 Render
Non-Combustible



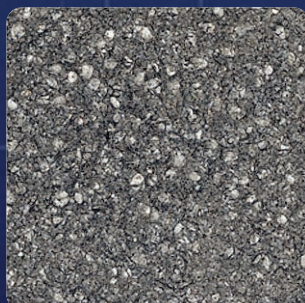
Firewall Rota-Render
Non-Combustible

A pre-bled, polymer modified cement render that complies as a non-combustible building element in accordance with National Construction Code - AS 1530.1:1994 (R2016).



Firewall Aggra-Prime

Aggregate Filled Roll On Primer for cement sheet, flush jointed block work, AAC & PVC panels and raked brick. Also adheres well to painted surfaces.



Firewall Render



Firewall Skim

Tested to large scale facade fire testing in accordance with AS5113:2016, BS8414-2:2015.

Manufactured by **Astec Paints**

22 - 24 Pinn Street, St. Marys, South Australia 5042

www.astecpaints.com.au