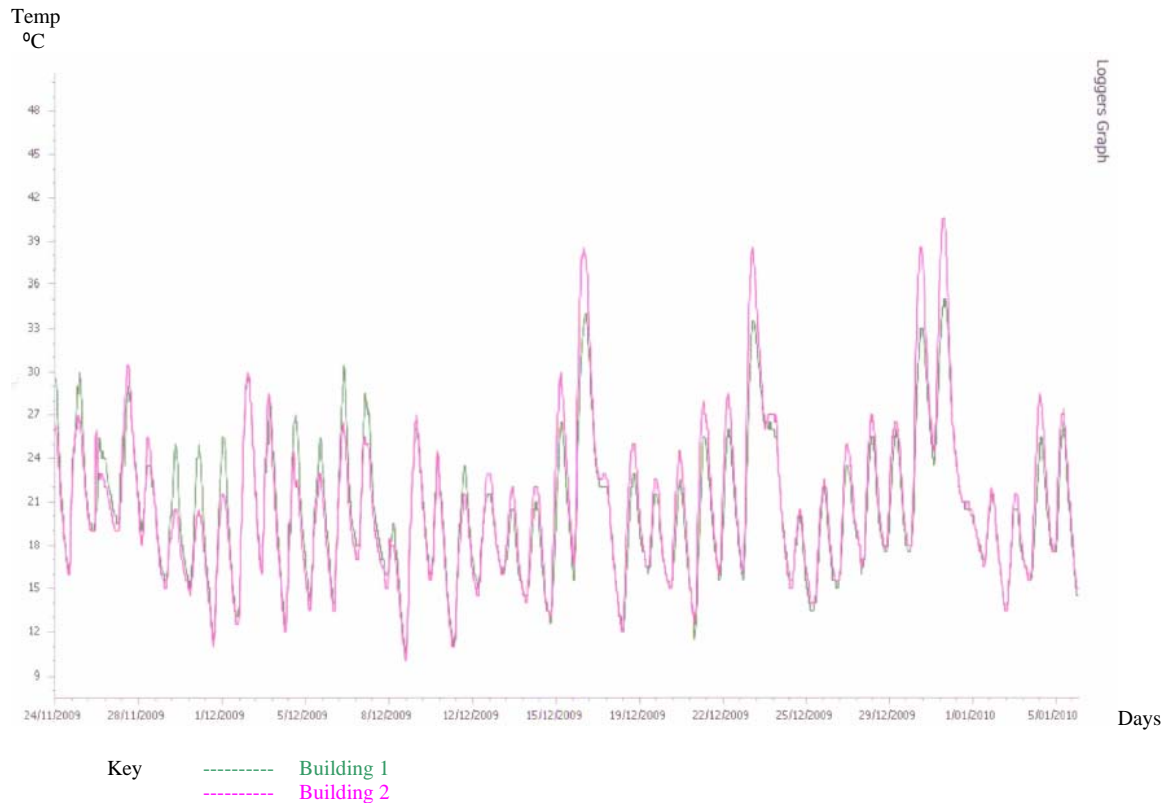




The following thermal graph depicts the variances in internal ambient temperatures that were obtained when comparing two identical* school portable buildings at Staughton College in Melton, Victoria.

Eco Express Thermo data loggers were installed in both school portable buildings at the same time to record the internal ambient temperatures associated with each building in the period between 11 November 2009 and 5 January 2010 and at regular intervals.

The unaltered data results were logged and produced the Eco Express Thermo 2007 graph below.



Building 1 was not coated with Energy Star™ coatings from 24/11/2009 to 13/12/2009. Energy Star™ coatings were applied by the Astec Accredited Applicator – Cocoon Coatings Pty Ltd during the weekend of the 12-13 December 2009, as supplied from Astec Paints Melbourne Pty Ltd. From the 13/12/2009 to 5/01/2010, Building 1 had Energy Star™ coatings applied to its roof.

Building 2 did not have Energy Star™ coatings applied for the whole of the period from 24/11/2009 to 5/01/2010.

CONCLUSION

It can be concluded from the internal ambient temperatures recorded in the graph above, that **Building 1 was at times between 24/11/2009 and 12/12/2009 some 5°C hotter than Building 2.**

After Energy Star™ coatings were applied to Building 1's roof, **Building 1 recorded temperatures some 5°C cooler than Building 2 during the period 14/12/2009 to 5/01/2010** and this benefit transpired immediately after the application of the Energy Star™ coatings to the roof of Building 1.

The internal ambient temperatures of Building 1 **never exceeded** that of the uncoated roof of Building 2 during the period 13/12/2009 to 5/01/2010, importantly noting that the performance of the **Energy Star™ coatings excelled when the ambient temperatures were hotter as noted in the above graph on the days of the 16th, 17th, 23rd, 30th and 31st of December 2010.**

Importantly, the above graph also infers an **internal ambient temperature drop in Building 1 by some 10°C** when compared to the roof of Building 1, not being coated with the Energy Star™ coatings.

Astec Paints Melbourne Pty Ltd
1/27 Scoresby Road, Bayswater, Vic, 3153
P: + 3 9729 8400 F: + 3 9729 8900

Astec Paints Australasia Pty Ltd
262 Marion Road, Netley, SA, 5037
P: + 8 8297 2000 F: + 8 8297 2555

*Identical – these were similar school portable buildings and displayed similar structural characteristics. Each case will provide varying results pending their location and the above results are specific to this particular location. Astec Paints does not warrant results at different locations.