

ecooustic[®] print

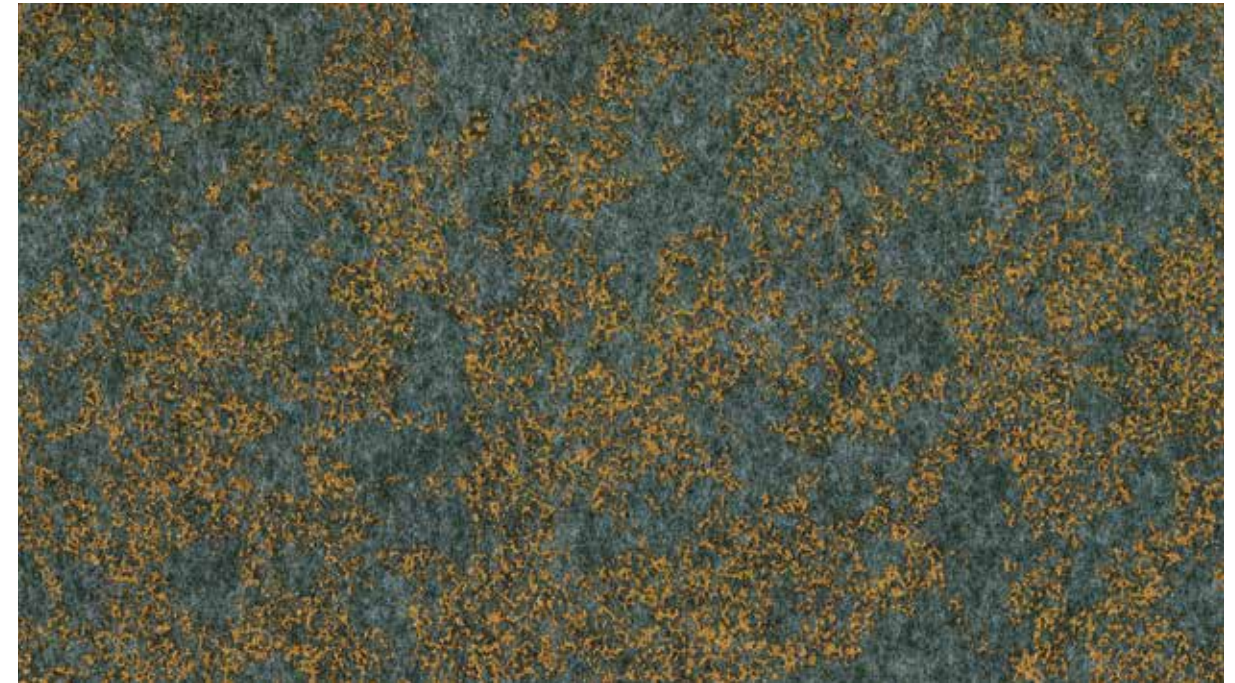


INSTYLE

ecooustic® print: RAW



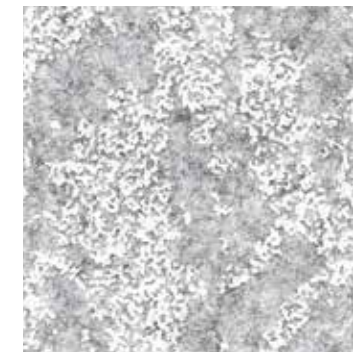
RAW Mist on Light Grey



RAW Bronze on Taupe



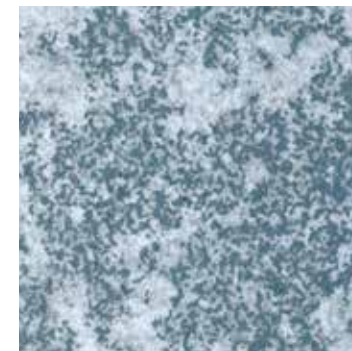
RAW White on White



RAW White on Light Grey



RAW White on Natural



RAW Mist on Light Grey



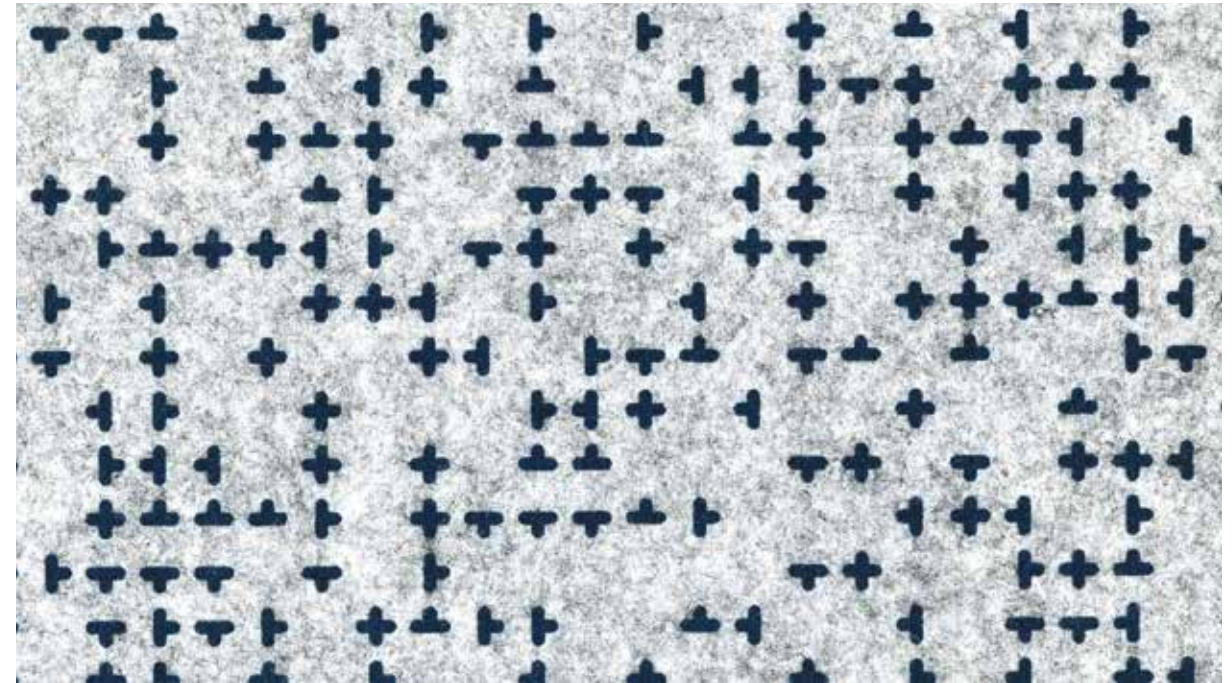
RAW Putty on Charcoal



RAW Flint on Jet

Patterns shown are not to scale
Product may vary in colour due to the nature of the media
Please refer to website for current colour range

ecooustic® print: PLUS by *Michael Young*



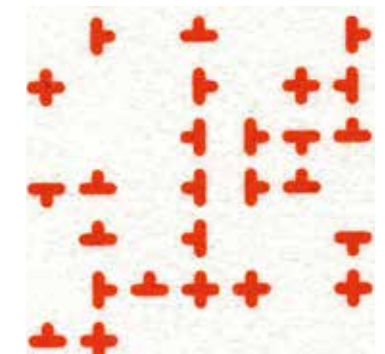
PLUS Petrol on Light Grey



PLUS Silver on White



PLUS White on Natural



PLUS Orange on Cream



PLUS Navy on Charcoal



PLUS Black on Taupe

PLUS Black on Taupe

Patterns shown are not to scale
Product may vary in colour due to the nature of the media
Please refer to website for current colour range



TRI Slate on Light Grey

ecooustic® print: TRI by *Michael Young*



TRI White on White



TRI Ash on Natural



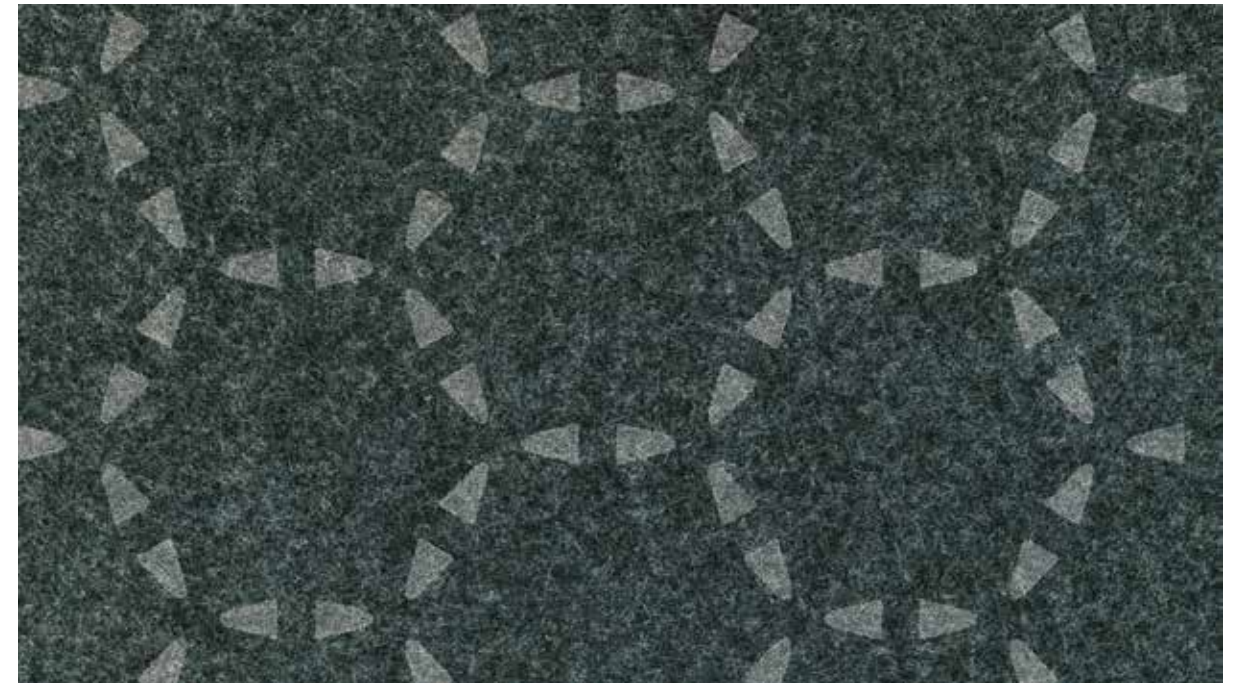
TRI Slate on Light Grey



TRI Black on Charcoal

Patterns shown are not to scale
Product may vary in colour due to the nature of the media
Please refer to website for current colour range

ecooustic® print: **DISC** by *Michael Young*



DISC Stone on Charcoal



DISC White on White

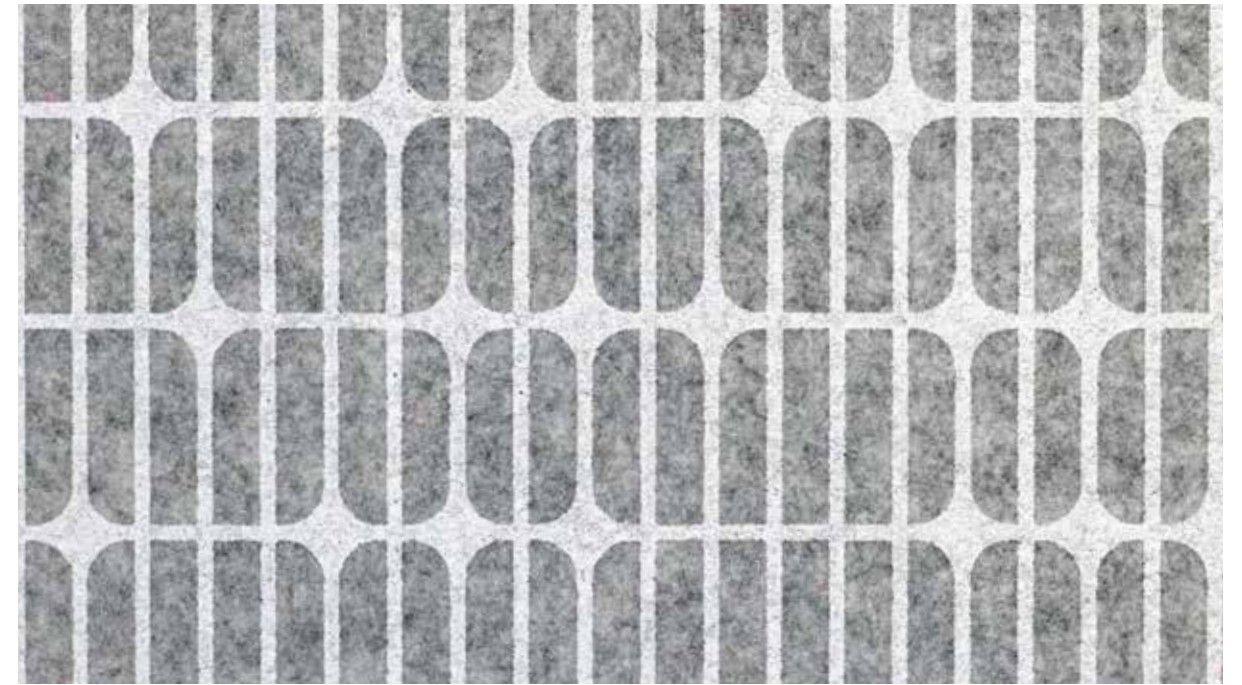


DISC Moss on Natural

DISC Moss on Natural

Patterns shown are not to scale
Product may vary in colour due to the nature of the media
Please refer to website for current colour range

ecooustic® print: **META** by *Michael Young*



META White on Light Grey



META Ash on White



META Stone on Natural



META Olive on Light Grey



META Black on Charcoal

META Olive on Light Grey

Patterns shown are not to scale
Product may vary in colour due to the nature of the media
Please refer to website for current colour range

ecoustic® print

Product	Ecoustic® Print
Print	DISC: 3 colourways, META: 5 colourways, PLUS: 6 colourways, RAW: 7 colourways, TRI: 4 colourways
Pattern Repeat	DISC: H 100mm V 58mm META: H 600mm V 588mm PLUS: H 1200 V 2700mm RAW: H 1200 V 2700mm TRI: H 450mm V 430mm
Composition	100% PET (>50% recycled content)
Thickness	Refer to Ecoustic® Panel + Screen information
Print Dimensions	Ecoustic® Panel: 1200 x 2700mm Ecoustic® Screen: 2400 x 1200mm (mins apply)
Fire Test	AS/NZS 1530.3, AS/ISO 9705 Group 1
Environment	Low VOC and Greentag Level A Certification
Application	Screen, wall and ceiling panel
Please Note	This is a hand printed product. Variation in thickness, fibre mix and colour is an inherent feature of this product. Variation from batch to batch may occur.

BENEFITS

Improved Sound Absorption

Ecoustic® Panel + Screen is designed to reduce and control reverberated noise in building interiors such as open plan offices, bars, restaurants, theatres, convention centres and public spaces. Ecoustic® Panel can absorb 30%, 50%, 80% and 100% of sound depending on the panel thickness when the panel is directly fixed to a wall. Ecoustic® Screen can absorb 50% of sound.

Improved Pinability

Ecoustic® Panel + Screen features an improved pinability compared to similar nonwoven panel products.

Designed for the Environment

Ecoustic® Panel + Screen is made from a minimum of 50% recycled PET. There is minimal waste during production, and any production waste is recycled. Easy to disassemble and separate into the appropriate recycling systems, Ecoustic® Panel + Screen can be recycled through Instyle's Revive® program.

Thermal Performance

Ecoustic® Panel: 25mm and 50mm offer an additional benefit of increasing the thermal performance and energy efficiency of an existing building. Retrofitting to an existing wall will increase the thermal performance by R 0.7 (25mm Ecoustic) and R 1.4 (50mm Ecoustic).

Lightweight, Easy to Handle + Install

Compared to traditional systems, Ecoustic® Panel + Screen is lower in weight, easier to handle and results in reduced transportation costs. Ecoustic® Panel + Screen can be trimmed and installed without the need for additional finishes, which reduces labour and material costs.

Aluminium Edging

Ecoustic® panels can be fixed to walls with Ecoustic® aluminium edging. With its slim profile, Ecoustic® Edging profiles are ideal to use to install Ecoustic® panels as they create a lightweight, easily-assembled system that reduces the use of non-recyclable glues and tapes.