

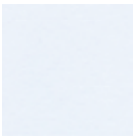
# Ecoustic® SC Panel

—  
An acoustic panel with a solid colour (SC) profile ideal for exposed edge applications



# Colours

## Solid Colour 9mm



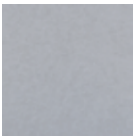
Milk



Dune



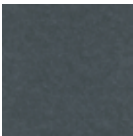
Marble



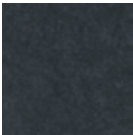
Dapple



Zinc



Alloy



Equinox

## Solid Colour 12mm



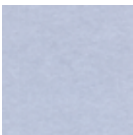
Snowdrop



Almond



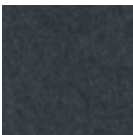
Oxide



Cool



Tungsten



Galaxy

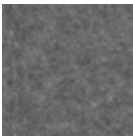
## Solid Colour 24mm



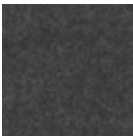
Pure



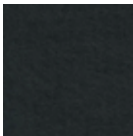
Stone



Ash



Graphite



Nero

Custom colours are available, minimums apply

Product may vary in colour due to the nature of the media  
Please refer to website for current colour range

# Ecoustic® Solid Colour Panel



PRODUCT	Ecoustic® Solid Colour Panel (SC)		
COMPOSITION	100% PET		
THICKNESS	9mm, 12mm + 24mm approx. +/- 1mm		
WEIGHT (+/- 10%)	9mm: 1900gsm 12mm: 2400gsm		
DIMENSIONS (+/- 5mm, 10mm)	9mm: 1220 x 2440mm approx. 12mm: 1220 x 2800mm approx. 24mm: 1210 x 2720mm approx.		
LIGHTFASTNESS ISO 105-B02	>7		
FIRE RATINGS			
AS/NZS 1530.3	9mm	12mm	24mm
Ignitability	9	8	8
Spread of Flame	0	0	0
Heat Evolved	3	1	1
Smoke Developed	6	5	5
AS/ISO 9705	BCA Group 1 SMOGRA <100  NZBC Group 1-S		
ASTM E84	9mm: Class C 12mm: Class A		
ACOUSTIC AS/ISO 354	9mm: $\alpha_w$ 0.78 / NRC 0.85 (200mm) 12mm: $\alpha_w$ 0.8 / NRC 0.85 (200mm) 24mm: $\alpha_w$ 0.45 / NRC 0.65 (DF) 24mm: $\alpha_w$ 0.82 / NRC 0.9 (150mm) 24mm: $\alpha_w$ 0.95 / NRC 0.95 (200mm)		
APPLICATION	Workstation screen, partition, wall panel, ceiling		
PLEASE NOTE	Onsite trimming to square each individual panel is essential. Variation in thickness, fibre mix and colour as well as flecks and other slight surface blemishes are an inherent feature of this product and are unavoidable. Variation from batch to batch may occur.		

## BENEFITS

**Lightweight, Easy to Handle + Install:** Compared to traditional panels, Ecoustic® SC is lower in weight, easier to handle and results in reduced transportation costs. Ecoustic® SC can be trimmed and installed without the need for additional finishes, which reduces labour and material costs. Installation + Care Guidelines are available on our website.

**Edging Profile:** 9mm, 14.5mm + 25mm natural anodised aluminium edging length at 2750mm (+/- 5mm) with counter sunk holes is available.

## Designed for the Environment

- Designed for disassembly + recyclable
- Ecoustic® SC panels are low-VOC + Oeko-Tex Certified

**Building Rating Systems:** SC panels will contribute the following points for Green Star, LEED + WELL building standards.

Criteria	Green Star	LEED	WELL
Low VOC	√	√	√
Recycling Program	√	√	NA
Third Party Certification	-	√	√
Toxic Material Reduction	NA	NA	√

## HOW TO SPECIFY

PRODUCT	Ecoustic® Solid Colour Panel
THICKNESS	9mm, 12mm or 24mm
COLOUR	Select from applicable SC colours for nominated thickness

# Acoustic Performance

## Ecoustic® Solid Colour Panel Comparison

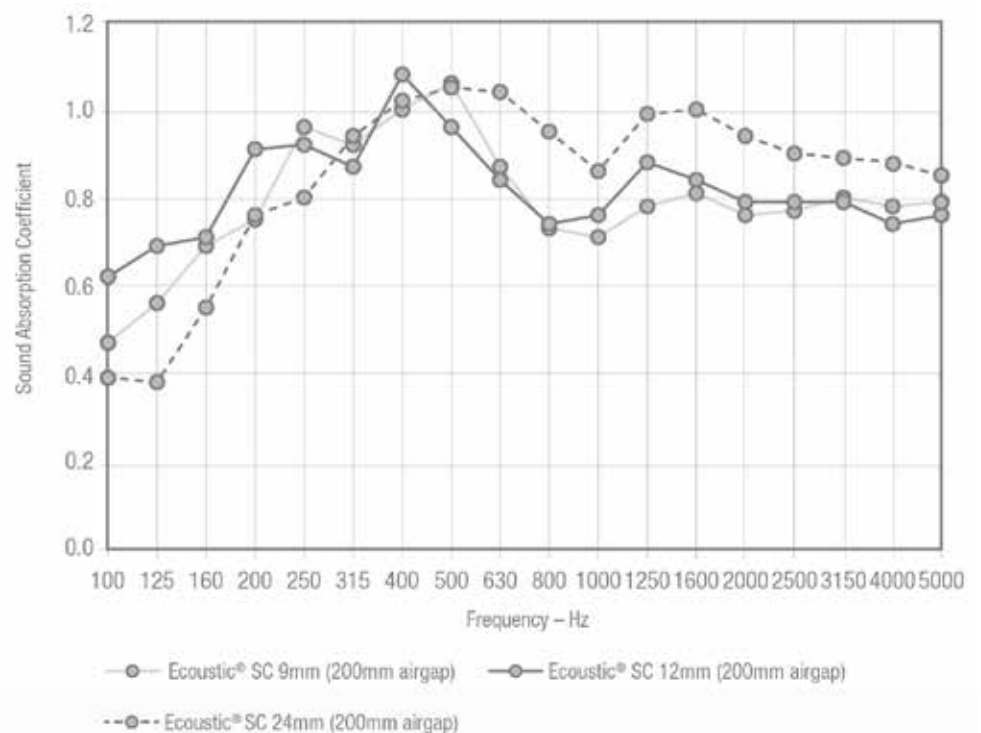
Ecoustic® SC 9mm + 12mm achieves an  $\alpha_w$  0.78 and NRC 0.85 rating and  $\alpha_w$  0.8 / NRC 0.85 rating respectively when the panel is installed with a 200mm airgap.

Ecoustic® SC 24mm is ideal for medium to high frequency absorption and achieves an  $\alpha_w$  0.45 / NRC 0.65 (Direct Fix),  $\alpha_w$  0.82 / NRC 0.9 (150mm airgap),  $\alpha_w$  0.95 / NRC 0.95 (200mm airgap).

The sound absorption has been tested in accordance with AS/ISO 354. For complete test reports please contact your local distributor.

9mm:  $\alpha_w$  0.78 / NRC 0.85 (200mm)  
12mm:  $\alpha_w$  0.8 / NRC 0.85 (200mm)  
24mm:  $\alpha_w$  0.95 / NRC 0.95 (200mm)

Frequency	$\alpha_s$ 9mm	$\alpha_s$ 12mm	$\alpha_s$ 24mm
100	0.47	0.62	0.39
125	0.56	0.69	0.38
160	0.69	0.71	0.55
200	0.75	0.91	0.76
250	0.96	0.92	0.80
315	0.92	0.87	0.94
400	1.00	1.08	1.02
500	1.06	0.96	1.05
630	0.87	0.84	1.04
800	0.73	0.74	0.95
1000	0.71	0.76	0.86
1250	0.78	0.88	0.99
1600	0.81	0.84	1.00
2000	0.76	0.79	0.94
2500	0.77	0.76	0.90
3150	0.80	0.79	0.89
4000	0.78	0.74	0.88
5000	0.79	0.76	0.85
NRC	0.85	0.85	0.95



# Acoustic Performance

## Ecoustic® Solid Colour 24mm Panel

Ecoustic® SC 24mm is ideal for medium to high frequency absorption and achieves an  $\alpha_w$  0.45 / NRC 0.65 (Direct Fix),  $\alpha_w$  0.82 / NRC 0.9 (150mm airgap),  $\alpha_w$  0.95 / NRC 0.95 (200mm airgap). The sound absorption has been tested in accordance with AS/ISO 354. For complete test reports please contact your local distributor.

$\alpha_w$  0.45 / NRC 0.65  
 $\alpha_w$  0.82 / NRC 0.9 (150mm airgap)  
 $\alpha_w$  0.95 / NRC 0.95 (200mm airgap)

Frequency	$\alpha_S$ 24mm	$\alpha_S$ 24mm
100	0.06	0.39
125	0.07	0.38
160	0.10	0.55
200	0.14	0.76
250	0.19	0.80
315	0.31	0.94
400	0.46	1.02
500	0.57	1.05
630	0.70	1.04
800	0.83	0.95
1000	0.92	0.86
1250	0.93	0.99
1600	0.99	1.00
2000	0.98	0.94
2500	0.98	0.90
3150	0.98	0.89
4000	0.94	0.88
5000	0.91	0.85
NRC	0.65	0.95

