



your system.



GRANDE

MULTI-BEVERAGE CAPSULE MACHINE

Safety instructions	4
Machines – Overview	8
Overview of buttons and symbols.....	9
Start-up of the appliance	10
Preparing beverages	11
Programming cup capacity.....	12
Daily cleaning	13
Resetting the capsule counter on request or when needed.....	14
Cleaning on request	15
Descaling on request	17
Changing filter on request (optional, sold separately).....	19
Cleaning, descaling and changing filter if required	21
Setting parameters:	
- Water hardness.....	22
- Water filter (optional, sold separately)	22
- Power OFF.....	23
- Cleaning interval	24
Evaporation of residual water.....	25
Frequently asked questions.....	26
Specifications and servicing.....	27
Automatic switch-off / Disposal instructions	28

Symbols and warnings



The warning triangle is used in the instructions where risks can result to the user or the machine when the safety instructions are not followed.



Warning:
Electric shock



Warning:
Risk of scalding



Prohibition:
Do not reach inside



Prohibition:
Do not drink



Instruction:
Read instructions



Recommendation



Recommended action

General safety instructions

If you fail to comply with the operating instructions and safety instructions, the machine may become dangerous to operate.

Please retain the operating instructions and pass them on with the appliance should this be passed on.

This appliance is used for hot beverage preparation in accordance with these operating instructions.

The manufacturer assumes no liability for consequences arising from any use of the appliance not in compliance with its intended purpose or non-compliance with the operating manual.

Do not start the appliance if it is damaged or if it does not work properly. In this case immediately unplug the mains plug from the wall socket and contact the service centre (for your service contact, please refer to page 27).

Commercial use

This appliance is intended to be used by expert or trained users in professional and similar areas, such as

- hotels, motels and other accommodation facilities;
- offices, conference rooms, sports facilities, waiting rooms and reception areas.

Household use

This appliance is intended to be used in household and similar areas, such as

- kitchens for shop staff, offices and other work environments,
- by hotel guests, in motels and other accommodation with breakfast.

Special safety instructions

- Do not leave the appliance unattended during beverage preparation. This machine can be used by children from the age of 8 years and older and by persons with reduced physical, sensory or mental abilities or who lack experience and knowledge provided they are supervised or have been instructed regarding the safe operation of the machine, and understand the resulting dangers.
- Cleaning or servicing of the machine that is normally carried out by the user must not be carried out by children unless they are 8 years old or older and act under supervision.
- The appliance and its connection cable must be kept out of the reach of children younger than 8 years. Children must not play with the machine.
- Your appliance is designed for indoor use only.
- In case of long periods of absence, vacation etc. the appliance must be emptied, cleaned and the mains plug must be removed from the socket. Refer to chapter "Cleaning, descaling and changing filter if required" (see page 21).
- Do not damage the mains cable with hot or sharp objects; do

not allow the mains cable to hang down (risk of tripping) or touch the cable with wet hands.

- Never lift the appliance by its lever.
- Never open or close the lever forcibly - risk of breakage!
- Never operate the appliance without its drip trays, drip grating or spent capsule container.
- For health reasons, fill the water tank exclusively with fresh and cold drinking water. Do not overfill the water tank.
- Only use beverage capsules intended for this appliance that bear the **K-fee® – your system** logo. Never use a damaged or deformed capsule.
- Before preparing a beverage, make sure that there is no used capsule in the brewing chamber and that the new capsule is inserted correctly.

Positioning the appliance

- Always place the appliance on a stable and level surface that is water-resistant. Do not place the appliance on its mains cable.
- Do not place the appliance on a hot surface (e.g. a cooker) or operate it next to heat sources or fires.
- Do not place the appliance in areas where a water jet is used for cleaning.

- It is not allowed to place the appliance into cupboards and to use it therein.

Electrical safety

- Stop using the appliance if the cable or plug are damaged. Contact the service centre (for your service contact please refer to page 27).
- Install the mains cable out of the reach of children.
- Verify that the mains voltage matches the specification on the type plate. For further appliance details, refer to "Specifications and servicing" on page 27.
- Only connect the appliance to an earthed 3-pin wall socket.

Your warranty rights may be voided if the unit is incorrectly connected.

Avoiding danger of electric shock

- The live parts are located inside the appliance. Therefore do not open the casing under any circumstances.
- Keep the appliance away from moisture and splash water.
- Never pour any type of liquid on top of the appliance.
- Never unplug the appliance by pulling the mains cable.

Avoiding danger from heat or cold

- Danger of scalding from hot spout. When a process has been completed and the lever is then opened, never hold your fingers under the spout - there is a risk of scalding from remaining hot liquid dripping from the spout! When brewing has finished, open the lever slowly in order to eject the capsule; take care, do not bend over the capsule insertion opening (danger of scalding due to hot liquid splashes).
- Take care when emptying the drip tray - the water can be very hot.
- Never remove the lower drip tray during operation - danger of scalding!
- Never open the lever on the appliance during brewing, rinsing or descaling. When a process has been completed and the lever is then opened, never hold your fingers under the spout - there is a risk of scalding from remaining hot liquid dripping from the spout!
- Never insert your fingers into the capsule insertion opening.
- Protect the appliance from frost.

- Operate the appliance only within the specified temperature range (10 - 45 °C).
- Evaporate the residual water if the appliance is to be transported or stored during frosty conditions (temperatures below 0 °C), refer to "Evaporation of residual water" on page 25). Danger of scalding: the steam temperature can be up to 120 °C!

Hygiene and cleaning

- Only use capsules with a sell-by date that has not yet expired.
- Store capsules in a suitable location.
- For health reasons it is recommended to rinse the appliance 5 x before every first beverage preparation and 1 x after every drink poured. Read the instructions under "Daily cleaning" on page 13.
- Before cleaning the appliance with a damp cloth, unplug the mains cable and allow the appliance to cool down.
- Do not clean the appliance under running water or with a water jet.

- Clean the appliance regularly and in accordance with the operating instructions to prevent risks to health.
- Only use cleaning/descaling agents and water filters that are suitable for the appliance. Visit our website for more information about products and/or authorised dealers.
- Danger to health! - Carefully read the cleaning and descaling agent user instructions as well as those of the water filter and comply with the safety instructions.

Service and repairs

- The manufacturer accepts no liability for consequences arising from both internal and external modification to the appliance.
- Never open the appliance to carry out modifications yourself.
- Apart from normal use, all other work such as repairs or replacement of the mains cable may only be carried out by an authorised customer service company.
- If the appliance, mains cable or plug are damaged, it is not permitted to use the appliance. Contact the service centre (for your service contact please refer to page 27).



Only use original K-fee® – your system capsules! Look out for the red K-fee® – your system logo and the characteristic grooved shape of the capsules.

Using non-original capsules involves the following risks:

1. Health hazards

Due to differences in brewing technique and capsule structure, the use of non-genuine capsules can result in high pressure releases - risk of scalding!

2. Danger to the machine and loss of warranty

When using non-original capsules, differences in the brewing process and the capsule design will cause damage to the machine which means that any warranty claims may be forfeited!


The manufacturer and his distribution partner cannot be held liable for any injury or damage which is the direct or indirect result of non-original capsules being used with this machine.


These operating instructions are also available as a download from our website:


www.k-fee.com.au

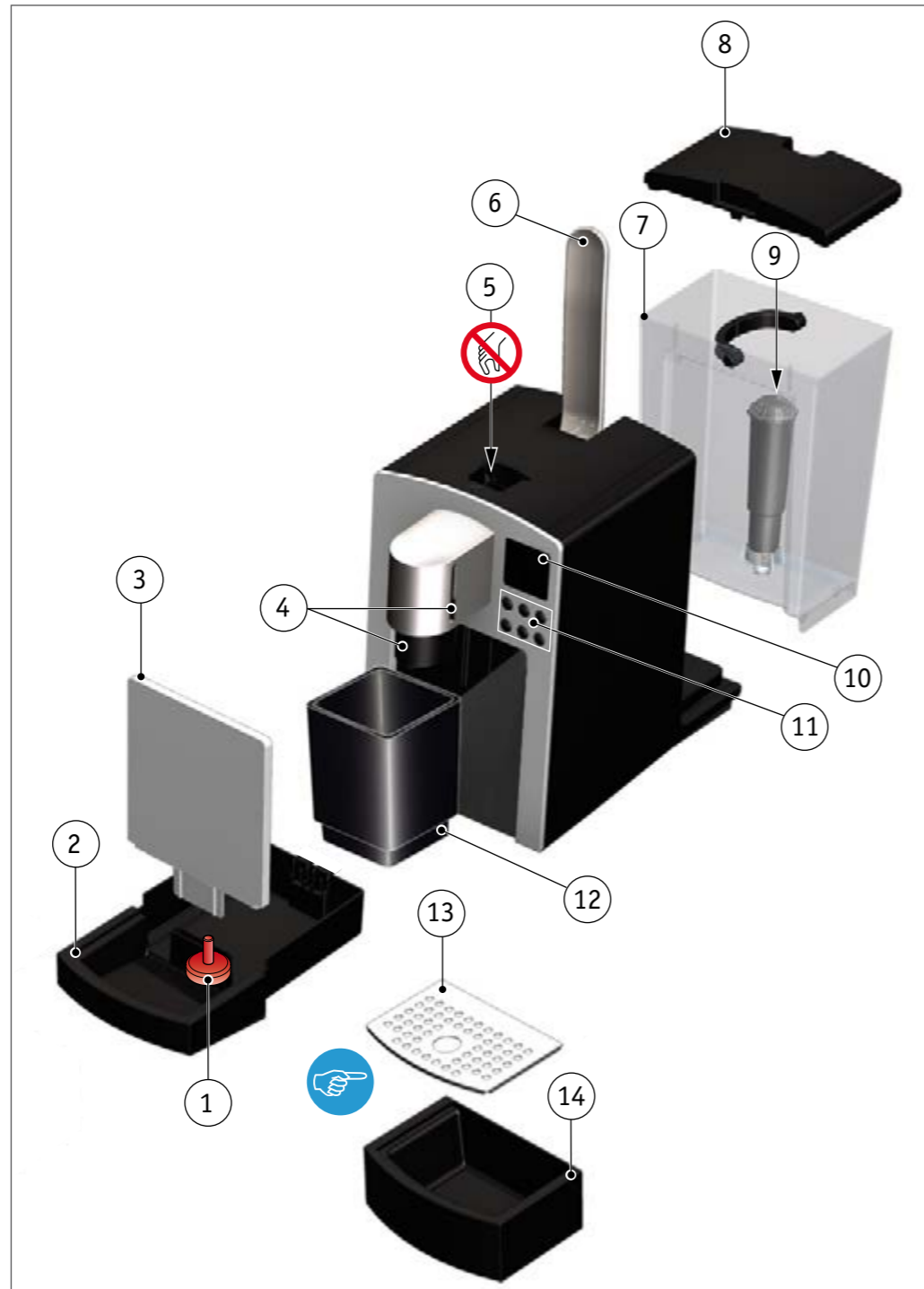
Machines – Overview







- 1 Float
- 2 Lower drip tray
- 3 Drip tray wall
- 4 Height-adjustable spout
- 5 Capsule insertion opening
- 6 Lever
- 7 Water tank
- 8 Water tank cover
- 9 Water filter (optional / sold separately)
- 10 Display
- 11 Controls
- 12 Spent capsule container
- 13 Drip grating
- 14 Upper drip tray











 **Risk of injury!** Four pointed needles open the capsule in the machine. Do not reach into the capsule insertion opening in order to avoid injuries.

 Remove the protective foil from the drip grating (13) before first use.

 All illustrated parts and these original operating instructions form part of the delivered package. Before starting up the machine, please check that you have received all parts.



Buttons	Description	Buttons	Description
	Small "espresso" cup		Milk button
	Large "lungo" cup		Rinse button
	Extra large cup		On/Off button

Symbols	Description
	<ul style="list-style-type: none"> All beverage symbols flash after switching the machine on for as long as the machine is heating up. The respective beverage symbol flashes fast when a fill quantity is programmed. When a beverage is prepared, the respective beverage symbol flashes.
	
	
	
	<ul style="list-style-type: none"> This symbol lights up when a rinsing cycle is required. This symbol flashes during the rinsing cycle.
	<ul style="list-style-type: none"> This symbol lights up when the machine has to be cleaned (after the pre-selected cleaning interval). The symbol will remain lit until the cleaning has been carried out.
	<ul style="list-style-type: none"> This symbol lights up when the machine requires descaling. The symbol will remain lit until the descaling has been carried out.
	<ul style="list-style-type: none"> This symbol lights up when the spent capsule container has to be emptied (after 29 capsules have been used). The symbol will remain lit until the capsule counter has been reset.
	<ul style="list-style-type: none"> This symbol lights up when the water tank is empty. The water tank has a capacity of approx. 3.5 l.
	<ul style="list-style-type: none"> This symbol lights up when the water filter has to be replaced (after 50 l of water). The symbol remains lit until the filter has been replaced.

Overview of buttons and symbols

Display of symbols



i Presettings:
 Small cup..... approx. 45 ml
 Large cup approx. 105 ml
 Extra large cup approx. 200 ml
 Milk cup approx. 65 ml

i Cleaning, descaling and filter symbols remain lit until the respective operations have been completed.

Start-up of the appliance



Please read the safety instructions before starting up the appliance.

If you decide to insert the water filter, do not screw the filter into the water tank until **after** starting up the machine; proceed to rinse the machine again with at least 200 ml of water. Activate the "Filter available" setting. Refer to the "Parameter setting - water filter" instructions (see page 22).

If the machine has been exposed to temperatures below freezing, please do not switch the machine on for at least 3 hours so that it can come back to room temperature. It is possible that a frozen or very cold machine will not function properly.

Before using the machine for the first time, run 4 rinsing cycles. To do that, press the rinse button once the previous rinsing process has been completed.

Risk of scalding!
Very hot water.

1 Firstly check the voltage on the type plate (see underside of machine).

2 Remove water tank and rinse it thoroughly with a mild cleaning agent.

3 Fill water tank with fresh water. max 3.5 l

4 Re-insert water tank.

5 Briefly press the on/off button. Machine is heating up.

6 Close lever completely. Place a container under the spout.

7 Press the rinse button to start rinsing process.

8 Wait until rinsing process has finished. Then empty the container.

9 The appliance is ready for operation.

1 Adjust drip tray to desired cup size.

A With upper drip tray. max 110 mm

B With lower drip tray. max 160 mm

2 Remove the protective foil, if present, from the capsule. Open lever and insert capsule.

3 Adjust height of spout. Close lever and press the beverage button.

4 Brewing in progress.

5 Beverage dispensed.

6 Open lever, capsule falls into container.

7 To switch the machine off, briefly press the on/off button.

Prepare beverages (e.g. espresso)

Risk of injury!
Do not reach into the capsule insertion opening.

When the machine is not used, it will switch off automatically depending on the presetting. If necessary, use the on/off button to re-activate and rinse the machine (see page 15) before preparing new drinks.

Important: do not insert the capsule until the rinsing cycle has been completed.

The spout can be moved either downwards or upwards with the help of a sliding device (on both sides of the spout).

Risk of scalding!
Very hot drink. Do not open lever during the brewing process. Do not reach under the spout.

Stop the brewing process by pressing any button a second time.

For hygienic reasons, rinse the appliance once after each beverage pouring.

Programming cup capacity

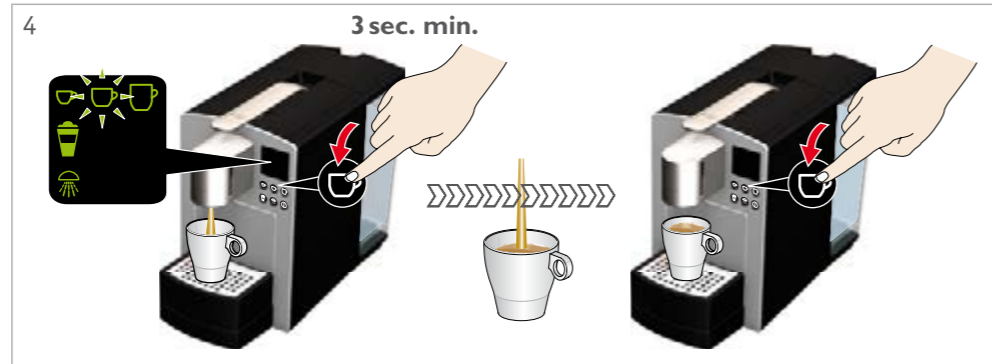
Button	Factory setting [ml]	Setting range [ml]
	45	30 - 100
	105	80 - 200
	200	100 - 240
	65	65 - 130



1 The appliance is ready for operation. Place desired cup under the spout.

2 Open lever and insert desired capsule.

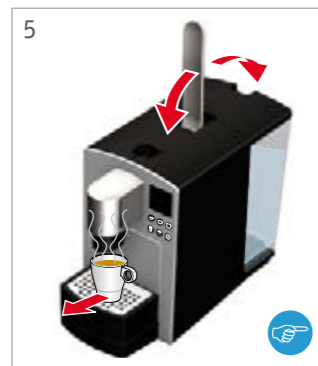
3 Close lever completely.



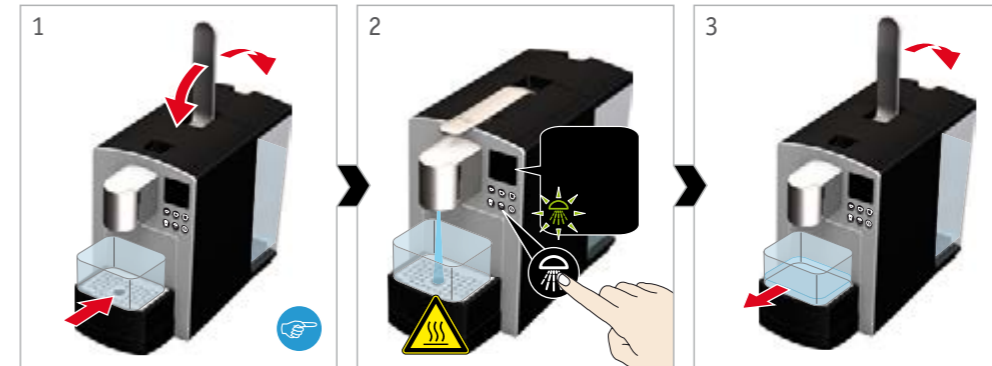
4 Hold down the button for the desired beverage (e.g. "lungo") for at least 3 sec.

The respective symbol will start flashing on the display. Then release the button - the machine continues brewing.

Press the same button again as soon as the desired cup filling quantity has been reached. The machine stops the brewing process and saves the new cup filling quantity.



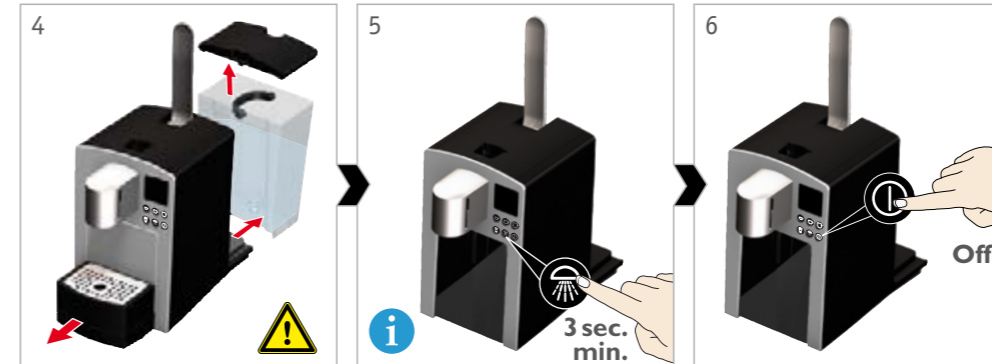
5 Open lever, capsule falls into container.



1 Place a container under spout. Open lever and close again.

2 Push button briefly to rinse the appliance once.

3 Empty container and open lever.



4 Remove drip trays, spent capsule container and water tank.

5 To reset the capsule counter: hold down the rinse button for at least 3 sec.

6 To switch the machine off, briefly press the on/off button.



7 Take drip trays apart.

8 Empty all the containers.

9 Clean and reassemble all parts.

Daily cleaning

- For health reasons it is recommended to rinse the machine
 - 5 x before dispensing the first beverage,
 - 1 x every time after dispensing a beverage.

Risk of scalding!
Very hot water.

Risk of damage!
Before removing the drip trays, make sure that the spout is in the uppermost position.

i Resetting the capsule counter is described in detail on page 14.

Risk of damage!
Only use water, dish soap and a mild cloth (no scouring agents or aggressive cleaning products). Do not wash machine parts in the dishwasher.

Reset the capsule counter on request

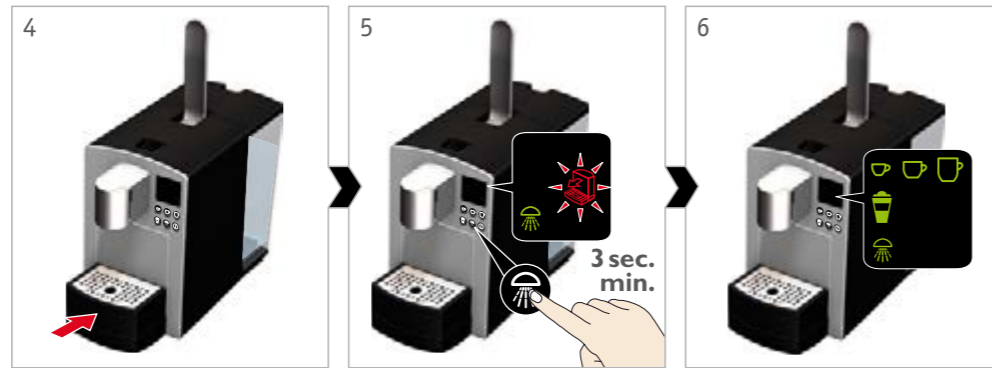
i As soon as there are 29 used capsules in the capsule container a warning symbol lights up. The capsule counter is reset automatically after descaling, cleaning or replacing the filter.



1 The machine signals that the capsule container is full.

2 Open the lever. Remove the drip trays and capsule container.

3 Empty all the containers.



4 Re-insert drip trays and capsule container.

5 Hold down the rinse button for at least 3 sec. in order to reset the capsule counter.

6 The container symbol will flash briefly. After that the machine is again ready for use.

Resetting the capsule counter when needed

i In order to avoid an error display, always reset the capsule counter when the capsule container has been emptied (e.g. after the daily cleaning).



1 The appliance is ready for operation.

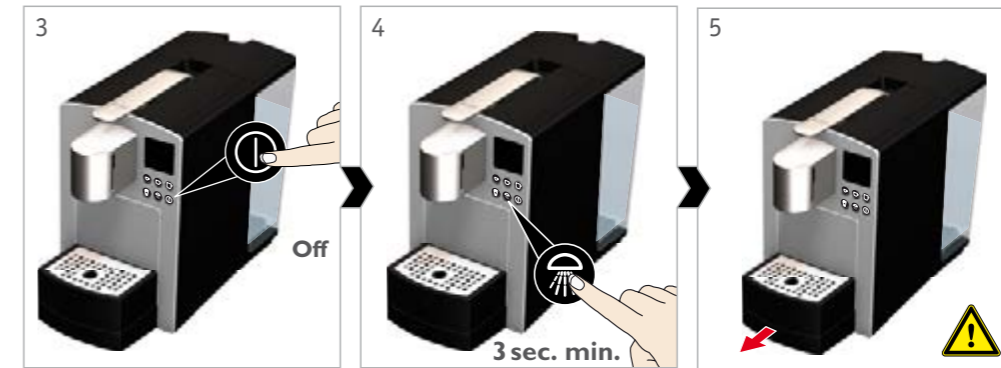
2 Hold down the rinse button for at least 3 sec. in order to reset the capsule counter.

3 The container symbol will flash briefly. After that the machine is again ready for use.



1 The machine will automatically request a cleaning cycle when the pre-set cleaning interval has been reached.

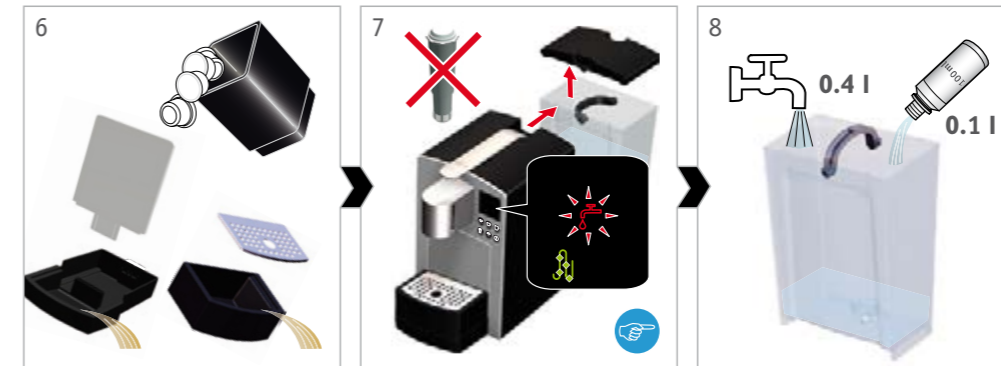
2 The machine shows a request for cleaning on the display.



3 To switch the machine off, briefly press the on/off button.

4 Press the rinse button for at least 3 sec.

5 Remove drip trays with spent capsule container.



6 Empty container and then re-insert into the appliance.

7 Remove and empty water tank.

8 Fill cleansing liquid (100 ml) and 0.4 l of water into the water tank.

Cleaning on request (I)

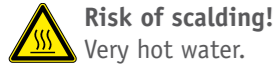
! **Danger to health!** Carefully read the user instructions for the cleansing agent and follow the safety instructions.

i If the cleaning process is interrupted by pressing the on/off button, the appliance returns to the cleaning mode automatically when switched on again.

! **Risk of damage!** Before removing the drip trays, make sure that the spout is in the uppermost position.

i The water filter must be removed prior to cleaning.

Cleaning on request (2)



Risk of scalding!
Very hot water.



Danger to health:
Do not drink any cleansing liquid.



The appliance rinses at intervals until the water tank is empty.



Risk of scalding!
Very hot water.



The appliance rinses with 250 ml of water.



In order to terminate the cleaning process, the water tank has to be taken off and then re-inserted.

9 Insert water tank. Place a container (min. 0.6 l) under the spout.

10 Press rinse button.

11 Wait until rinsing process is finished. Then empty container.

12 Clean water tank, re-fill water tank (min. 300 ml) and re-insert it.

13 Remove drip trays.

14 Empty and clean drip trays, re-insert drip trays with capsule container.

15 Place a container under spout. Press rinse button.

16 Wait until rinsing process is finished. Then empty container.

17 Remove water tank, fill the tank and re-insert it. The light of the cleaning symbol goes out.

1 Only use descaling agents that are suitable for the appliance. For further information, please visit our website at: www.k-fee.com.au

2 The machine shows a request for cleaning on the display.

3 To switch the machine off, briefly press the on/off button.

4 Press rinse button for at least 3 sec.

5 Remove drip trays with spent capsule container.

6 Empty container and then re-insert into the appliance.

7 Remove and empty water tank.

8 Fill water tank with descaling agent (100 ml) and 0.4 l of water.

Descaling on request (1)



Danger to health:
Carefully read the user instructions of the descaler and comply with the safety instructions.



If the descaling process is interrupted by pressing the on/off button, the appliance returns to the descaling mode automatically when switched on again.



Risk of damage!
Before removing the drip trays, make sure that the spout is in the uppermost position.



The water filter must be removed before descaling.

Descaling on request (2)

Risk of scalding!
Very hot water.

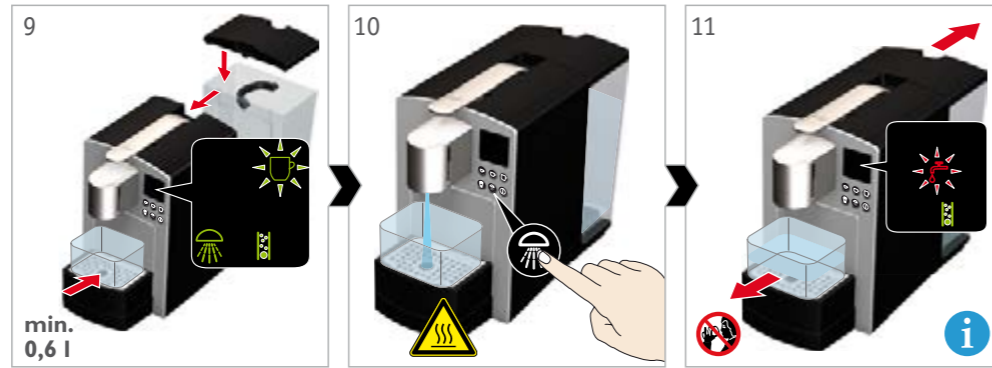
Danger to health:
Do not drink any cleansing liquid.

The appliance rinses at intervals until the water tank is empty.

Risk of scalding!
Very hot water.

The appliance rinses with 250 ml of water.

In order to terminate the descaling process, the water tank has to be taken off and then re-inserted.



9 Insert water tank. Place a container (min. 0.6 l) under the spout.

10 Press rinse button.

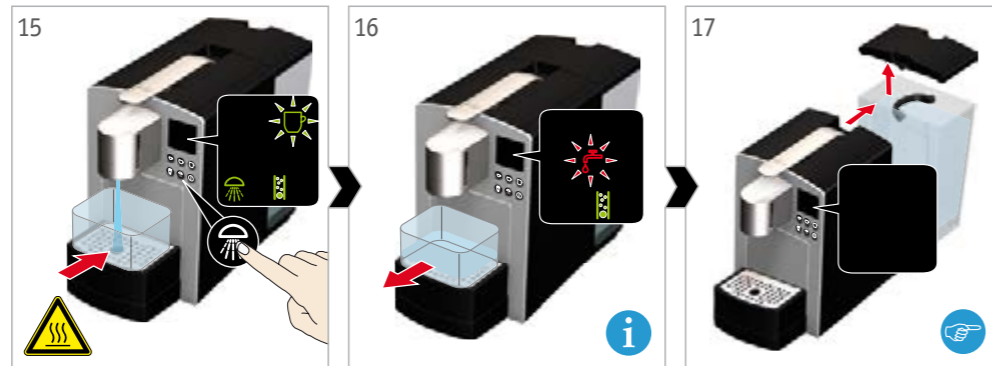
11 Wait until rinsing process is finished. Then empty container.



12 Clean water tank, re-fill water tank (min. 300 ml) and re-insert it.

13 Remove drip trays.

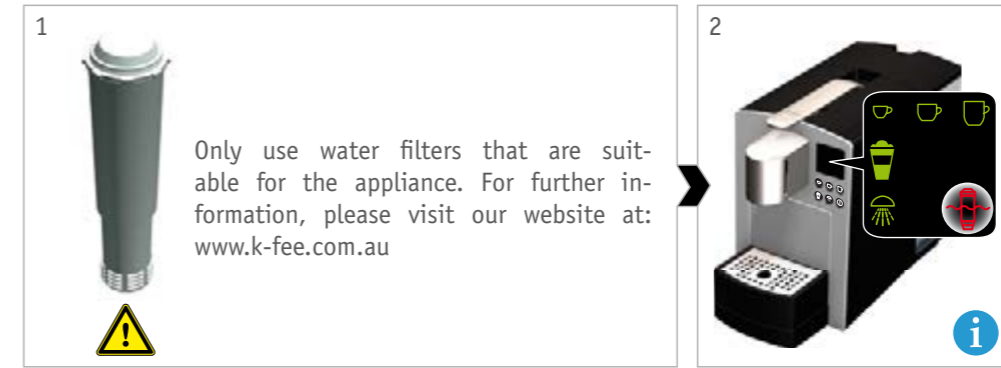
14 Empty and clean drip trays, re-insert drip trays with capsule container.



15 Place a container under spout. Press rinse button.

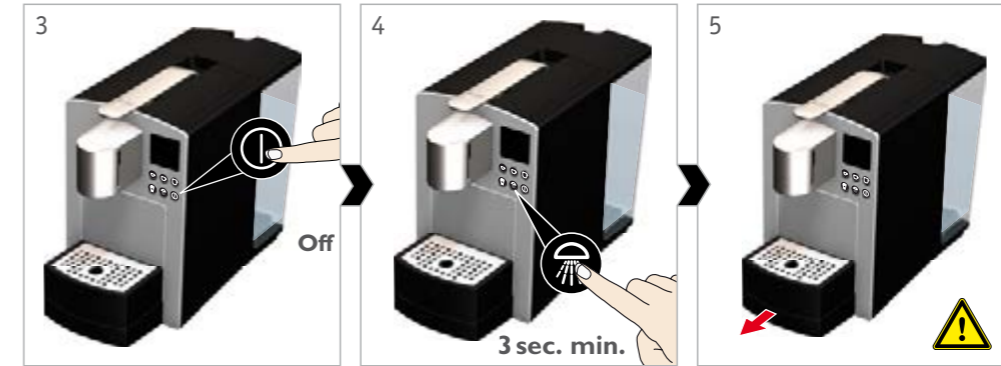
16 Wait until rinsing process is finished. Then empty container.

17 Remove water tank, fill the tank and re-insert it. The light of the descaling symbol goes out.



1 Only use water filters that are suitable for the appliance. For further information, please visit our website at: www.k-fee.com.au

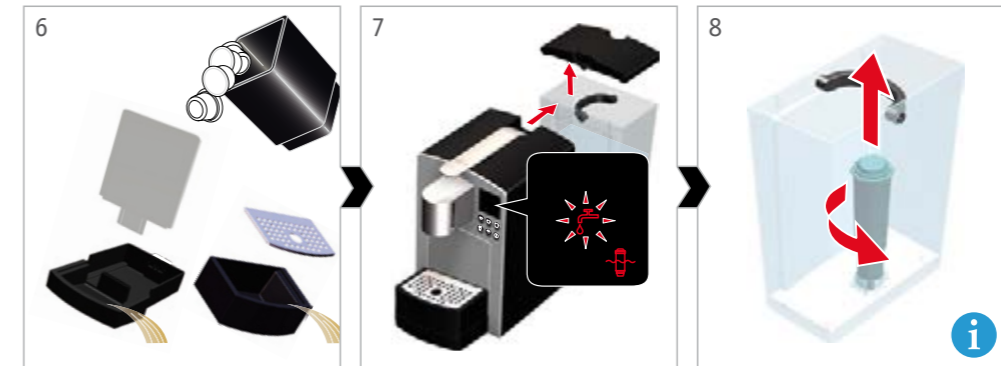
2 The machine prompts for a filter replacement on the display.



3 To switch the machine off, briefly press the on/off button.

4 Press rinse button for at least 3 sec.

5 Remove drip trays with spent capsule container.



6 Empty all containers and re-insert.

7 Remove and empty water tank.

8 Unscrew used water filter.

Changing filter on request (1, optional, sold separately)

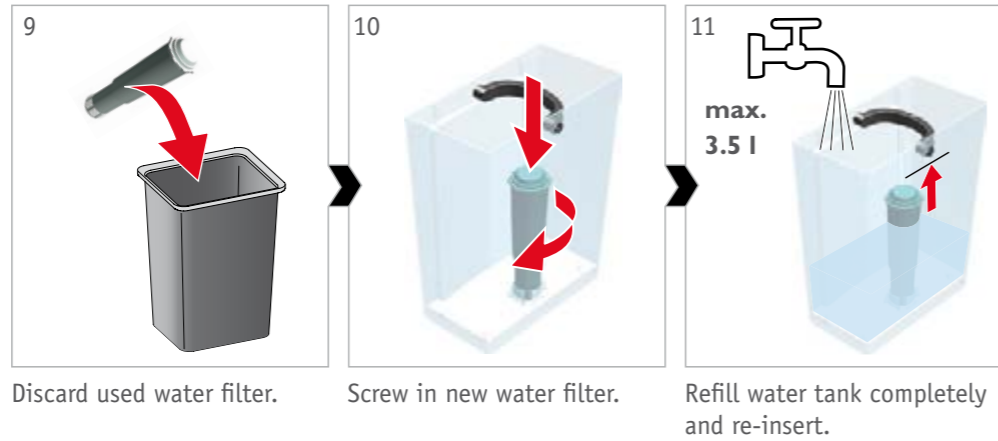
Danger to health:
Carefully read the user and safety instructions for the water filter. For hygiene reasons we recommend changing the water filter every 3 months at the latest.

The filter symbol will continue to be displayed in red until the water filter has been replaced.

Risk of damage!
Before removing the drip trays, make sure that the spout is in the uppermost position.

If the filter replacement process is interrupted by pressing the on/off button, the appliance returns to the "Filter replacement" mode automatically when switched on again.

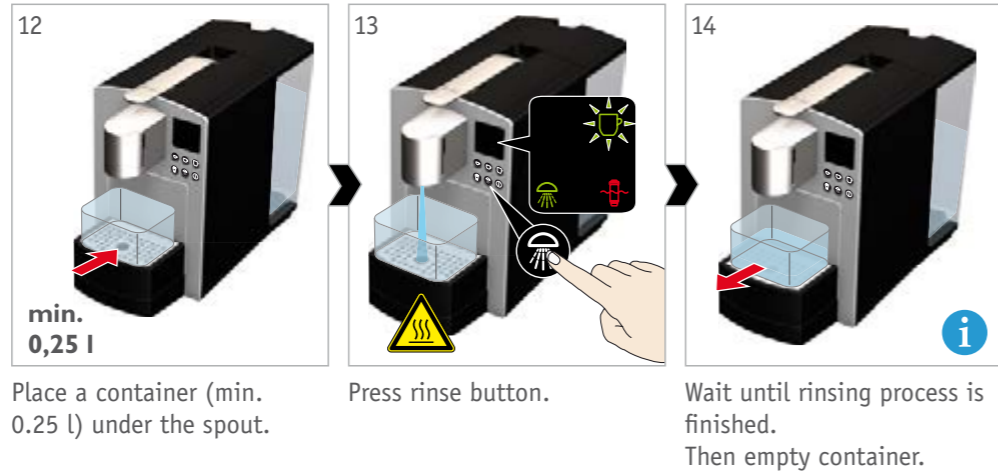
Changing filter on request
(2, optional, sold separately)



Discard used water filter.

Screw in new water filter.

Refill water tank completely and re-insert.



Place a container (min. 0.25 l) under the spout.

Press rinse button.

Wait until rinsing process is finished. Then empty container.

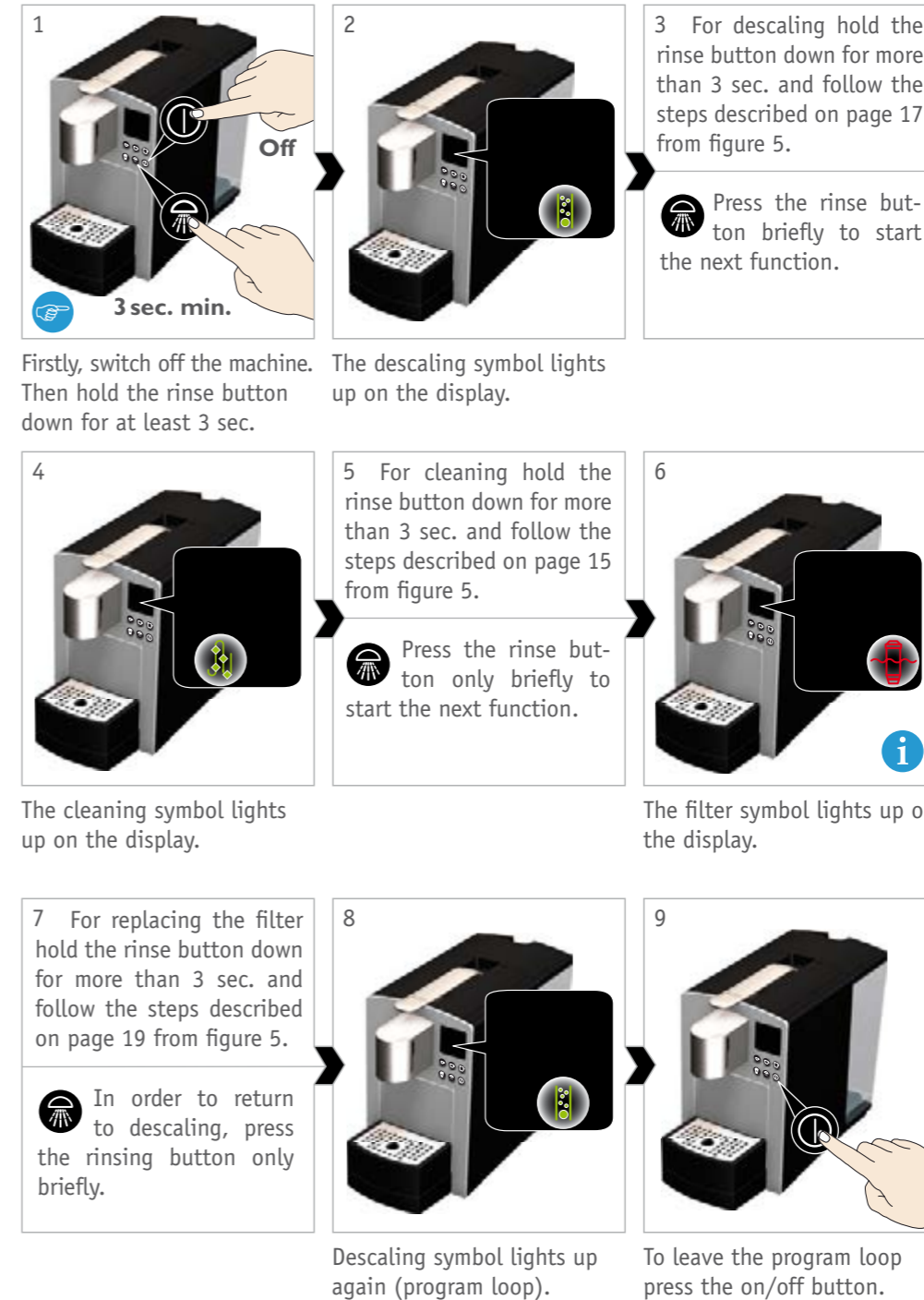


The light of the water filter symbol has gone out. Then the machine switches off automatically.

Risk of scalding!
Very hot water.

The appliance rinses with 200 ml of water.

When using a water filter for the first time, set the respective parameter to "on". Please read the instructions on "Setting parameters - water filter" on page 22-23. The setting will be retained, also following an interruption in the power supply.



Firstly, switch off the machine. Then hold the rinse button down for at least 3 sec.

The descaling symbol lights up on the display.

3 For descaling hold the rinse button down for more than 3 sec. and follow the steps described on page 17 from figure 5.

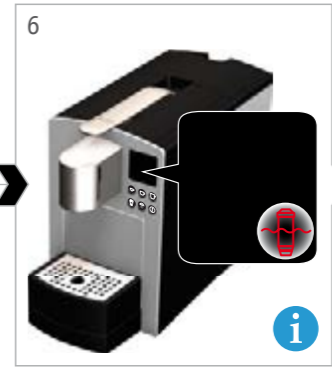
Press the rinse button briefly to start the next function.



The cleaning symbol lights up on the display.

5 For cleaning hold the rinse button down for more than 3 sec. and follow the steps described on page 15 from figure 5.

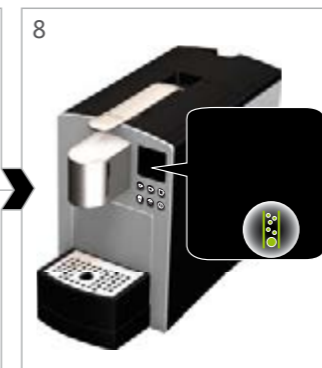
Press the rinse button only briefly to start the next function.



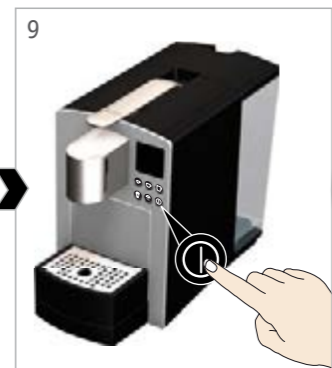
The filter symbol lights up on the display.

7 For replacing the filter hold the rinse button down for more than 3 sec. and follow the steps described on page 19 from figure 5.

In order to return to descaling, press the rinsing button only briefly.



Descaling symbol lights up again (program loop).



To leave the program loop press the on/off button.

Cleaning, descaling and filter replacement on request

This function can be used to start descaling or cleaning or to carry out a filter change at the operator's discretion.

The filter symbol will only appear if the "water filter" parameter has been set to "on".

Setting parameters:
water hardness

i For an overview for determining the degree of water hardness, see page 26.

Water hardness	Display of symbols
hard	
medium	
soft	

i To abort the setting process press the on/off button.

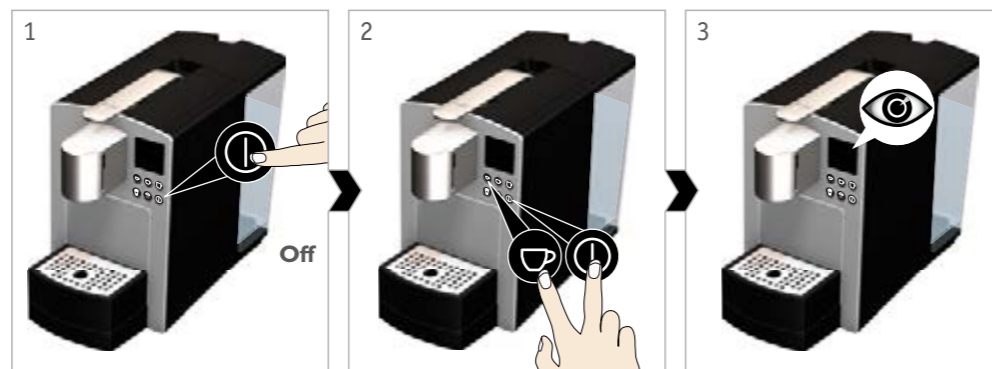
i The set water hardness and the water filter determine the quantity of water used before descaling:

Water hardness	Water consumption [L] without / with water filter	
hard	40	400
medium	80	800
soft	120	1200

Setting parameters:
water filter (1)

Water filter	Display of symbols
off	
on	

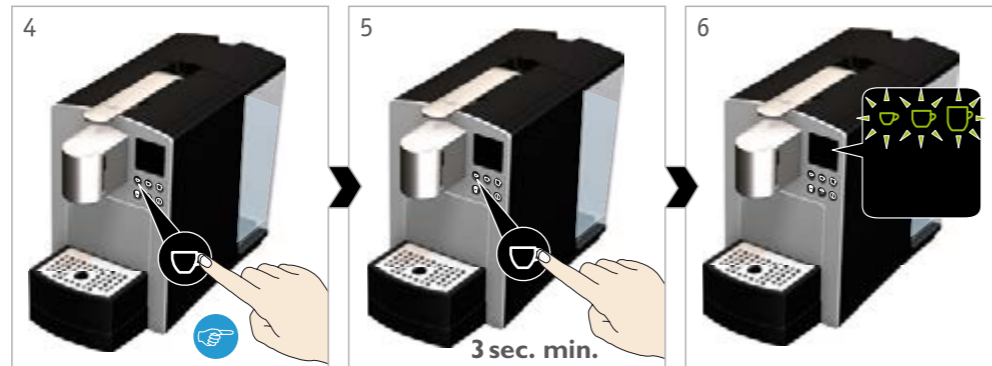
i **Factory setting:**
No water filter (off)



1 The machine must be switched off: press the "on/off" button briefly.

2 Press the "espresso" and on/off buttons together.

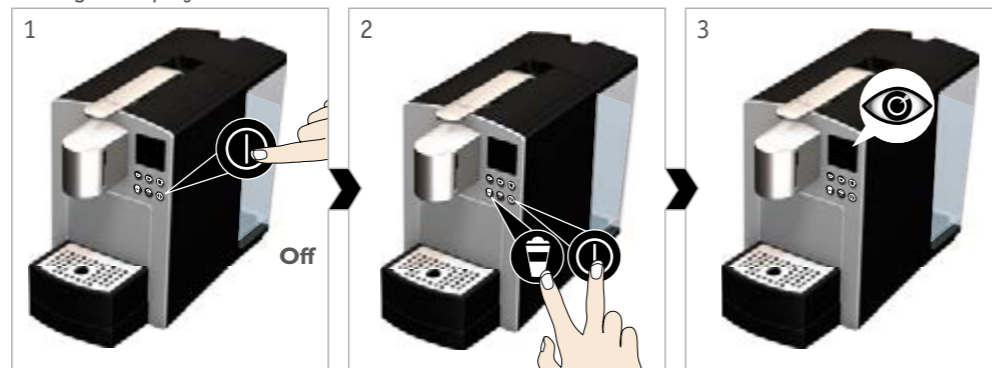
3 The current water hardness is shown on the display (see table).



4 Press the "espresso" button repeatedly and briefly until the required water hardness setting is displayed.

5 Press the "espresso" button for at least 3 sec. to store the setting.

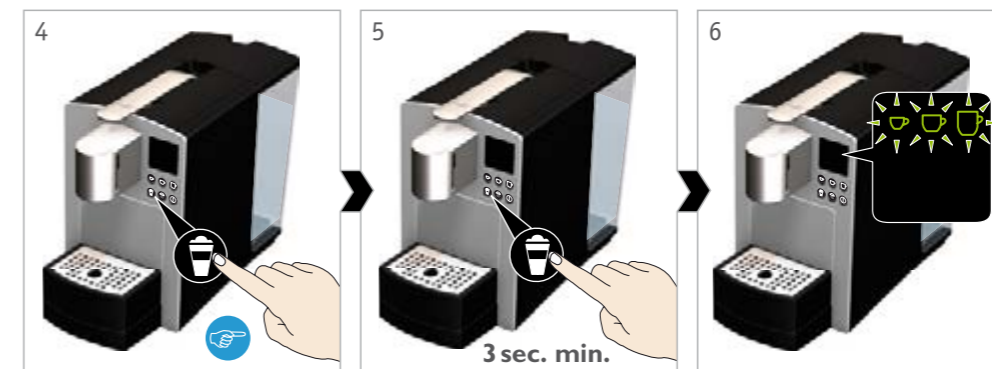
6 As confirmation, all cup symbols will flash once.



1 The machine must be switched off: press the "on/off" button briefly.

2 Press the milk and on/off buttons together.

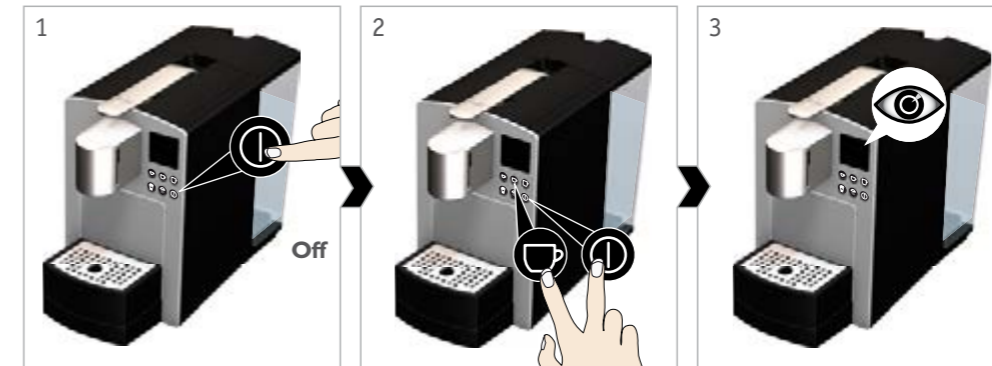
3 The current setting is shown on the display (see table).



4 To change the setting, press the milk button again briefly.

5 Press the milk button for at least 3 sec. to store the setting.

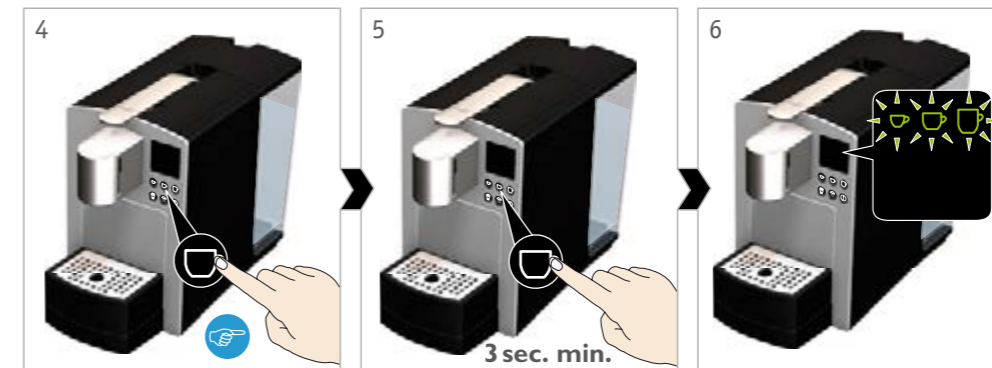
6 As confirmation, all cup symbols will flash once.



1 The machine must be switched off: press the "on/off" button briefly.

2 Press the "Lungo" and on/off buttons together.

3 The current time to switch-off is shown on the display (see table).



4 Press the "Lungo" button repeatedly and briefly until the required time to switch-off is displayed.

5 Hold the "Lungo" button down for at least 3 sec. to store the setting.

6 As confirmation, all cup symbols will flash once.

Setting parameters:
water filter (2)

i To abort the setting process press the on/off button.

Parameter setting:
power-off

i Information on the automatic switch off mechanism can be found on page 28.

Time to switch-off	Display of symbols
5 min	
15 min	
30 min	
60 min	
180 min	

i To abort the setting process press the on/off button.

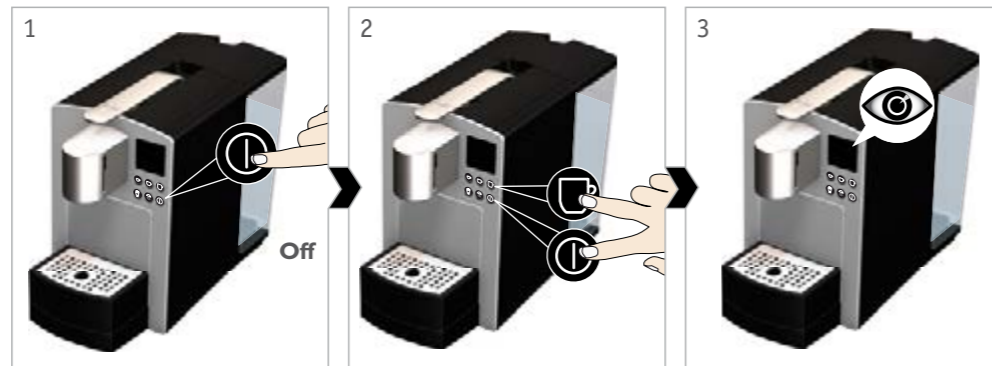
Parameter setting:
cleaning interval

i The cleaning interval determines after how many used capsules the cleaning symbol lights up on the display.

Used capsules	Display of symbols
100	
200	
300	
off	

i Put the setting to "off" to quit the cleaning prompt. For hygiene reasons we recommend retaining the factory setting (after 100 capsules).

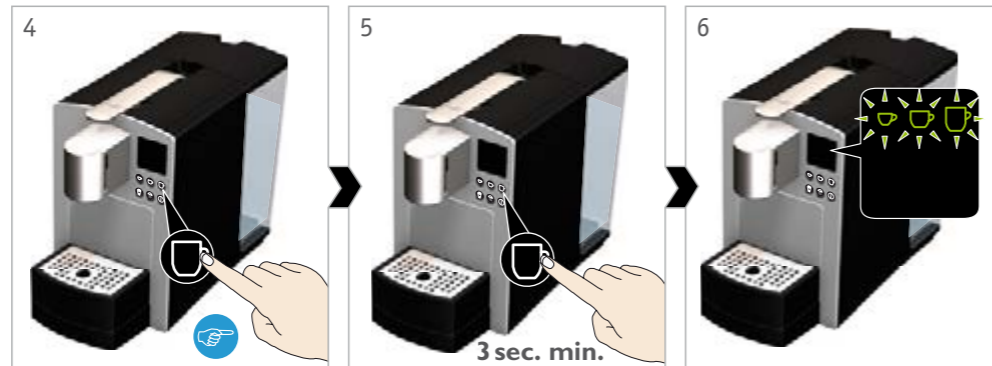
i To abort the setting process press the on/off button.



1 The machine must be switched off: press the "on/off button" briefly.

2 Press the "extra large cup" and on/off buttons together.

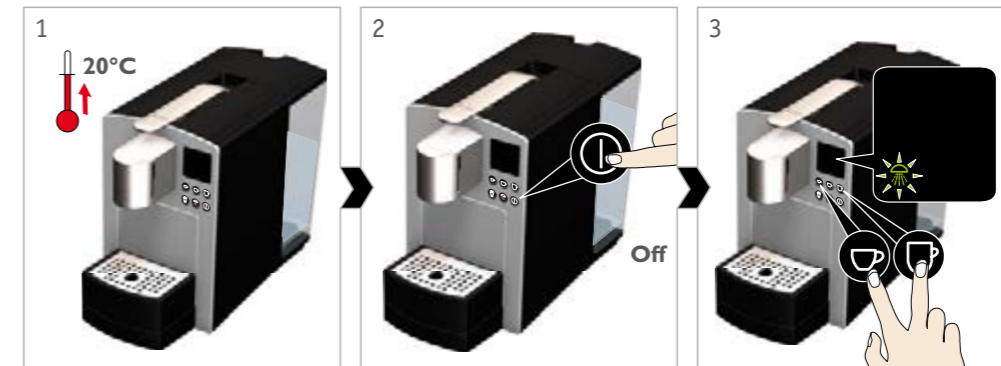
3 The current cleaning interval is shown on the display (see table).



4 Press the "extra large cup" briefly and repeatedly until the required cleaning interval is displayed.

5 Hold down the "extra large cup" button for at least 3 sec. to store the setting.

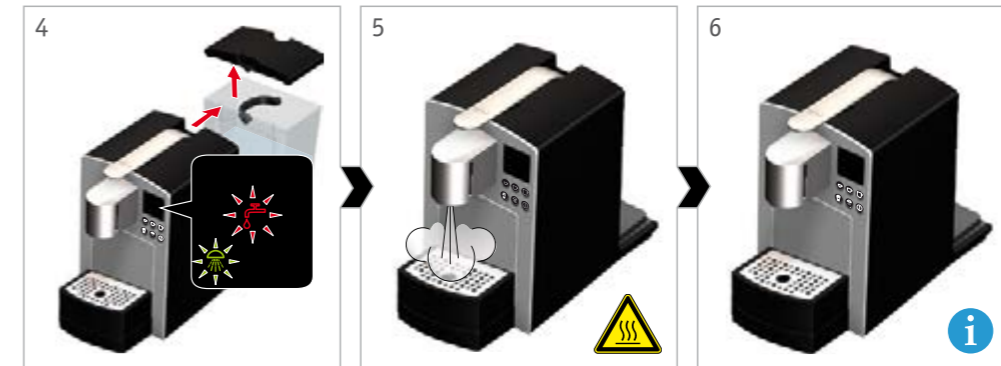
6 As confirmation, all cup symbols will flash once.



1 Allow appliance to warm up to room temperature if necessary.

2 The machine must be switched off: press the "on/off" button briefly.

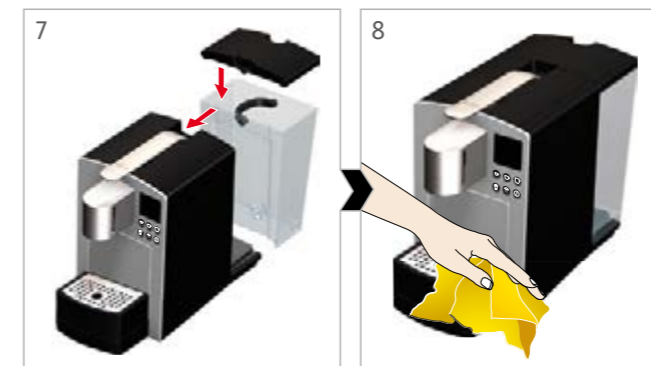
3 Hold down the "espresso" and "extra large cup" buttons for at least 3 sec.



4 Remove and empty water tank.

5 Evaporation starts.

6 Wait until evaporation is finished and the machine switches off.



7 Re-insert the empty water tank.

8 Dry front of appliance by wiping with a cloth.

Evaporating the residual water

i This function evaporates and thus removes residual water from inside the appliance. This prevents residual water from leaking out or freezing inside the machine.

⚠ Risk of scalding!
The steam can reach a temperature of up to 120 °C. Do not reach under the spout. Keep adequate distance from the spout.

i Evaporating the residual water takes max. 2 minutes.

Frequently Asked Questions



Caution!

The machine will only work with beverage capsules of those brands carrying the K-fee® – your system logo.

The use of non-original capsules can involve the following risks: risk to health, damage to the appliance and the possible loss of warranty rights.

The cup symbols and the rinse symbol and/or "replenish water" symbol flash fast?
Switch off and disconnect machine from mains, allow to cool down. Wait for at least 1 minute; insert the plug into the mains and switch the machine back on. Contact service centre if error recurs.
Drink not dispensed properly?
Press the lever down completely. If necessary, descale the appliance – refer to the section "Cleaning, descaling and changing filter if required".
Drink dispensed with delay?
Appliance is re-heating.
Is the spent capsule container overfull and jammed?
Try to remove the spent capsule container by jiggling the container gently to and fro.
After inserting a capsule, the lever cannot be closed completely?
Check that there is no used capsule in the brewing chamber, that the container for used capsules is not overfull and that the newly inserted capsule is in the correct position.
Is the beverage not hot enough?
If necessary, descale the appliance – refer to the section "Cleaning, descaling and changing filter if required".
All cup symbols do not stop flashing?
In such a case, switch off appliance and allow to cool down before using it again.
Reset appliance to factory settings?
Switch off the machine and unplug the mains cord from the wall socket. Hold down both the rinse button and on/off button and plug in the machine; then release both buttons. As confirmation, the 3 cup symbols light up briefly on the display.
What is Eco mode?
The machine switches off automatically and returns to Eco mode when it is unused for more than 5 minutes (factory setting). The appliance uses considerably less energy in Eco mode (less than 0.5 W) than when it is heated up and ready for operation.

Overview of water hardness:	EN	EN
Hardness range	Water hardness in mmol	Water hardness in German degrees of hardness (°d)
1 - soft	< 1.3	< 7
2 - medium	1.3 - 2.5	7 - 14
3 - hard	2.5 - 3.8	14 - 21

i For further information regarding water hardness in your area, contact your water company. The water hardness level entered in the appliance determines the interval between descaling for optimal operation.

	220 - 240 V, ~ 50 Hz, max. 1455 W
	1.45 m
P	max. 19 bar
	approx. 3.5 l
	approx. 4.5 kg
	A = 200 mm B = 406 mm C = 316 mm
	max. 160 mm
	10°C - 45°C
	~ 90°C

After Sales Support:

If you have any queries or suggestions, please send us an email or call us on:

✉ info@k-fee.com.au

☎ AU: **1800 469 373** (free of charge on land lines; or information on mobile phone surcharges, please contact your mobile phone provider.)

🌐 www.k-fee.com.au

Model: **K-fee OOH 21**

We advise you to keep the original packaging so that you can return the machine to an authorised customer centre in case repairs are necessary.

Specifications and servicing

If you have any queries or suggestions, please send us an email or call us on:

✉ **info@k-fee.com.au**

☎ AU: **1800 469 373** (free of charge on land lines; for information on mobile phone surcharges, please contact your mobile phone provider.)

🌐 **www.k-fee.com.au**

Model: **K-fee OOH 21**

We advise you to keep the original packaging so that you can return the machine to an authorised customer centre in case repairs are necessary.

30134460_AU VI