

# RESMED

## Swift™ FX Nano

## Swift™ FX Nano for Her

NASAL MASK

### User Guide

English



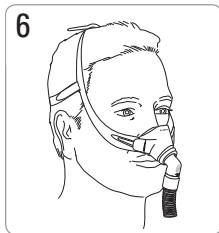
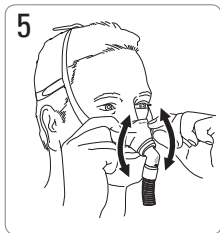
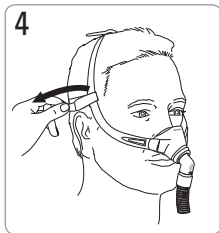
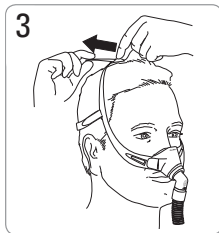
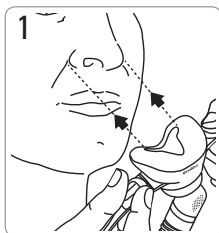
# RESMED

## Swift™ FX Nano

## Swift™ FX Nano for Her

NASAL MASK / NASENMASKE / MASQUE NASAL /  
MASCHERA NASALE

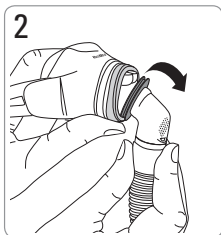
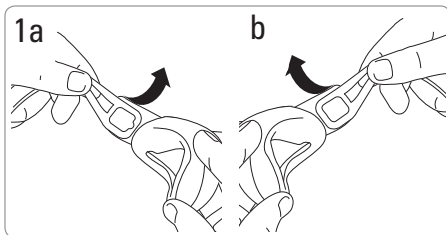
Fitting / Anlegen / Mise en place / Applicazione



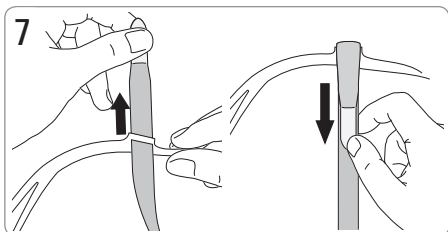
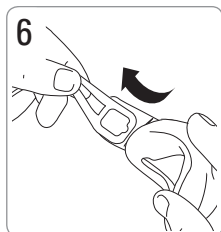
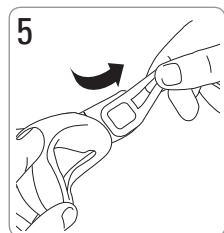
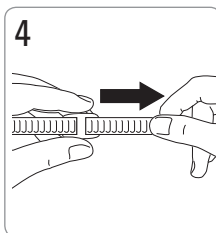
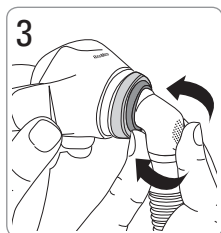
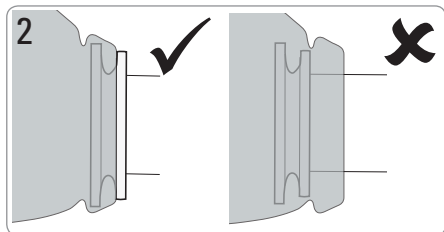
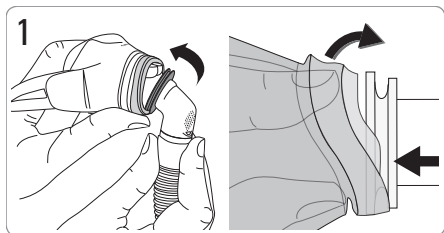
## Removal / Abnehmen / Retrait / Rimozione

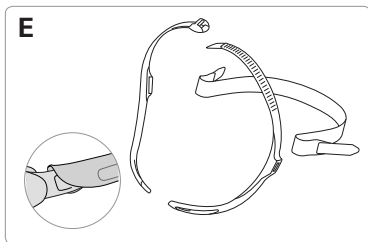
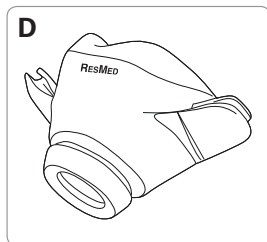
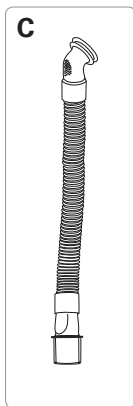
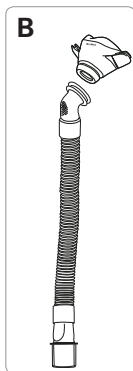
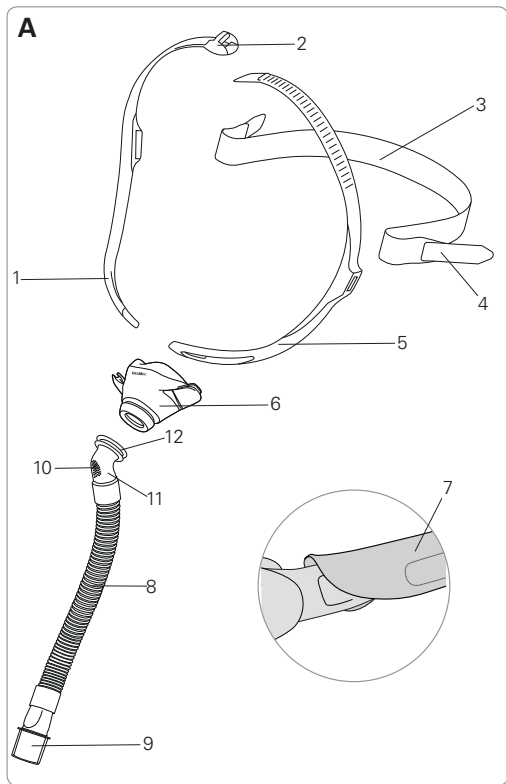


## Disassembly / Auseinanderbau / Démontage / Smontaggio



# Reassembly / Zusammenbau / Remontage / Riassemblaggio





# Mask components / Maskenkomponenten / Composants du masque / Componenti della maschera

Item / Artikel / Désignation / Componente	Description / Beschreibung / Description / Descrizione	Part number / Teilenummer / Code produit / Codice prodotto	
		Swift FX Nano	Swift FX Nano for Her
1	Headgear right / Kopfband rechts / Harnais droit / Copricapo (destra)		
2	Top buckle / Oberer Clip / Boucle supérieure / Fibbia superiore		
3	Back strap / Hinteres Band / Sangle arrière / Cinghia posteriore		
4	Back strap fastener / Verschluss des hinteren Bandes / Attache sangle arrière / Fermaglio della cinghia posteriore		
5	Headgear left / Kopfband links / Harnais gauche / Copricapo (sinistra)		
6	Mask cushion / Maskenkissen / Bulle du masque / Cuscinetto della maschera		
7	Soft wraps / Weiche Hüllen / Housses souples / Guaine imbottite	61530 (2 x G)	61544 (2 x P)
8	Short tube / Verbindungsschlauch / Tuyau court / Tubo corto		
9	Swivel / Drehadapter / Pièce pivotante / Giunto rotante		

Item / Artikel / Désignation / Componente	Description / Beschreibung / Description / Descrizione	Part number / Teilenummer / Code produit / Codice prodotto	
		Swift FX Nano	Swift FX Nano for Her
10	Vent / Luftauslassöffnung / Orifice de ventilation / Dispositivo di esalazione		
11	Elbow / Kniestück / Coude / Gomito		
12	Swivel ring / Drehadapterring / Anneau pivotant / Anello rotante		
A	Complete system / Komplettes System / Système complet / Maschera con tutti i componenti	62202 (Std) 62253 (W)	62203 (S)
B	Frame system / Maskenrahmensystem / Entourage complet / Telaio	62220 (Std) 62271 (W)	62221 (S)
C	Short tube assembly / Verbindungsschlauchsatz / Ensemble tuyau court / Gruppo circuito corto	62236 (1) 62237 (10)	62244 (1) 62245 (10)
D	Mask cushion / Maskenkissen / Bulle du masque / Cuscinetto della maschera	62230 (Std) 62281 (W)	62231 (S)
E	Headgear / Kopfband / Harnais / Copricapo	62238	62248

S: Small / Small / Petit / Small

Std: Standard / Standard / Standard / Standard

W: Wide / Wide / Large / Wide

G: Gray / Grau / Gris / Grigio

P: Pink / Pink / Rose / Rosa

# Swift™ FX Nano

## Swift™ FX Nano for Her

### NASAL MASK

Thank you for choosing the Swift FX Nano / Swift FX Nano for Her. Please read the entire manual before use.

### Intended Use

The Swift FX Nano / Swift FX Nano for Her channels airflow noninvasively to a patient from a continuous positive airway pressure (CPAP) or bilevel device.

The Swift FX Nano is:

- to be used by patients >30 kg for whom positive airway pressure has been prescribed
- intended for single-patient re-use in the home environment and multipatient re-use in the hospital/institutional environment.

### GENERAL WARNINGS

- The vent holes must be kept clear.
- The mask should only be used with CPAP or bilevel devices recommended by a physician or respiratory therapist.
- The mask should not be used unless the device is turned on. Once the mask is fitted, ensure the device is blowing air.

**Explanation:** CPAP and bilevel devices are intended to be used with special masks (or connectors) which have vent holes to allow continuous flow of air out of the mask. When the device is turned on and functioning properly, new air from the device flushes the exhaled air out through the mask vent holes. However, when the device is not operating, insufficient fresh air will be provided through the mask, and the exhaled air may be rebreathed. Rebreathing of exhaled air for longer than several minutes can, in some circumstances, lead to suffocation. This applies to most models of CPAP or bilevel devices.

- Follow all precautions when using supplemental oxygen.



- Oxygen flow must be turned off when the CPAP or bilevel device is not operating, so that unused oxygen does not accumulate within the device enclosure and create a risk of fire.
- Oxygen supports combustion. Oxygen must not be used while smoking or in the presence of an open flame. Only use oxygen in well ventilated rooms.
- At a fixed rate of supplemental oxygen flow, the inhaled oxygen concentration varies, depending on the pressure settings, patient breathing pattern, mask, point of application and leak rate. This warning applies to most types of CPAP or bilevel devices.
- The technical specifications of the mask are provided for your clinician to check that they are compatible with the CPAP or bilevel device. If used outside specification or if used with incompatible devices, the seal and comfort of the mask may not be effective, optimum therapy may not be achieved, and leak, or variation in the rate of leak, may affect the CPAP or bilevel device function.
- Discontinue using this mask if you have ANY adverse reaction to the use of the mask, and consult your physician or sleep therapist.
- Using a mask may cause tooth, gum or jaw soreness or aggravate an existing dental condition. If symptoms occur, consult your physician or dentist.
- As with all masks, some rebreathing may occur at low CPAP pressures.
- Refer to your CPAP or bilevel device manual for details on settings and operational information.
- Remove all packaging before using the mask.

## **Using your mask**

When using your mask with ResMed CPAP or bilevel devices that have mask setting options, refer to the Technical specifications section in this user guide for mask selection options.

For a full list of compatible devices for this mask, see the Mask/Device Compatibility List on [www.resmed.com](http://www.resmed.com) on the **Products** page under **Service & Support**. If you do not have internet access, please contact your ResMed representative.

## Fitting

The fitting illustrations in this user guide show the sequence for obtaining the best fit and comfort when using your mask. A diagram showing the names of parts can be found in the Mask Components diagram near the beginning of this guide.

### Fitting steps

1. Ensure that the bottom of the cushion opening is aligned with the bottom of your nose. Place the mask over your nose.
2. Pull the headgear over your head. The buckle on the top strap should sit on top of your head and the fabric back strap should go around the back of your head.
3. Adjust the top strap by pulling the strap through the buckle, one notch at a time. Do not overtighten. The mask should sit comfortably over your nose and the back strap should sit just above your ears.
4. Adjust the fasteners on the fabric back strap until the mask is comfortably sealed. The fabric back strap can be positioned over or under the hair.
5. Adjust the mask cushion until it sits comfortably on your nose.
6. Finally, connect the free end of the short tube assembly to the device air tubing. If the mask leaks, readjust the fabric back strap before the top strap.

### Removing your mask

To remove your mask pull the mask and headgear by the fabric back strap up and over your head.

## Disassembly

Refer to the disassembly illustrations in this user guide. A diagram showing the names of parts can be found in the Mask Components diagram near the beginning of this guide.

### Disassembly steps

1. Remove the headgear by slightly twisting each headgear arm and pulling away from the node on the mask cushion.
2. Peel the mask cushion away from the swivel ring.

**Note:** *The headgear straps are not intended to be disassembled and can be washed together.*

## Reassembly

Refer to the reassembly illustrations in this user guide. A diagram showing the names of parts can be found in the Mask Components diagram near the beginning of this guide.

### Reassembly steps

1. Using your forefinger and thumb to stretch the inside of the mask cushion, insert the swivel ring into the mask cushion.
2. Allow the mask cushion to sit in the groove on the swivel ring. The mask cushion is correctly positioned when it is located in the swivel ring groove with no gaps. Ensure that the swivel ring is not pushed all the way into the mask cushion.
3. Rotate the elbow to ensure it moves freely in the swivel ring.
4. Thread the top strap through the top buckle with the notches facing up.
5. Hold the headgear arm with the opening facing you. Latch the headgear arm onto the node on the mask cushion. Make sure that the text on the headgear lines up with the text on the mask cushion.
6. Repeat the previous step with the other headgear arm. Ensure that the headgear straps are not twisted.
7. Thread the fabric back strap through each side of the headgear, then fold over to secure. Ensure that the fastener is on the outside with the ResMed logo facing out.

## Cleaning your mask in your home

Your mask and headgear should only be handwashed by gently rubbing in warm (approximately 30°C) water using mild soap. All components should be rinsed well with drinking quality water and allowed to air dry out of direct sunlight.

### **WARNING**

Do not use aromatic-based solutions or scented oils (eg, eucalyptus or essential oils), bleach, alcohol or products that smell strongly (eg, citrus) to clean any of the mask components. Residual vapours from these solutions can be inhaled if not rinsed thoroughly. They may also damage the mask, causing cracks.

### **CAUTION**

- If any visible deterioration of a system component is apparent (cracking, crazing, tears etc), the component should be discarded and replaced.
- Avoid connecting flexible PVC products (eg, PVC tubing) directly to any part of the mask. Flexible PVC contains elements that can be detrimental to the materials of the mask, and may cause the components to crack or break.

### **Daily/After each use:**

- To optimize the mask seal, facial oils should be removed from the cushion after use.
- Handwash the separated mask components (excluding headgear).
- If the vent or rotating parts such as the swivel, swivel ring or ball joint require cleaning, use a soft bristle brush.

### **Weekly:**

- Handwash the headgear. It may be washed without being disassembled.

## Reprocessing the mask between patients

This mask should be reprocessed when used between patients. Cleaning, disinfection and sterilisation instructions are available from the ResMed website, [www.resmed.com/masks/sterilization](http://www.resmed.com/masks/sterilization). If you do not have internet access, please contact your ResMed representative.

## Troubleshooting

<b>Problem/possible cause</b>	<b>Solution</b>
-------------------------------	-----------------

<b>Mask is too noisy.</b>	
---------------------------	--

Vent is blocked or partially blocked.	If the vent requires cleaning, use a soft bristle brush.
---------------------------------------	--

Elbow inserted incorrectly.	Remove the elbow from the mask and then reassemble according to the instructions.
-----------------------------	---

Ensure that the swivel ring on the elbow has not been inserted too far into the cushion.

Mask is leaking.	Refit or reposition your mask.
------------------	--------------------------------

Readjust the back strap to bring the mask closer to the face and improve your seal.

Check that your mask is assembled correctly.

<b>Problem/possible cause</b>	<b>Solution</b>
-------------------------------	-----------------

<b>Mask leaks around face.</b>	
--------------------------------	--

Mask is not positioned correctly.

Check that the ResMed logo is facing upward on the top of the cushion across the bridge of your nose.

Mask may have been fitted incorrectly.

Pull the mask away from your face and reposition, ensuring that the lower corners of the mask fully enclose your nose. If necessary, readjust the top strap to keep the mask in the right place.

Cushion membrane is creased or folded.

Remove and refit your mask according to the fitting instructions. Ensure you position the cushion correctly over your nose before pulling the headgear over your head. Do not slide the mask down your face during fitting as this may lead to folding or curling of the cushion.

Mask is not tightened correctly.

Ensure that the headgear straps are not overtightened or loose.

Readjust the back strap to bring the mask closer to the face and improve your seal.

Check that the headgear is not twisted.

Mask may be the wrong size.

Talk to your clinician.

<b>Mask does not fit properly.</b>	
------------------------------------	--

Mask is incorrectly assembled.

Disassemble the mask, then reassemble according to the instructions. Ensure that the swivel ring on the elbow has not been inserted too far into the cushion. Check that the printing on the left headgear strap (Swift FX) aligns to the printing on the cushion arm (Nano).

Mask may be the wrong size.

Talk to your clinician.

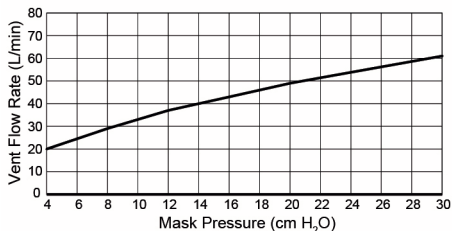
Cushion may be dirty.

Clean cushion according to the instructions.

# Technical Specifications

## Pressure-flow curve

The mask contains passive venting to protect against rebreathing. As a result of manufacturing variations, the vent flow rate may vary.



Pressure (cm H <sub>2</sub> O)	Flow (L/min)
4	20
8	29
12	37
16	43
20	49
22.5	52
30	61

## Dead space information

Physical dead space is the empty volume of the mask to the end of the swivel. Using the wide cushions it is 125 mL.

## Therapy pressure

4 to 30 cm H<sub>2</sub>O

## Resistance

Drop in pressure measured (nominal)  
at 50 L/min: 0.5 cm H<sub>2</sub>O  
at 100 L/min: 2.0 cm H<sub>2</sub>O

## Environmental conditions

Operating temperature: +5°C to +40°C  
Operating humidity: 15% to 95% relative humidity non-condensing  
Storage and transport temperature: -20°C to +60°C  
Storage and transport humidity: up to 95% relative humidity non-condensing

## Sound

DECLARED DUAL-NUMBER NOISE EMISSION VALUES in accordance with ISO 4871. The A-weighted sound power level of the mask is 25 dBA, with uncertainty of 3 dBA. The A-weighted sound pressure level of the mask at a distance of 1 m is 17 dBA, with uncertainty of 3 dBA.

## Gross dimensions

### Small:

430 mm (H) x 100 mm (W) x 75 mm (D)

### Standard:

430 mm (H) x 104 mm (W) x 75 mm (D)

### Wide:

430 mm (H) x 114 mm (W) x 75 mm (D)

Mask fully assembled with short tube assembly (no headgear)

---

**Mask setting options****For S9:** Select 'Pillows'**For other devices:** Select 'SWIFT' (if available), otherwise select 'MIRAGE' as the mask option.

---

**Notes:**

- *The mask system does not contain BPA, PVC, DEHP or phthalates.*
- *This product is not made with natural rubber latex.*
- *The manufacturer reserves the right to change these specifications without notice.*

**Storage**

Ensure that the mask is thoroughly clean and dry before storing it for any length of time. Store the mask in a dry place out of direct sunlight.

**Disposal**

This mask does not contain any hazardous substances and may be disposed of with your normal household refuse.



## Symbols

---



Catalog number



Batch code

---



Humidity limitation



Temperature limitation

---



Fragile, handle with care



Not made with natural rubber latex

---



Manufacturer



European Authorized Representative

---



Keep away from rain



This way up

---



Indicates a Warning or Caution and alerts you to a possible injury or explains special measures for the safe and effective use of the device

---



Caution, consult accompanying documents.

---

## Consumer Warranty

ResMed acknowledges all consumer rights granted under the EU Directive 1999/44/EC and the respective national laws within the EU for products sold within the European Union.



**Manufacturer:**

ResMed Ltd 1 Elizabeth Macarthur Drive Bella Vista NSW 2153 Australia

See [www.resmed.com](http://www.resmed.com) for other ResMed locations worldwide.

For patent information, see [www.resmed.com/ip](http://www.resmed.com/ip)

Swift is a trademark of ResMed Ltd and is registered in U.S. Patent and Trademark Office. Velcro is a trademark of Velcro Industries B.V.



**Swift™ FX Nano for Her**  
NASAL MASK



628035/4 2018-03

Swift FX Nano /  
Swift FX Nano for Her

USER

EUR 1 - ENG



628035

**Swift™ FX Nano**  
NASAL MASK