

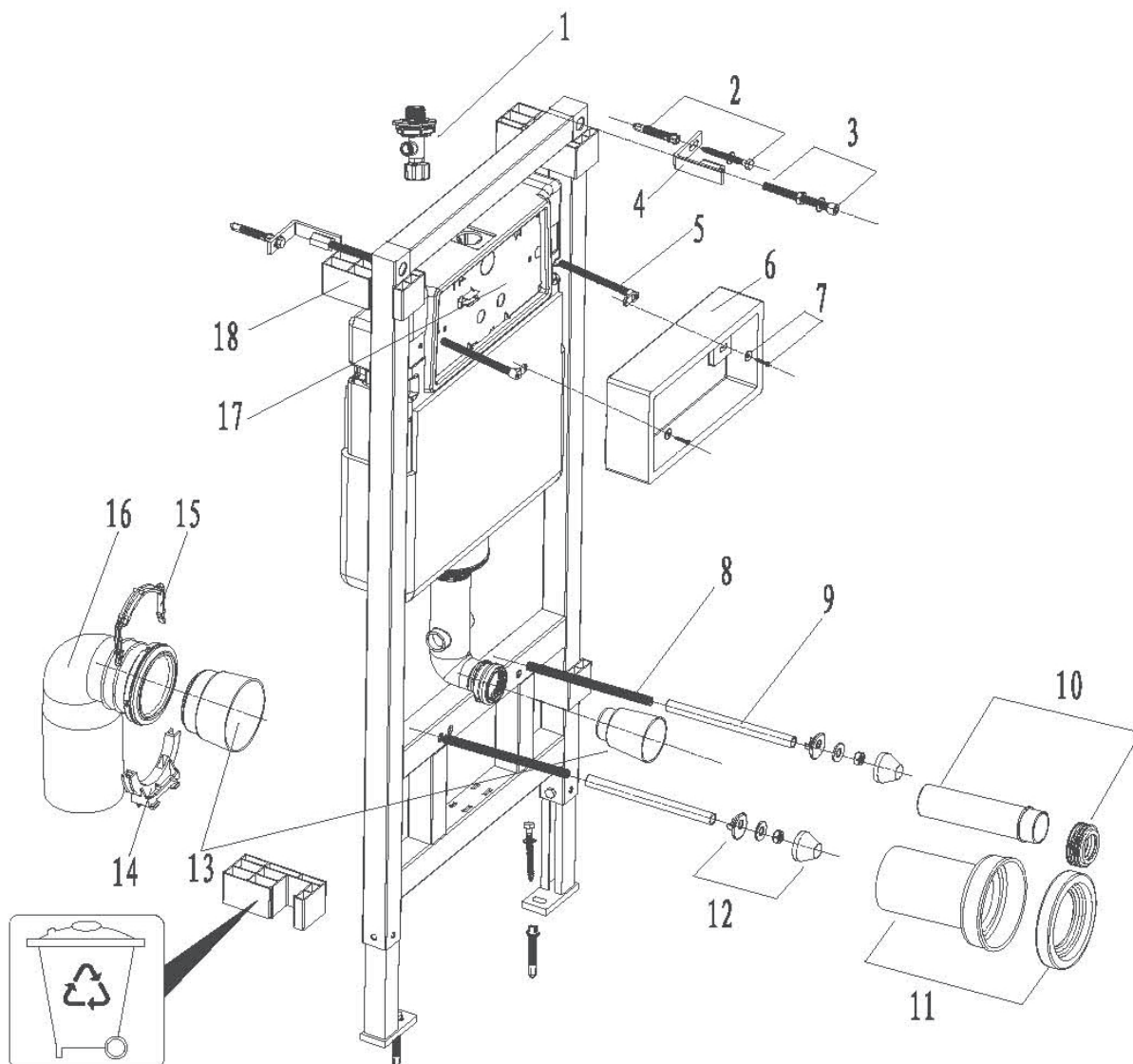
Agua

TIMON

Wall mounted, elongated, dual-flush toilet



SPECIFICATIONS



List of main installation accessories

NO.	Description	Qty	Function
1	Angle valve	1	Fill valve inlet and shut-off
2	Expansion screw	4	Mounting of frame and wall bracket
3	Socket head screw	2	Mounting of frame and locking into wall bracket
4	Wall bracket	2	Fixation of frame
5	Fixing rod	2	To fix accessory box and actuator plate
6	Accessory box	1	To reserve space for installation of actuator at wall building
7	Self-tapping bolt	2	To fix accessory box
8	Connecting screw	2	To mount ceramic bowl
9	Protective cover	2	To protect connecting screw at wall building
10	Straight tube	1	To joint cistern into ceramic bowl
11	Connecting pipe	1	(cutting in accordance with wall thickness)
12	Ceramic bowl fixing accessories	2	To mount ceramic bowl
13	Piping stopper	2	To reserve space for straight tube and connecting pipe
14	Draining syphon holder	1	To mount draining syphon
15	Mounting bracket	1	
16	Draining syphon	1	To discharge liquid and solid waste from ceramic bowl.
17	Cistern cover	1	Mounting of locking bracket
18	Protective piece	4	To protect frame in transit

INSTALLATION

Important instruction:

1. Please adhere to the following installation instructions. We shall not be responsible for failures and loss that are contributed to improper installation.
2. Please confirm the fixation location of cistern prior to installation and obtain the finished floor surface. Draw FFL on installation wall and follow it as baseline from ZERO (0) level.
3. The instructions have been composed based in the latest product specifications. We reserve the right to make modifications to the packaging and specifications without providing prior notification.

NOTES:

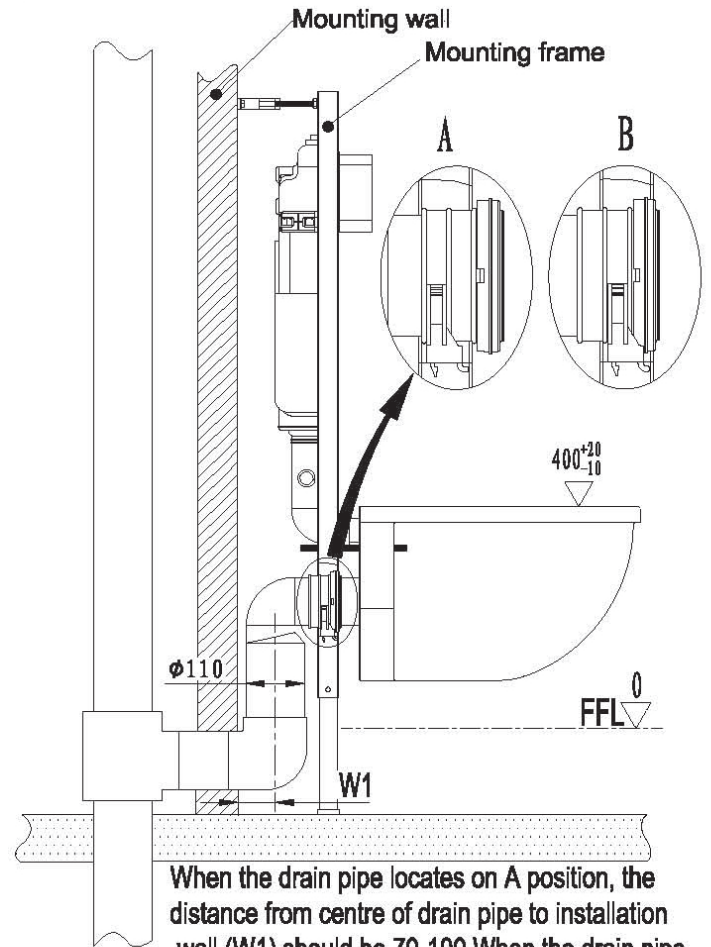
1. Mount before bricks building.
2. All size unit in MM.
3. Follow the material product, should there is an unconformity with drawing.

! FFL ∇ = FINISHED FLOOR

1. Drainage System Layout

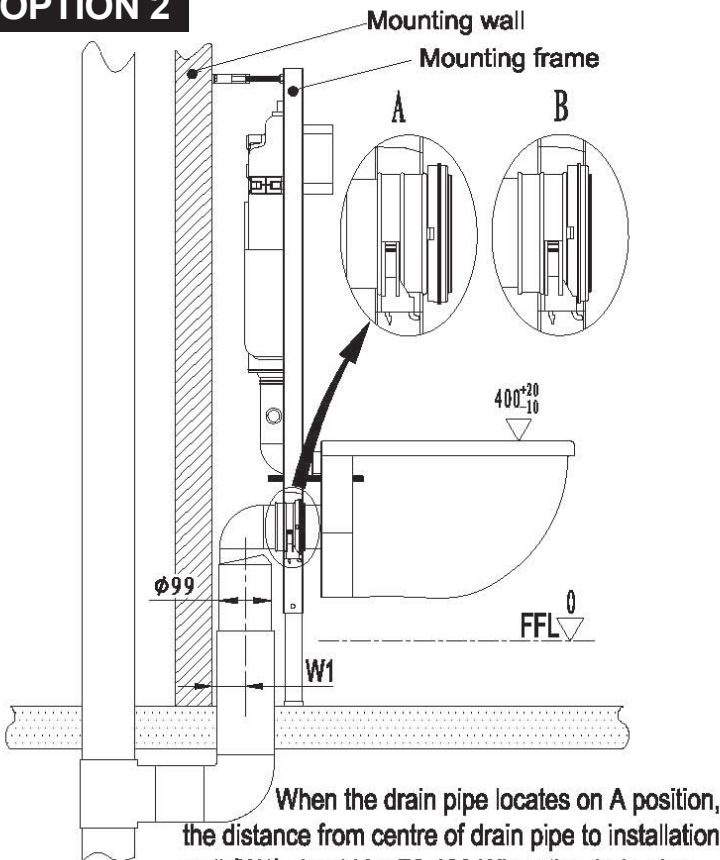
Drawing 1 to 3 are three different installation systems for drain pipe. Customer should confirm whichever installation system according to drainage outlet position. If drainage outlet does not fall within the three systems, customer should follow one of three drainage system layout to correspond installation of our concealed cistern.

OPTION 1



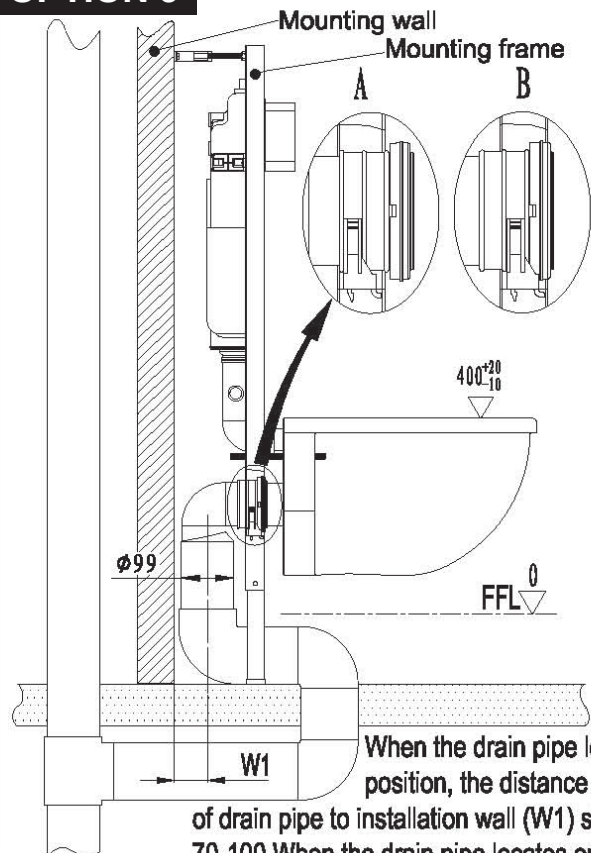
When the drain pipe locates on A position, the distance from centre of drain pipe to installation wall (W1) should be 70-100. When the drain pipe locates on B position, the distance from centre of drain pipe to installation wall (W1) should be 70-80.

OPTION 2



When the drain pipe locates on A position, the distance from centre of drain pipe to installation wall (W1) should be 70-100. When the drain pipe locates on B position, the distance from centre of drain pipe to installation wall (W1) should be 70-80.

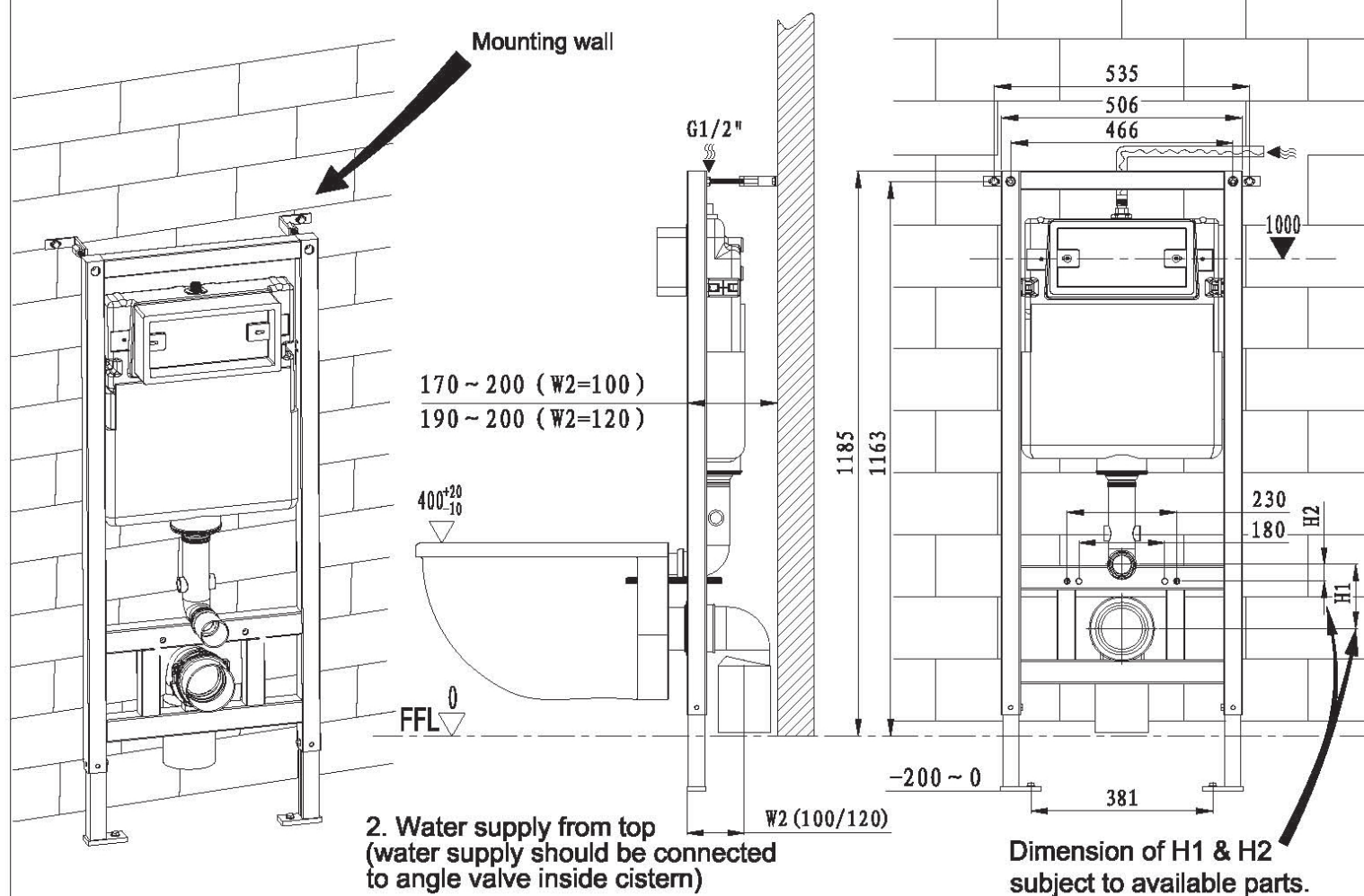
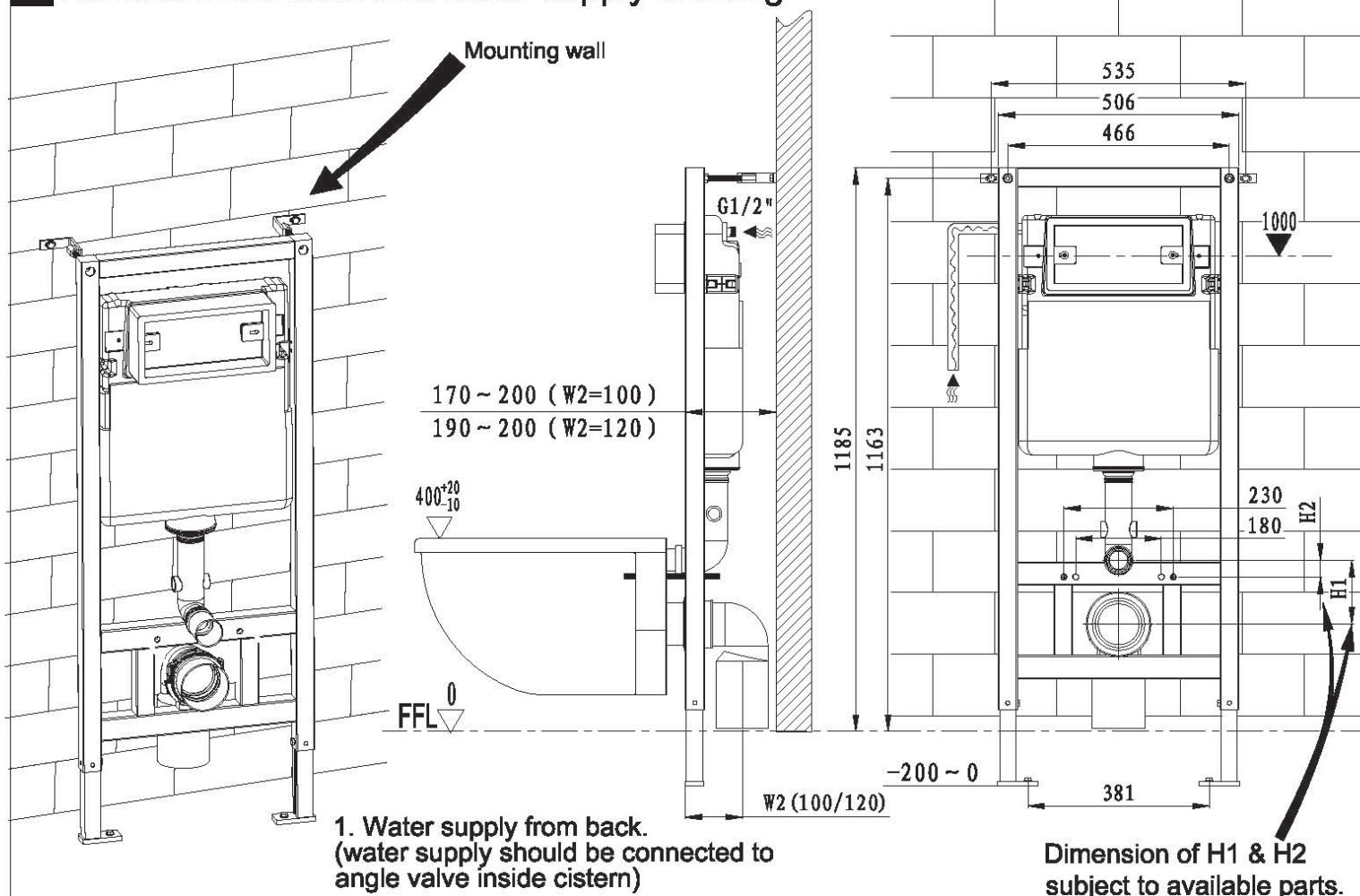
OPTION 3



When the drain pipe locates on A position, the distance from centre of drain pipe to installation wall (W1) should be 70-100. When the drain pipe locates on B position, the distance from centre of drain pipe to installation wall (W1) should be 70-80.

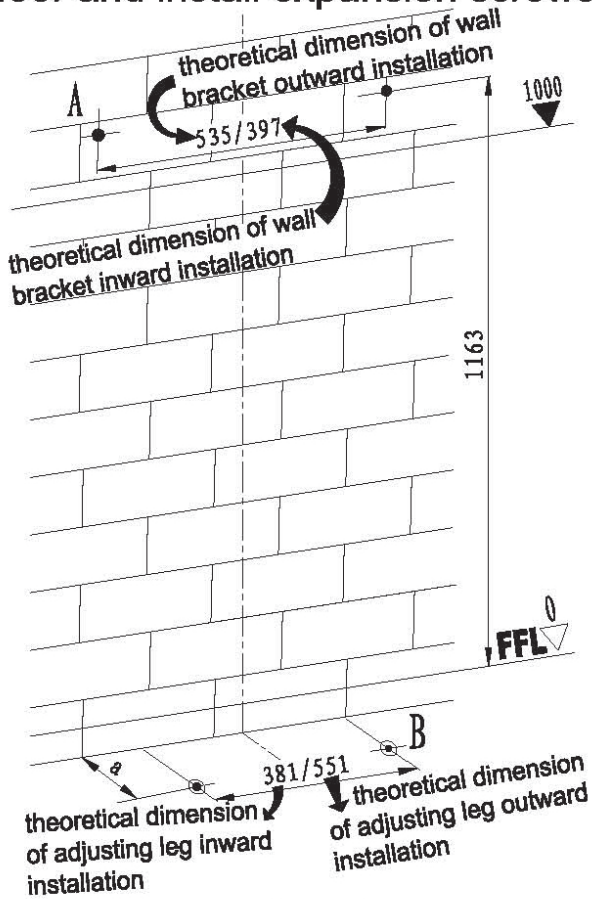
INSTALLATION

2 General dimension and water supply drawing



INSTALLATION

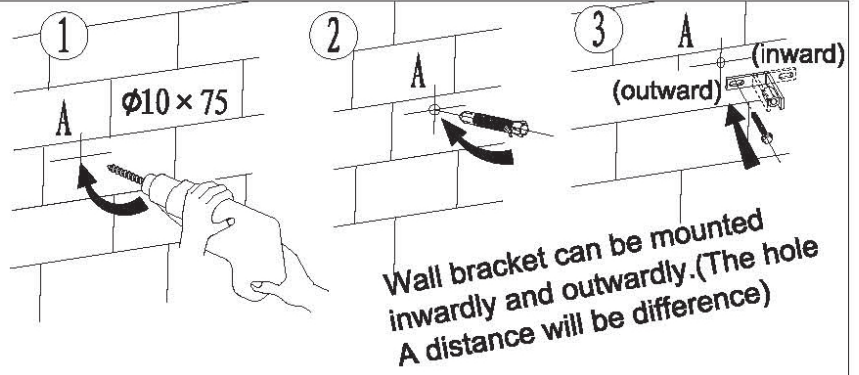
3 Drill holes on mounting wall and floor and install expansion screws



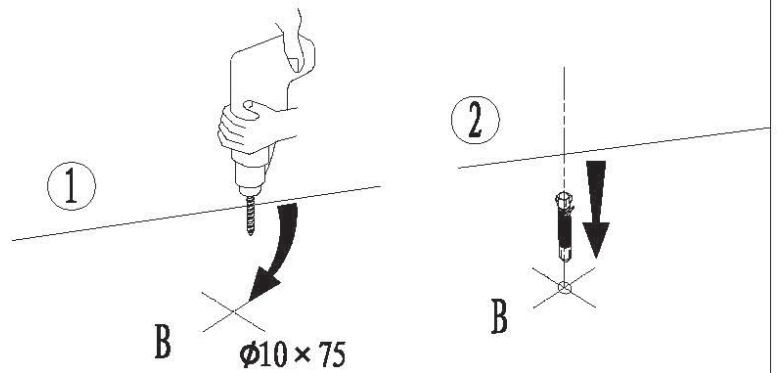
A dimension according to practical location of flushing pipe

☆Note: Above drilling are theoretical dimensions of frame mounting.

Please follow by the practical location of frame.

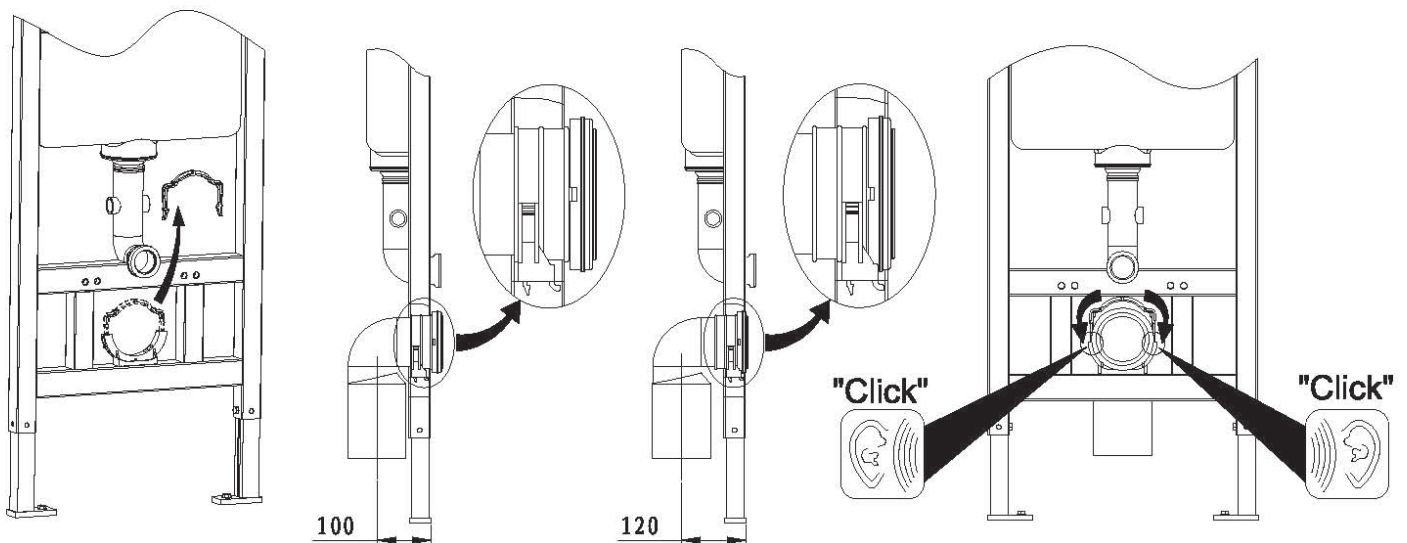


Drill a hole of $\phi 10 \times 75$ → insert expansion screw → fix the wall bracket into wall



Drill a hole of $\phi 10 \times 75$ → insert expansion screw

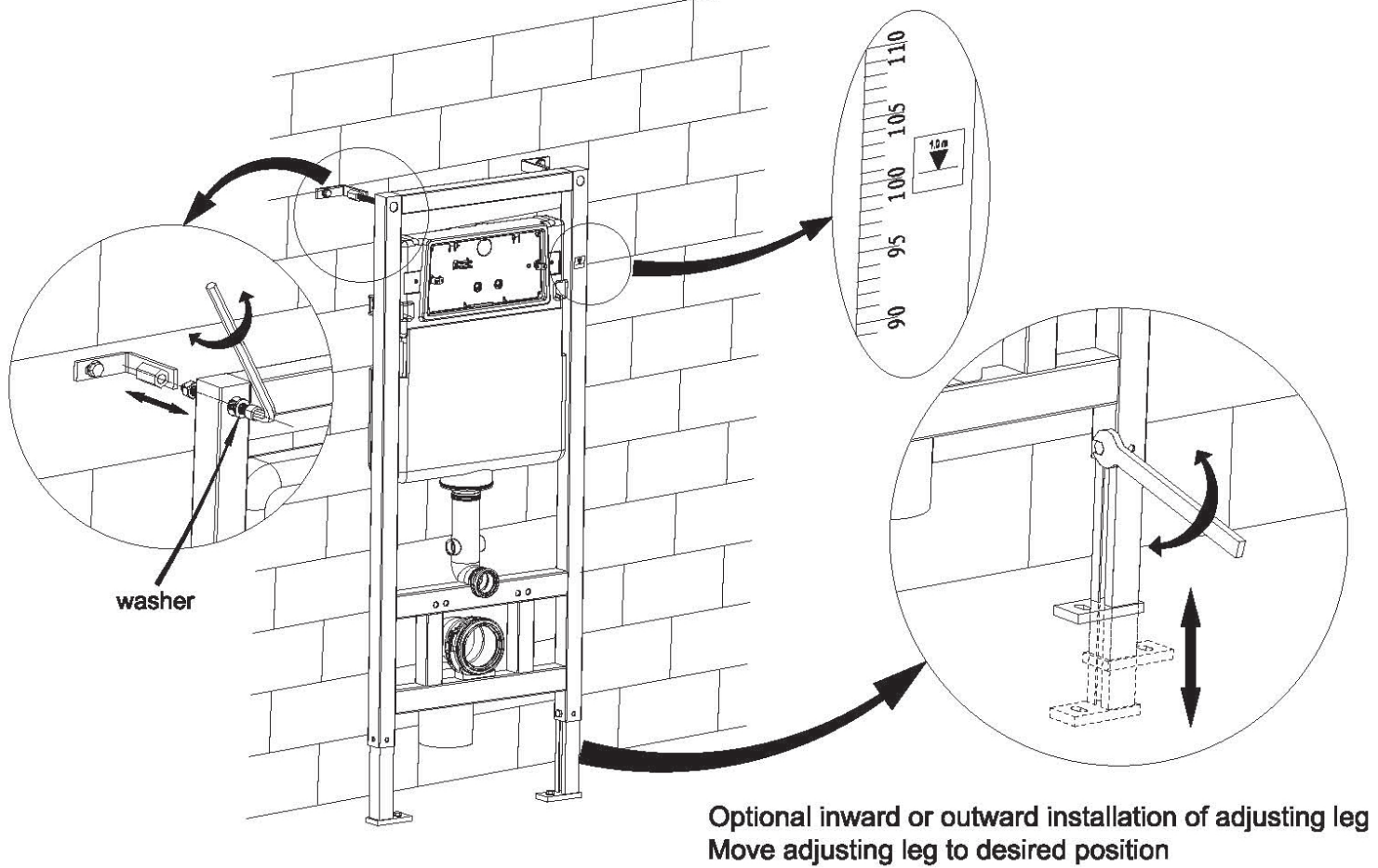
4 Installation of draining syphon



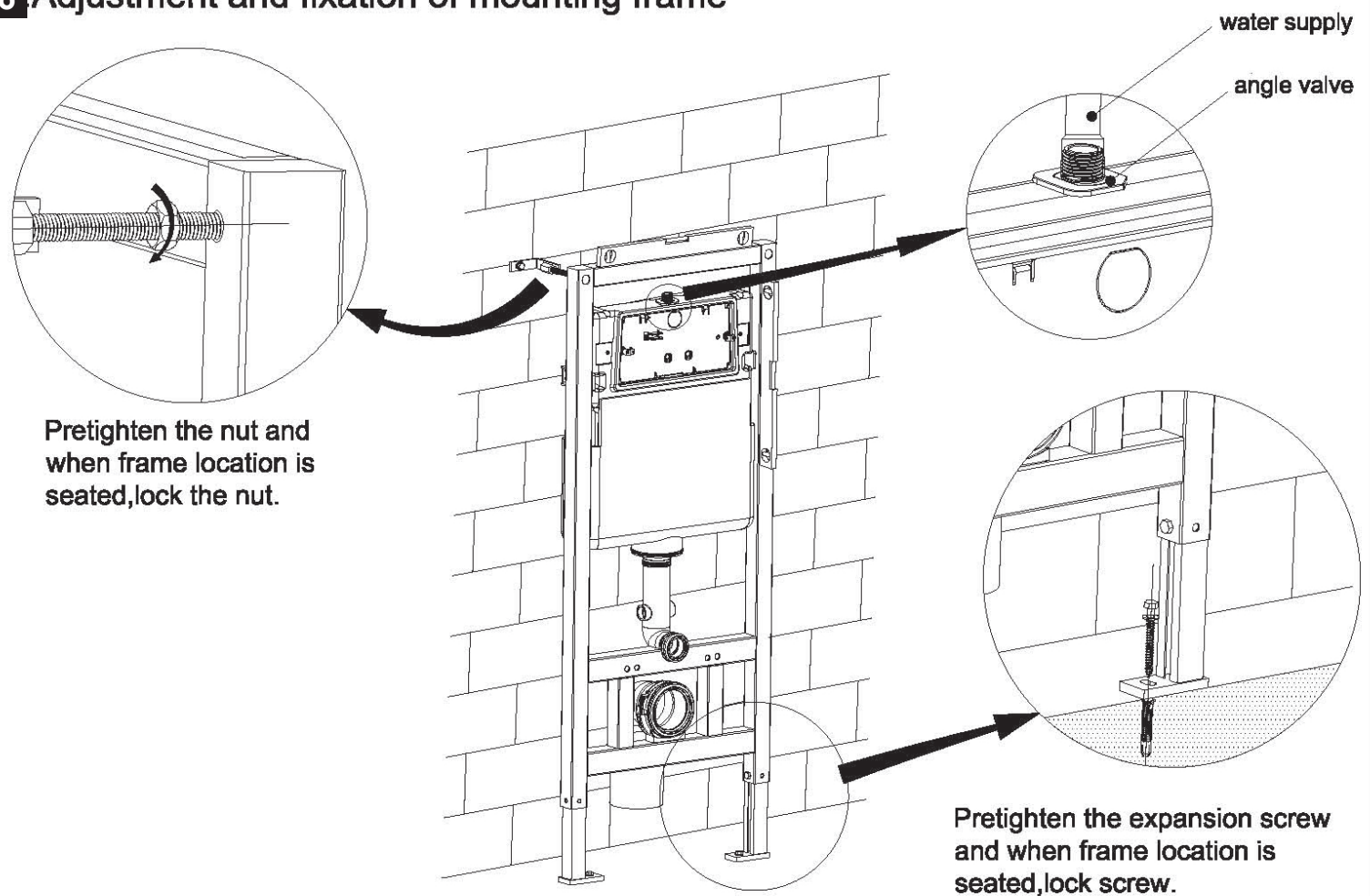
Remove the mounting bracket → Mount draining syphon (optional installation distance of 100 or 120) → Fasten the mounting bracket

INSTALLATION

5 Adjustment of socket head screw and floor fixing accessories

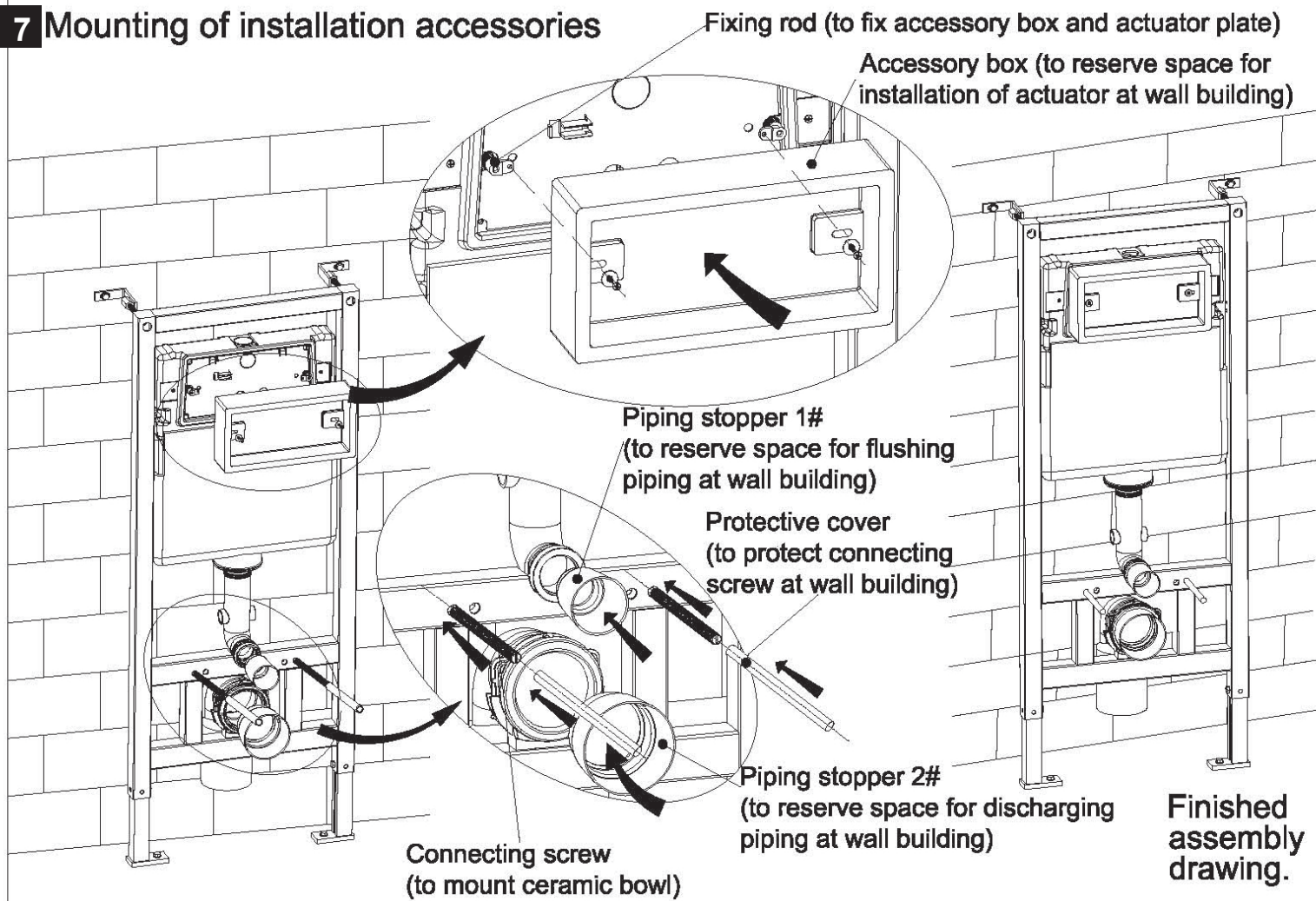


6 Adjustment and fixation of mounting frame

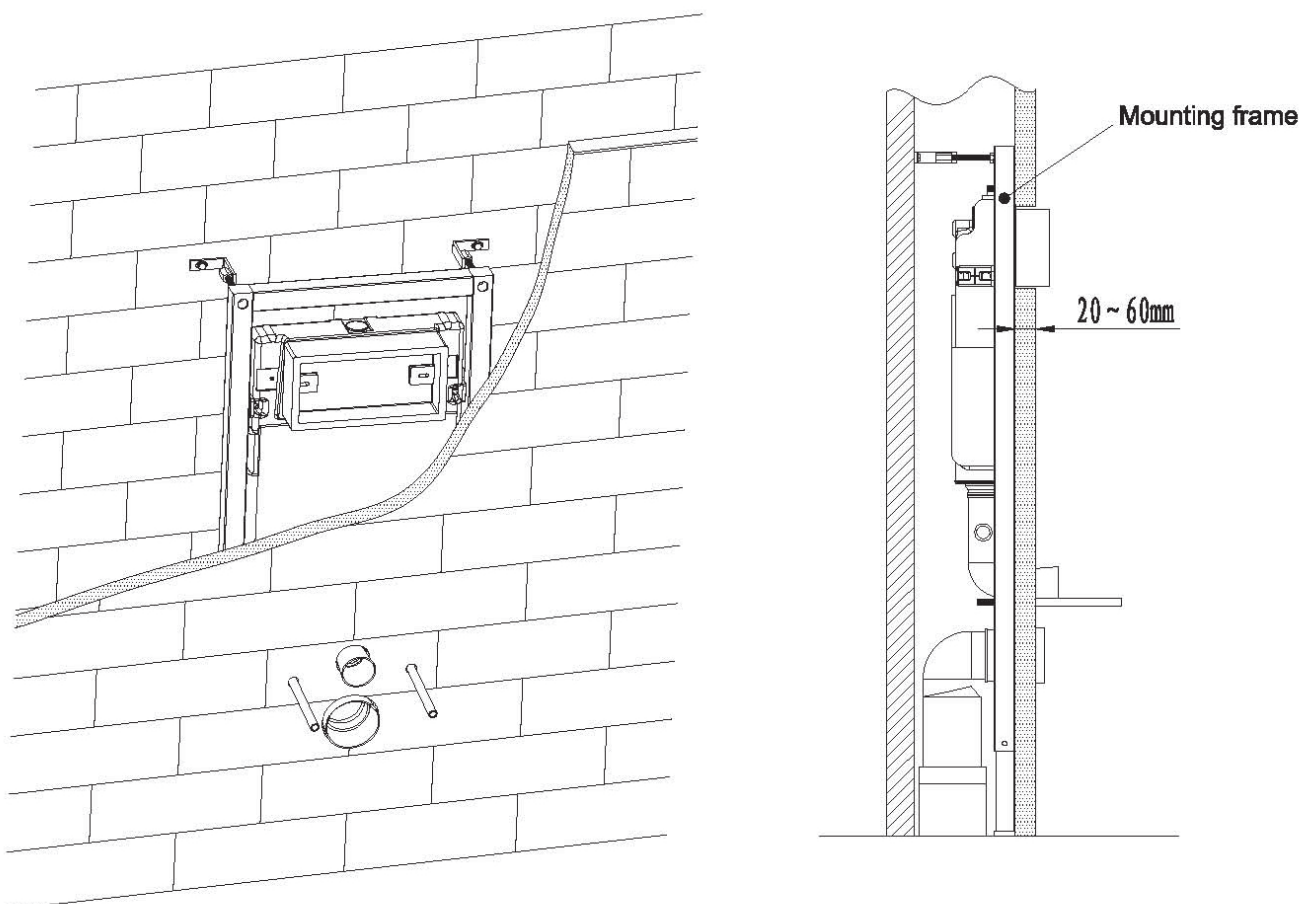


INSTALLATION

7 Mounting of installation accessories

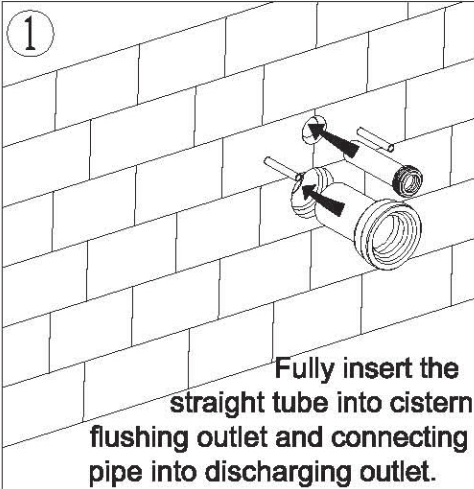
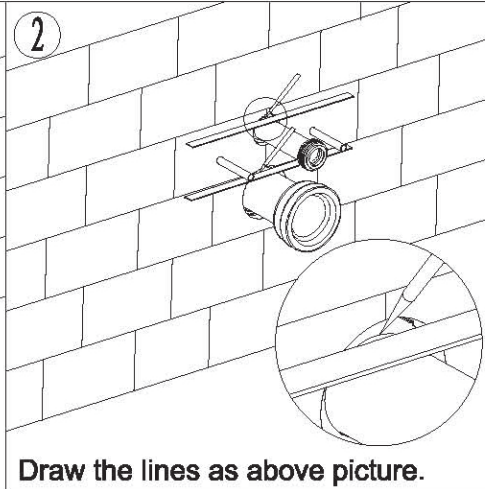
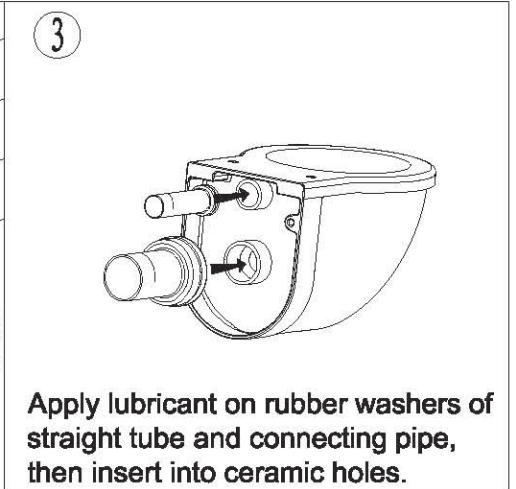
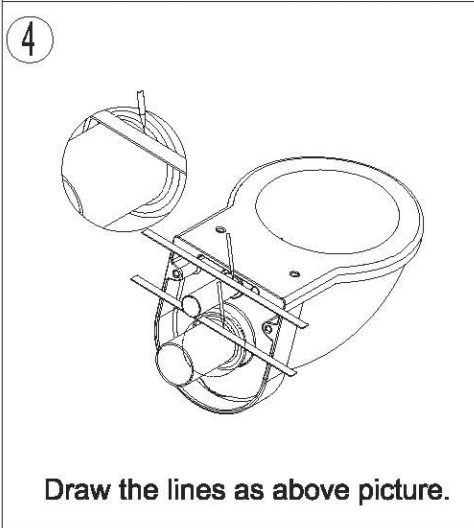
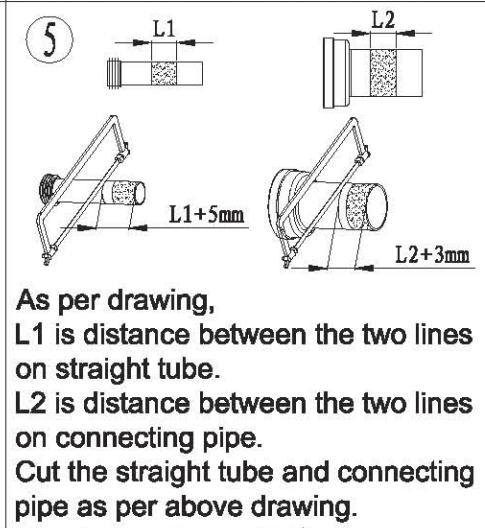
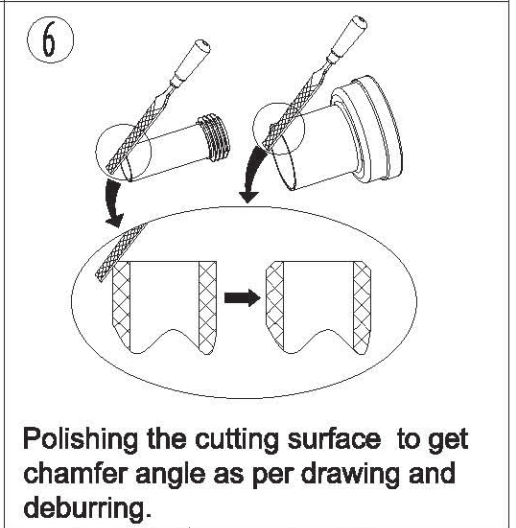
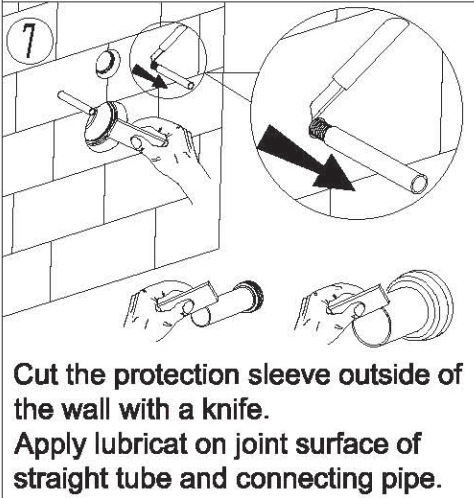
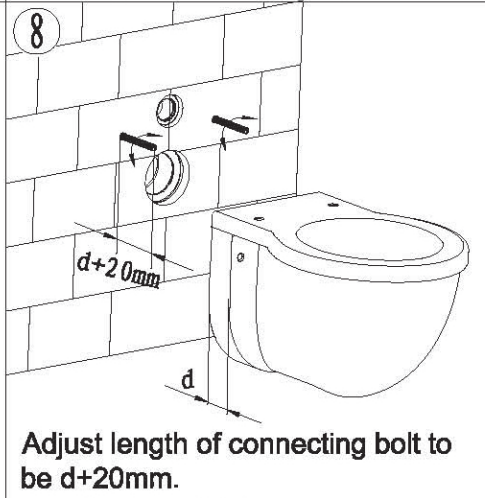
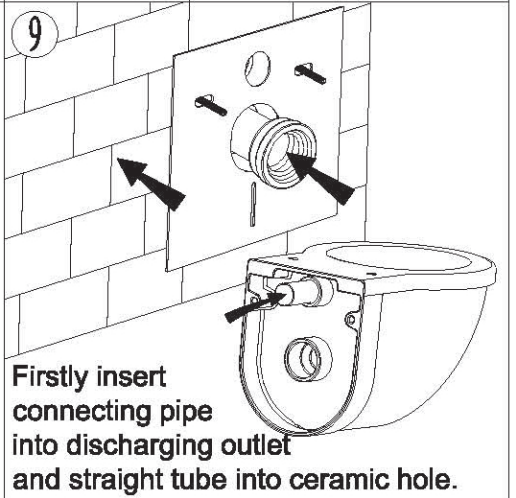

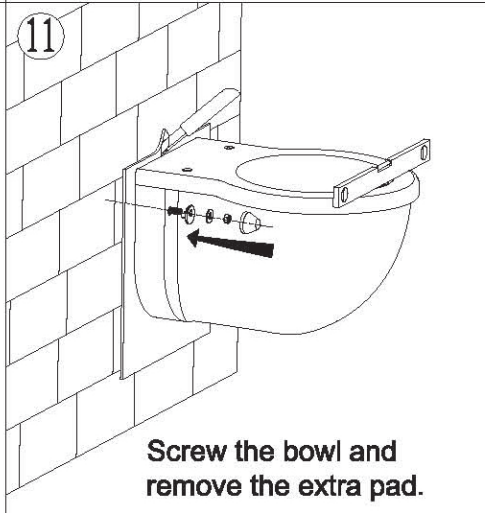
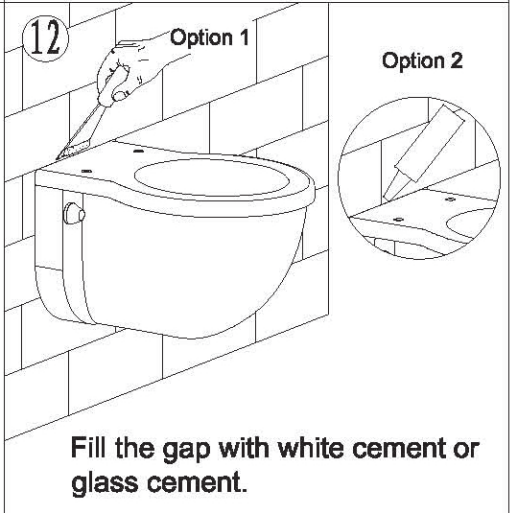


8 Wall thickness range 20~60mm (from frame outside surface to finished wall)



INSTALLATION

9 Mounting of ceramic bowl

<p>①</p>  <p>Fully insert the straight tube into cistern flushing outlet and connecting pipe into discharging outlet.</p>	<p>②</p>  <p>Draw the lines as above picture.</p>	<p>③</p>  <p>Apply lubricant on rubber washers of straight tube and connecting pipe, then insert into ceramic holes.</p>
<p>④</p>  <p>Draw the lines as above picture.</p>	<p>⑤</p>  <p>As per drawing, L1 is distance between the two lines on straight tube. L2 is distance between the two lines on connecting pipe. Cut the straight tube and connecting pipe as per above drawing.</p>	<p>⑥</p>  <p>Polishing the cutting surface to get chamfer angle as per drawing and deburring.</p>
<p>⑦</p>  <p>Cut the protection sleeve outside of the wall with a knife. Apply lubricant on joint surface of straight tube and connecting pipe.</p>	<p>⑧</p>  <p>Adjust length of connecting bolt to be $d+20\text{mm}$.</p>	<p>⑨</p>  <p>Firstly insert connecting pipe into discharging outlet and straight tube into ceramic hole.</p>
<p>⑩</p>  <p>Mounting the ceramic bowl.</p>	<p>⑪</p>  <p>Screw the bowl and remove the extra pad.</p>	<p>⑫</p>  <p>Fill the gap with white cement or glass cement.</p>

WARRANTY

ENGLISH

Agua Canada warrants all its products against material or workmanship defects under normal conditions of use and maintenance. The warranty period may vary depending on the type of product.

Agua Canada will, at its discretion, repair or replace parts or products that are found defective for the normal home use for which they were designed.

Agua Canada is not responsible in any way for costs related to labour or any other costs related to a product's installation, repair or replacement, nor for any damage, incident, expense, or direct or indirect loss.

TOILET

Guaranteed for a period of five (5) years against manufacturing defects.

TOILET SEAT

Guaranteed for a duration of one (1) year against manufacturing defects.

Siege social / Head office

2732 Étienne Lenoir, Laval
Québec, H7R 0A3, Canada

SERVICE@AGUACANADA.COM



aguacanada.com

833 689-2482