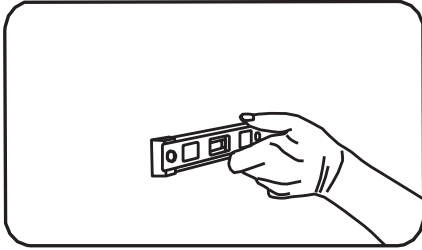


INSTALLATION MANUAL

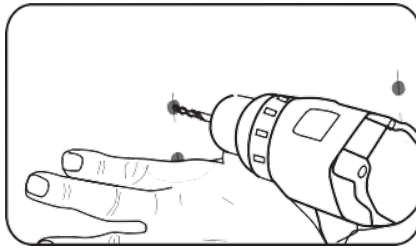
BATHROOM ACCESSORIES

1



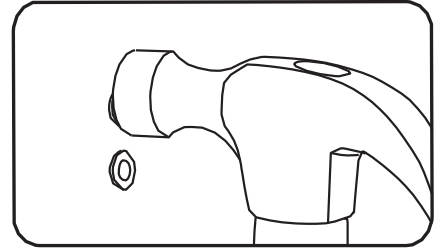
Determine where you'd like to mount it and mark with pencil. Ensure the marked place is straight.

2



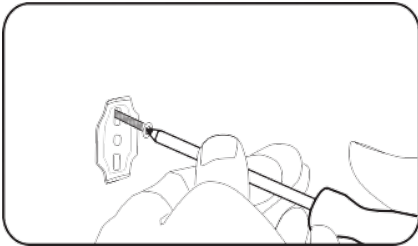
Using a drill and 1/4" (6.35 mm) drill bit, drill two vertical holes for each.

3



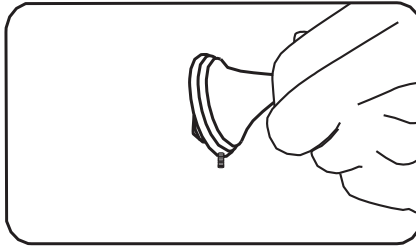
Insert plastic anchors into drilled holes. Lightly tap with hammer until flush with wall.

4



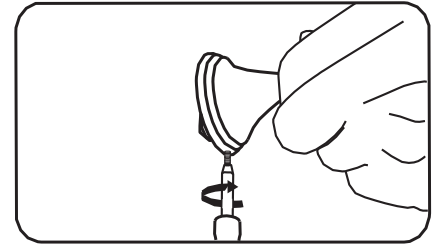
Position the mounting brackets against anchor holes and thread screws until secure.

5



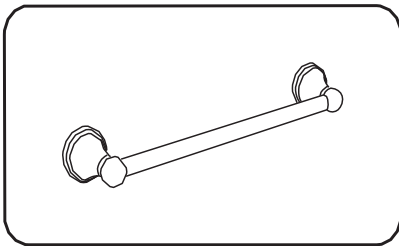
Using screwdriver to loosen screw until fixture is able to rest flush over mounting bracket.

6



Place fully-assembled fixture overtop the mounting bracket. Using screwdriver again to tighten the fixture onto the mounting bracket.

7



Make sure the fixture is secured to the wall by gently moving both posts from side to side.