



Wipe Clean Dog Cabin Installation Guide

Please note: - these instructions are applicable to wipe clean dog cabins of all sizes . Always remember to lay out all parts prior to assembly.

Step 1

To start with we will be needing the aluminium upright which has a letter A on the Top. We will also need the front piece which will also be marked A in one corner. These will be fastened together using the screws pictured below, once screwed together it should look like the picture below.



Step 2

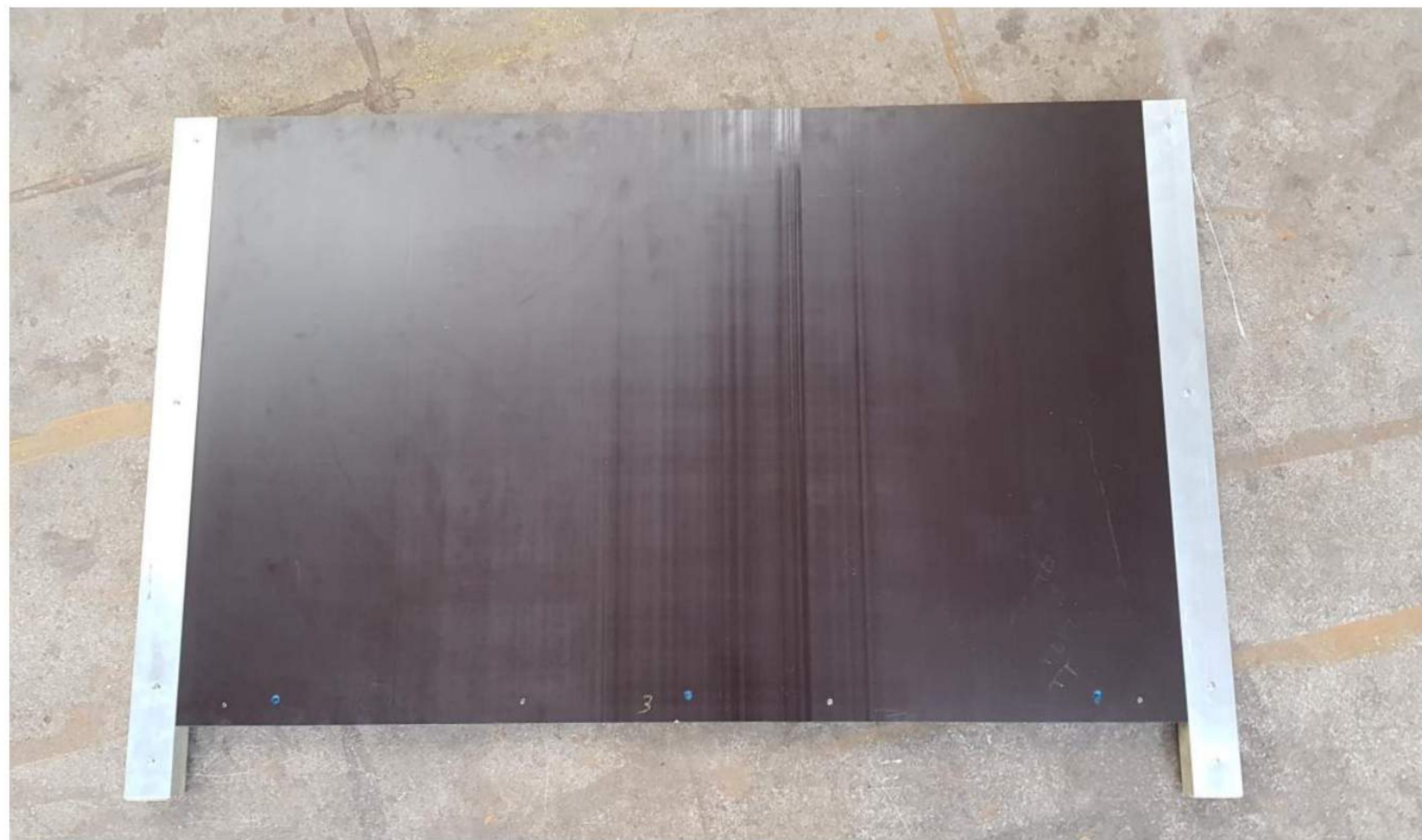
Now we can Add the second aluminium upright to the front section Marked with a letter B as pictured below, again secure these pieces together with the small dome head screws shown in step 1



Step 3

We can now do the same as above to the back section. These will be marked with letters E and F as pictured.

You can see how it should look below.



Step 4

Now that the front and rear panels are complete we can now add the first side panel. The first side panel is marked with the letters C and D as pictured. Match the letters with the aluminium uprights secured to the front panel, then to the rear panel.



Once secured you should now have a box coming together which looks like the picture to the left.

Step 5

Now it is time to add the floor before we complete the last side. It is easier to add this now rather than when the cabin is complete. When installing the floor, make sure that the smooth (none screw side) is pointing up. The floor is also marked with the edge of the door as pictured below.



Step 6

Once the floor is in place we can now add the last side panel, this will be marked up with the letters H and G. This panel can be placed nicely between the last 2 aluminium uprights.

When sliding the panel in, please make sure that it sits all the way to the bottom and that the tops are flush on each side, As pictured below.

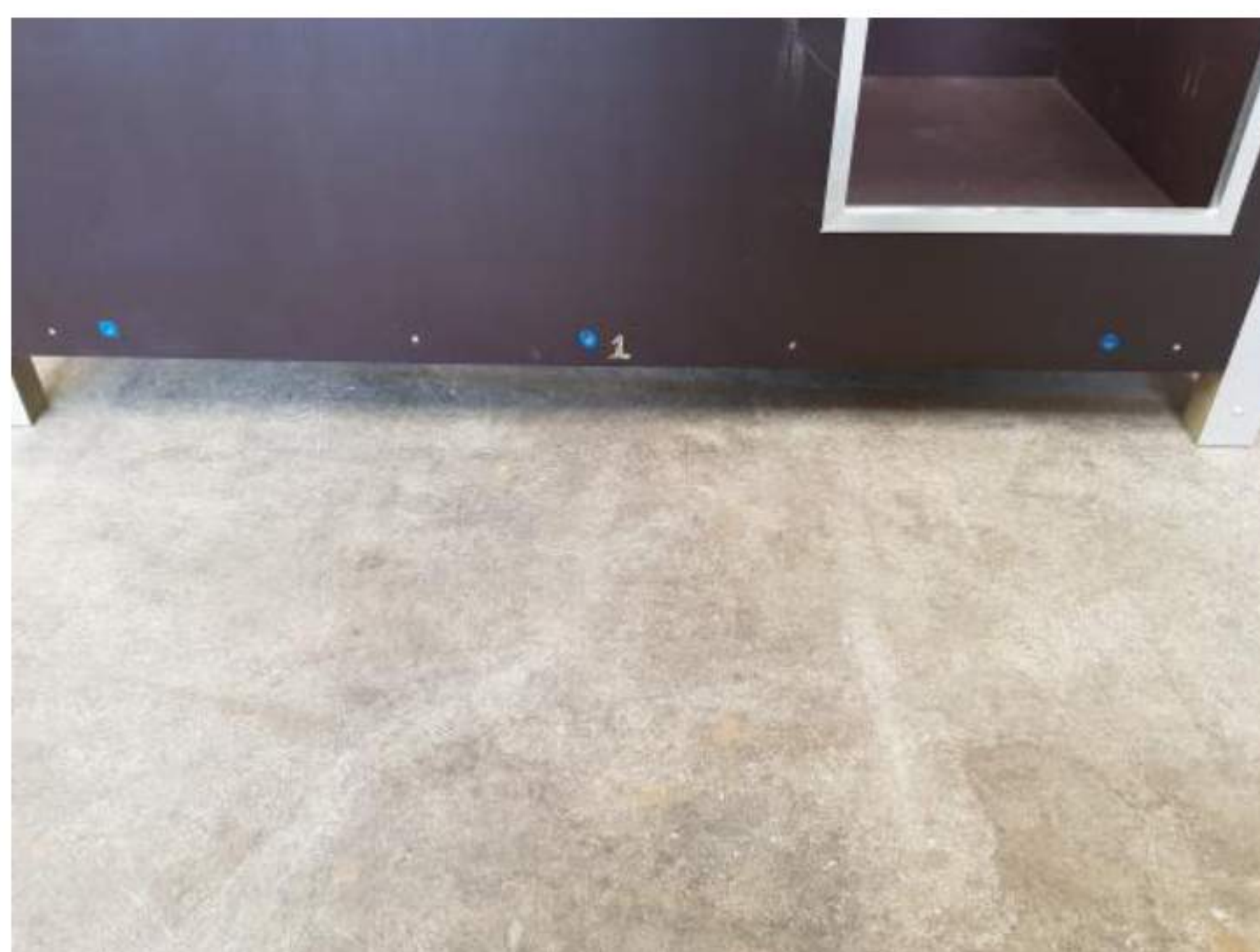


Step 7

Once you have all 4 sides secured together like the image above we can now secure the base. To do this we will be using the countersunk screws pictured.



These are to go all the way round the cabin on each side. The holes are countersunk into the front back and side pieces and have been marked in blue to show there location, as pictured below



Once screwed in your cabin should look like the image below



Repeat this step working your way around the cabin until all 4 sides have been secured.



Step 8

Once you have secured the base you can now add the bottom trims. These again are all marked up with numbers 1 to 4 on both the aluminium trims and on the cabin.

Match each number and then secure the trims to the cabin with the small dome head screws used earlier when securing the uprights to the cabin, as pictured.



See next page..



Your cabin should now look like the image below. The last thing to do is place the roof on top and it is ready for your beloved dog.



The roof is easy to lift on and off to gain access for cleaning

