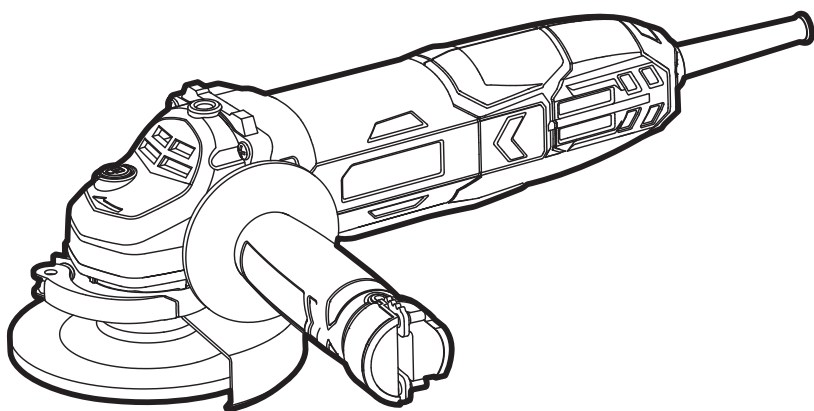


HAMMERHEAD™



6.0 AMP ANGLE GRINDER

MODEL HAAG060



ATTACH YOUR RECEIPT HERE

Serial Number _____ Purchase Date _____



Questions, problems, missing parts? Before returning to your retailer, call our customer service department at 1-877-888-1880, 8:30 a.m. – 8:00 p.m. EST (Monday – Friday) & 10:00 a.m. – 6:00 p.m. EST (Saturday and Sunday).

TABLE OF CONTENTS

Product Specifications	3
Safety Information	3
Preparation.	10
Package Contents.	11
Operating Instructions	12
Care and Maintenance	16
Extension Cords	17
Troubleshooting	18
Warranty.	19

WARNING

- Some dust created by power sanding, sawing, grinding, drilling and other construction activities contains chemicals known to the State of California to cause cancer, birth defects or other reproductive harm. Some examples of these chemicals are:
 - Lead from lead-based paints.
 - Crystalline silica from bricks, cement, and other masonry products.
 - Arsenic and chromium from chemically-treated lumber.
- Your risk from these exposures varies, depending upon how often you do this type of work. To reduce your exposure to these chemicals:
 - Work in a well-ventilated area.
 - Work with approved safety equipment, such as dust masks that are specially designed to filter out microscopic particles.
 - Avoid prolonged contact with dust from power sanding, sawing, grinding, drilling, and other construction activities. Wear protective clothing and wash exposed areas with soap and water. Allowing dust to get into your mouth or eyes or to lie on the skin may promote absorption of harmful chemicals.

SAFETY INFORMATION

PRODUCT SPECIFICATIONS

COMPONENT	SPECIFICATIONS
Power Input	120V~, 60Hz, 6.0A
Rated Speed (n)	12000/min
Wheel Diameter	4-1/2"
Wheel Thickness	1/4"
Wheel Type	For grinding: Type 27
Spindle Size	5/8"

Please read and understand this entire manual before attempting to assemble or operate this product. If you have any questions regarding the product, please call Hammerhead customer service at 1-877-888-1880, 8:30 a.m. – 8:00 p.m. EST (Monday – Friday) & 10:00 a.m. – 6:00 p.m. EST (Saturday and Sunday).

WARNING

The operation of any power tool can result in foreign objects being thrown into your eyes, which can result in severe eye damage. Before beginning power-tool operation, always wear safety goggles or safety glasses with side shields and a full-face shield, when needed. We recommend using a wide vision safety mask over eyeglasses or standard safety glasses with shields. Always use eye protection marked to comply with ANSI Z87.1.

DANGER







People with electronic devices, such as pacemakers, should consult their physician(s) before using this product. Operation of electrical equipment in close proximity to a heart pacemaker could cause interference or failure of the pacemaker.

Know the Tool

To operate this tool, carefully read this manual and all labels affixed to the angle grinder before using it. Keep this manual available for future reference.

Some of the following symbols may be used on this angle grinder. Please study them and their meaning. Proper interpretation of these symbols will allow you to operate the tool better and more safely.

SAFETY INFORMATION

SYMBOL	DEFINITION	SYMBOL	DEFINITION
V	Volts	n	Rated Speed
A	Amps	/min	Revolutions, Strokes, Beats or Impacts per Minute
Hz	Hertz		Class II Construction
W	Watts		Alternating Current
	Caution		Always wear safety goggles or safety glasses with side shields and a full face shield when operating this product.
	Read the instructions		This symbol designates that this tool is listed by the Intertek Testing Services, to United States Standards.

IMPORTANT: This tool should only be serviced only by a qualified service technician.

IMPORANT SAFETY INSTRUCTIONS

SAVE THESE INSTRUCTIONS-This manual contains important safety and operating instructions for angle grinder Model HAAG060.

DANGER

To reduce the risk of fire or electric shock, carefully follow these operating instructions.

General Power Tool Safety Warnings

WARNING

Read all safety warnings, instructions, illustrations and specifications provided with this power tool. Failure to follow all instructions listed below may result in electric shock, fire and/or serious injury.

SAVE ALL WARNINGS AND INSTRUCTIONS FOR FUTURE REFERENCE.

The term “power tool” in the warnings refers to your mains-operated (corded) power tool or battery-operated (cordless) power tool.

Work area safety

- **Keep work area clean and well lit.** Cluttered or dark areas invite accidents.

SAFETY INFORMATION

- **Do not operate power tools in explosive atmospheres, such as in the presence of flammable liquids, gases or dust.** Power tools create sparks which may ignite the dust or fumes.
- **Keep children and bystanders away while operating a power tool.** Distractions can cause you to lose control.

Electrical safety

- **Power tool plugs must match the outlet. Never modify the plug in any way. Do not use any adapter plugs with earthed (grounded) power tools.** Unmodified plugs and matching outlets will reduce risk of electric shock.
- **Avoid body contact with earthed or grounded surfaces, such as pipes, radiators, ranges and refrigerators.** There is an increased risk of electric shock if your body is earthed or grounded.
- **Do not expose power tools to rain or wet conditions.** Water entering a power tool will increase the risk of electric shock.
- **Do not abuse the cord. Never use the cord for carrying, pulling or unplugging the power tool. Keep cord away from heat, oil, sharp edges or moving parts.** Damaged or entangled cords increase the risk of electric shock.
- **When operating a power tool outdoors, use an extension cord suitable for outdoor use.** Use of a cord suitable for outdoor use reduces the risk of electric shock.
- **If operating a power tool in a damp location is unavoidable, use a ground fault circuit interrupter (GFCI) protected supply.** Use of a GFCI reduces the risk of electric shock.

Personal safety

- **Stay alert, watch what you are doing and use common sense when operating a power tool. Do not use a power tool while you are tired or under the influence of drugs, alcohol or medication.** A moment of inattention while operating power tools may result in serious personal injury.
- **Use personal protective equipment. Always wear eye protection.** Protective equipment such as a dust mask, non-skid safety shoes, hard hat or hearing protection used for appropriate conditions will reduce personal injuries.
- **Prevent unintentional starting. Ensure the switch is in the off-position before connecting to power source and/or battery pack, picking up or carrying the tool.** Carrying power tools with your finger on the switch or energising power tools that have the switch on invites accidents.
- **Remove any adjusting key or wrench before turning the power tool on.** A wrench or a key left attached to a rotating part of the power tool may result in personal injury.

SAFETY INFORMATION

- **Do not overreach. Keep proper footing and balance at all times.** This enables better control of the power tool in unexpected situations.
- **Dress properly. Do not wear loose clothing or jewellery. Keep your hair and clothing away from moving parts.** Loose clothes, jewellery or long hair can be caught in moving parts.
- **If devices are provided for the connection of dust extraction and collection facilities, ensure these are connected and properly used.** Use of dust collection can reduce dust-related hazards.
- **Do not let familiarity gained from frequent use of tools allow you to become complacent and ignore tool safety principles.** A careless action can cause severe injury within a fraction of a second.

Power tool use and care

- **Do not force the power tool. Use the correct power tool for your application.** The correct power tool will do the job better and safer at the rate for which it was designed.
- **Do not use the power tool if the switch does not turn it on and off.** Any power tool that cannot be controlled with the switch is dangerous and must be repaired.
- **Disconnect the plug from the power source and/or remove the battery pack, if detachable, from the power tool before making any adjustments, changing accessories, or storing power tools.** Such preventive safety measures reduce the risk of starting the power tool accidentally.
- **Store idle power tools out of the reach of children and do not allow persons unfamiliar with the power tool or these instructions to operate the power tool.** Power tools are dangerous in the hands of untrained users.
- **Maintain power tools and accessories. Check for misalignment or binding of moving parts, breakage of parts and any other condition that may affect the power tool's operation. If damaged, have the power tool repaired before use.** Many accidents are caused by poorly maintained power tools.
- **Keep cutting tools sharp and clean.** Properly maintained cutting tools with sharp cutting edges are less likely to bind and are easier to control.
- **Use the power tool, accessories and tool bits etc. in accordance with these instructions, taking into account the working conditions and the work to be performed.** Use of the power tool for operations different from those intended could result in a hazardous situation.
- **Keep handles and grasping surfaces dry, clean and free from oil and grease.** Slippery handles and grasping surfaces do not allow for safe handling and control of the tool in unexpected situations.

SAFETY INFORMATION

Service

- **Have your power tool serviced by a qualified repair person using only identical replacement parts.** This will ensure that the safety of the power tool is maintained.

SAFETY WARNINGS FOR ANGLE GRINDERS

Safety Warnings Common for Grinding:

- **This power tool is intended to function as a grinder. Read all safety warnings, instructions, illustrations and specifications provided with this power tool.** Failure to follow all instructions listed below may result in electric shock, fire and/or serious injury.
- **Operations such as sanding, wire brushing, polishing or cutting-off are not recommended to be performed with this power tool.** Operations for which the power tool was not designed may create a hazard and cause personal injury.
- **Do not use accessories which are not specifically designed and recommended by the tool manufacturer.** Just because the accessory can be attached to your power tool, it does not assure safe operation.
- **The rated speed of the accessory must be at least equal to the maximum speed marked on the power tool.** Accessories running faster than their rated speed can break and fly apart.
- **The outside diameter and the thickness of your accessory must be within the capacity rating of your power tool.** Incorrectly sized accessories cannot be adequately guarded or controlled.
- **Threaded mounting of accessories must match the grinder spindle thread. For accessories mounted by flanges, the arbor hole of the accessory must fit the locating diameter of the flange.** Accessories that do not match the mounting hardware of the power tool will run out of balance, vibrate excessively and may cause loss of control.
- **Do not use a damaged accessory. Before each use inspect the accessory such as abrasive wheels for chips and cracks, backing pad for cracks, tear or excess wear, wire brush for loose or cracked wires. If power tool or accessory is dropped, inspect for damage or install an undamaged accessory. After inspecting and installing an accessory, position yourself and bystanders away from the plane of the rotating accessory and run the power tool at maximum no-load speed for one minute.** Damaged accessories will normally break apart during this test time.
- **Wear personal protective equipment. Depending on application, use face shield, safety goggles or safety glasses. As appropriate, wear dust mask, hearing protectors, gloves and workshop apron capable of stopping small abrasive or workpiece fragments.** The eye protection must be capable of stopping flying debris generated by various operations. The dust mask or respirator must be capable of filtering particles generated by your operation. Prolonged exposure to high intensity noise may cause hearing loss.

SAFETY INFORMATION

- **Keep bystanders a safe distance away from work area. Anyone entering the work area must wear personal protective equipment.** Fragments of workpiece or of a broken accessory may fly away and cause injury beyond immediate area of operation.
- **Hold the power tool by insulated gripping surfaces only, when performing an operation where the cutting accessory may contact hidden wiring or its own cord.** Cutting accessory contacting a “live” wire may make exposed metal parts of the power tool “live” and could give the operator an electric shock.
- **Position the cord clear of the spinning accessory.** If you lose control, the cord may be cut or snagged and your hand or arm may be pulled into the spinning accessory.
- **Never lay the power tool down until the accessory has come to a complete stop.** The spinning accessory may grab the surface and pull the power tool out of your control.
- **Do not run the power tool while carrying it at your side.** Accidental contact with the spinning accessory could snag your clothing, pulling the accessory into your body.
- **Regularly clean the power tool’s air vents.** The motor’s fan will draw the dust inside the housing and excessive accumulation of powdered metal may cause electrical hazards.
- **Do not operate the power tool near flammable materials.** Sparks could ignite these materials.
- **Do not use accessories that require liquid coolants.** Using water or other liquid coolants may result in electrocution or shock.

Further safety instructions for all operations

Kickback and Related Warnings:

- Kickback is a sudden reaction to a pinched or snagged rotating wheel, backing pad, brush or any other accessory. Pinching or snagging causes rapid stalling of the rotating accessory which in turn causes the uncontrolled power tool to be forced in the direction opposite of the accessory’s rotation at the point of the binding.
- For example, if an abrasive wheel is snagged or pinched by the workpiece, the edge of the wheel that is entering into the pinch point can dig into the surface of the material causing the wheel to climb out or kick out. The wheel may either jump toward or away from the operator, depending on direction of the wheel’s movement at the point of pinching. Abrasive wheels may also break under these conditions. Kickback is the result of power tool misuse and/or incorrect operating procedures or conditions and can be avoided by taking proper precautions as given below.
- **Maintain a firm grip on the power tool and position your body and arm to allow you to resist kickback forces. Always use auxiliary handle, if provided, for maximum control over kickback or torque reaction during start-up.** The operator can control torque reactions or kickback forces, if proper precautions are taken.

SAFETY INFORMATION

- **Never place your hand near the rotating accessory.** Accessory may kickback you're your hand.
- **Do not position your body in the area where power tool will move if kickback occurs.** Kickback will propel the tool in direction opposite to the wheel's movement at the point of snagging.
- **Use special care when working corners, sharp edges etc. Avoid bouncing and snagging the accessory.** Corners, sharp edges or bouncing have a tendency to snag the rotating accessory and cause loss of control or kickback.
- **Do not attach a saw chain woodcarving blade or toothed saw blade.** Such blades create frequent kickback and loss of control.

Safety Warnings Specific for Grinding:

- **Use only wheel types that are recommended for your power tool and the specific guard designed for the selected wheel.** Wheels for which the power tool was not designed cannot be adequately guarded and are unsafe.
- **The grinding surface of centre depressed wheels must be mounted below the plane of the guard lip.** An improperly mounted wheel that projects through the plane of the guard lip cannot be adequately protected.
- **The guard must be securely attached to the power tool and positioned for maximum safety, so the least amount of wheel is exposed towards the operator.** The guard helps to protect the operator from broken wheel fragments, accidental contact with wheel and sparks that could ignite clothing.
- **Wheels must be used only for recommended applications. For example: do not grind with the side of cut-off wheel.** Abrasive cut-off wheels are intended for peripheral grinding, side forces applied to these wheels may cause them to shatter.
- **Always use undamaged wheel flanges that are of correct size and shape you're your selected wheel.** Proper wheel flanges support the wheel thus reducing the possibility of wheel breakage. Flanges for cut-off wheels may be different from grinding wheel flanges.
- **Do not use worn down wheels from larger power tools.** Wheel intended for larger power tool is not suitable for the higher speed of a smaller tool and may burst.

Additional Safety Warnings:

- **Use only type 27 grinding wheels.** Using accessories not designed for this tool can cause serious injury.
- GFCI and personal protection devices like electrician's rubber gloves and footwear will further enhance your personal safety.
- **Do not use AC only rated tools with a DC power supply.** While the tool may appear to work, the electrical components of the AC rated tool are likely to fail and create a hazard to the operator.



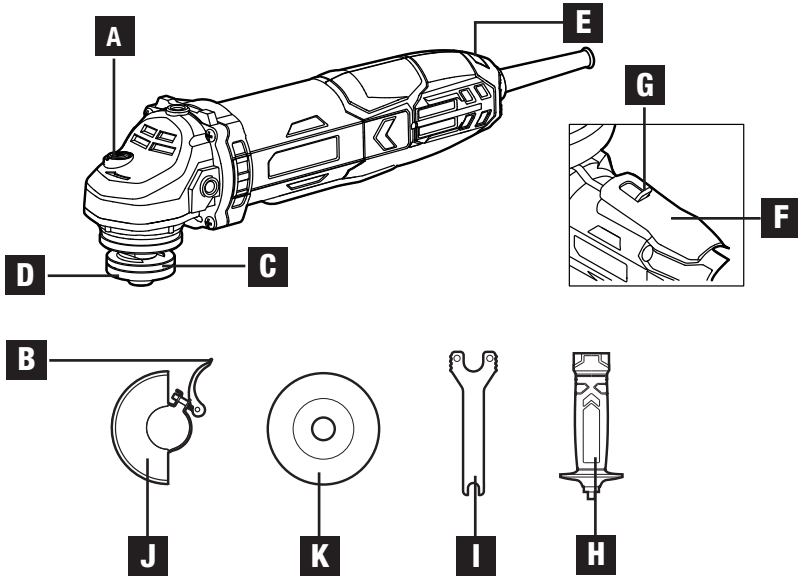
SAFETY INFORMATION

- **Keep handles dry, clean and free from oil and grease.** Slippery hands cannot safely control the power tool.
- **Use clamps or other practical way to secure and support the workpiece to a stable platform.** Holding the work by hand or against your body is unstable and may lead to loss of control.
- **Develop a periodic maintenance schedule for your tool. When cleaning a tool be careful not to disassemble any portion of the tool since internal wires may be misplaced or pinched or safety guard return springs may be improperly mounted.** Certain cleaning agents such as gasoline, carbon tetrachloride, ammonia, etc. may damage plastic parts. Risk of injury to user. The power cord must only be serviced by a HAMMERHEAD Factory Service Center or Authorized HAMMERHEAD Service Station.

PREPARATION

Before attempting to use the Angle Grinder, familiarize yourself with all of its operating features and safety requirements.

PACKAGE CONTENTS



PARTS	DESCRIPTION
A	Spindle lock button
B	Guard Latch
C	Inner flange
D	Outer flange
E	Live tool indicator
F	Paddle Switch
G	“Lock-Off” Switch Release Lever
H	Side Handle
I	Wrench
J	Grinding guard
K	Grinding Wheel 3pcs

OPERATING INSTRUCTIONS

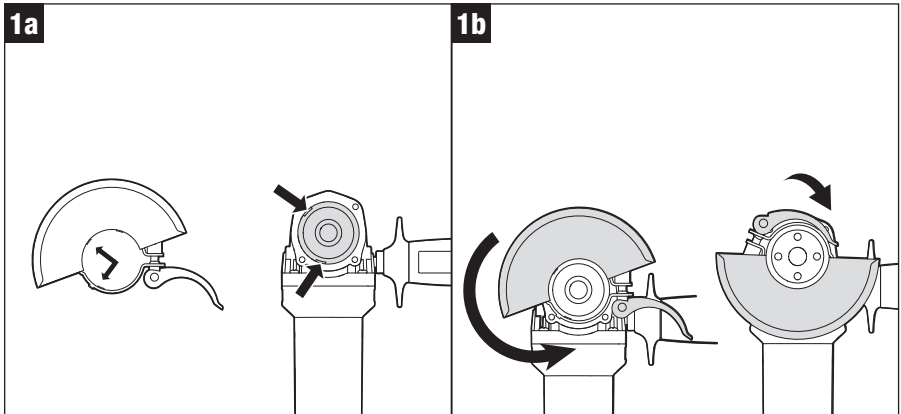
1. Wheel guard installation

⚠ WARNING: Always ensure the tool is switched off and the plug is removed before making any adjustments or maintenance procedures.

⚠ WARNING: This tool comes with the guard for grinding. Do not use this guard for cutting purpose. Not using the guard suited to the work you are carrying out can cause injury.

This guard has been specifically designed to offer important protection in the rare event that a problem with the disc or item being worked on arises. Using the guard offers additional versatility in confined spaces.

- Open the guard latch and position the wheel guard on the spindle neck so that the two lugs on the guard line up with the two notches on the spindle neck.
- Rotate wheel guard into the desired working position. According to different operation, the guard can be rotated anti-clockwise direction from 90° to 210° for protection of the operator.
- Close the guard latch to secure the guard.



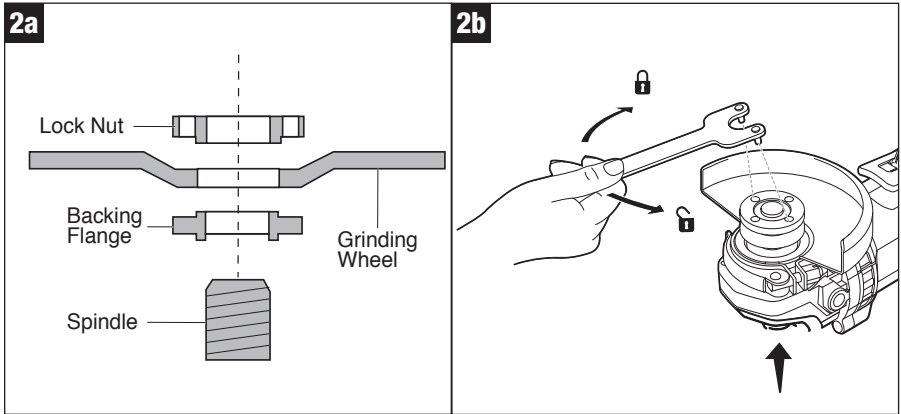
2. Grinding Wheel Assembly

⚠ WARNING: Always ensure the tool is switched off and the plug is removed before making any adjustments or maintenance procedures.

- Place the inner flange on the spindle. Check to ensure that the inner flange is properly seated on the spindle. It will cause the spindle to rotate when the backing flange is rotated.

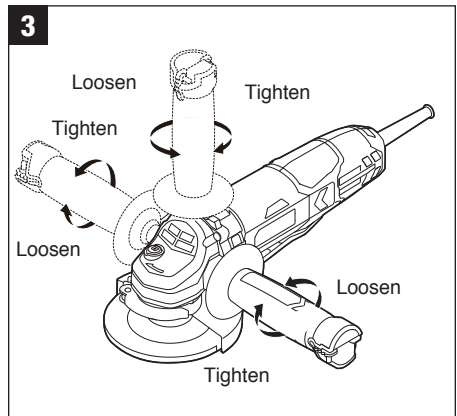
OPERATING INSTRUCTIONS

- b) Place the grinding wheel on the backing flange. Thread the outer flange onto the spindle with the flat side of the flange facing up. Making sure that the opening in the wheel is positioned around the raised portion of the outer flange.
- c) Press the spindle-lock button to keep the spindle from moving. While pressing the spindle-lock button, tighten the outer flange by turning it clockwise with the wrench supplied.



3. Side handle

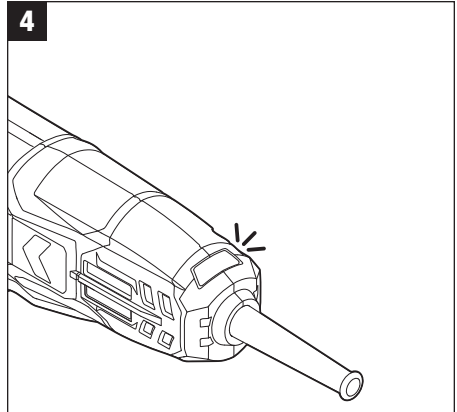
The side handle can be assembled in three different positions around the casing to meet the operator's different needs. To assemble the handle, simply screw it into one of the attachment points. Check that the handle has been securely fastened, but don't screw it in too tightly



OPERATING INSTRUCTIONS

4. Live tool indicator

This tool features a live tool indicator which illuminates as soon as the tool is connected to the supply. This warns the user that the tool is connected and will operate when the switch is pressed.



5. Wrench storage

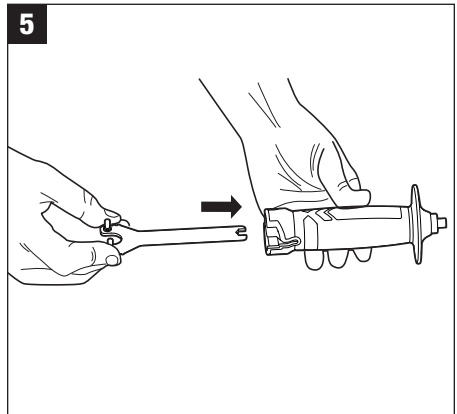
In order for convenient using and storing, this tool features a wrench storage function which you can store your wrench into the side handle after use.

Insert the wrench into the slot which is in the side handle.

The wrench is totally stored until the prominences on the wrench is locked on the side handle sockets.

To take the wrench out of the handle, hold the two sides of the wrench pin and pull it out.

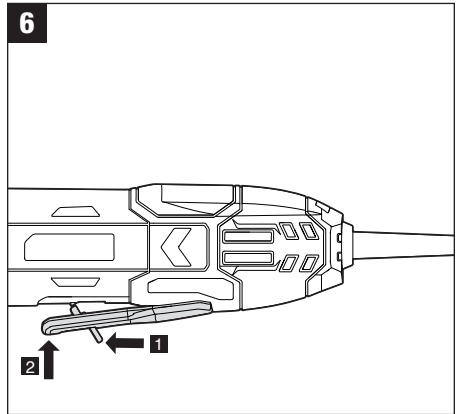
NOTE: indentations are designed on the two sides of the wrench pin, in order for easier operation.



OPERATING INSTRUCTIONS

6. Paddle Switch

- a) To unlock the switch and turn tool on: push the “lock-off” switch release lever forward to unlock paddle switch, then squeeze paddle switch
- b) To switch tool “off”: release pressure on paddle lever. The switch is spring loaded and will return to “off” position automatically.



7. Grinding

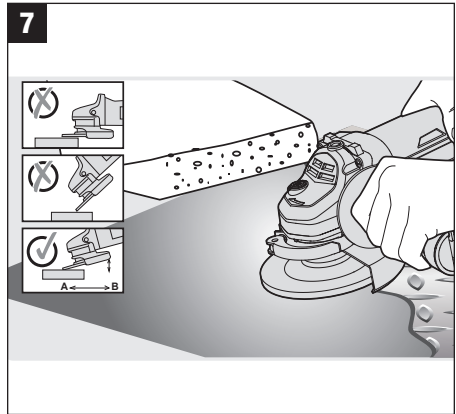
⚠ WARNING: Excessive or sudden pressure on the wheel will slow grinding action and put dangerous stresses on the wheel.

⚠ CAUTION: Never press the spindle locking button while the wheel is rotating.

Efficient grinding is achieved by controlling the pressure and keeping the angle between wheel and workpiece at 10° to 15°. If the wheel is flat, the tool is difficult to control. If the angle is too steep, the pressure is concentrated on a small area, causing burning to the work surface.

When grinding with a new wheel, be certain to grind while pulling tool backwards until the wheel becomes rounded on its edge. New wheels have sharp corners, which tend to “bite” or cut into work piece when pushing forward.

⚠ WARNING: Always disconnect the device before performing any adjustment or maintenance operation. If the replacement of the supply cord is necessary, this has to be done by the manufacturer or his agent in order to avoid a safety hazard.



CARE AND MAINTENANCE



WARNING:

- **Always disconnect the device before performing any adjustment or maintenance operation.** If the replacement of the supply cord is necessary, this has to be done by the manufacturer or his agent in order to avoid a safety hazard.
- **Disconnect from the power supply immediately if the supply cord is damaged. Take care not to expose this tool to the rain.**
- **If the carbon brushes need to be replaced, have this done by a qualified repair person (always replace the two brushes at the same time)**

1. Cleaning

- Avoid using solvents when cleaning plastic parts. Most plastic parts are susceptible to damage from various types of commercial solvents and may be damaged by their use. Use clean cloths to remove dirt, carbon dust, etc.

2. Lubrication

- All the bearings in this tool are lubricated with a sufficient amount of high grade lubricant for the life of the unit under normal operating conditions, therefore no further lubrication is required.

3. Tightening the disc safety guard

Disconnect the plug from the electrical outlet.

- a) Remove the flanges and the wheel; refer to the section “**Grinding Wheel Assembly**”.
- b) Open the guard latch and rotate the guard to a proper position.
- c) Close the guard latch and tighten the screw on the guard with the wrench supplied.

NOTE: After the wheel guard is tightened, the guard should be fixed firmly when the latch is closed and rotated normally when the latch is opened.

EXTENSION CORDS

⚠ WARNING: If an extension cord is necessary, a cord with adequate size conductors that is capable of carrying the current necessary for your tool must be used. This will prevent excessive voltage drop, loss of power or overheating. Grounded tools must use 3-wire extension cords that have 3-prong plugs and receptacles.

NOTICE: The smaller the gauge number, the heavier the cord.

RECOMMENDED SIZES OF EXTENSION CORDS 120 VOLT ALTERNATING CURRENT TOOLS

Tool's Ampere Rating	Cord Size in A.W.G				Wire sizes in mm ²			
	Cord length in feet 25 50 100 150				Cord length in meters 15 30 60 120			
3-6	18	16	16	14	0.75	0.75	1.5	2.5
6-8	18	16	14	12	0.75	1.0	2.5	4.0
8-10	18	16	14	12	0.75	1.0	2.5	4.0
10-12	16	16	14	12	1.0	2.5	4.0	-
12-16	14	12	-	-	-	-	-	-

TROUBLESHOOTING

Suspected malfunctions are often due to causes that the users can fix themselves. Therefore, check the product using this section. In most cases the problem can be solved quickly.

⚠ WARNING: Only perform the steps described within these instructions! All further inspection, maintenance and repair work must be performed by an authorised service centre or a similarly qualified specialist if you cannot solve the problem yourself!

PROBLEM	POSSIBLE CAUSE	SOLUTION
Product does not start.	Not connected to power supply.	Connect to power supply.
	Power cord or plug is defective.	Have the tool serviced by an Authorized Service Center.
	Other electrical defect to the product.	Have the tool serviced by an Authorized Service Center.
Product does not reach full power.	Extension cord not suitable for operation with this product	Use a proper extension cord
	Power source (e.g. generator) has too low voltage	Connect to another power source
	Air vents are blocked.	Clean the air vents
	Product overload	Remove the tool from the workpiece then switch on again
Unsatisfactory result	Disc is worn	Replace with a new one
	Disc not suitable for workpiece material.	Use proper disc.

WARRANTY

This Angle grinder is warranted to the original purchaser from the original purchase date for 24 Months, Hammerhead consumer portable power tool models will be free from defects in material or workmanship for a period of ninety days if the tool is used for professional use. Please retain your receipt.

This Angle grinder is warranted to the original user to be free from defects in material and workmanship. If you believe that the Angle grinder is defective at any time during the specified warranty period, call HAMMERHEAD support at 1-877-888-1880 to speak with a customer service agent. This warranty does not cover: (1) Part failure due to normal wear or tool abuse; (2) any parts have been altered or modified by anyone other than an authorized HAMMERHEAD personnel.

This warranty excludes bits, bulbs and accessories. This warranty gives you specific legal rights, and you may also have other rights that vary from state.

