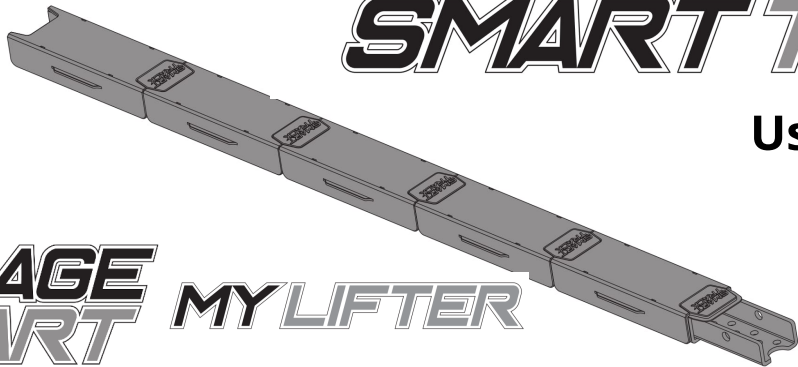


# ***SMART TRACK***

## **User Manual**

Save this manual for future reference. For a digital version of this manual, visit [www.garagesmart.com/manuals](http://www.garagesmart.com/manuals)

***GARAGE  
SMART*** ***MY LIFTER***







1

## ABOUT TRACK SYSTEM

Smart Track is an expandable system that allows you to make your garage smart.

Various products are available to help you reinvent your garage to make simple tasks simple and smart. Lifting products are also available to help you keep your garage tidy by raising large cumbersome items to your ceiling.

## SAFETY WARNINGS

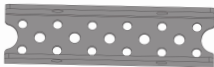
- Do not install track in any other manor than specified in instructions.
- Do not hang anything other than Garage Smart products from track.
- Installed lag screws must be no less than **16" apart**.
- Installed lag screws must be no greater than **24" apart**.
- 2 lag screws must be used in every piece of track when possible.
- No more than 2 myLifters should be installed on any 1 track.

# PARTS IDENTIFIER

TRACK, A (x1)



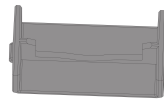
CONNECTOR  
B (x1)



TRACK COVER  
C (x5)



GAP COVER  
D (x5)



INNER CLIP, E (x4)



CONNECTOR BOLTS,  
F (x6)



LAG WASHER ,G (x2)



LAG SCREW, J (x2)

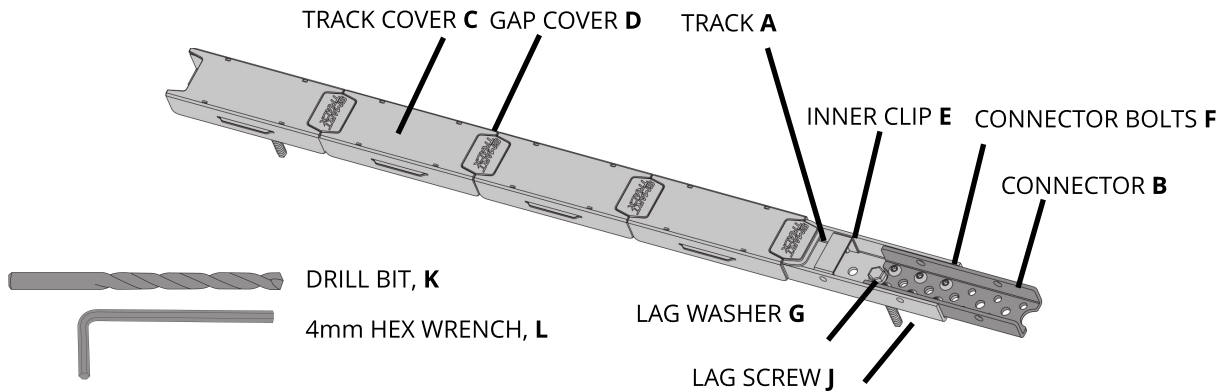


6mm DRILL BIT, K (x1)



4mm HEX WRENCH  
L (x1)

3

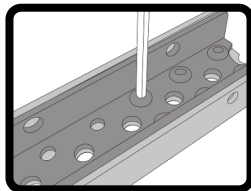
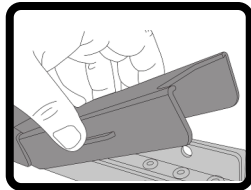


# INSTALLATION

## Required Tools

- Drill
- 1/2" socket or wrench
- Screwdriver
- Stud finder

1. Remove track covers (C) and lag screws (J), leaving the track (A) bare.



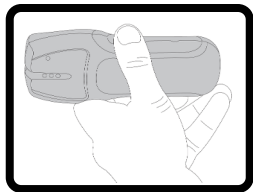
5

2. Use a **stud finder** to locate the center of the ceiling joist where you want to place the track (A). Be sure you can install the connector bolts (F) through the center of a joist and have *at least 16 inches* of space between bolts.



### **WARNING**

Failure to mount the mounting bracket and myLifter unit to secure ceiling joist or rafter may result in property damage, serious personal injury or death.



### **CAUTION**

Do not install more than 2 myLifter's on the same section of track.



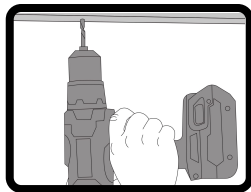
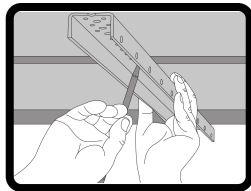
3. Hold one track (A) section up to ceiling and mark through both holes and on track itself where you plan to anchor to the ceiling. Then set the track aside and double check the mark does hit the center of the joist.

4. Use the pilot drill bit (K) provided to drill a 3 inch deep hole into the joist at both marked locations. Be sure the hole stays aligned with the joist.



## WARNING

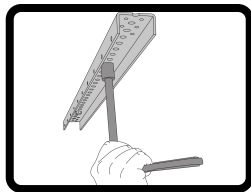
Inserting lag screws into a ceiling joist without first drilling pilot holes may split the wood and result in property damage, serious personal injury or death.



7

5. Hold the track up to the ceiling and align the holes. Start to thread the lag screws (J) through the washers (G) and through the marked holes.

6. Using a wrench (L), drive in the lag screws (J) until they are flush and tight. DO NOT overtighten.



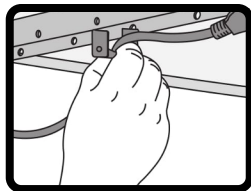
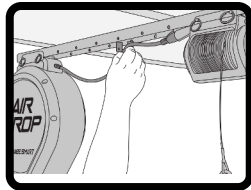
**! WARNING**

DO NOT use an impact driver to insert lag screws into the ceiling joist. The impact will overtighten the screws - causing them to fail - and may result in property damage, serious personal injury or death.

7. Mount all Garage Smart products to the track (A) in the desired location. Use either the mounting pins or the universal mount depending on the product.

8. Route all wires through the track above the products.

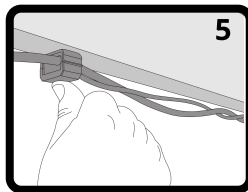
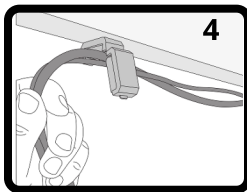
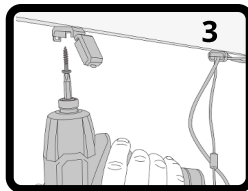
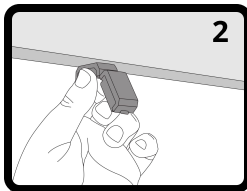
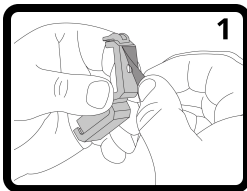
9. Use the inner wire clip (E) to secure them in place.



9

## WIRE MANAGEMENT

1. Peel off sticker backing.
2. Stick the clip where you want it.
3. Install screw through the hole in the center.
4. Place all wires into the clip.
5. Securely close the clip.



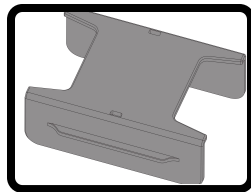
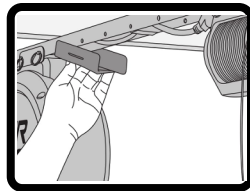
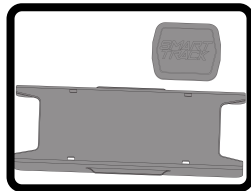
### **!** NOTE

Clip can hold both AC and DC cables.

Screw can be placed in either drywall or a stud.

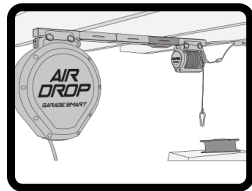
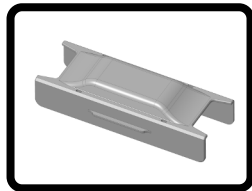
10. When all wires are routed in a clean way, use the track covers (C) and gap covers (D) to hide any open sections of track.

11. Some product kits will come with half covers if their specific product spacing requires unusual placement.



11

12. If connecting the AC wire plugs to an extension cord, use the enlarged track covers (sold separately).



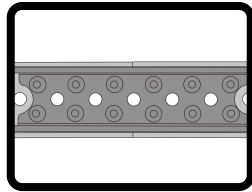
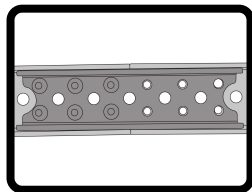
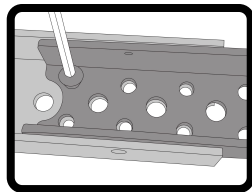
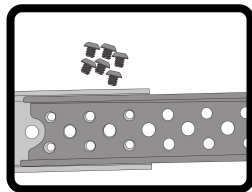
## CONNECTING MORE TRACK

1. Add additional track sections using the connector. Install the hex screws (J) into all 12 positions firmly.



### NOTE

This can be done before or after mounting the track to the ceiling.



## 13 **FREQUENTLY ASKED QUESTIONS (FAQ)**

### **How much weight can my track hold?**

Smart Track is designed to be used with no more than 2 lifters per track, plus any of our other products that you can fit on the available spaces. This means, 100 lbs per lifter plus up to 3 other Garage Smart products.

### **How many tracks can I link together?**

The only limitation here is the length of your garage.

### **Can I mount my track to my wall instead of the ceiling?**

NO, Smart Track is specifically designed to hold weight from the ceiling.



# LIMITED WARRANTY

## Limited Three-Year Warranty on Hardware

Garage Smart offers a three-year warranty on all hardware components of its lifting systems. If a defect in the hardware, or any component thereof, appears at any time during the first three years after purchase, Garage Smart will repair or replace (at its option) the system or the defective component at no cost to you beyond the cost of shipping the defective item to us.

## Who Makes This Warranty

This warranty is made by:

Garage Smart

## Who Is Covered

This warranty extends only to the original purchaser of the product. This warranty is intended for natural persons only and does not extend to any corporation, limited liability company, or commercial entity.

## What Is Covered

The limited three-year warranty on hardware covers manufacturing defects and includes parts, labor, and the cost of shipping the repaired (or replacement) product from Garage Smart to you. The warranty does not cover installation of repaired or replacement items. If we send replacement parts, we may use new or reconditioned parts. If we send a replacement unit, we may use a new or reconditioned unit.

## Where and How to Obtain Warranty Service

You can obtain warranty service from Garage Smart at the address indicated below. It is your responsibility to deliver or ship the defective product to us at your expense, together with a copy of your receipt showing date of purchase and a description of the claimed defect, prior to the expiration of the warranty period. To obtain information regarding this warranty, you may contact us by mail, e-mail, or phone.

Garage Smart: 3000 S Vista Way Provo, UT 84606

Support@GarageSmart.com 1-909-493-5438

## 15 Exceptions and Exclusions

This warranty does not include damage or defects resulting from misuse, accident, failure to maintain, or any other causes following your purchased of the product.

Use of the Lifter system with any other system or components ( including affixing non Garage Smart attachments or accessories) voids this warranty. Failure to follow the owner's manual in installation or use of the Lifter system voids the warranty. Unauthorized repair or modification voids the warranty.

The Lifter system is intended for personal, indoor, home use. Garage Smart does not warrant its lift system for commercial use, and any such use voids the warranty.

TO THE GREATEST EXTENT PERMITTED BY LAW, THIS WARRANTY IS IN LIEU OF AND EXCLUDES ALL OTHER WARRANTIES NOT EXPRESSLY SET FORTH HERIN, WHETHER EXPRESS OR IMPLIED, INCLUDING BUT NOT LIMITED TO ANY WARRANTIES OF MERCHANTABILITY AND FITNESS FOR A PARTICULAR PURPOSE.

## Limitation of Liability

THE SOLE REMEDIES AFFORDED UNDER THIS WARRANTY ARE REPAIR, REPLACEMENT, OR , IF REPAIR OR REPLACEMENT IS NOT COMMERCIALY PRACTICABLE OR CANNOT BE TIMELY MADE, A REFUND OF THE PURCHASE PRICE. IN NO EVENT SHALL THE LIABILITY OF GARAGE SMART RELATED TO ANY PRODUCT EXCEED THE PURCHASE PRICE OF THE PRODUCT. YOUR USE OF GARAGE SMART PRODUCTS IS AT YOUR OWN RISK. GARAGE SMART SHALL NOT BE LIABLE UNDER ANY CIRCUMSTANCES FOR CONSEQUENTIAL, INDIRECT, SPECIAL, OR INCEDENTAL DAMAGES ARISING FROM OR IN CONNECTION WITH THE USE OF ANY GARAGE SMART PRODUCT. (SOME STATES DO NOT ALLOW THE EXCLUSION OR LIMITATION OF INCIDENTAL OR CONSEQUENTIAL DAMAGES, SO THE ABOVE LIMITATION OR EXCLUSION MAY NOT APPLY TO YOU.)

## Other Legal Rights

This warranty gives you specific legal rights and you may also have other rights which vary from state to state.



