

Assembly Instructions

Eastern Front: Rural Cottage 2

P/N: KD-HS-EF-P-002W

Thank you for purchasing this product. This building is ideal for use in any WW II Eastern Front small town or rural battlefield. However, the type of architecture can be seen in many earlier settings such as the Napoleon era, Renaissance, and as far back as the Middle-Ages. We hope you enjoy assembling and customizing the Eastern Front Rural Cottage 2 model kit and spend countless hours gaming with the piece.

Skill Level: Intermediate

Items Required for Assembly:

- Glue (We use fast drying wood glues, but note that there are many different glues on the market.)
Optional (Recommended):
- Several clamps/cloth pins/rubber bands
- Paper towel
- If painting the model, colored spray primer, desired acrylic paint colors, brushes, and clear flat or matte spray lacquer for under and over coating finish.
- For painting ideas, please see our website gallery pictures.

Cautions:

- This model contains small parts, keep away from small children.
- All our models are designed for miniature enthusiasts and collectors, they are not toys.
- For ages 14+
- MDF is a pressed wood material; do not submerge in water as this will cause damage to the product.
- Avoid excessive moist environments.

Cleaning & Storage:

- Occasionally wipe with a slightly dampened cloth
- Store your building in a cool, dry location.

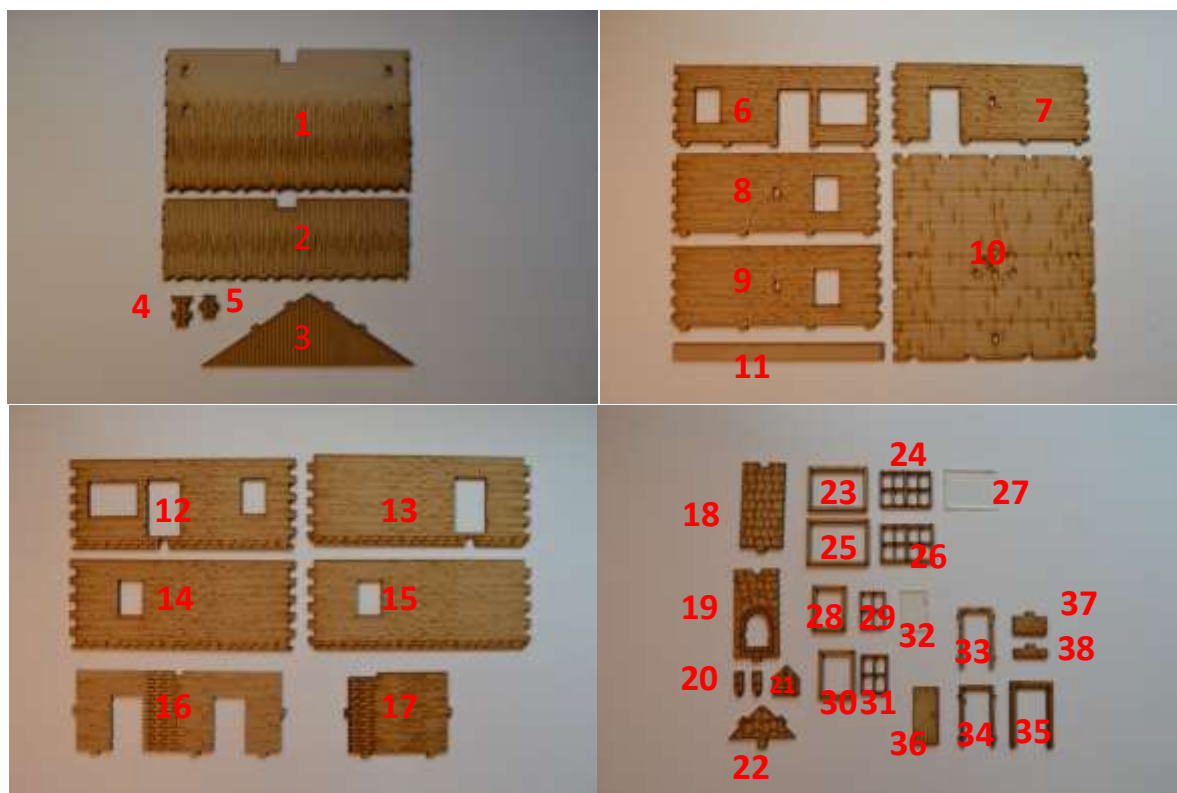
Pre-assembly:

Organize the model pieces in group and familiarize yourself with their purpose. A description of all the parts included in your kit is on the next page.

***** If you are painting your model,** we recommend that you first apply a clear flat/matte clear lacquer, then follow by a spray primer (color of your choice) to all your pieces prior to assembly. This helps seal the porous surface of the MDF and will provide a consistent surface to apply your paints.

Tips:

- Wipe off excessive glue
- If you can put a clamp on it or a rubber band to hold parts in place while glue bonds, do it.
- **Do a walkthrough of the assembly without gluing to get familiar with the way the connections and pieces fit.**

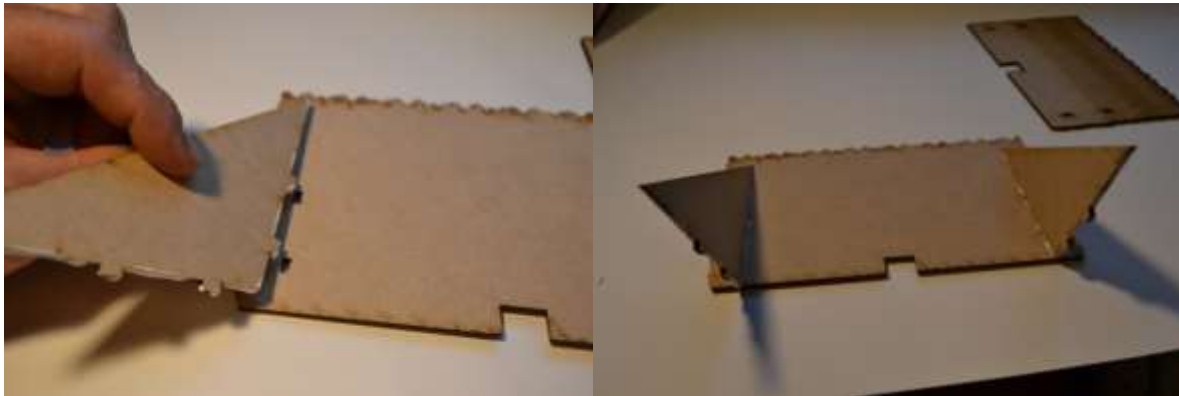
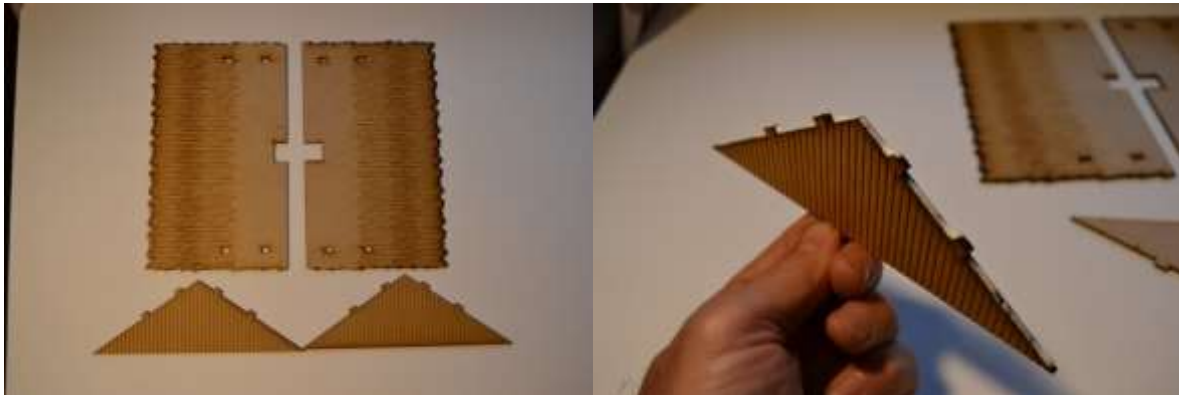


1 – Main Roof Panel (x2)
 2 – Upper Roof Overlay (x2)
 3 – Roof Gable End (x2)
 4 – Chimney Side A (x2)
 5 – Chimney Side B (x2)
 6 – Inner Front Wall Panel
 7 – Inner Side Door Wall Panel
 8 – Inner Rear Wall Panel
 9 – Inner Side Wall Panel
 10 – Floor Panel
 11 – Floor Supports (x6)
 12 – Outer Front Wall Panel
 13 – Outer Side Door Wall Panel

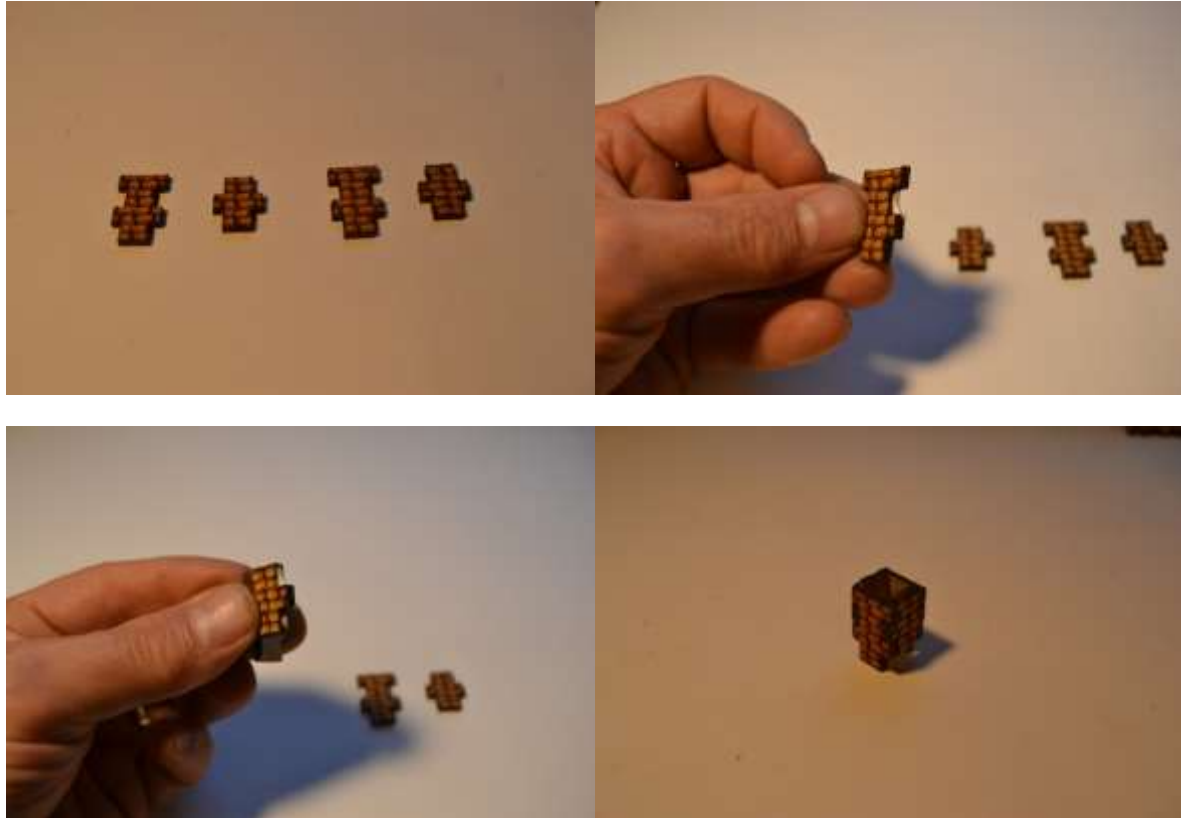
14 – Outer Rear Wall Panel
 15 – Outer Side Wall Panel
 16 – Interior Wall with Doors
 17 – Interior Wall
 18 – Interior Rear Chimney (x2)
 19 – Kitchen Fireplace
 20 – Fireplace Surface Supports
 21 – Fireplace Surface
 22 – Interior Chimney Top
 23 – Interior Large Window Frame
 24 – Interior Large Window Panel
 25 – Exterior Large Window Frame
 26 – Exterior Large Window Panel

27 – Large Window Acrylic Insert
 28 – Interior Small Window Frame (x3)
 29 – Interior Small Window Panel (x3)
 30 – Exterior Small Window Frame (x3)
 31 – Exterior Small Window Panel (x3)
 32 – Small Window Acrylic Insert (x3)
 33 – Exterior Door Jam (x2)
 34 – Interior Door Jam with Hinge (x4)
 35 – Door Frame (x8)
 36 – Door (x4)
 37 – Lower Step (x2)
 38 – Upper Step (x2)

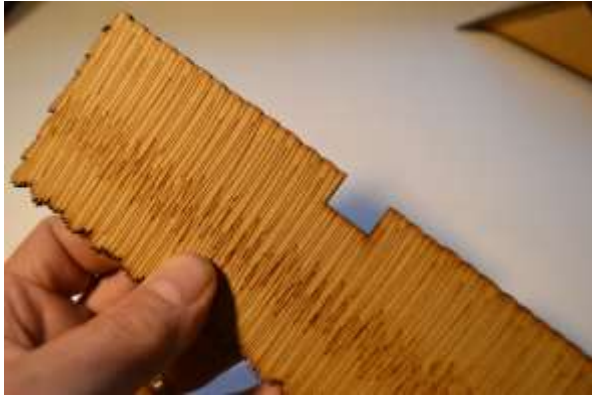
Step 1: Start assembling the roof (parts 1 (x2), 3 (x2)). Apply glue to the roof gable ends on the 4 edges that have the tabs. Insert Gable tabs into Main roof panels to form the main roof structure. If needed, use rubber bands to help hold the structure together while the glue takes hold. Set aside.



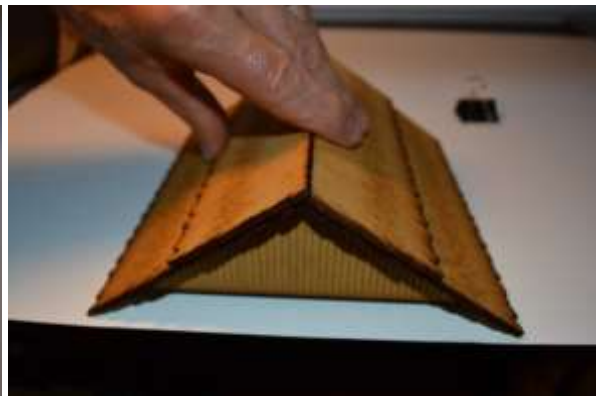
Step 2: Assemble chimney (parts 4 (x2), 5 (x2)). Apply glue to the edges of the chimney pieces and connect them via the tab positions with the brick finish facing outward. Set aside.



Step 3: Notice that one of the overlay panels (part 2(x2)) has a series of rounded bumps along its edge; the other overlay edge is completely smooth. This bumpy piece will set over the other overlay at the peak.



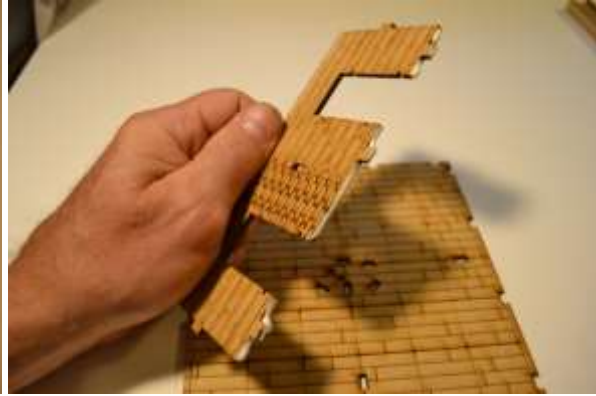
Apply glue to the unfinished sides of the upper roof overlays. Attach the overlays on the main roof with the flat edges at the peak. Apply glue to the base of the chimney and insert into roof hole. Adjust the chimney so it is straight and sits snug in the hole.



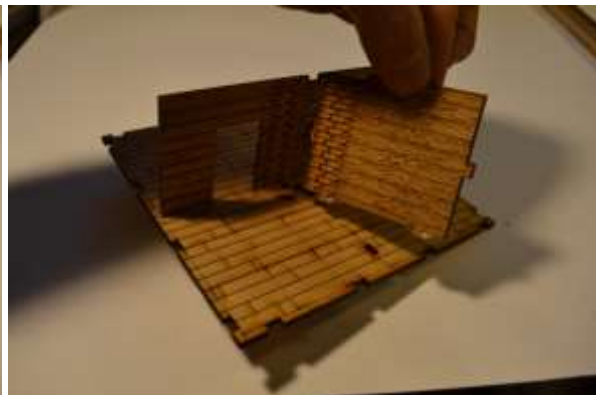
Use clamps to hold the overlay in place as the glue dries. The roof is complete. Set aside.



Step 4: Interior Walls and floor assembly. Begin with the floor piece (part 10) and the two interior walls (parts 16 and 17). Position the floor panel so that the angled notches in the center of the panel are closer to you. Apply glue to the bottom edge of the interior wall with doors (#16). Insert this wall onto the panel.



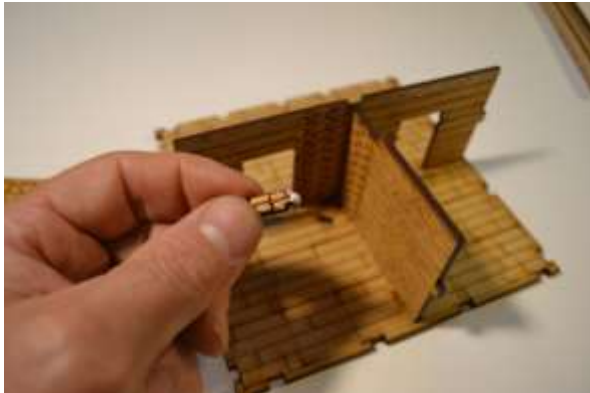
Apply glue to interior wall (#17) along the bottom edge and inner edge with tab and brickwork. Insert the wall into floor panel and other door wall as seen in picture.



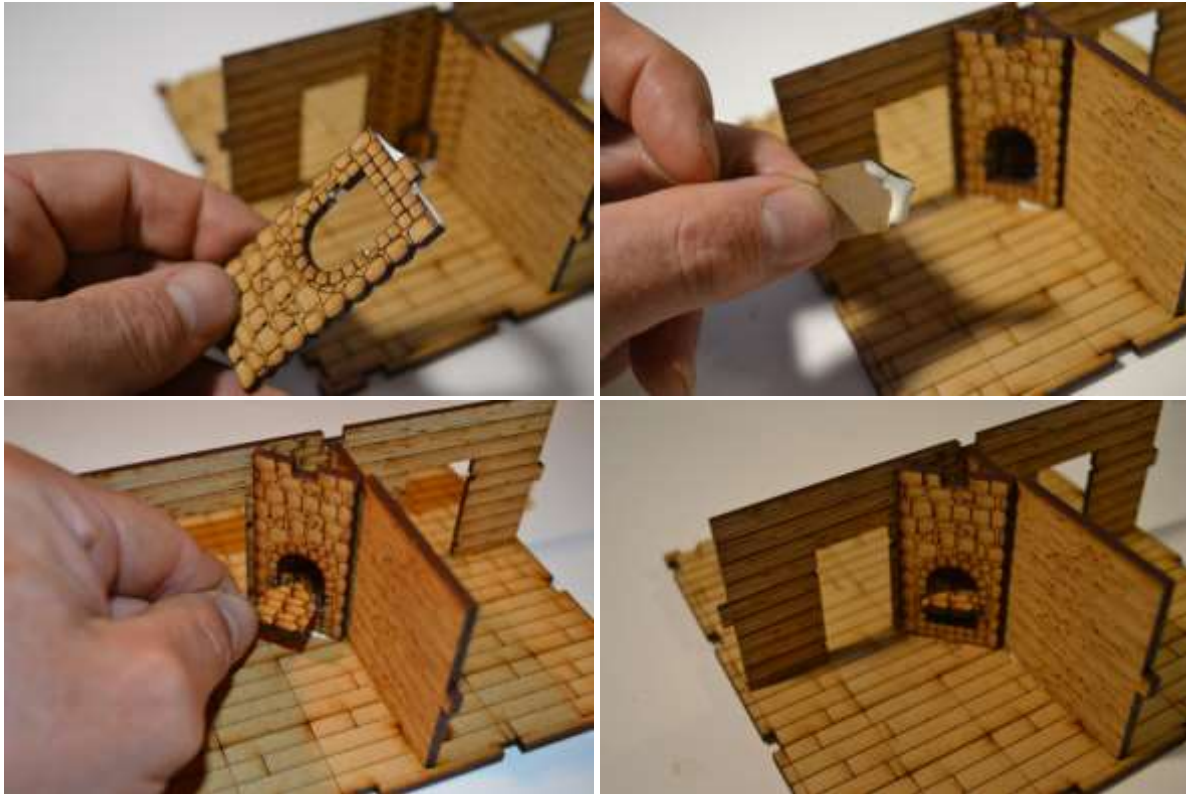
Inner walls are in position. Wipe off excess glue.



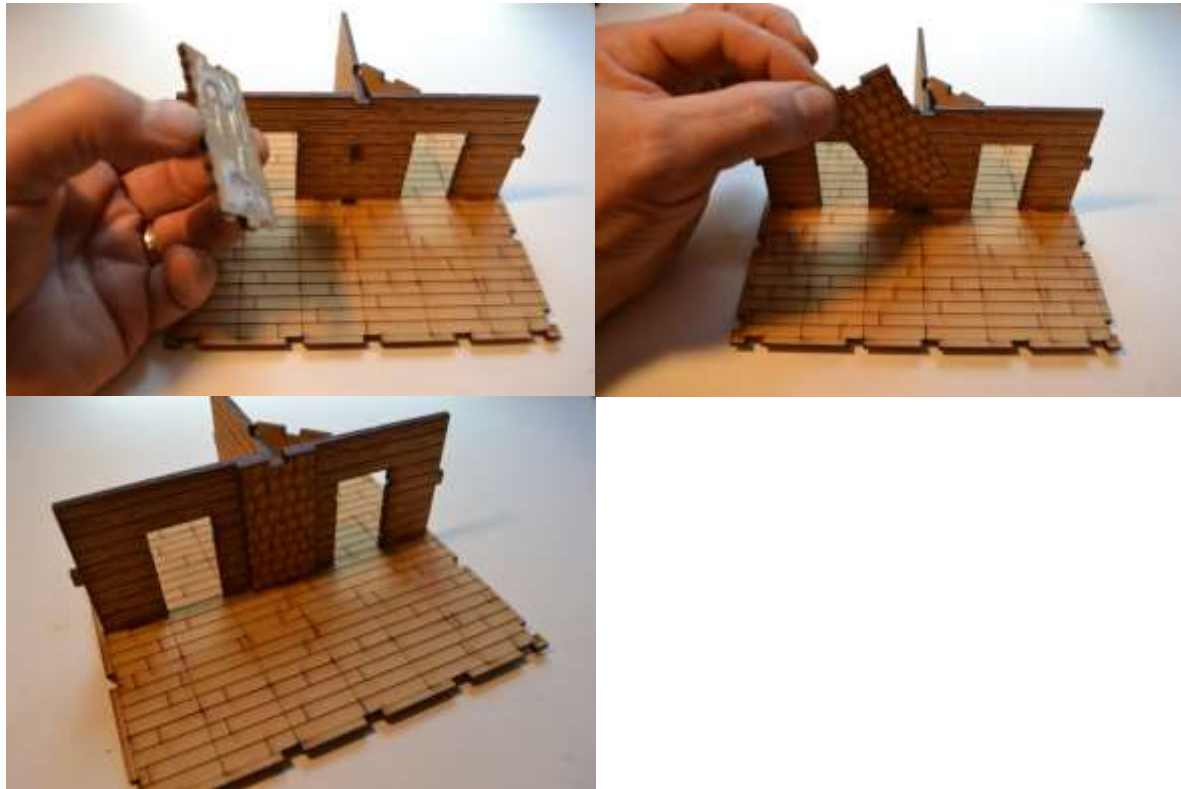
Step 5: Fireplace assembly. Take the two Fireplace Surface Supports (parts 20 (x2)) and glue into the notches on floor panel.



Then apply glue to the bottom edge of the Kitchen Fireplace (part 19) and the two inner notches of the fireplace opening. Insert #19 into the corner slot. Apply glue to the unfinished side of the Fireplace surface piece (part 21) and insert into the fireplace opening notches.



Apply glue to the bottom edges and unfinished sides of a rear fireplace panel (part 18). Insert them in their locations shown in pictures.



Ready the second rear fireplace panel (part 18), but this one will go into a corner notch. Apply a small amount of glue along the edges of the unfinished side as well as the bottom edge. Insert into position.



Finally, apply glue to the unfinished side of the interior chimney top (part 22). Insert into position with the finished side up. Wipe off excess glue.

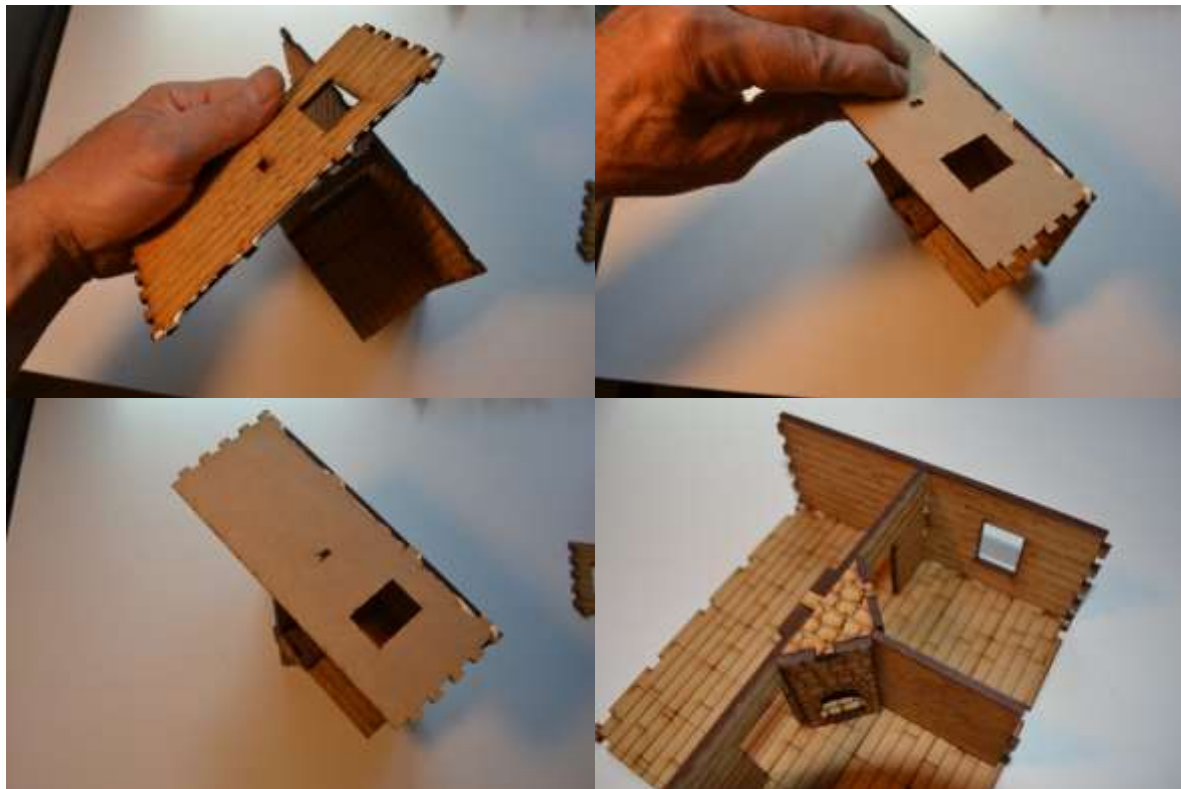


Step 6: Floor support and Inner/Outer wall assembly. Separate the floor supports (part 11) into pairs. Glue the pairs together, taking care to ensure the edges of the pairs are flush with each other. Clamp and set aside.



Next, begin attaching the inner walls (parts 6, 7, 8, and 9) to the floor panel. Each panel will fit in one position, so locate the position of each panel. For illustration, I started with inner wall (#8), but the order does not matter.

Apply glue to the interior wall edge that will attach to inner wall (#8). Also apply glue to the bottom edge of inner wall (#8). Attach to the floor panel. The interior wall tab will fit into the center notch on the inner wall panel (#8). Wipe off excess glue.



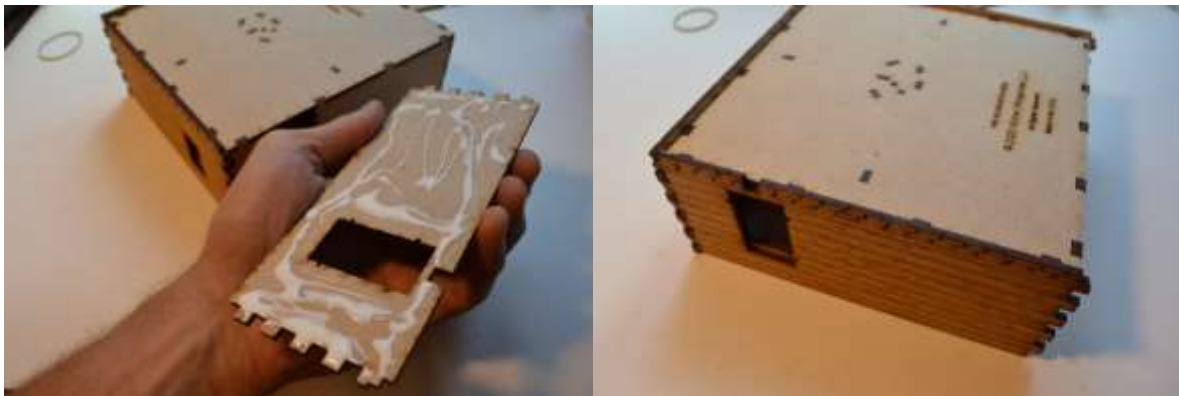
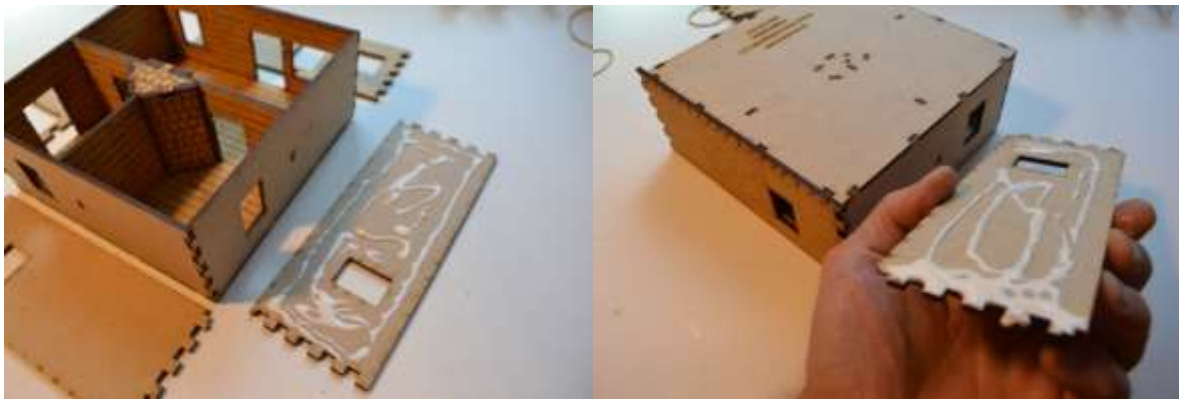
Repeat with the next wall piece, but also add glue to side edge.



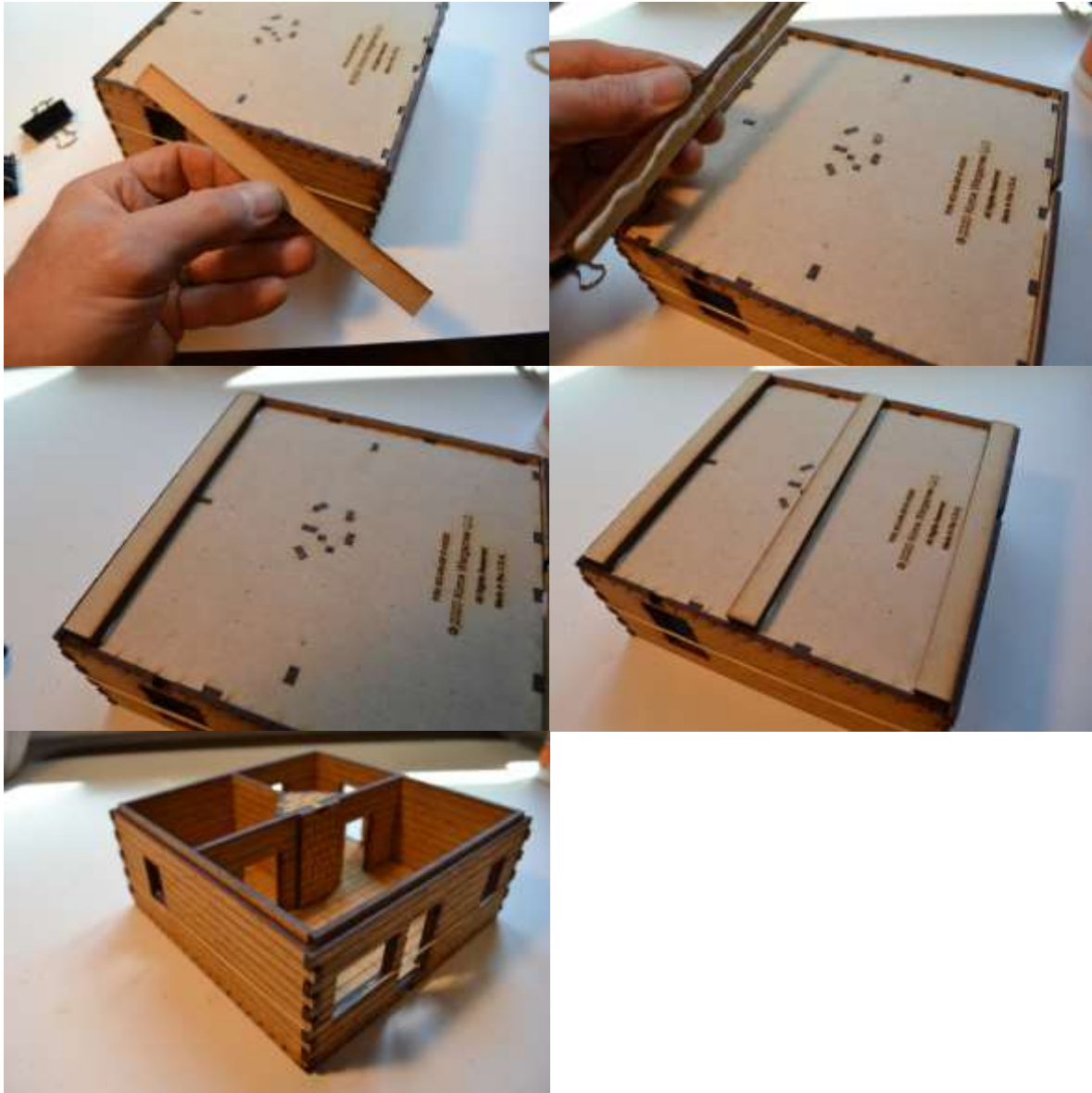
Continue attaching the inner walls by applying glue to the appropriate joints. Note that on the last piece, apply glue to both side edges of the wall. Ideally, placing a rubber band around the completed inner wall assembly will help hold it all together properly until the glue set.



Step 7: Outer wall assembly (parts 12, 13, 14, and 15). Locate the appropriate position of each outer wall panel. The outer wall assembly is like the inner walls. They only go in a specific order. It is easy to confuse parts #8 and #9 positions. Test assembly with a dry run (no glue) to ensure proper order. Pick a position to begin and apply glue to the unfinished side of that piece. Attach to the appropriate side of the main building assembly. Flip the main building upside-down. Continue attaching outer walls with glue in the appropriate joints and unfinished sides. Place a rubber band around the structure when all four walls are in place. **Move on immediately to next step before glue dries.**



Step 8: Install floor supports. Retrieve the 3 floor support assemblies. Apply glue to one side of each of the floor support. Place as shown in the pictures below. Flip assembly right-side up and push the outer walls down so they are flush with the floor supports. There will be a 1/4" difference in height between the inner and outer walls. This is important for the roof assembly to fit snug on the building.



Clamp the walls at this time so they have a better bond.



Step 9: Door assembly. At this point, your core building is complete. In this step, the door, door jams, door frames, and steps will be needed (parts 33 (x2), 34 (x4), 35 (x8), 36 (x4), 37 (x2), 38 (x2)) will be needed.

Start with the two interior doors. Take an inner door jam with hinge (#34) and apply glue on the outer edges of the piece. Insert the inner door jam with the hinge side in the position desired for the door. Repeat. In the illustration, I will be placing the hinges so they are closer to the outer walls.



Next, take a door frame and apply glue to one side of the piece. Attach to the doorway, centering its position with the door jam. Repeat on other doorway.



Apply glue to the hinge and bottom edges of the door. Position the door as desired. Here we show a door partially open going into the kitchen and one door shut.



Turn the building around so the opposite side of the doorways are showing. Apply glue to the other two door frames and attach.



Now move on to the exterior doors. These follow the same basic procedure as the interior doors with one exception. There are inner (#34) and outer door (#33) jam components. Begin with the front door. As shown in the pictures below, apply glue to the appropriate places of the inner jam and outer door jam pieces and place into the main building structure where the notches are located. Remember to put the hinge on the inner door jam in the desired opening position for the door.



Next, apply glue to the door frames (#35) and attach, centered with the door openings. Note that the outer door frame does not rest at the bottom edge of the model, but instead at the bottom edge of the door. This makes room for the staircase assembled in a later step.



After the door jams and door frames are complete, apply glue to the door and attach to the hinge. Position the door as desired.



Repeat this procedure for the side door to finish assembling the building doors.



Step 10: Window assembly. Retrieve the small window panels, frames, and acrylic inserts (parts 28 (x3), 29 (x3), 30 (x3), 31 (x3), and 32 (x3)). Take one of each part and lay them out. Make sure you pair the correct size window panels to the window frames. They have a small difference in size which can be seen when compared to one another.



Start with the front interior window. First place a small window acrylic insert (part #32) into the window opening. **DO NOT GLUE.** The interior window panel will hold it in place. The insert needs to be completely in the opening.



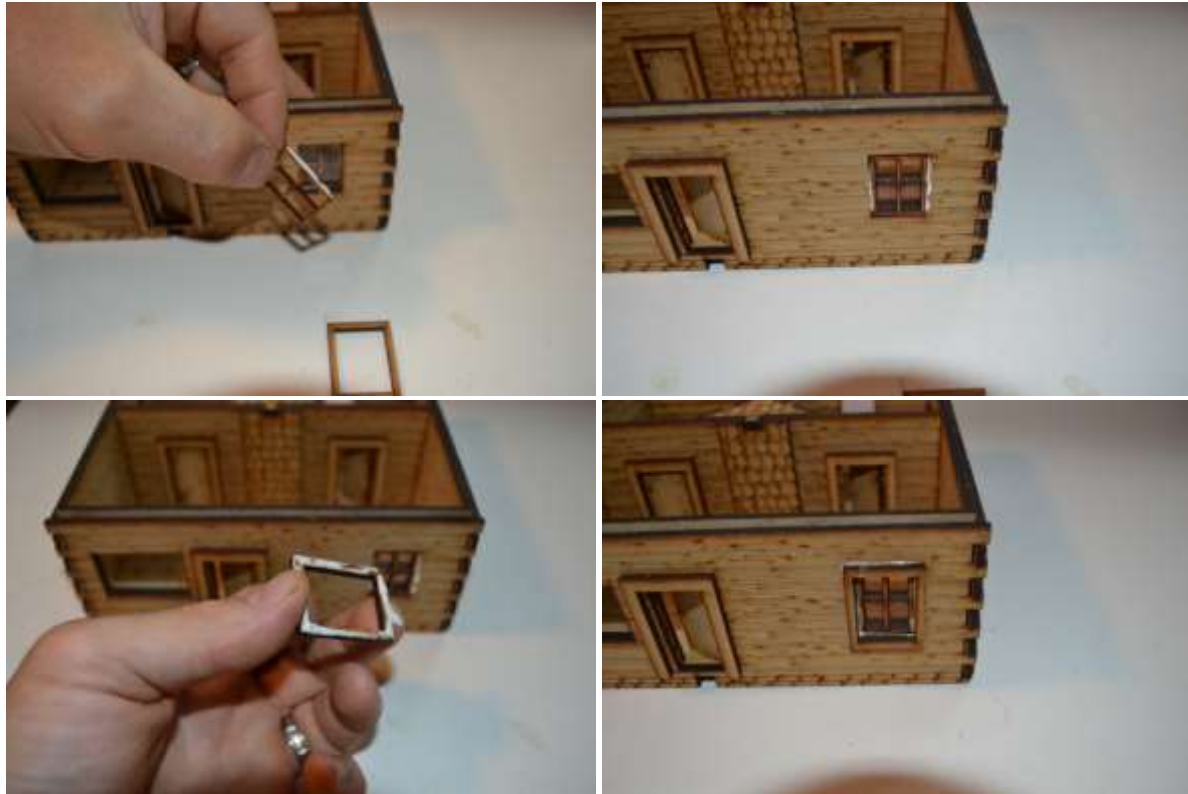
Follow this by applying glue to the interior window panel (#28). Insert into the window opening taking care not to get glue on the acrylic insert. The window panel will protrude out of the window opening.



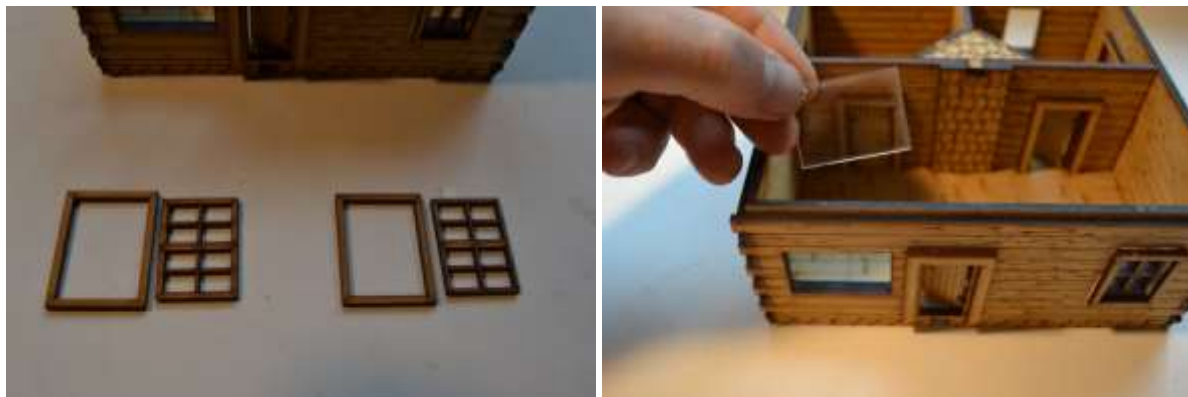
Apply glue to the interior window frame on the unfinished side. There is some minut detail on the corners of the frames that will reveal the detailed side of the piece. Place the window over the window panel. This step can be a bit tricky since the pieces fit tight. Once completed, the frame should be resting against the wall without any gaps.



Turn model around to access the outer window. Repeat the assembly of the exterior panel and frame. Notice the difference being the window panel will fit flush with the wall. This will assemble easier, but requires some centering of the frame against the window.



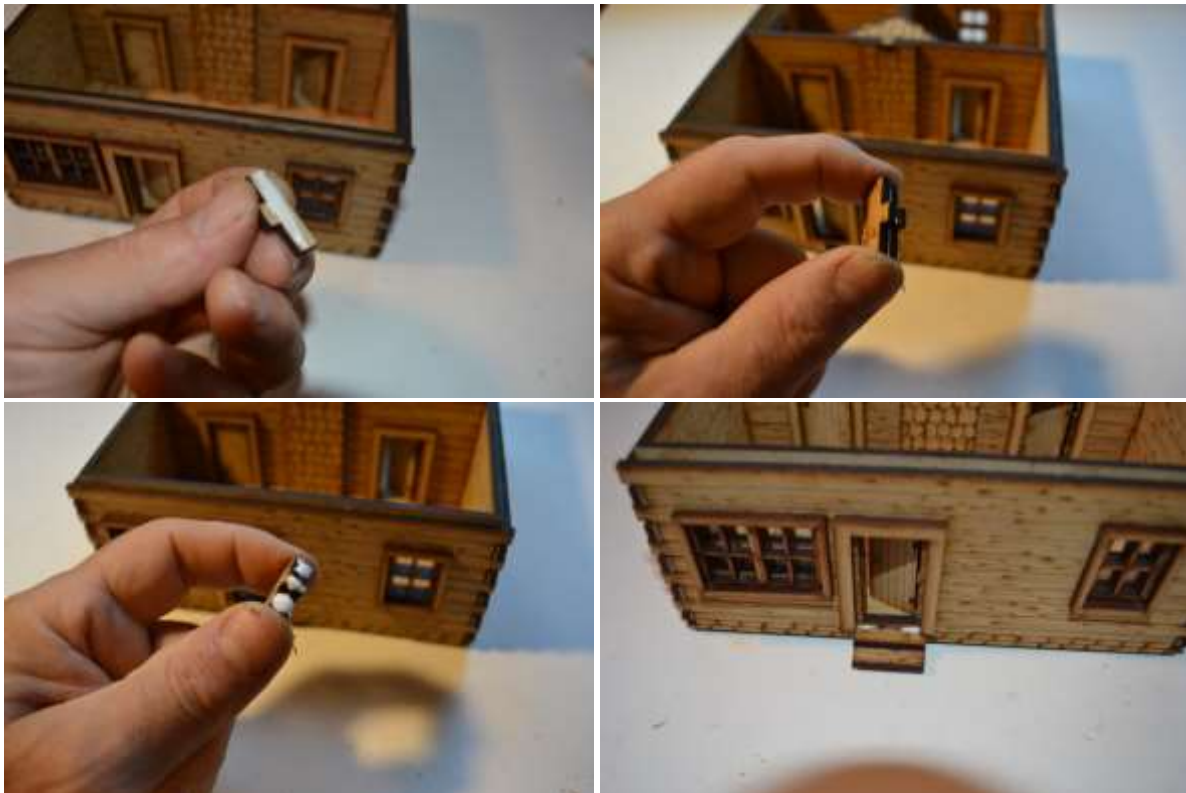
Move on to the large window on the front of the house. Retrieve the large window panels, frames, and acrylic inserts (parts 23 (x3), 24 (x3), 25 (x3), 26 (x3), and 27 (x3)). Follow the same procedures as seen with the smaller window above.



Repeat the window install step for the remaining two small windows. This will complete your windows on your model.



Step 11: Install staircases. This is the final step in the assembly of your model kit. Retrieve the last pieces, the lower and upper steps (parts #37 (x2) and 38 (x2)). Apply glue to the unfinished side of the upper step and attach to the lower steps finished side in a manner that the tabs line up. Then apply glue to the tab edge and insert into the slot on the main building with the finished side facing up. Repeat procedure with the second set of steps.



You have completed the model kit. Take the roof assembly and place on the main building. Enjoy!

