

# Assembly Instructions

Dark Ages:

Palisade Gate

P/N: KD-HS-DA-P-002W-C

Thank you for purchasing this product. This gate is part of the Palisade Defenses series of products. The gate is meant to sit between two wall pieces to provide an entry way for a fortified Dark Age or Viking town or village landscape. This gate will also work with many fantasy or early colonial settings. We hope you enjoy assembling and customizing this model kit and adding it to your landscape collection.

## **Skill Level: Intermediate**

### **Items Required for Assembly:**

- Glue (We use fast drying wood glues, but note that there are many different glues on the market.)

#### **Optional (Recommended):**

- Several clamps/cloth pins/rubber bands
- Paper towel
- If painting the model, colored spray primer, desired acrylic paint colors, brushes, and clear flat or matte spray lacquer for under and over coating finish.
- For painting ideas, please see our website gallery pictures.

### **Cautions:**

- **This model contains small parts, keep away from small children.**
- **All our models are designed for miniature enthusiasts and collectors, they are not toys.**
- **For ages 14+**
- **MDF is a pressed wood material; do not submerge in water as this will cause damage to the product.**
- **Avoid excessive moist environments.**

### **Cleaning & Storage:**

- Occasionally wipe with a slightly dampened cloth
- Store your building in a cool, dry location.

### **Pre-assembly:**

Organize the model pieces in group and familiarize yourself with their purpose. Here is a visual aid of all the parts included in your kit to help:

**\*\*\* If you are painting your model,** we recommend that you first apply a clear flat/matte clear lacquer, followed by a spray primer (color of your choice) to all your pieces prior to assembly. This helps seal the porous surface of the MDF and will provide a consistent surface to apply your paints.

### **Tips:**

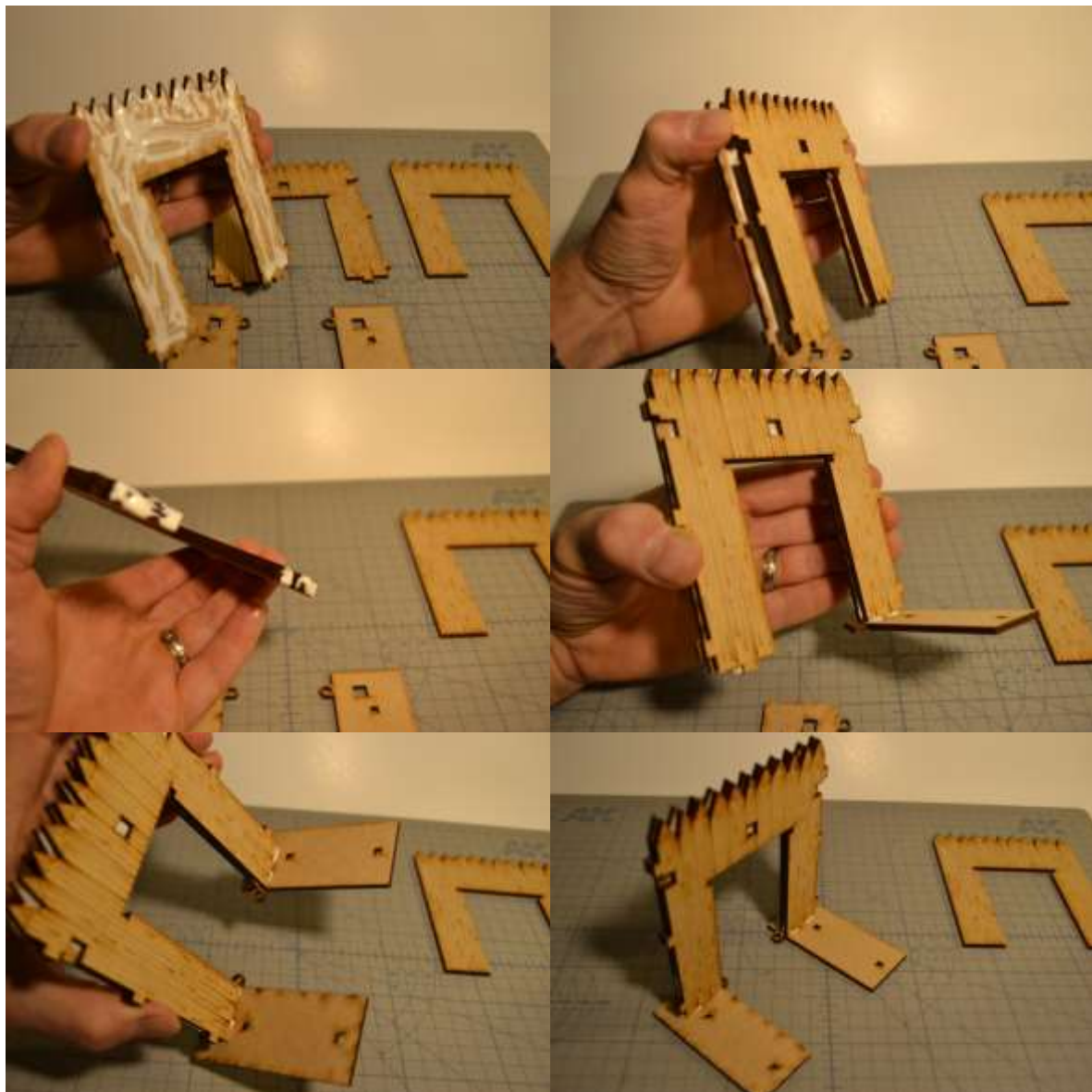
- Wipe off excessive glue
- If you can put a clamp on it or a rubber band to hold parts in place while glue bonds, do it.
- **Do a walkthrough of the assembly without gluing to get familiar with the way the connections and pieces fit.**

The image displays 28 numbered wooden puzzle pieces, organized into three distinct groups. The top-left group includes pieces 1 through 10, which are primarily rectangular frames and notched sections. The top-right group contains pieces 11 through 18, featuring more complex shapes like crossed frames and slatted panels. The bottom group consists of pieces 19 through 28, including horizontal bars, vertical supports, and small circular components. Each piece is clearly marked with a red number for identification.

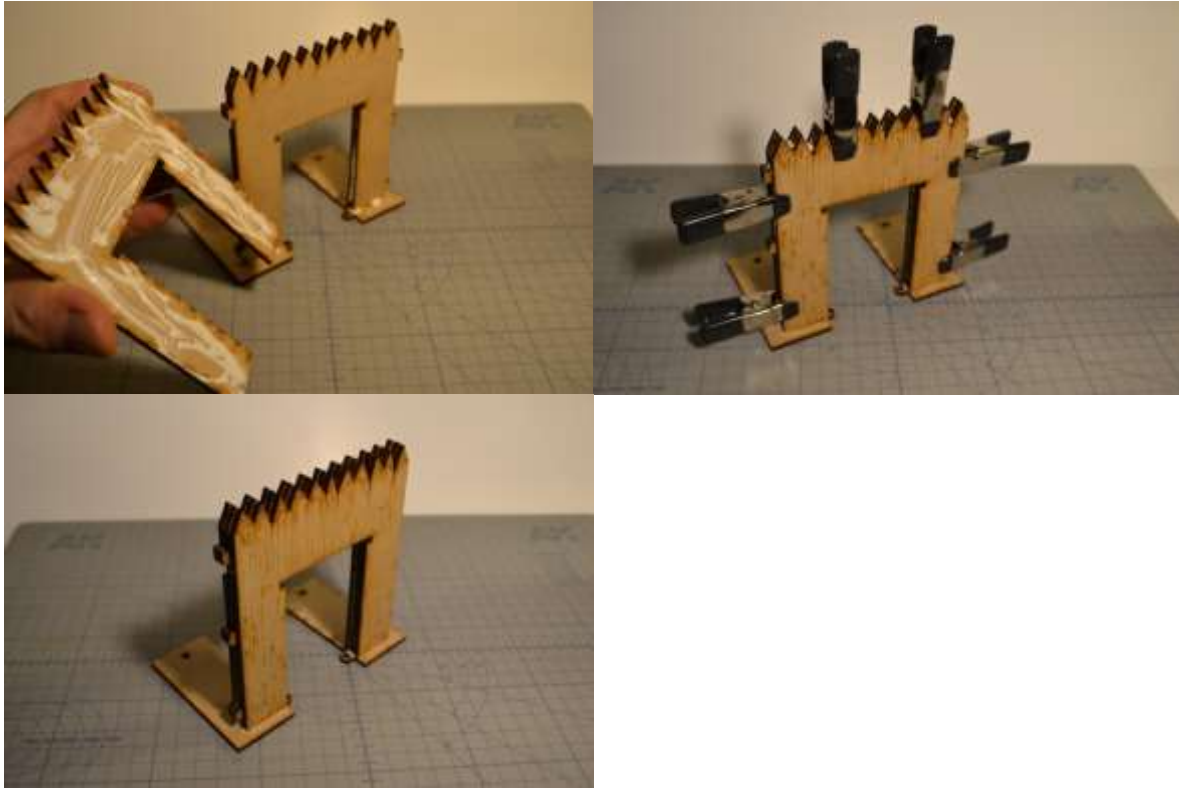
- © 2020 Koros Wargames LLC  
All Rights Reserved

**We recommend having at least 1 wall section complete before working on this model. This is important when placing the staircases in position during step 9.**

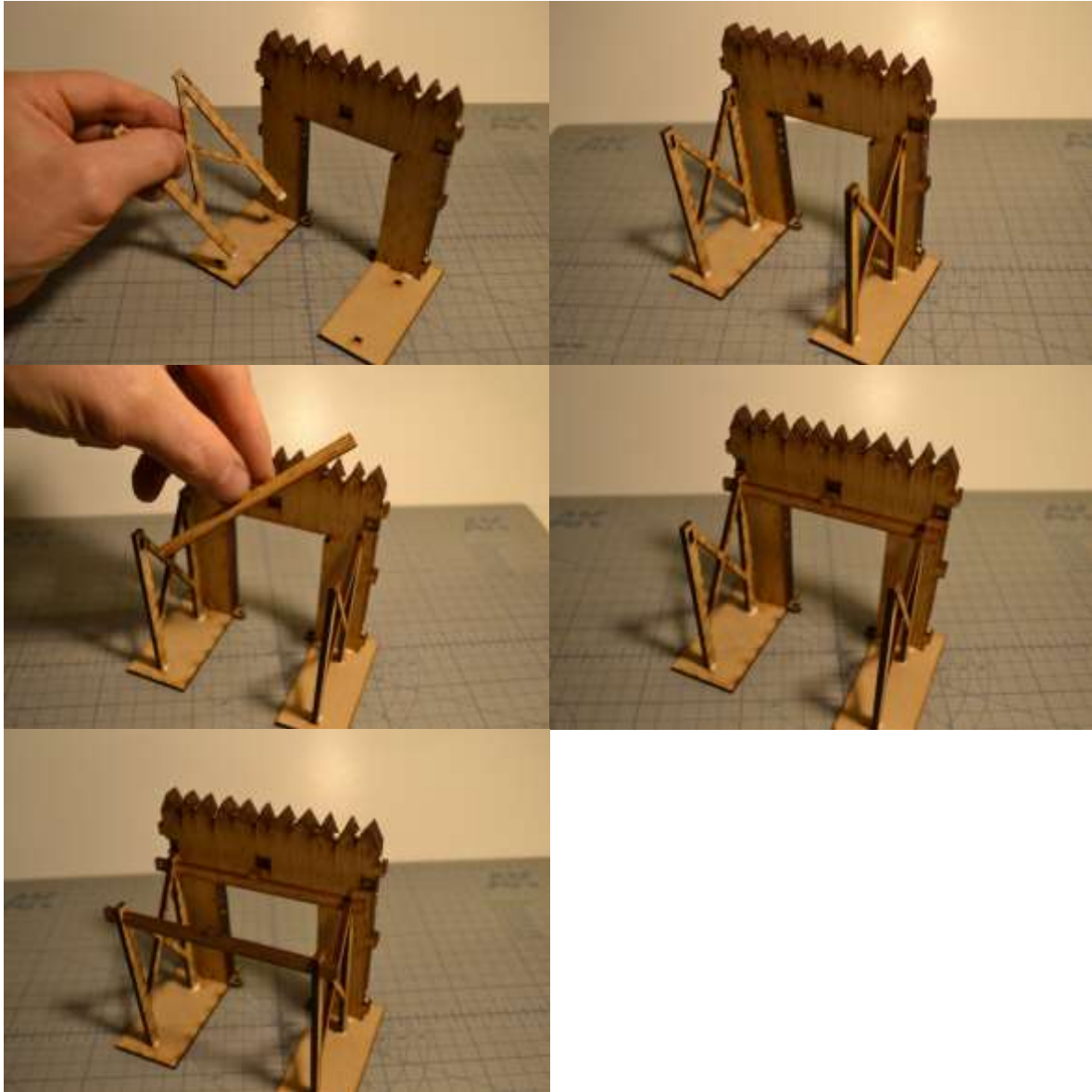
**Step 1:** Start assembling the gate wall. Before applying glue, fit the unfinished side of the inner wall panel together with the wall spacer (parts 1 and 2) to find the matching fit of the jagged edge. Apply glue to the side of the wall spacer (#2) that will be against the inner wall, and press together to the non-detailed side of the inner wall panel (#1). Next, apply glue to the bottom tabs of the gate wall assembly and attach the two base plates as shown below. The round notches will be positioned inside the gateway.



**Step 2:** Next, apply glue to the unfinished side of the outer wall panel (#3) and attach to the front of the gate wall assembly. Make sure that all edges are flush, clamp if needed.

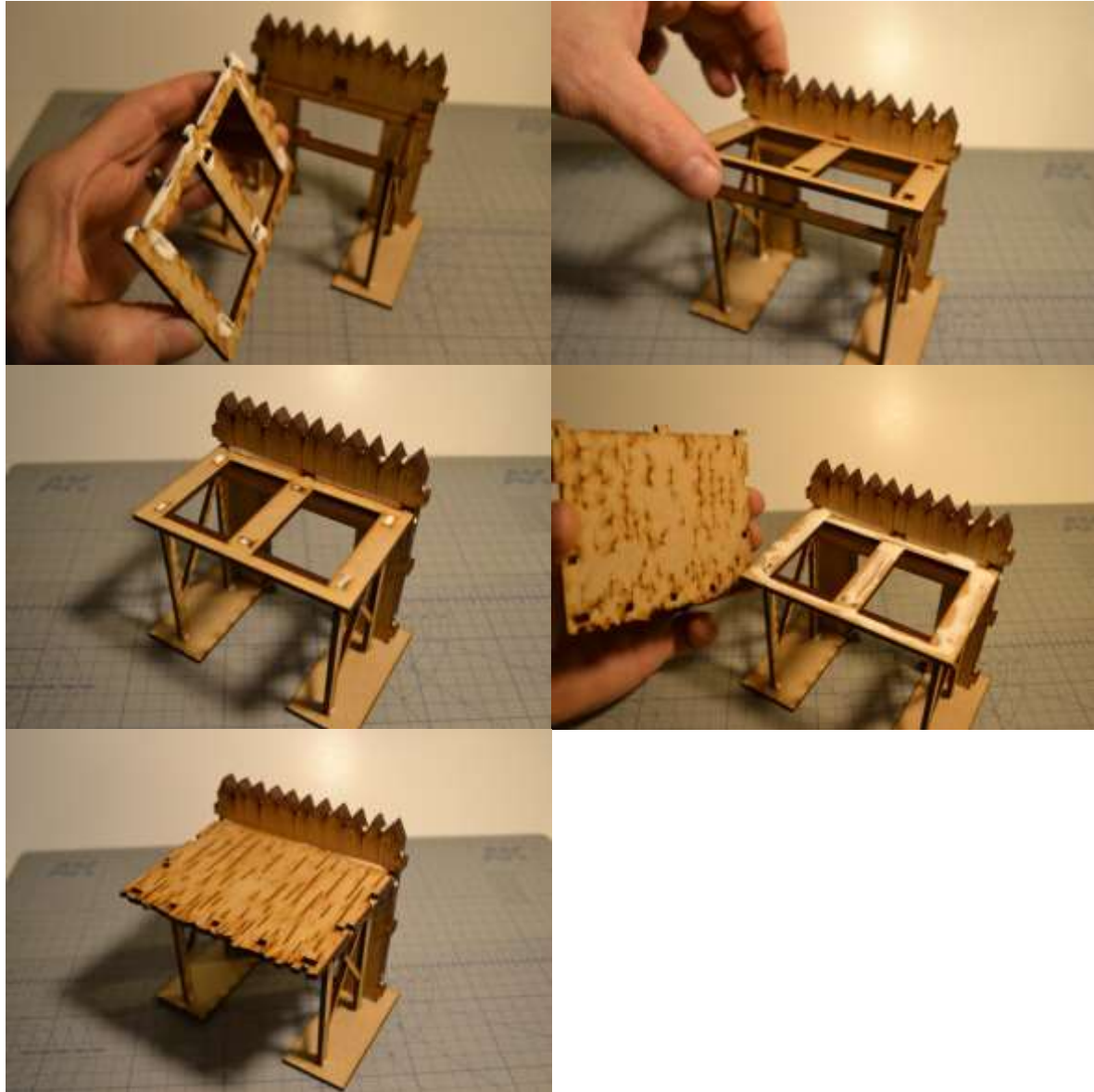


**Step 3:** Platform assembly. Retrieve the platform floor support beams (part 11 (x2)). Apply glue to the bottom of the post. Insert the glued posts into the base of the gate wall assembly. Repeat with the second support beam. Next, retrieve the platform floor cross beams (part 12 (x2)). Slide one beam into the upper slots near the wall with the center tab facing upward and the detail side facing the rear of the structure. **DO NOT GLUE this part.** Repeat with the second beam.



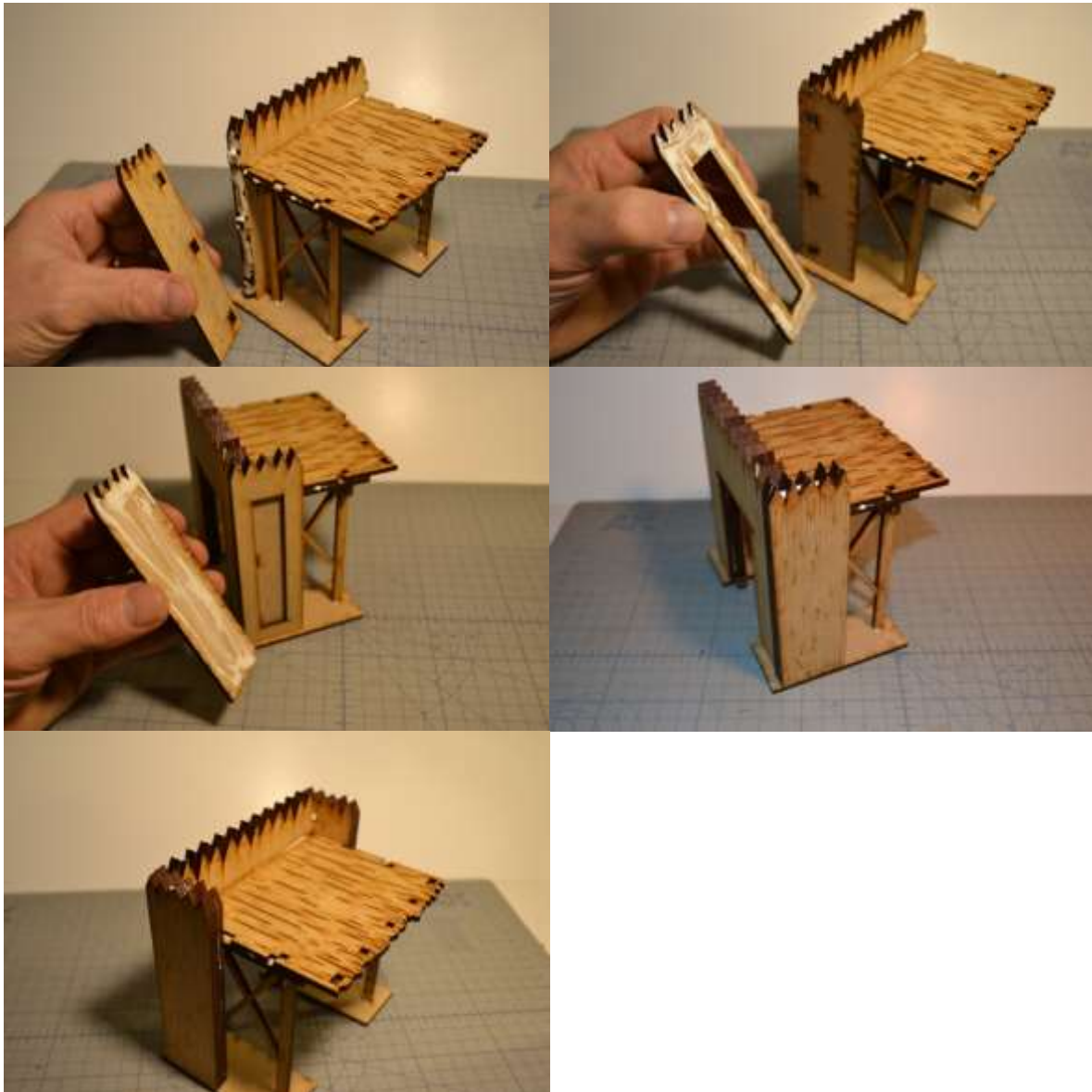


Next, apply glue to the tabs and notches, as well as the tab edge, of the platform floor support (part 13). Attach #13 by inserting the tabs into the inner gate wall notches. Then align the various support beam tabs so they fit into the notches on #13. (The alignment process can be a little tricky) Finally, apply glue on the top of #13 and attach the platform floor (part 14) with the tabs inserted into the inner gate wall. **Make sure the detail side is facing upward.**

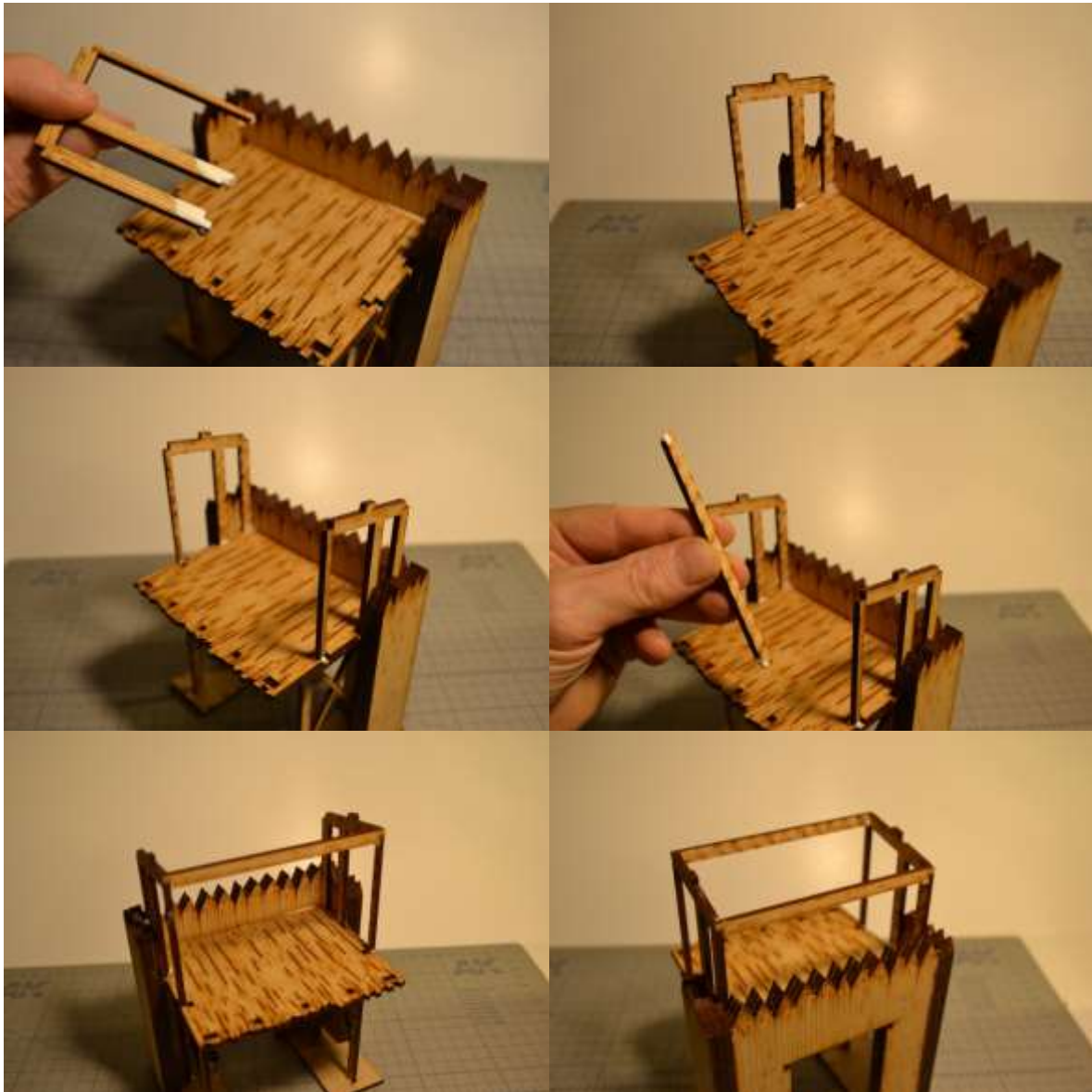




**Step 4:** Assemble Side A wall panel (parts 5, 6, and 7). Apply glue to the large tabs on one side of the wall assembly and the notch in the base. Attach the inner side wall panel (#5) with the detailed side facing inward to the gate wall assembly. Then apply glue to the entire side of the wall spacer (#6) and attach to the side panel. Finally, apply glue to the outward side of the wall spacer and attach the outer wall side panel (#7) with the details facing outward. **Make sure that all the edges are flush and that the jagged top edge line up.** Clamp if desired to create a better bond. **Repeat step 5 for Side B wall panel (parts 8, 9, and 10).**



**Step 5:** Install Roof (parts 15 (x2), 16, 17, and 18 (x2)). Retrieve roof column support A & B (parts 15 (x2)). Apply glue to the bottom of the posts and insert into the floor notches along the side wall. Notice that the shorter post is positioned in the front of the tower so that the roof will be slanted forward. Also note that the rear support sits on top of the platform and does not insert into a notch. Next, retrieve the Roof Cross Beams (parts 18). Apply glue to each end of one of the cross beams and attach to the notches on the roof column supports, details facing outward. Repeat this with the second cross beam.



Now, apply glue to the outer area of the roof support (part 16) and attach the roof support by inserting the notches onto the tabs of the support assembly. Then apply glue to the entire surface of the roof support and attach the unfinished side of the roof (part 17). Position the roof support so it is centered on the structure, or if desired, you may position it as you like.



**Step 6: Platform Railing.** Retrieve the Side and Rear platform rails (parts 19 and 20 (x2)). Apply glue to the bottom of #20 (the bottom has small tabs on the post). Also apply some glue to the post on the detailed side that will touch the rear side roof support on the gate wall assembly. Insert into the side notches seen on the platform. Repeat for the other side.

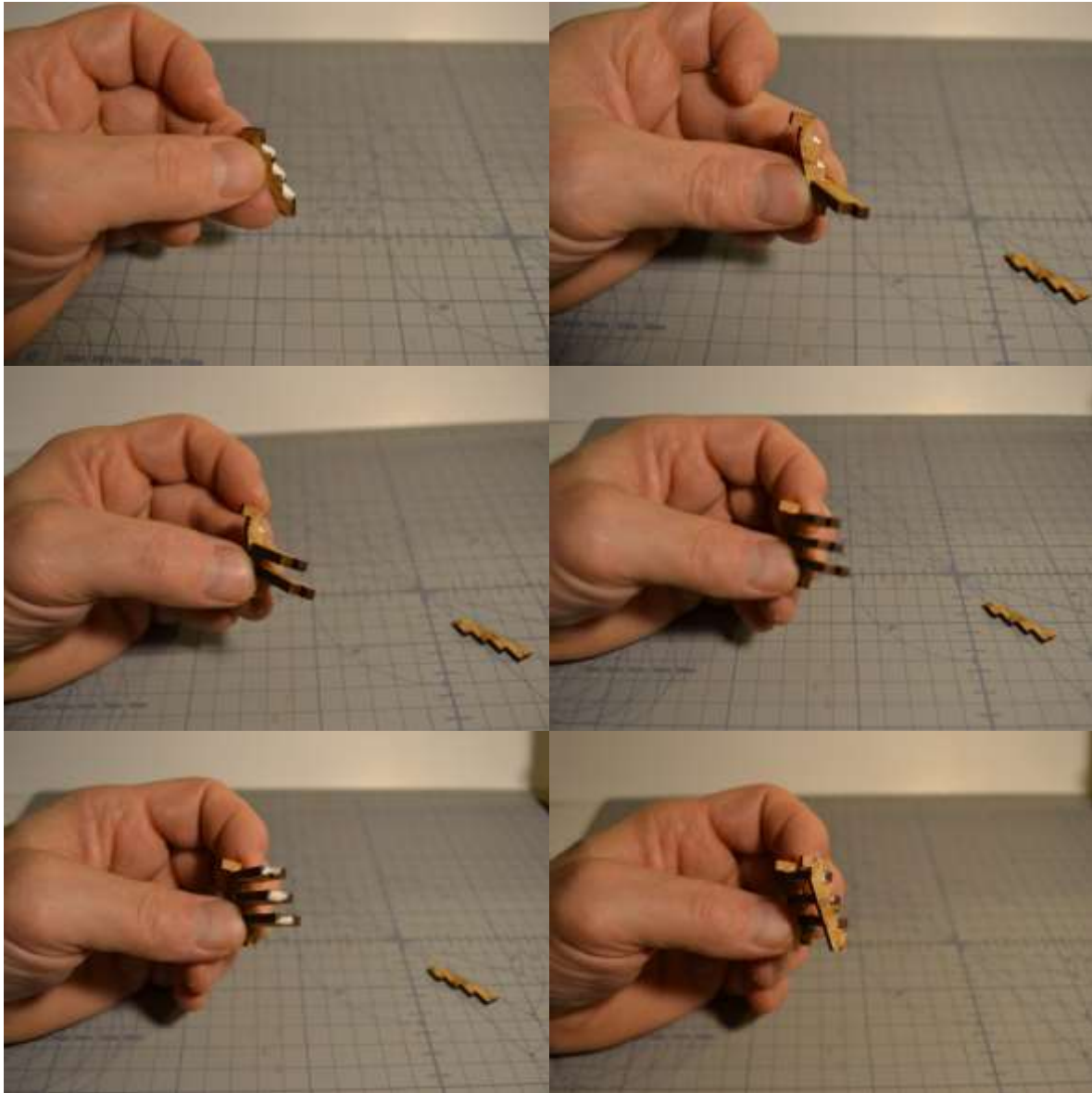


Apply glue to the side posts and bottom of #19. Insert into the notches along the rear of the platform. Wipe off excess glue.

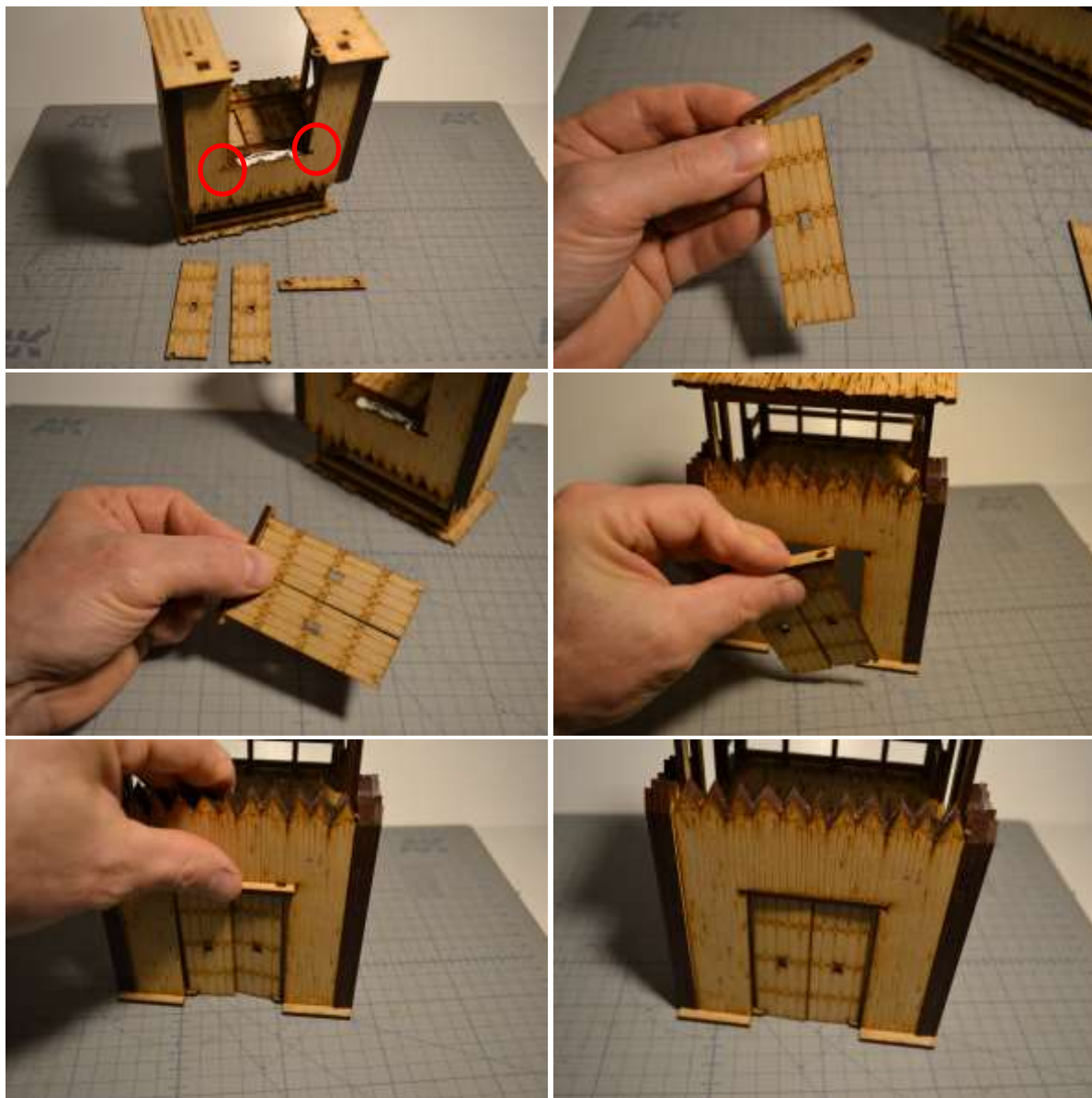




**Step 7:** Stair assembly (parts 20 (x2) and 21 (x3)). Hold a stair riser with the small tab upward. Apply glue to the jagged edge of the riser. Take a step (#21) and place on the lower position on the riser. Continue with the other two steps on each additional riser position. Finally, glue and attach other riser to the stair assembly. Repeat step 8 with the second set of steps. Set aside.

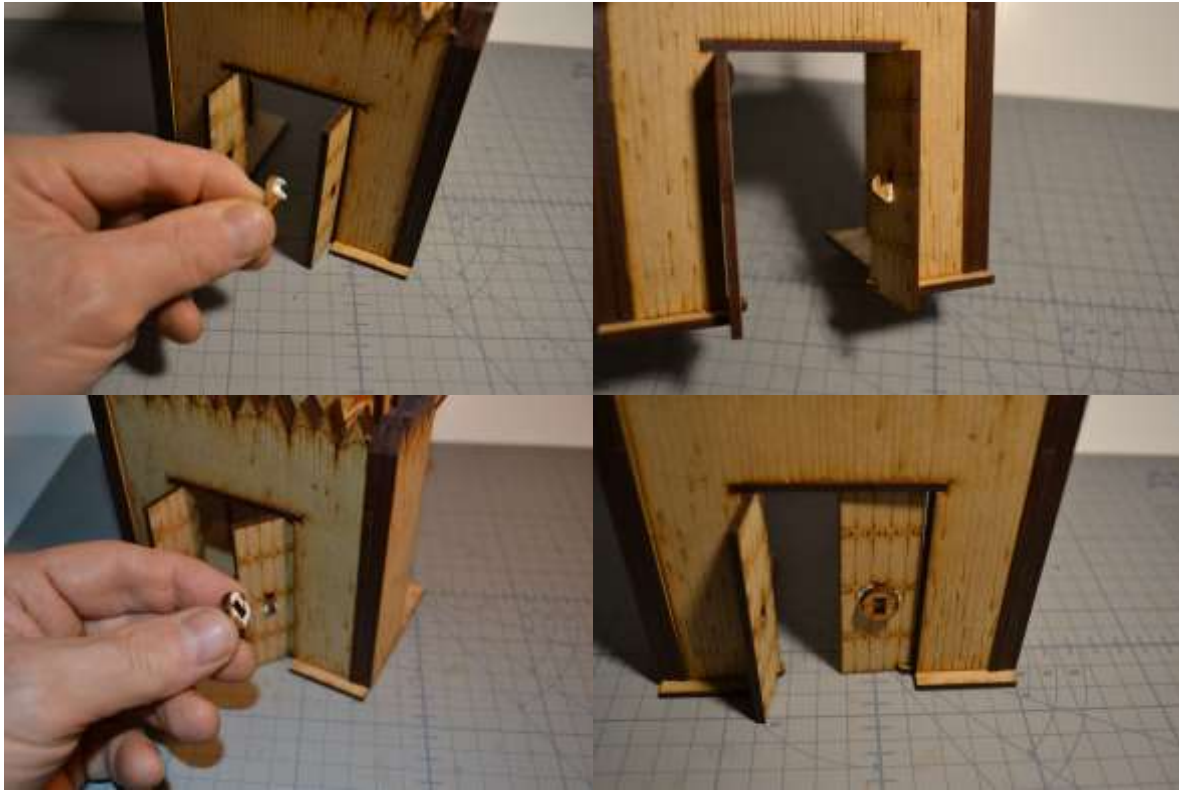


**Step 8:** Assemble the Gate. Retrieve the gate assembly pieces (parts 21, 22 (x2), 23 (x2), 24 (x2), and 25). Flip the gate wall assembly upside-down and apply glue to the inner portion of the top door jam. Do not put glue on the left and right side of the top of the jam (**area circled in red**). Now, take the upper door hinge (#21) and one of the doors (#22). **DO NOT APPLY GLUE.** Insert the small tab into the round hole in the upper door hinge. Make sure the side with the notch is downward. Repeat with the other door. Insert this door assembly bottom tabs into the base holes of the gate wall assembly. Then press the door hinge portion into the slot where the glue was applied. The doors will open and close.

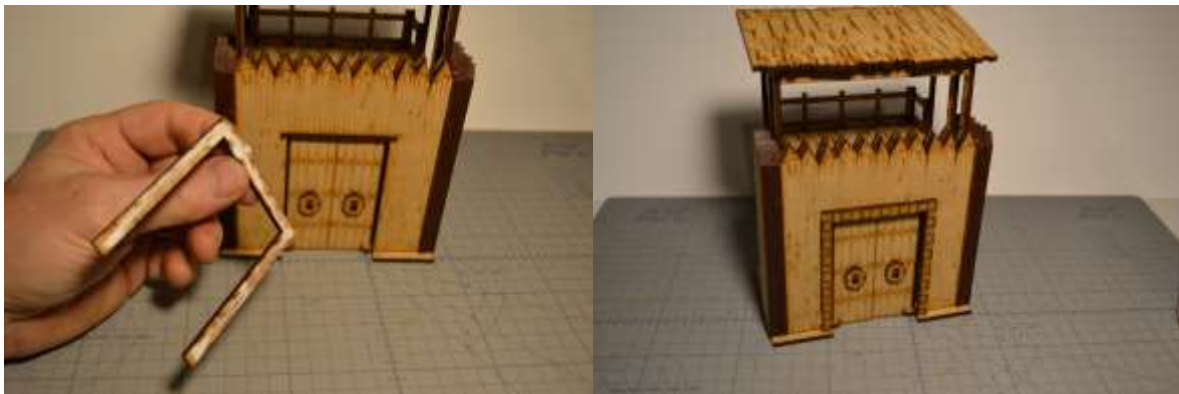




Open the gates and apply glue to the door bar hook (#23). Insert 23 into the hole in the center of the door so that the notch grips the door. The hook will be facing upward on the interior door side. Then apply glue on the unfinished side of the door boss (#24) and attach it to the front of the door where 23 is protruding. Repeat with the second door.



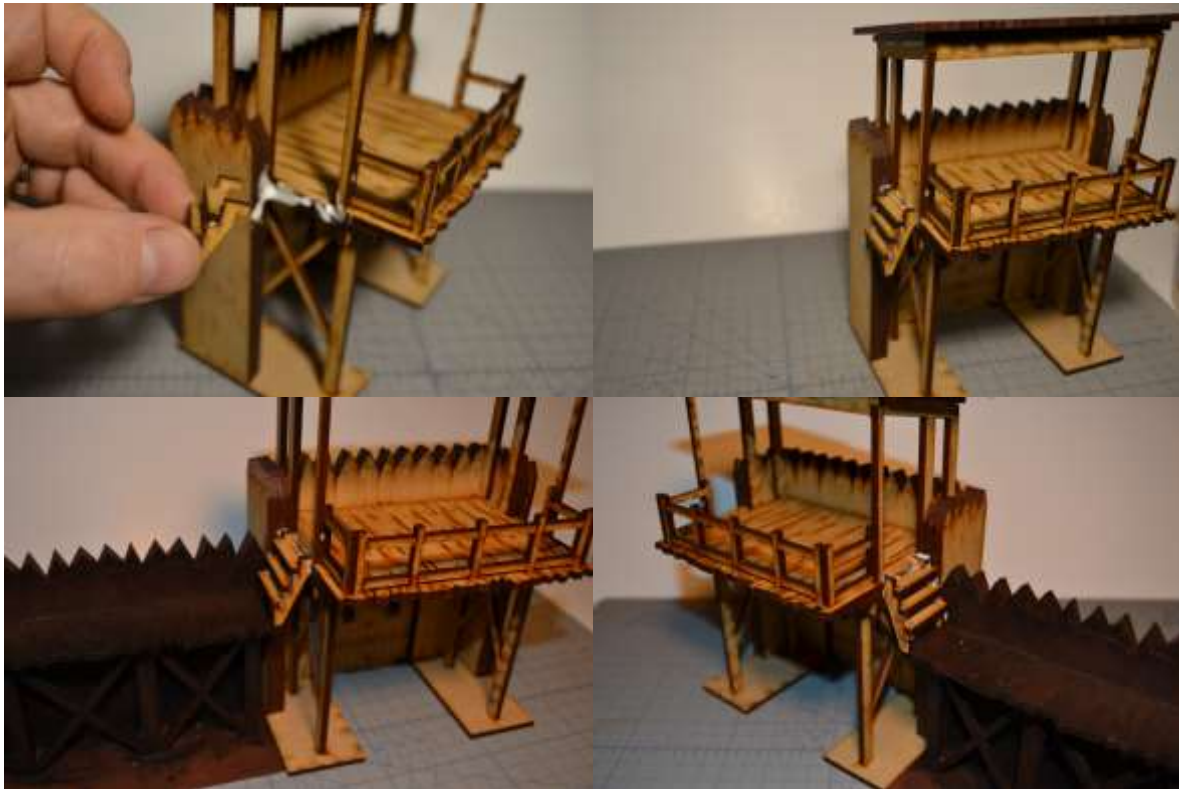
Now apply glue to the unfinished side of the outer door frame (#25) and attach to the front side of the gate wall assembly.



**Step 9:** Apply glue to the wall edge and platform notches and edge where the staircase will be placed. Insert the small tabs of the staircase assembly (from step 7) into the platform notches.

To ensure the proper position of the staircase, place a completed wall section next to the wall tower and adjust the staircase so it sits properly on the battlement of the wall.

**Repeat this step for the other staircase.**



### **Optional removable gate bar.**

The gate bar (part 28) may be dropped into place on the gate hooks. This piece is meant to be removable.



**Your palisade gate model is complete.**

