

Ace-2

ACE-2

The Ace-2 is a sturdy, double-sided silver aluminum "A-frame" sidewalk sign. Designed for rigid graphic panels that can be easily changed out via the convenient snap frame. Comes included with dry erase lenses, as well, so you can use it without graphics if needed. Additional weight (sandbags, etc.) recommended for outdoor use.



features and benefits:

- Easy to transport
- Double-sided display anti-glare cover graphics
- Aluminum light weight frame
- Outdoor or indoor use
- Snap frame to easily remove and replace graphics
- Toolless, quality protection during transportation
- One year limited warranty against manufacturer defects

dimensions:

Hardware

Graphic

Assembled unit:
25" w x 46.75" h x 25" d
635mm(w) x 1187mm(h) x 635mm(d)

Refer to related graphic template for more information.

Approximate weight:
11 lbs / 5 kgs

Graphics Warranty: 6 Months

Visit:
<https://www.theexhibitorshandbook.com/download-graphic-templates>

Shipping

additional information:

Packaging:
Box

Graphic material:
- 2 Dry erase lenses
- 2 White board

Shipping dimensions:
50" l x 28" h x 5" d
1245mm(l) x 711mm(h) x 127mm(d)

**It is recommended to add weight such as sandbags for outdoor use.

Approximate total shipping weight (includes cases & graphics):
16 lbs / 7 kgs

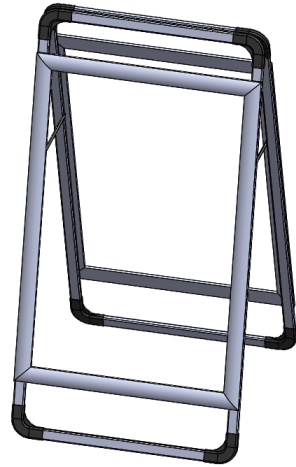


This product may include the following materials for recycle:
aluminum, select wood, fabric, cardboard, paper, steel, and plastics.

We are continually improving and modifying our product range and reserve the right to vary the specifications without prior notice. All dimensions and weights quoted are approximate and we accept no responsibility for variance. E&OE. See Graphic Templates for graphic bleed specifications.

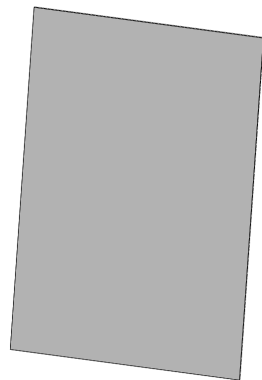
Included In Your Kit:

ACE-2



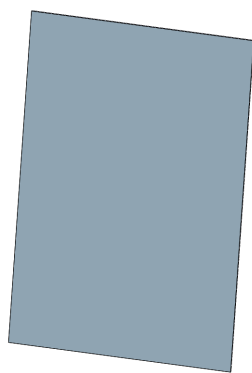
(x1)

Dry Erase Lens

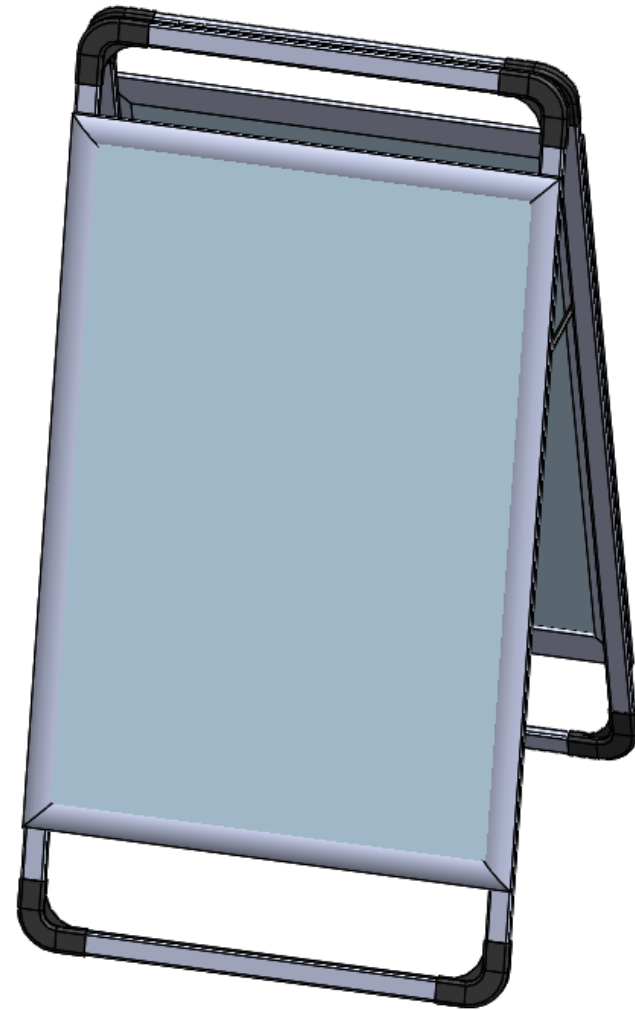


ACE-2-LENS (x2)

White Board

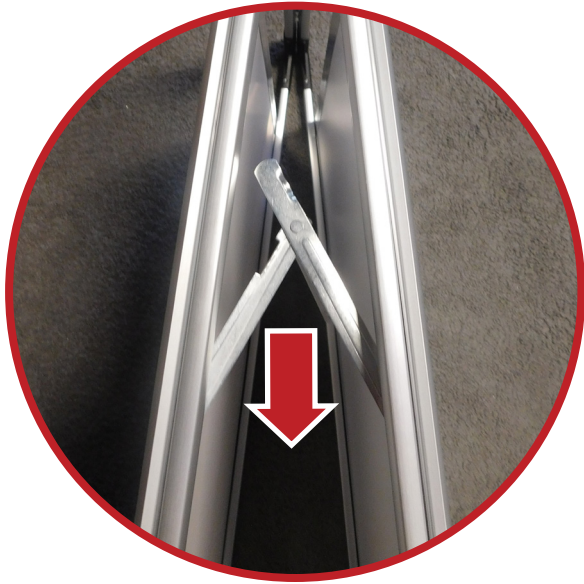


ACE-2-WHT-BRD (x2)

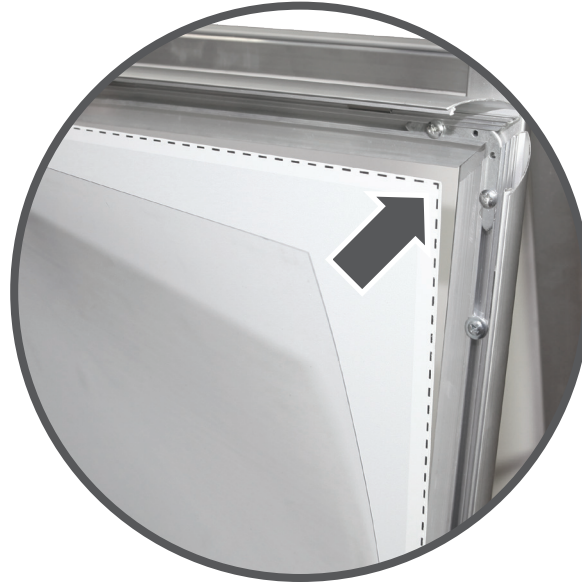


Isometric View

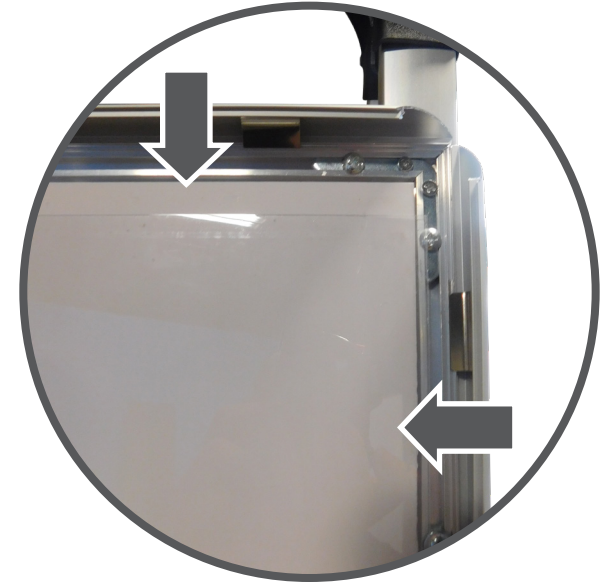
Frame Assembly:



Step 1: Expand the A-frame and lock into place with the side arms.



Step 2: To change graphics, simply snap open the perimeter frame, remove lens and white board.



Step 3: Insert new graphic, and secure by closing the snap frame around it.

