



COUTURE COLLECTION 2019





Katherine Jetter ~

Jewelry designer and colored gemstone expert, Katherine Jetter launched her eponymous line eleven years ago. Her creativity and innovative designs were immediately recognized; she was named COUTURE Designer of the Year in 2008, her debut year. As a Graduate Gemologist, her designs are often inspired by the gemstones themselves. Katherine is well known for her impeccable eye for color, fresh designs in timeless settings, and her array of investment grade precious gemstones. She excels at Couture, one of a kind, custom pieces for her discerning clientele. Her collections feature only the finest materials and are expertly crafted to her high standards. Katherine's earlier collections feature an array of opals in honor of Australia, her



18K Gold Pendulum "Tick-Tock" Earrings with Oval Rubellite Tourmaline (2.5 ct) Diamond (.43 ct) Bar and Boulder Opal (13.31 ct) Rectangle Drops



18K Blackened Gold Pendulum "Tick-Tock" Earrings with Emerald Cut Amethyst (2.5 ct) Diamond (.55 ct) Bar and Boulder Opal (24.76 ct) Rectangle Drops



18K Gold Bezel Aquamarine, Apatite and Citrine Slice Earrings



24" 18K Gold and Moonstone Chain Necklace with Faceted Green Beryl Pendant with Diamond Bale

SPINEL COLLECTION


The Spinel Capsule Collection features Burmese red and gray spinel in 18K white gold and diamond accents.



18K White Gold and Gray Spinel Three Drop Earrings with Diamond Frames



18K White Gold Red Spinel Cabochon Top in Diamond Frame Earrings with Gray Spinel Drops and Diamond Stations



18K White Gold Poison Berry Earrings with Carved Black Opal Petals, White Diamond Pave and Argyle Pink Diamonds.



18K White Gold Carved Black Opal Flower Ring with Blue Spinel Center Stone, Diamond Pave' Frame and Tsavorite Pave' Twisting Band



18K Rose Gold Earrings with Pink Tourmaline Tops in Diamond Frame, Pink Tourmaline Center Station and Morganite Pear Shape Drop in Diamond Frame

24" 18K Rose Gold Chain Necklace with Oval Faceted Morganite Pendant in Diamond Frame and Diamond Bale



18K Gold Fire Opal Cluster Top Earrings with Pear Shape Fire Opal Drop in Diamond Frame

FIRE OPAL COLLECTION

Rich, warm hues of orange-to-red Mexican fire opals make up the capsule collection from Katherine Jetter. Featuring the highest quality material available.



24" 18K Gold Chain Necklace with Emerald Cut Topaz Pendant with Diamond Bale

24" 18K Gold Chain Necklace with Oval Cut Topaz Pendant with Diamond Bale



18K White Gold Four Drop Blue Moonstone Earrings in Diamond Frames

Faceted, Graduated Size Moonstone Bead Necklace with Alternating Black Onyx Roundel Beads and 18K White Gold and Diamond Ball Clasp



18K Gold Two Drop Fire Opal Earrings with Diamond Frame Drops

22" Ombre' Color-Graded Faceted Fire Opal Bead Necklace with 18K Gold and Diamond Ball Clasp

18K Gold and Oval Cut Fire Opal Ring in Diamond Frame



Platinum Ring with Emerald Cut Indicolite Tourmaline Center Stone Flanked by Emerald Cut Pink Spinel

18K Gold Earrings with Rhodolite Garnet Tops in Diamond Frame, Green Tourmaline and Rhodolite Garnet Stations, and Garnet Pear Shape Drops in Diamond Frames



18K White Gold Earrings with Blue Moonstone Cabochon Tops in Diamond Frame, Diamond Center Station and Emerald Cut White Topaz Drops

18K Rose Gold Earrings with Cushion Cut Morganite Tops, Diamond Center Station and Emerald Cut Morganite Drops



18K White Gold and Gray Spinel Four Drop Earrings with Red Spinel and Diamond Pave'



18" 18K White Gold Necklace with Red Spinel Cabochon Stations, Gray Spinel in Diamond Frame Stations

CAGE COLLECTION



18K Darkened White Gold Australian Black Opal Ring with Tsavorite Trillion Side Stones and Blue Sapphire Frame

18K Darkened White Gold Australian Black Opal Ring with Red Spinel Pave' Frame and Band



The Katherine Jetter Cage Collection features a functional cage design that opens and closes to allow for interchangeable stones. The Cage Collection pendants come in small, medium and large sizes.

Left to Right:

18K Large Gold Cage, shown without stone

18K Medium Gold Cage, shown open, with Morganite Crystal

Below: 18K Medium Gold Cage, shown open, with Aquamarine Crystal

18K Gold and Diamond Bar Cage Earrings with Muzo Emerald Beads





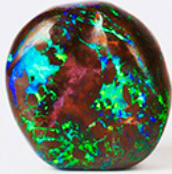
Platinum Green Beryl (15.22 ct) Ring with
Morganite (3.66 ct) Trillion Side Stones and Paraiba
Tourmaline (2.56 ct) and Diamond Pavé Accents



birthplace. She is considered responsible for re-introducing opals to the luxury jewelry market and continues to include unique and important opals in her repertoire. She is inspired by bold and brilliant women, her daughter, and places that feel like home. Her collection is exclusively carried by some of the best luxury retailers in the country such as Marissa Collections, Elizabeth Anthony, Neapolitan, Betteridge and Mitchell's stores.

- * Featured in Olivier Dupon's *Fine Jewelry Couture* | *Future Heirlooms*
- * Couture Designer of the Year with her debut collection
- * Featured in *Elle*, *Bazaar*, *InDesign* and many other publications





www.katherinejetter.com
@katherinejetter
205.275.1080 Sales