

# INSTALLATION GUIDE.

**mountune**

## AUXILIARY COLD AIR INTAKE. MK8 FIESTA ST.

- 10mm socket & ratchet
- small pry bar/trim tool
- phillips head screwdriver

### TOOLS REQUIRED:



Time  
60 minutes Approx.

### Step 1



Using a 10mm socket loosen and remove the outer wheel arch lining self tapping screws. Do this for both sides of the vehicle.

### Step 2



Gently pull the wheel arch lining away to loosen and remove the hidden self tapping screw using a 10mm socket. Do this for both sides of the bumper.

### Step 3



Next, using a phillips head screwdriver undo the 6 plastic fasteners that connect the bumper to the undertray.

### Step 5



Using the same screwdriver, loosen and remove the outer screws on both sides of the slam panel.

### Step 6



Now, loosen and remove the self tapping screw shown above on both sides of the slam panel using a 10mm socket.

### Step 7



Lift the tab on the top of the slam panel up on both sides.



## Step 8



Carefully pull the side of the bumper as shown away from the wheel arch until it is clear of the vehicle. Do this for both sides of the bumper.

## Step 9



Now loosen and remove the self tapping screw shown with a 10mm socket on both sides of the slam panel.

## Step 10



Gently remove the fog light connectors on both sides, then remove the bumper from the vehicle.



### Step 11



Using a phillips screwdriver loosen and remove the outer self tapping screws as shown on both sides of the shroud.

### Step 12



Now using the same screwdriver remove the lower self tapping screws from both sides of the shroud.

### Step 13



Gently remove the ambient air temperature sensor.

### Step 14



Remove the original shroud from the front of the vehicle.



### Step 15



Fit the supplied air feed hose to the auxiliary cold air intake using the supplied jubilee clip.

### Step 16



Place the ACAL into position, making sure the sensor does not get caught and the wiring sits in the cut out as shown.

### Step 17



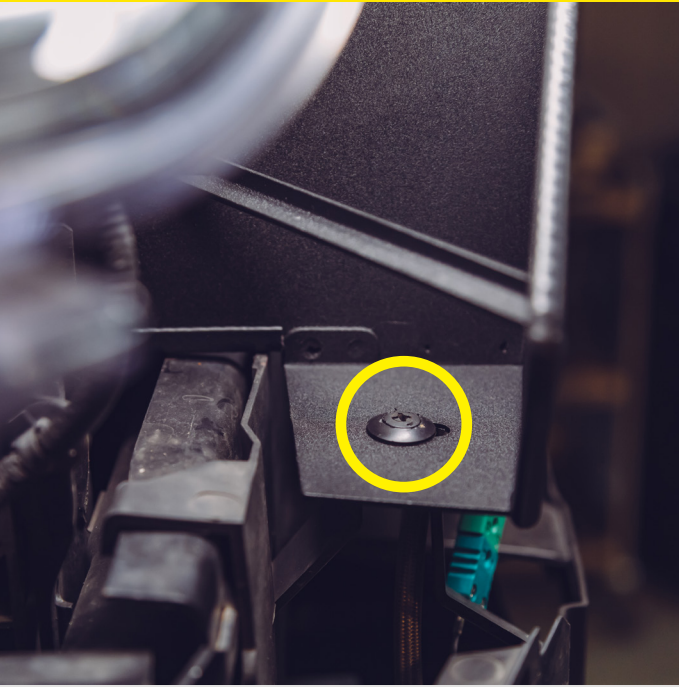
Push in the original fasteners on either side of the ACAL as shown.

### Step 18



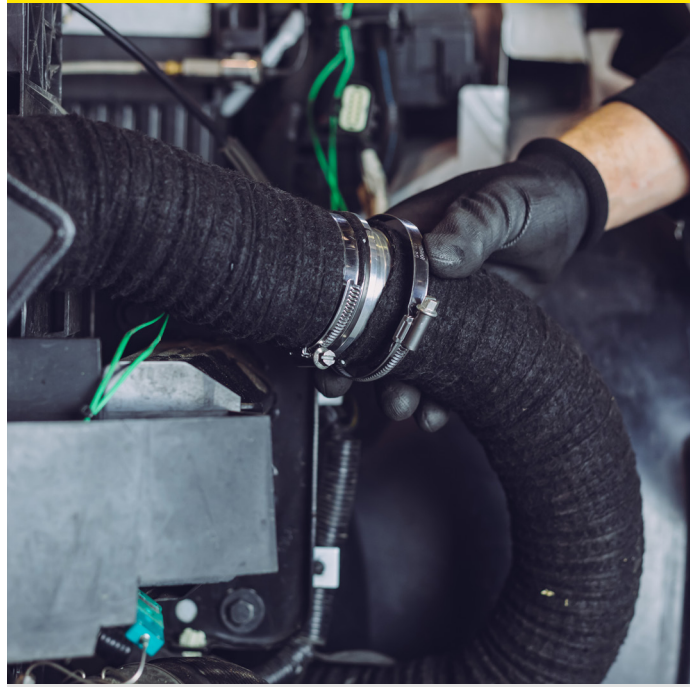
Refit the ambient air temperature sensor from the underside of the shroud as shown.

### Step 19



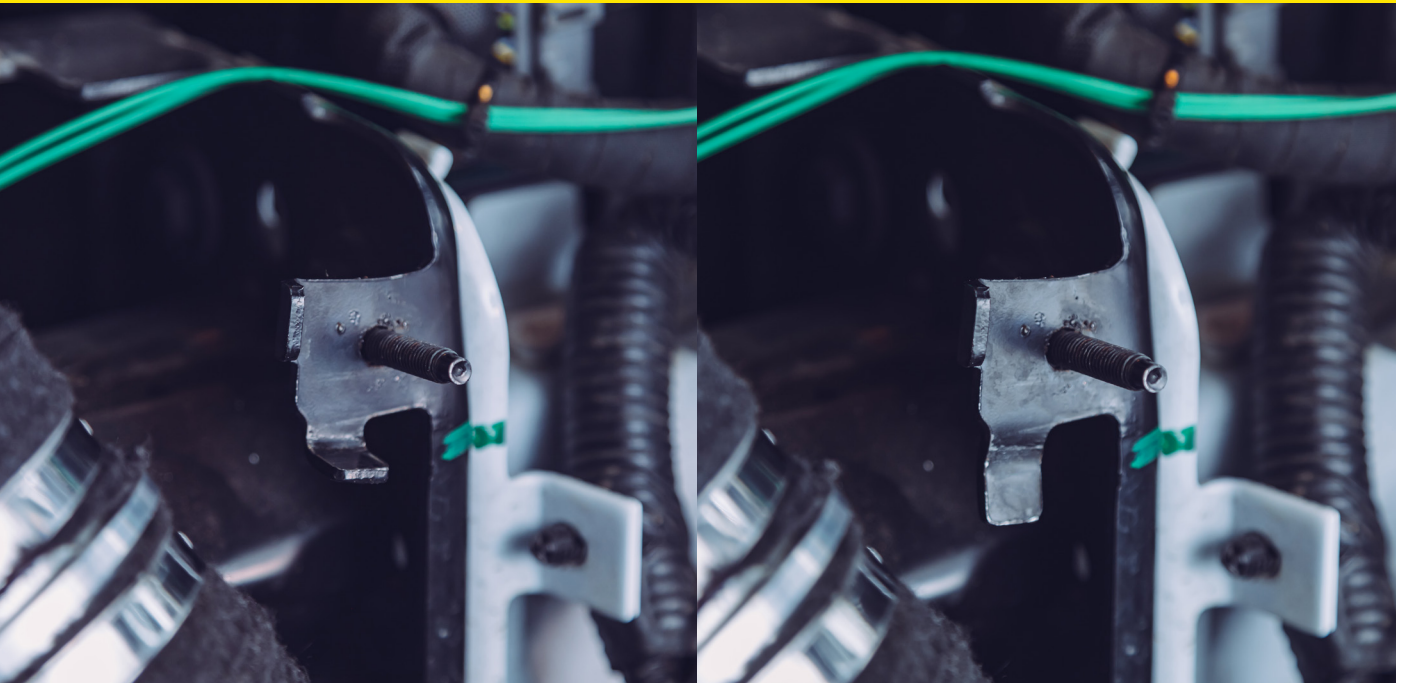
Push in the two lower fasteners as shown on either side of the ACAI.

### Step 20



If you are running the mountune Induction Kit attach the ACAI supplied shannon hose to the air box shannon hose using the supplied coupler and jubilee clips as shown.

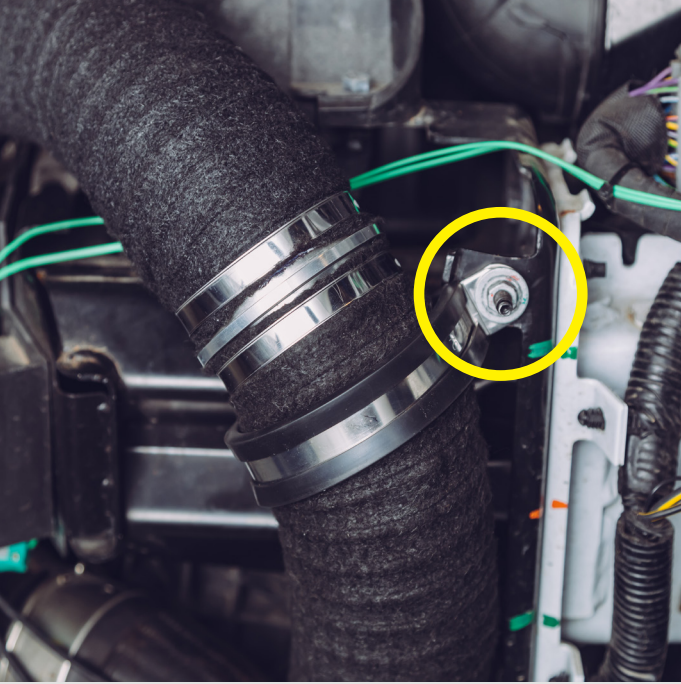
### Step 21



To attach the P clip at the correct angle you will need to bend the bracket as shown.



## Step 22



Using the supplied P Clip and nut attach the air feed hose to the stud circled.

## Step 23



Refit the bumper using the steps to remove it in reverse.